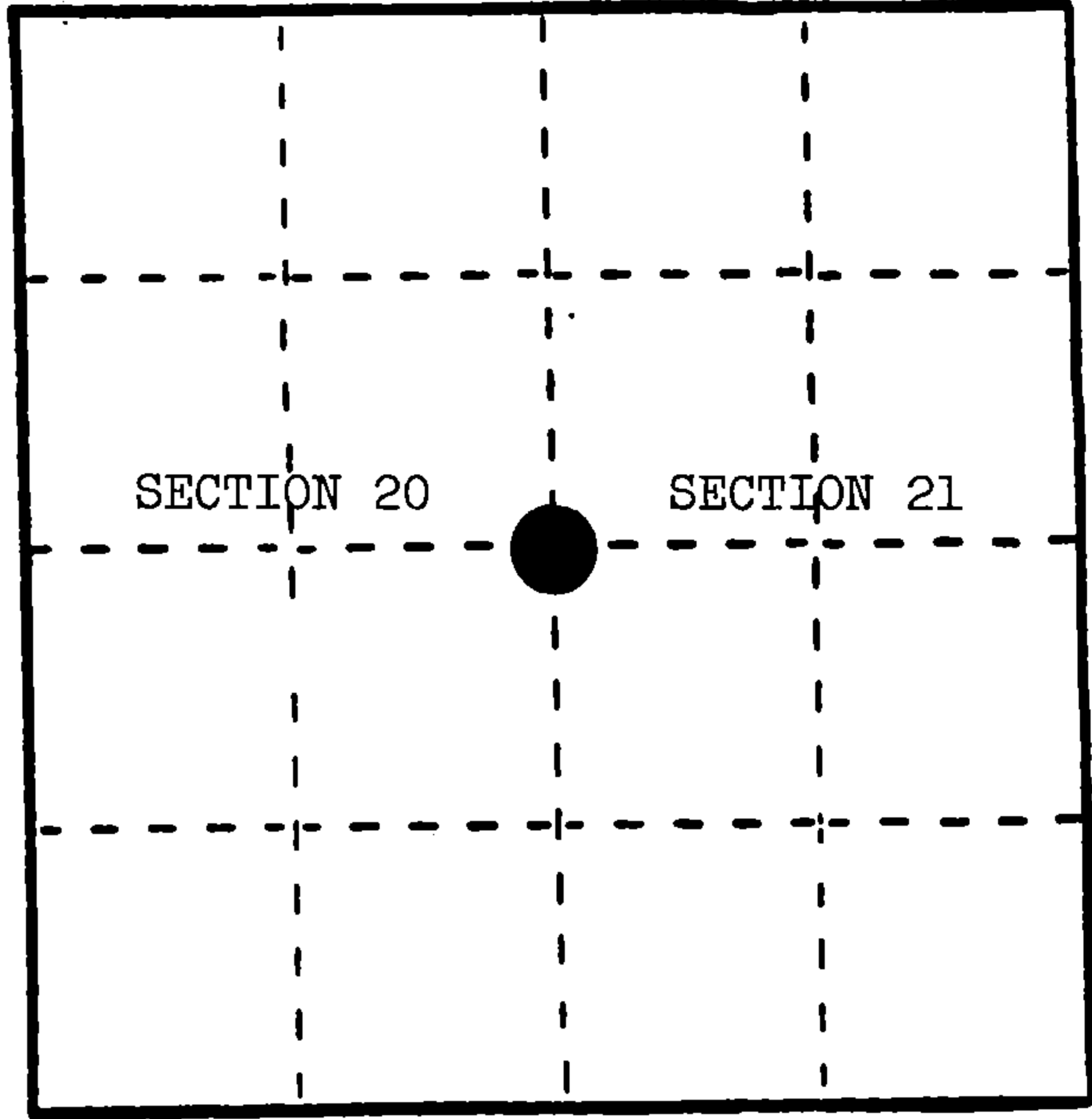


U. S. PUBLIC LAND SURVEY MONUMENT RECORD

INSTRUCTIONS: This record shall show the location of the corner and shall include all of the following nine elements (a through i).

- (a) Identify the corner by reference to the U.S. public land survey system.
O = Corner monument restored.

Quarter corner to Sections 20 and 21, T.34N., R.16E.



- (b) Describe any record evidence, monument evidence, occupational evidence, testimonial evidence or any other material evidence you considered, and whether the monument was found or placed.

In 1858, James McBride set wood post with the following BTs: Beech, 20", S.81°E., 8 links; Beech, 18", N.48°W., 32 links.

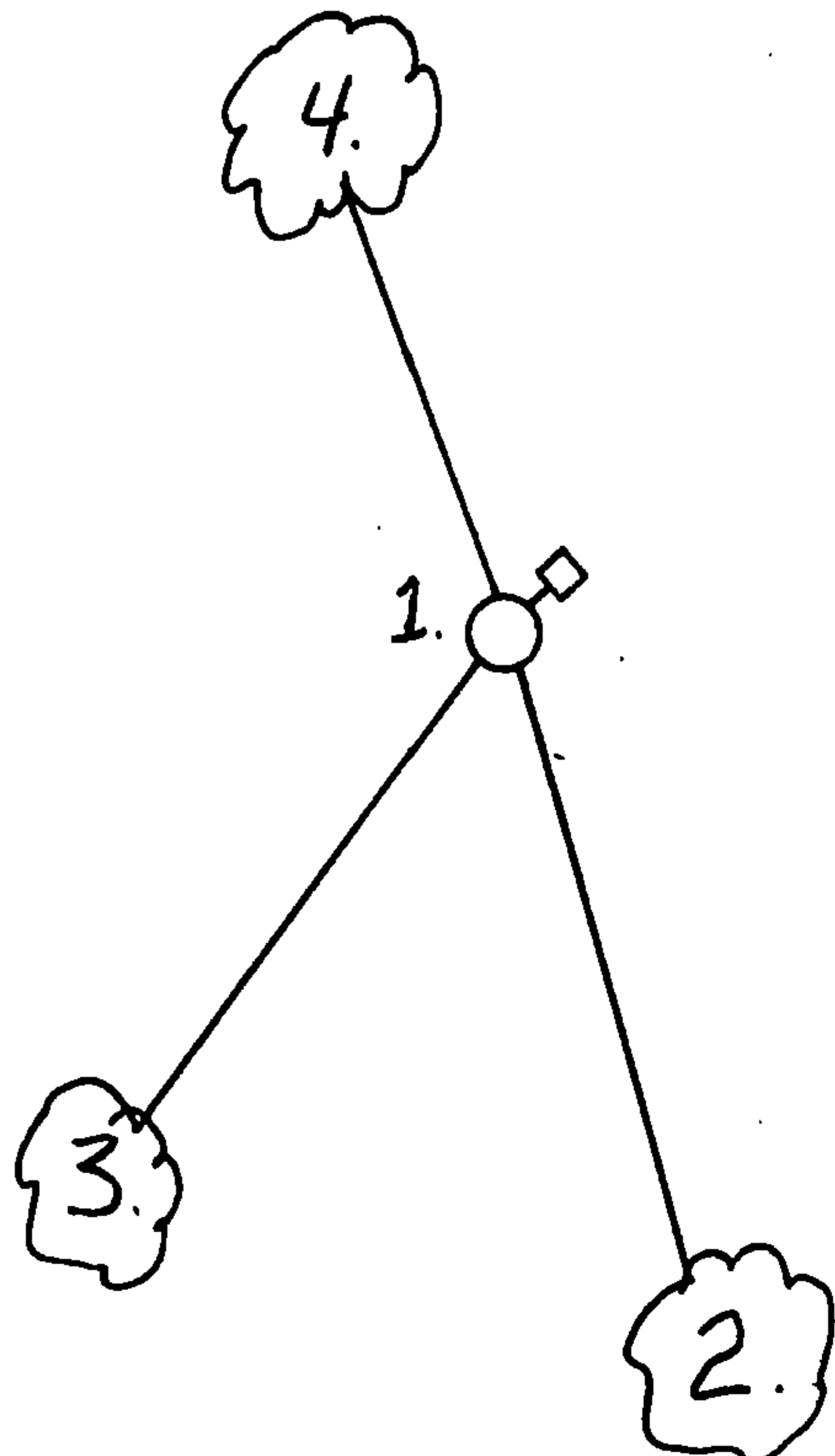
January 30, 1959, Nels Sandberg found 4" x 4" x 36" Cedar post.

August 22, 1984, Alan Harrison set proportionate position--searched area, found no evidence of corner location.

- (c) In the plan view drawing below, provide reference ties to at least 4 witness monuments, or, if the location is within a municipality, to at least 2 witness monuments. (Witness monuments shall be made of concrete, natural stone, iron or other equally durable material.) Describe witness monuments.

- (d) Show a plan view drawing depicting the relevant monuments and reference ties which is sufficient in detail to enable accurate relocation of the corner monument if the corner monument is disturbed. Indicate north.

- 1. 2" x 30" aluminum monument stamped to identify the corner; in a mound of stone.
2. Sugar, 6", S.19°E., 29.59'
3. Sugar, 7", S.36°W., 21.62'
4. Sugar, 6", N.29°W., 25.29'
5. Steel Sign Post, Northeast, 1.93'



REGISTER'S OFFICE }
Forest County, Wis. }
Received for record this 24th day
of January A. D., 1985 at
10:30 o'clock A. M. and
recorded in Vol. CORNER RESTORATIONS
on page P-9
Paul Aschenbrenner
REGISTER

(e) Describe any material discrepancy between the location of the corner as restored or reestablished and the location of that corner as previously restored or reestablished by distance and direction. Show the discrepancy on the plan view drawing under (d), above. Show the distances between the corner as previously restored or reestablished and (1) the corner as restored or reestablished, and (2) to at least 2 of the witness monuments shown on the drawing in (d), above.

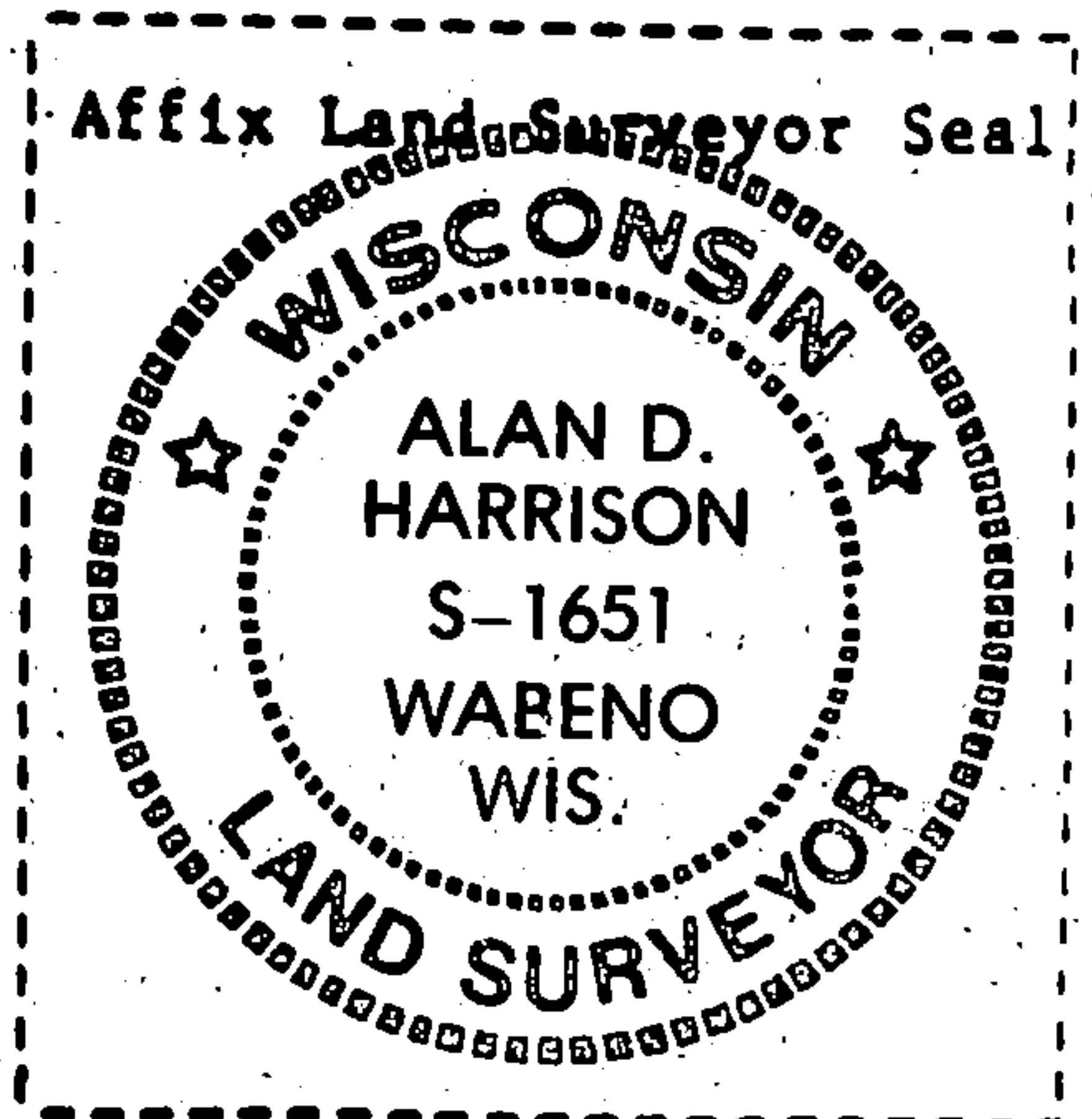
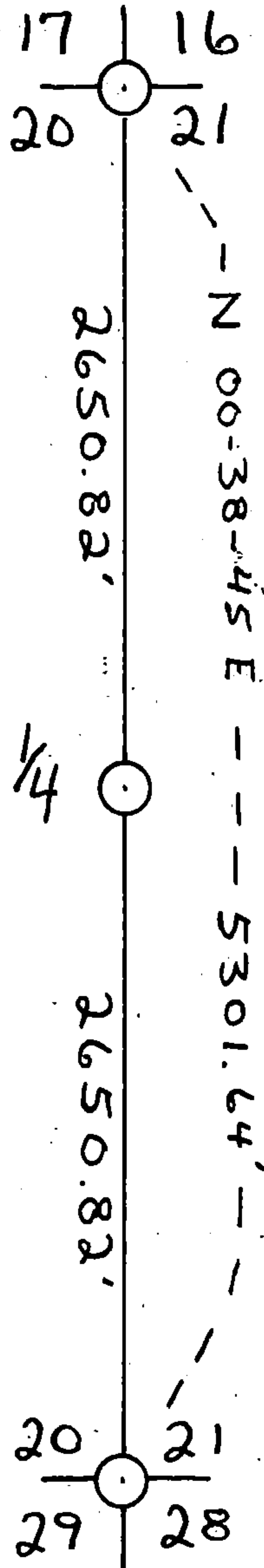
None.

(f) Was the corner restored through acceptance of (1) an obliterated evidence location, or, (2) a found perpetuated location?

No.

(g&h) Was the corner reestablished through lost corner proportionate methods? If so, show the method, including the directions and distances to other public land survey corners used as evidence or used for proportioning in determining the corner location?

Yes.



(i) I, Alan D. Harrison
 (type or print name) certify that the corner location shown on this record was determined by me or under my direction and control and that this U.S. Public Land Survey Monument Record is correct and complete to the best of my knowledge and belief.

Alan D. Harrison
 Signature

12/10/84
 Date

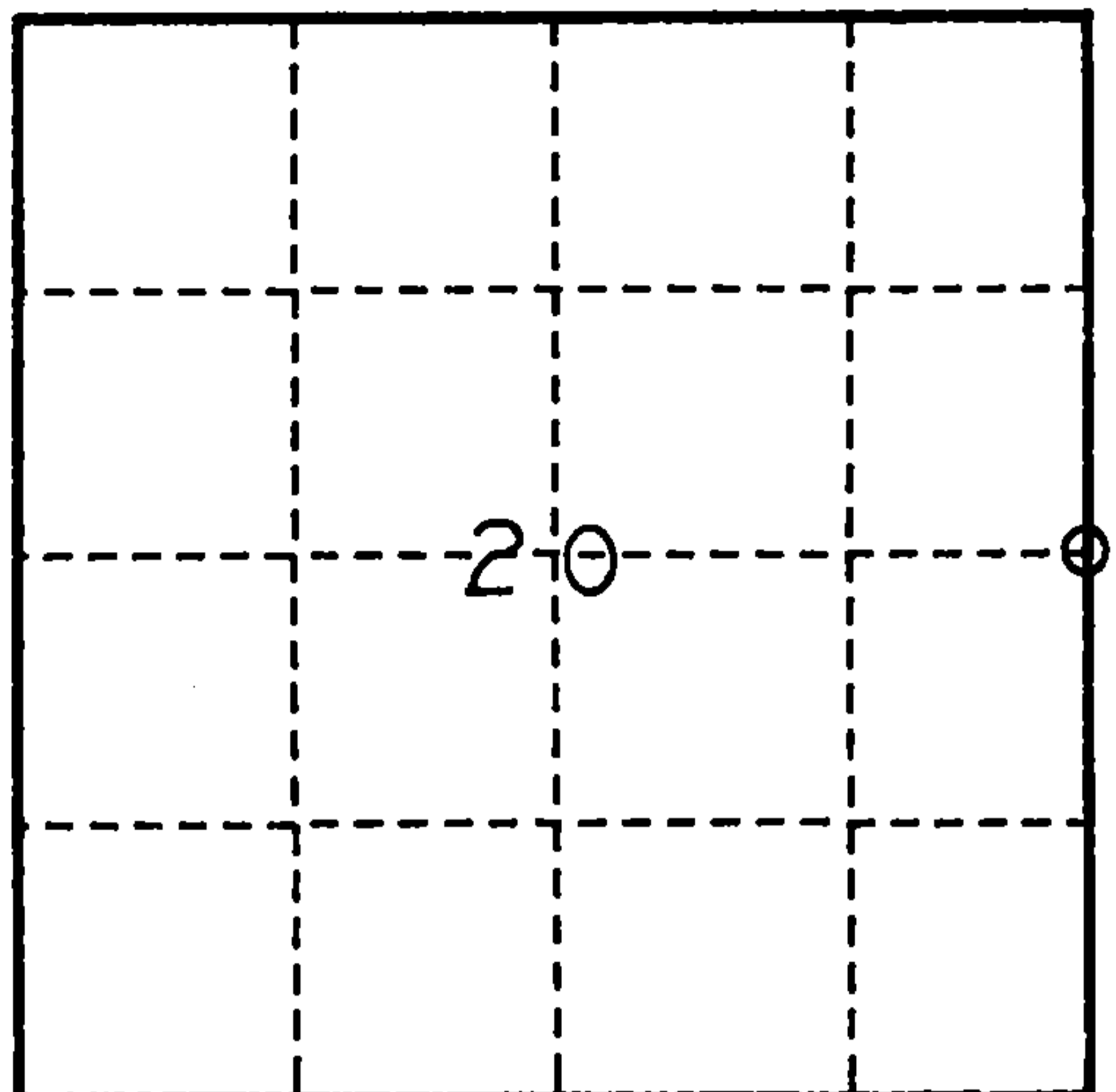
U. S. PUBLIC LAND SURVEY MONUMENT RECORD

INSTRUCTIONS:

This record shall show the location of the corner and shall include all of the following nine elements (a through i).

- (a) Identify the corner by reference to the U.S. public land survey system.
 O = Corner monument restored.

EAST 1/4 CORNER OF SECTION 20, TWP. 34 N., R. 16 EAST.



- (b) Describe any record evidence, monument evidence, occupational evidence, testimonial evidence or any other material evidence you considered, and whether the monument was found or placed.

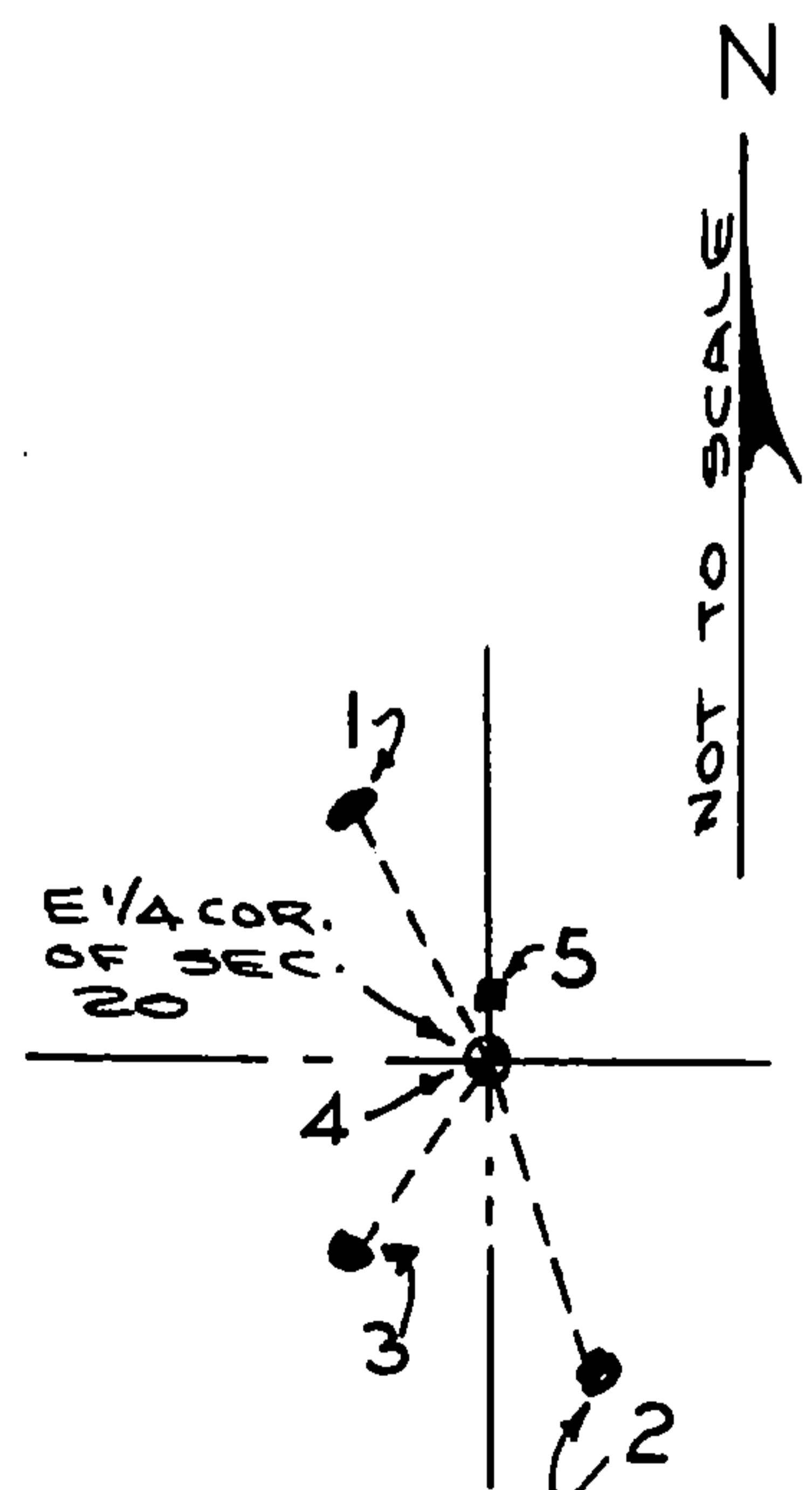
1858 - ORIGINAL SURVEY BY McBRIDE, SET WOOD POST, B.Ts - BEECH 20" S.81° E. 8 LKS., BEECH 18" N.48° W. 32 LKS.
 1959 - SANDBERG FOUND 4" X 4" CEDAR POST
 1984 - HARRISON R.L.S. NO. S-1651, SET 2" DIA. ALUMINUM MONUMENT AT CORNER, B.Ts - SUGAR 6" S.19° E. 29.59FT., SUGAR 7" S.36° W. 21.62FT., SUGAR 6" N.29° W. 25.29FT., WITNESS - STEEL SIGN POST NE 1.93FT.
 1993 - DOBBRATZ R.L.S. NO. S-973 FOUND MONUMENT, STEEL SIGN POST AND B.Ts. TIES TO B.Ts AND WITNESS DIFFER WITH LAND SURVEY MONUMENT RECORD.

- (c) In the plan view drawing below, provide reference ties to at least 4 witness monuments, or, if the location is within a municipality, to at least 2 witness monuments. (witness monuments shall be made of concrete, natural stone, iron or other equally durable material.)

- (d) Show a plan view drawing depicting the relevant monuments and reference ties which is sufficient in detail to enable accurate relocation of the corner monument if the corner monument is disturbed. Indicate north.

WITNESS

1. B.T. SUGAR 7" N.29° W. 26.00FT. (EXISTING)
2. B.T. SUGAR 7" S.19° E. 28.80FT. (EXISTING)
3. B.T. SUGAR 8" S.36° W. 21.08FT. (EXISTING)
4. 2" DIA. ALUMINUM MONUMENT AT 1/4 CORNER (EXISTING)
5. STEEL SIGN POST NORTH 1.37FT. (EXISTING)

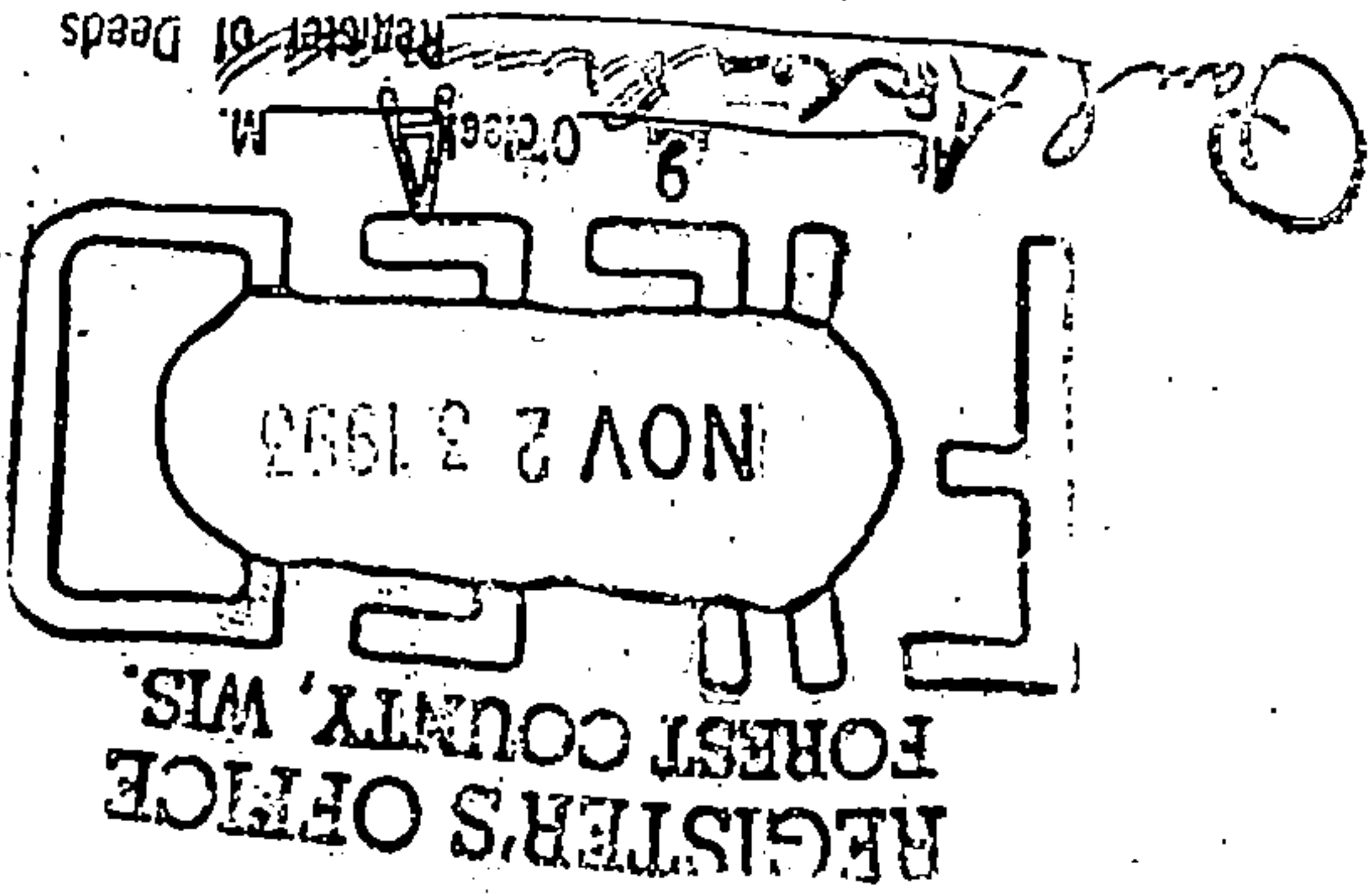


(e) Describe any material discrepancy between the location of the corner as restored or reestablished and the location of that corner as previously restored or reestablished by distance and direction. Show the discrepancy on the plan view drawing under (d). above. Show the distances between the corner as previously restored or reestablished and (1) the corner as restored or reestablished, and (2) to at least 2 of the witness monuments shown on the drawing in (d), above.

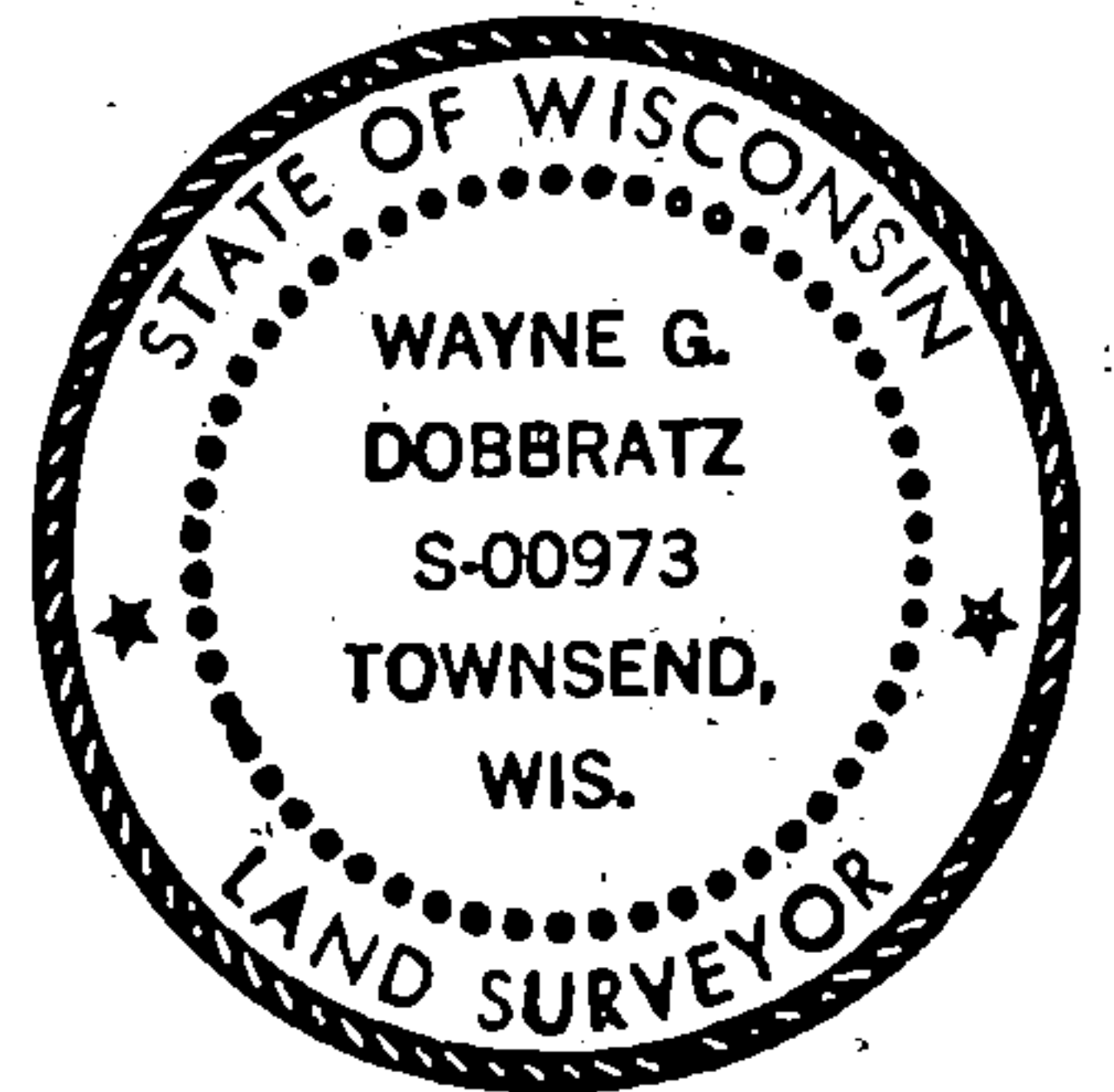
(f) Was the corner restored through acceptance of (1) an obliterated evidence location, or, (2) a found perpetuated location?

(2)

(g & h) Was the corner reestablished through lost corner proportionate methods? If so, show the method, including the directions and distances to other public land survey corners used as evidence or used for proportioning in determining the corner location?



Affix Land Surveyor Seal



WAYNE G. DOBBRATZ

(1) I, _____
 (type or print name) certify that the corner location shown on this record was determined by me or under my direction and control and that this U.S. Public Land Survey Monument Record is correct and complete to the best of my knowledge and belief.

Wayne G. Dobbratz 9/4/93
 Signature Date

CERTIFICATE READY FOR FILING:

Ralph Cella 11-5-93
 Acting District Ranger