

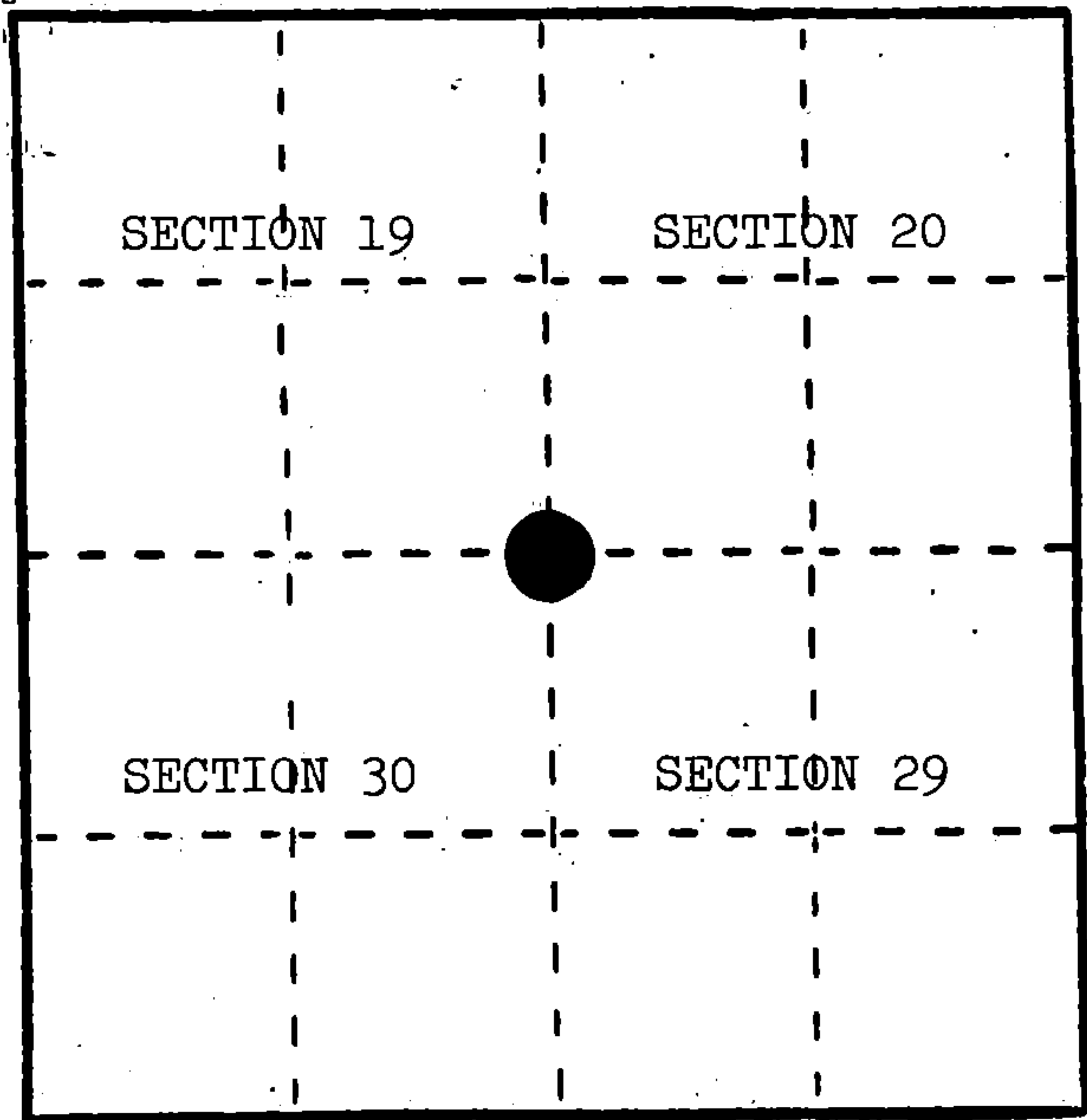
U. S. PUBLIC LAND SURVEY MONUMENT RECORD

INSTRUCTIONS : This record shall show the location of the corner and shall include all of the following nine elements (a through i).

(a) Identify the corner by reference to the U.S. public land survey system.

○ = Corner monument restored.

Corner to Sections 19, 20, 29, and 30, T.34N., R.16E.



(b) Describe any record evidence, monument evidence, occupational evidence, testimonial evidence or any other material evidence you considered, and whether the monument was found or placed.

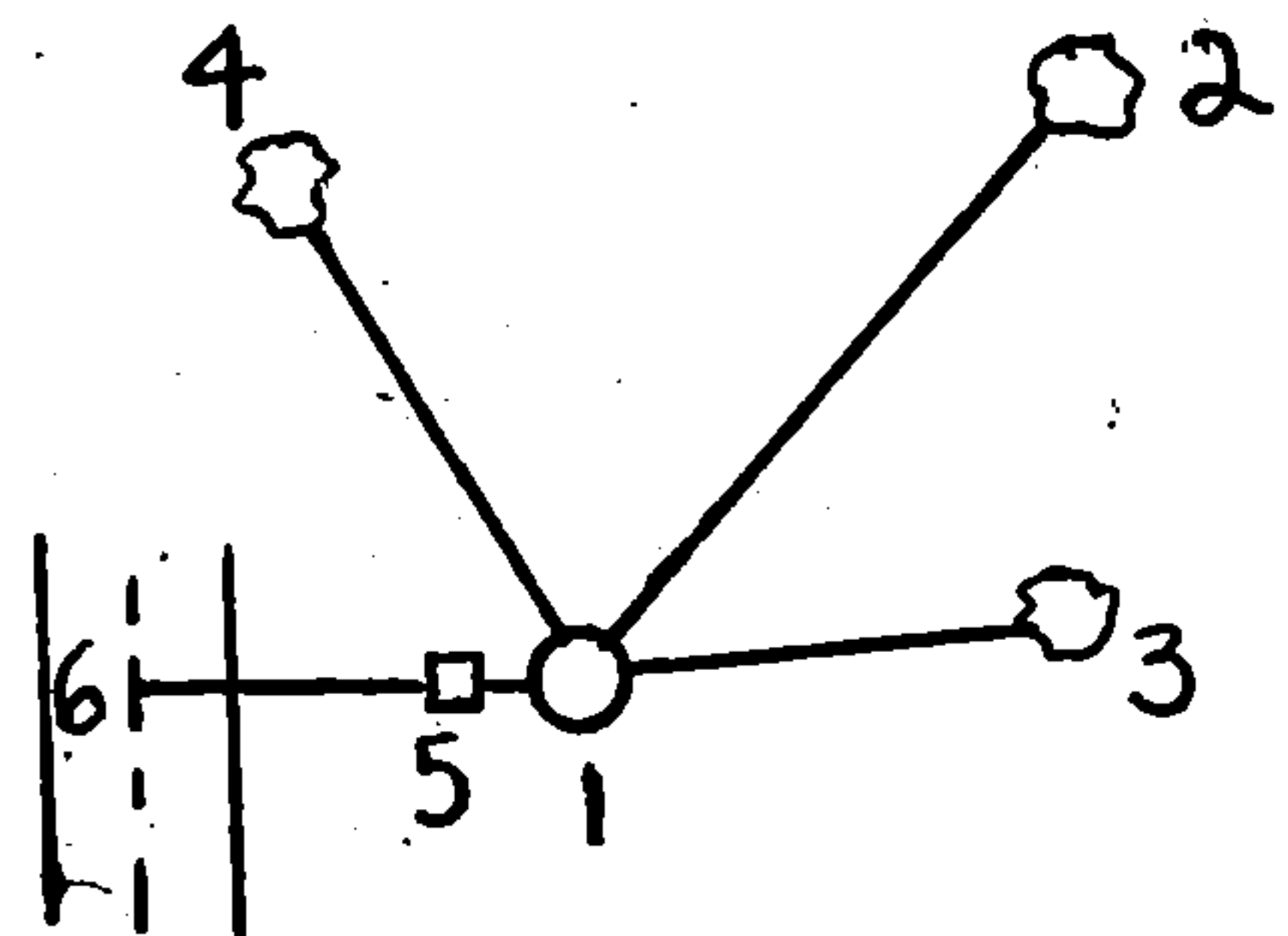
In 1858, James McBride set section post with the following BTs: Hemlock, 10", N.56°E., 48 links; Hemlock, 12", S.57°E., 29 links; Birch, 16", S.37°W., 50 links; Hemlock, 10", N.28°W., 38 links.

July 12, 1984, Alan Harrison set proportionate position--searched area, found no evidence of corner position. Proportionate position falls 40' east of center of Knowles Creek Road. Construction may have destroyed original evidence.

(c) In the plan view drawing below, provide reference ties to at least 4 witness monuments, or, if the location is within a municipality, to at least 2 witness monuments. (Witness monuments shall be made of concrete, natural stone, iron or other equally durable material.) Describe witness monuments.

(d) Show a plan view drawing depicting the relevant monuments and reference ties which is sufficient in detail to enable accurate relocation of the corner monument if the corner monument is disturbed. Indicate north.

1. 2" x 60" aluminum monument stamped to identify the corner.
2. Black Cherry, 8", N.38°E., 65.22'
3. Black Cherry, 4", N.81°E., 39.21'
4. Aspen, 7", N.24°W., 59.90'
5. Steel Sign Post, West, 1.13'
6. Centerline of FR-2349, West, 42.90'



REGISTER'S OFFICE }
Forest County, Wis. }

Received for record this...*24th* day
of...*January*...A. D., 19*85* at
...*10:30* o'clock...*A*...M. and

recorded in Vol. **CORNER RESTORATIONS**
on page *R-5*

Paul Achenbrenner
REGISTER

(e) Describe any material discrepancy between the location of the corner as restored or reestablished and the location of that corner as previously restored or reestablished by distance and direction. Show the discrepancy on the plan view drawing under (d), above. Show the distances between the corner as previously restored or reestablished and (1) the corner as restored or reestablished, and (2) to at least 2 of the witness monuments shown on the drawing in (d), above.

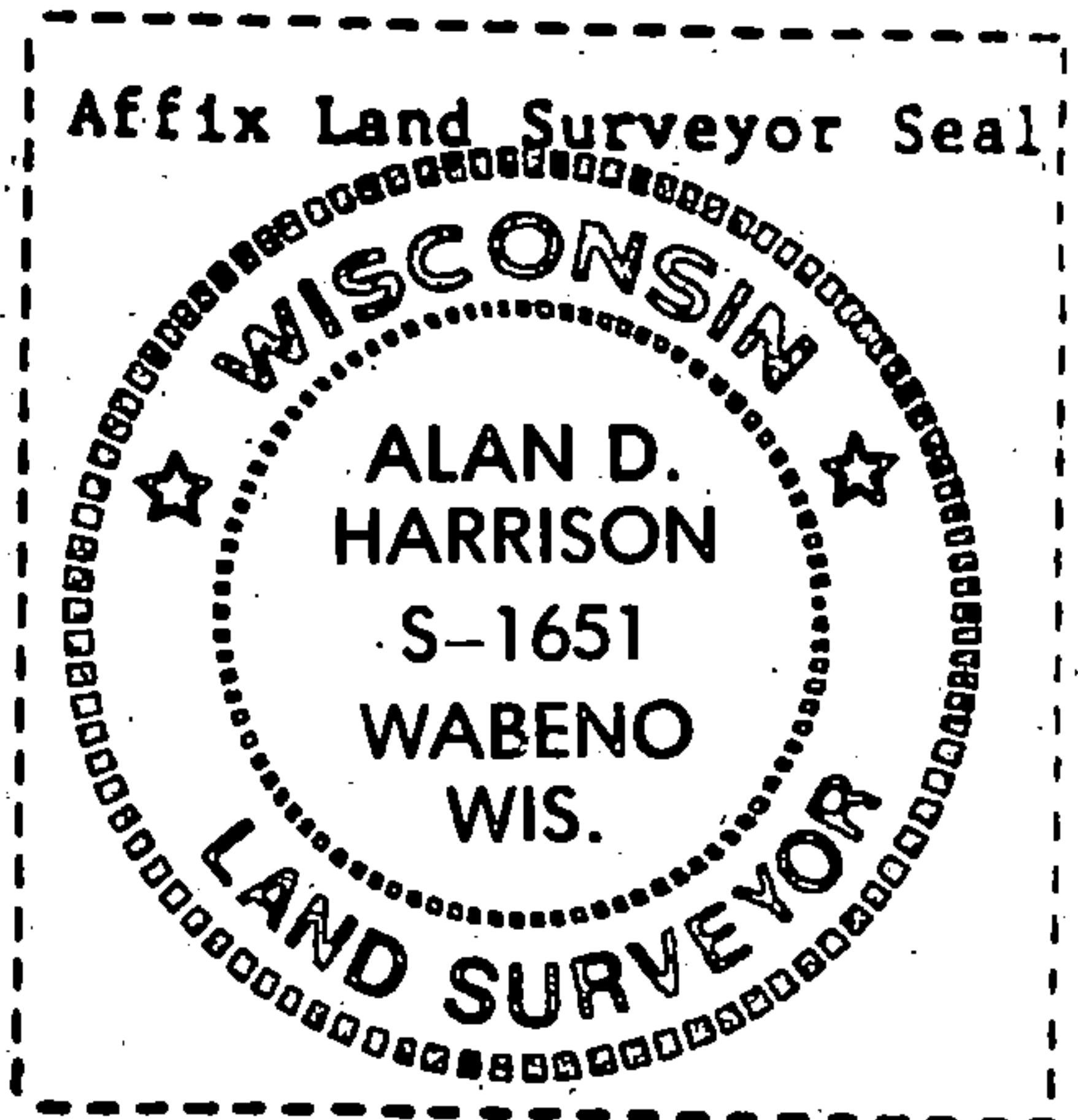
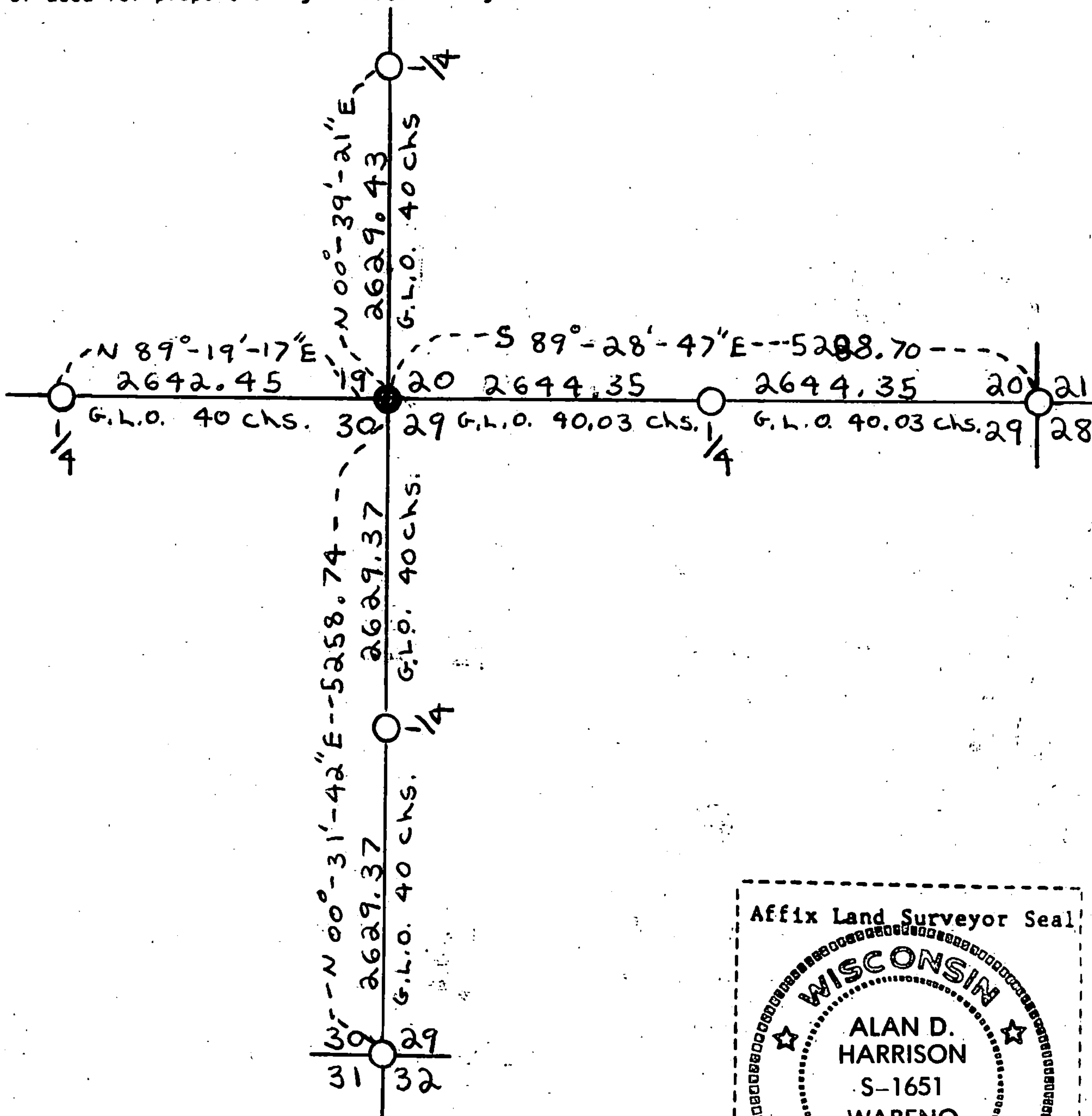
None.

(f) Was the corner restored through acceptance of (1) an obliterated evidence location, or, (2) a found perpetuated location?

No.

(g&h) Was the corner reestablished through lost corner proportionate methods? If so, show the method, including the directions and distances to other public land survey corners used as evidence or used for proportioning in determining the corner location?

Yes.



(1) Alan D. Harrison

(type or print name) certify that the corner location shown on this record was determined by me or under my direction and control and that this U.S. Public Land Survey Monument Record is correct and complete to the best of my knowledge and belief.

Alan D. Harrison 11/27/84
 Signature Date

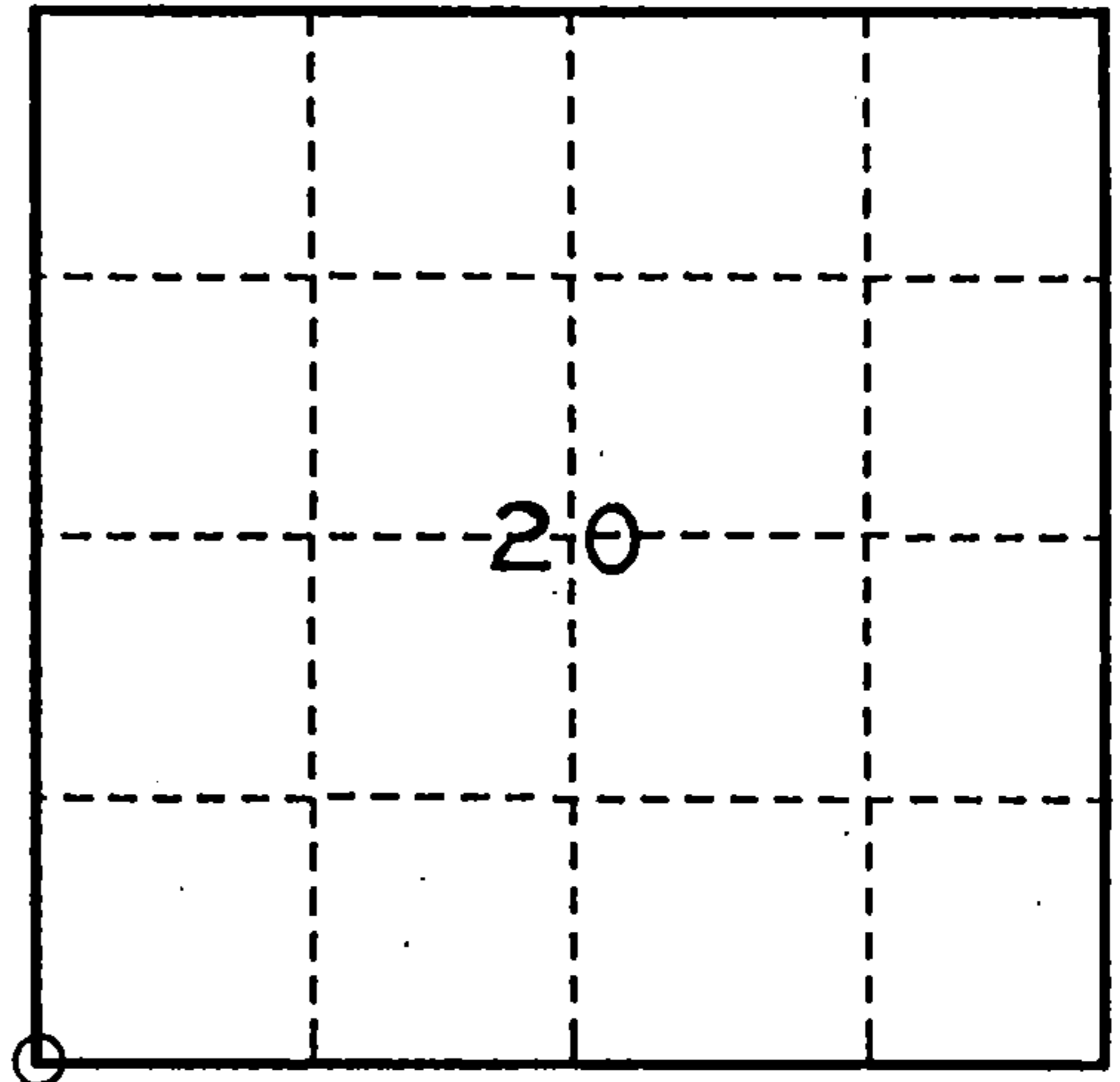
U. S. PUBLIC LAND SURVEY MONUMENT RECORD

INSTRUCTIONS:

This record shall show the location of the corner and shall include all of the following nine elements (a through i).

- (a) Identify the corner by reference to the U.S. public land survey system.
- = Corner monument restored.

SOUTHWEST CORNER OF SECTION 20, TWP. 34 N., R.16 E.



- (b) Describe any record evidence, monument evidence, occupational evidence, testimonial evidence or any other material evidence you considered, and whether the monument was found or placed.

1858- ORIGINAL SURVEY BY McBRIDE, B.Ts. HEMLOCK 10" N.56° E. 48 LKS., HEMLOCK 12" S.57° E. 29 LKS., BIRCH 16" S.37° W. 50 LKS., HEMLOCK 10" N.28° W. 38 LKS.

1984- HARRISON R.L.S. NO.S-1651, SET 2" DIA. ALUMINUM MONUMENT, B.Ts BLACK CHERRY 8" N.38° E. 65.22, BLACK CHERRY 4" N.81° E. 39.21FT., ASPEN 7" N.24° W. 59.90FT., WITNESS -STEEL SIGN POST WEST 1.13FT., REFERENCE - CENTERLINE OF FR #2349 WEST 42.90FT.

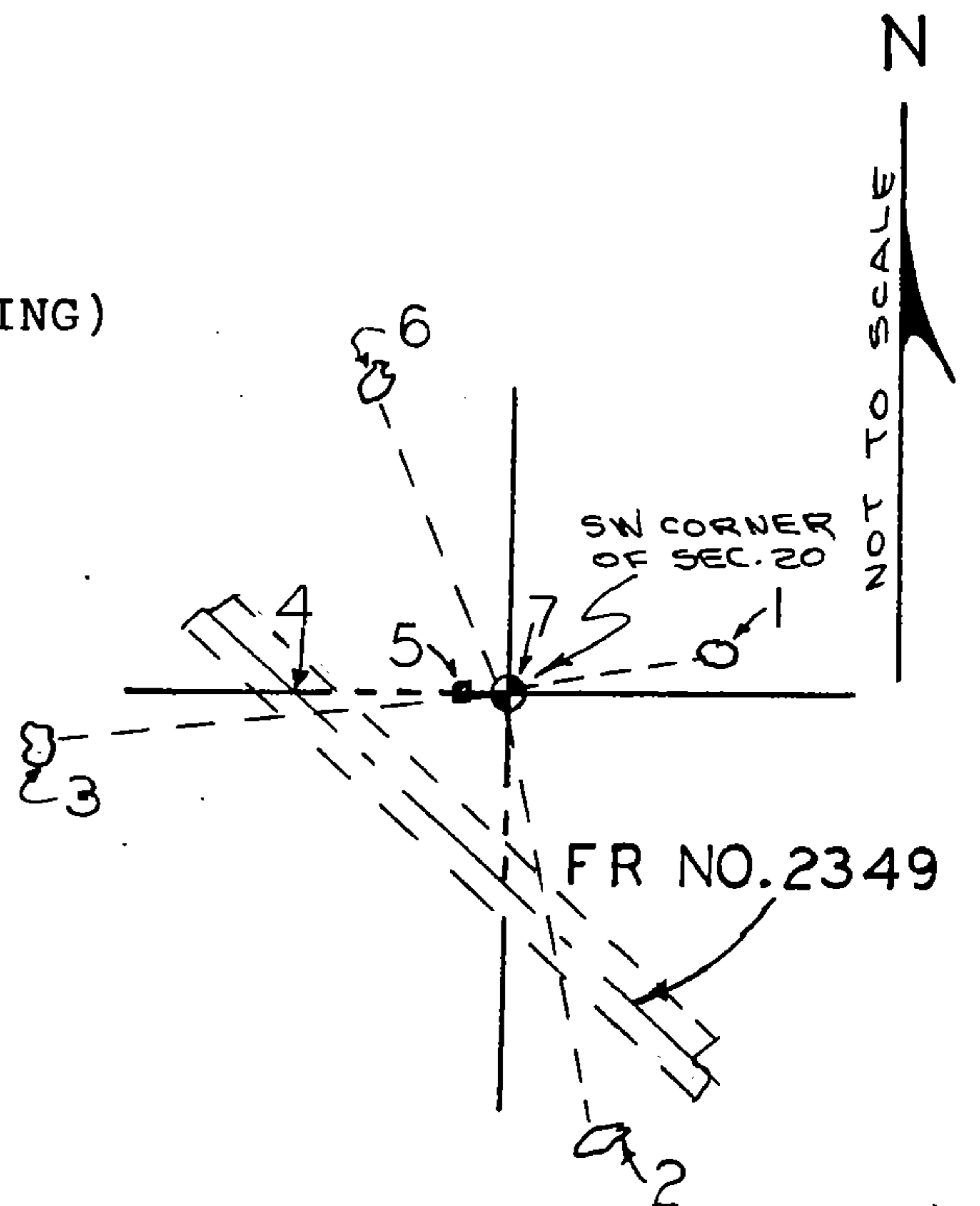
1993 - DOBBRATZ R.L.S. NO. S-973, FOUND MONUMENT, STEEL SIGN POST, AND B.Ts EXCEPT B.T. BLACK CHERRY 8" N.38° E. IS DOWN.

- (c) In the plan view drawing below, provide reference ties to at least 4 witness monuments, or, if the location is within a municipality, to at least 2 witness monuments. (witness monuments shall be made of concrete, natural stone, iron or other equally durable material.)

- (d) Show a plan view drawing depicting the relevant monuments and reference ties which is sufficient in detail to enable accurate relocation of the corner monument if the corner monument is disturbed. Indicate north.

WITNESS AND REFERENCE

1. B.T. BLACK CHERRY 4" N.81° E. 39.21FT. (EXISTING)
2. B.T. ASPEN 6" S.12° E. 86.70FT. (NEW)
3. B.T. BLACK CHERRY 6" S.84° W. 91.03FT. (NEW)
4. CENTERLINE FR # 2349 WEST 42.90FT.
5. STEEL SIGN POST WEST 1.13FT. (EXISTING)
6. B.T. ASPEN 8" N.24° W. 59.90FT. (EXISTING)
7. 2" DIA. ALUMINUM MONUMENT (EXISTING)



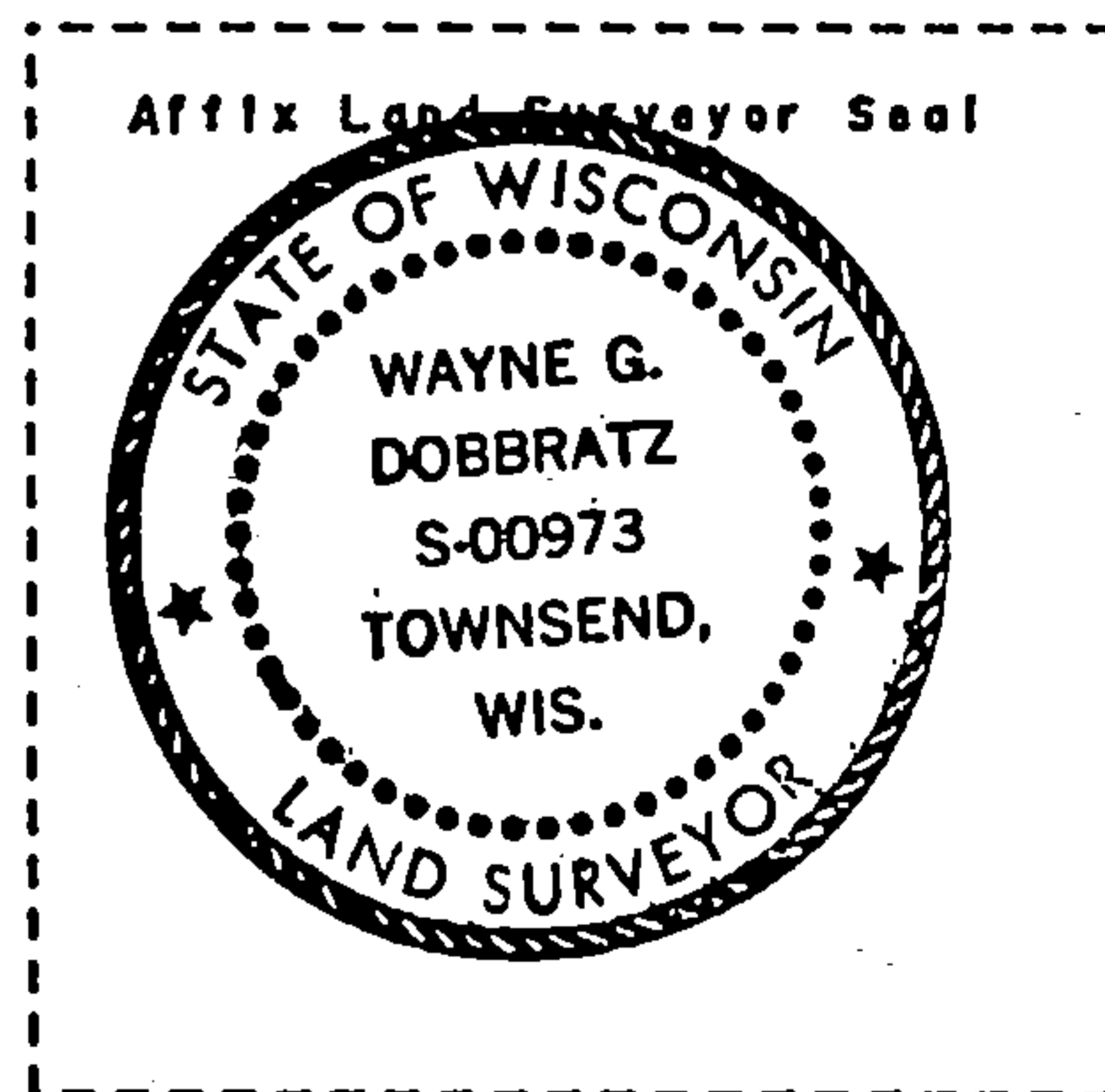
(e) Describe any material discrepancy between the location of the corner as restored or reestablished and the location of that corner as previously restored or reestablished by distance and direction. Show the discrepancy on the plan view drawing under (d), above. Show the distances between the corner as previously restored or reestablished and (1) the corner as restored or reestablished, and (2) to at least 2 of the witness monuments shown on the drawing in (d), above.

(f) Was the corner restored through acceptance of (1) an obliterated evidence location, or, (2) a found perpetuated location?

(2)

(g & h) Was the corner reestablished through lost corner proportionate methods? If so, show the method, including the directions and distances to other public land survey corners used as evidence or used for proportioning in determining the corner location?

REGISTER'S OFFICE
FOREST COUNTY, WIS.
NOV 23 1993
At 9 O'clock A.M.
Paul A. Schmitt, Register of Deeds



(1) I, WAYNE G. DOBBRATZ

(type or print name) certify that the corner location shown on this record was determined by me or under my direction and control and that this U.S. Public Land Survey Monument Record is correct and complete to the best of my knowledge and belief.

Wayne G. Dobbratz 7/31/93
Signature Date

CERTIFICATE READY FOR FILING:

Ralph Bell 11-5-93
Acting District Ranger