

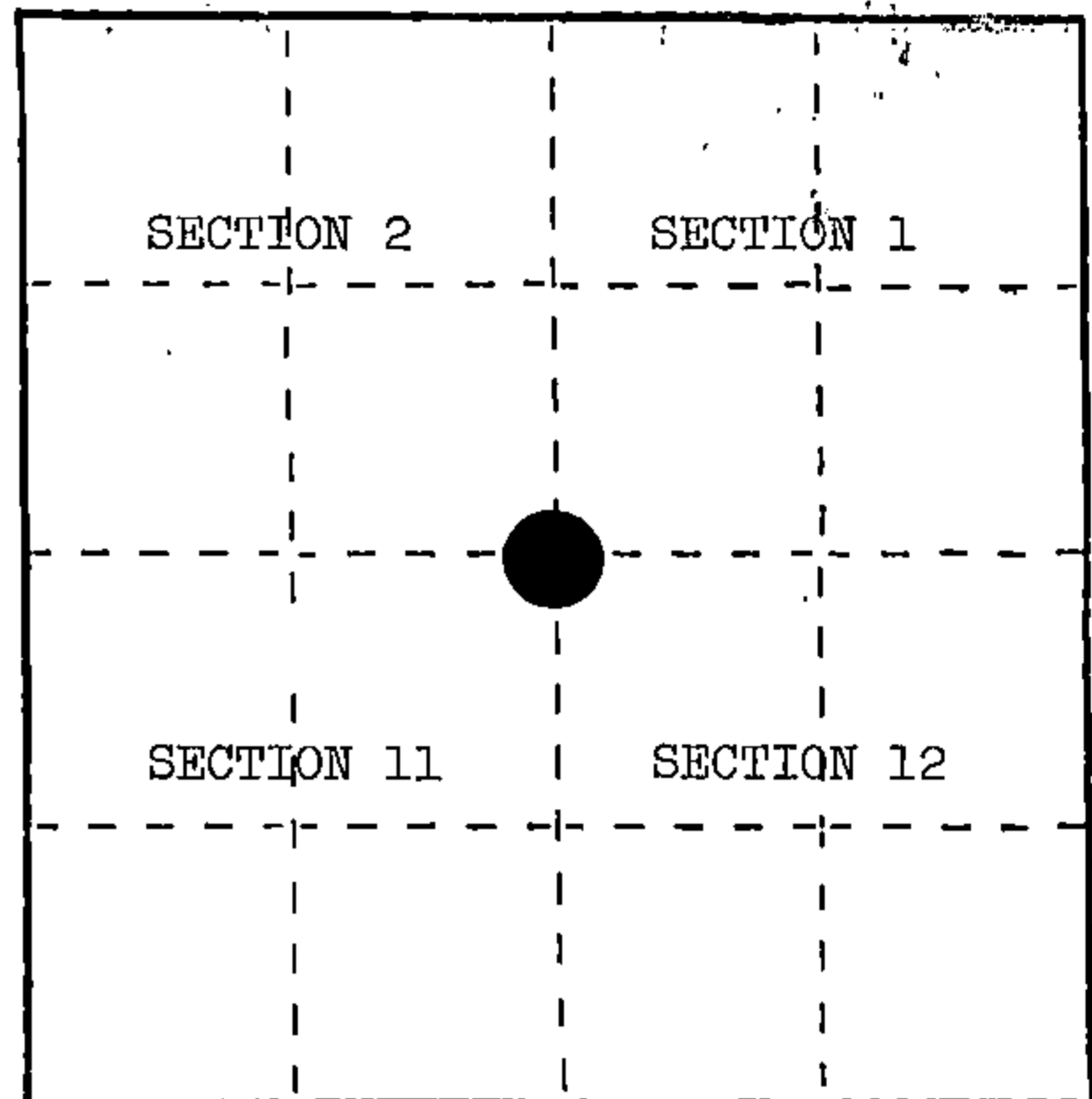
U. S. PUBLIC LAND SURVEY MONUMENT RECORD

INSTRUCTIONS: This record shall show the location of the corner and shall include all of the following nine elements (a through i).

(a) Identify the corner by reference to the U.S. public land survey system.

○ = Corner monument restored.

Section corner to Sections 1, 2, 11, and 12, T.34N., R.15E.



(b) Describe any record evidence, monument evidence, occupational evidence, testimonial evidence or any other material evidence you considered, and whether the monument was found or placed.

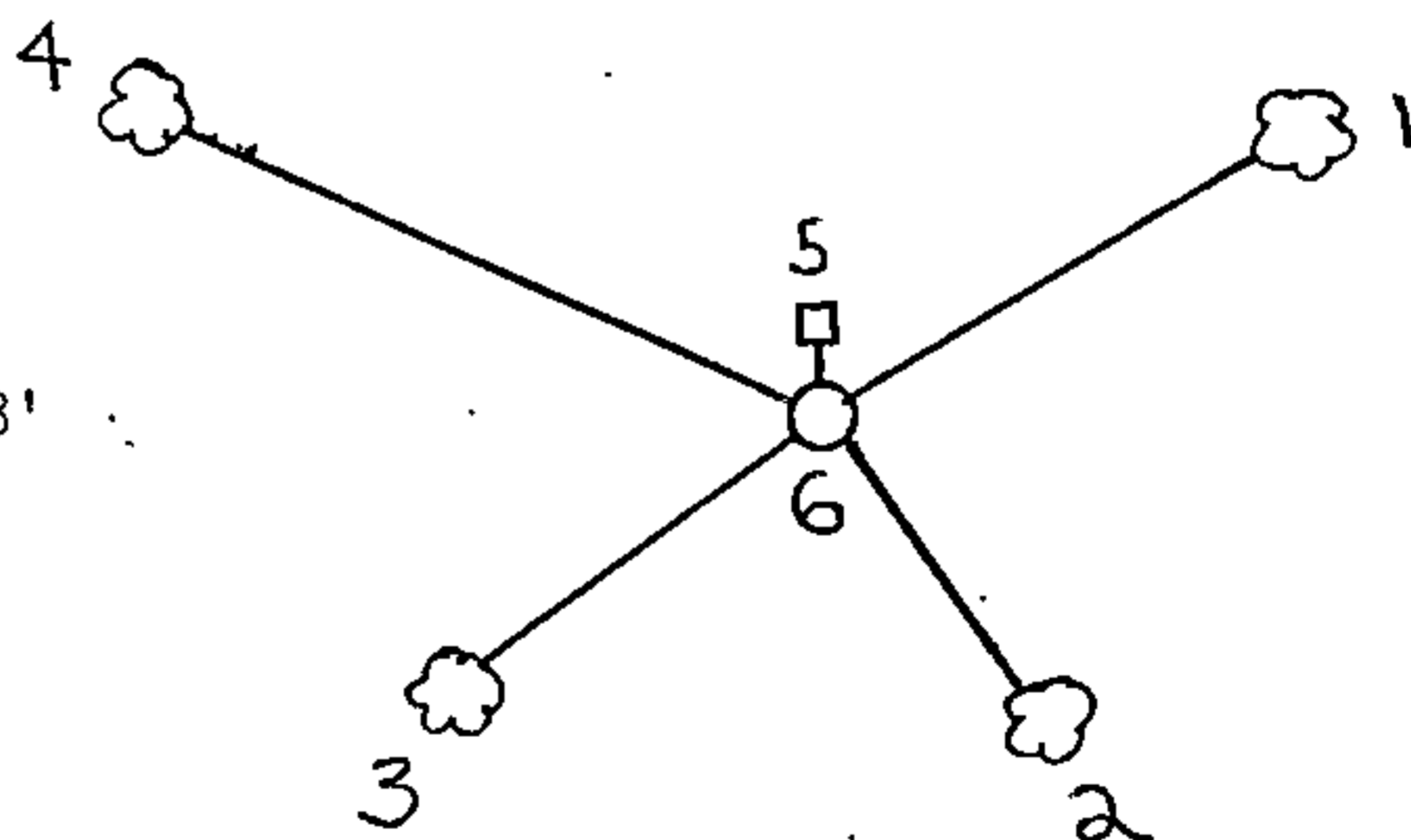
In June, 1859, James McBride set section post with the following BTs: Sugar, 10", N.54°W., 20 links; Sugar, 12", N.20°E., 21 links; Hemlock, 30", S.56°E., 39 links; Elm, 12", S.55°W., 29 links.

June 20, 1984, Milo Stefan found 1 1/4" x 36" iron pipe with both ends hand forged shut--round on top and pointed on the bottom. Pipe similar to Bay Shore Lumber Company pipes found in T.34N., R.16E. Fence corner of fences west and north. Homestead in area has destroyed most evidence of original survey. Replaced iron pipe with a 2" x 36" aluminum monument.

(c) In the plan view drawing below, provide reference ties to at least 4 witness monuments, or, if the location is within a municipality, to at least 2 witness monuments. (Witness monuments shall be made of concrete, natural stone, iron or other equally durable material.) Describe witness monuments.

(d) Show a plan view drawing depicting the relevant monuments and reference ties which is sufficient in detail to enable accurate relocation of the corner monument if the corner monument is disturbed. Indicate north.

1. Clump of Basswood, 8", N.47°E., 63.03'
2. Elm, 6", S.33°E., 27.99'
3. Aspen, 6", S.30°W., 35.69'
4. Hemlock, 24", N.76°W., 94.06'
5. Steel Sign Post, North, 1.3'
6. 2" x 36" aluminum monument stamped to identify the corner.



REGISTER'S OFFICE }
Forest County, Wis. }

Received for record this... 11th day
of... January ... A. D., 1985 at

... 1:00 o'clock... P... M. and
recorded in Vol. CORNER RESTORATIONS

on page E-21
Paul Aschenbrenner
REGISTER

(e) Describe any material discrepancy between the location of the corner as restored or reestablished and the location of that corner as previously restored or reestablished by distance and direction. Show the discrepancy on the plan view drawing under (d), above. Show the distances between the corner as previously restored or reestablished and (1) the corner as restored or reestablished, and (2) to at least 2 of the witness monuments shown on the drawing in (d), above.

(f) Was the corner restored through acceptance of (1) an obliterated evidence location, or, (2) a found perpetuated location?

(2) a found perpetuated location.

(g&h) Was the corner reestablished through lost corner proportionate methods? If so, show the method, including the directions and distances to other public land survey corners used as evidence or used for proportioning in determining the corner location?

No.

Affix Land Surveyor Seal



Milo E. Stefan

(Type or print name) certify that the corner location shown on this record was determined by me or under my direction and control and that this U.S. Public Land Survey Monument Record is correct and complete to the best of my knowledge and belief.

Signature

Date

Milo E. Stefan

12/20/84

Document Number
189330

REGISTER'S OFFICE
Forest County, Wis.
Received for record this 18th day
of November A.D., 2005 at
3:55 o'clock P. M. and recorded
in Vol. Corner Restoration
page E-21
Kay Swanson, Deputy
Register of Deeds

U.S. PUBLIC LAND SURVEY MONUMENT RECORD

(AS REQUIRED BY S. A-E 5.02, WI ADM. CODE)

HISTORY OF ORIGINAL CORNER ESTABLISHMENT AND SUBSEQUENT RESTORATIONS AND DESCRIPTION OF ANY RECORD, MONUMENT, OCCUPATIONAL, TESTIMONIAL, OR OTHER EVIDENCE CONSIDERED:
1859 - JAMES McBRIDE, SURVEYOR, SET POST

SET THE FOLLOWING WITNESSES:

SUGAR MAPLE 10" N54°W 20 LINKS
SUGAR MAPLE 12" N20°E 21 LINKS
HEMLOCK 30" S56°E 39 LINKS
ELM 12" S55°W 29 LINKS

1984 - MILO E. STEFAN, SURVEYOR, S-1558, FOUND A 1.25" X 36" IRON PIPE WITH BOTH ENDS HAND FORGED SHUT, ROUND ON TOP AND POINTED ON THE BOTTOM. PIPE SIMILAR TO BAY SHORE LUMBER COMPANY PIPES FOUND IN T34N-R16E. FENCE CORNER OF FENCES WEST AND NORTH. HOMESTEAD IN AREA HAS DESTROYED MOST EVIDENCE OR ORIGINAL SURVEY. REPLACED IRON PIPE WITH A 2" X 36" ALUMINUM MONUMENT STAMPED TO IDENTIFY THE CORNER.

SET THE FOLLOWING WITNESSES:

CLUMP OF BASSWOOD 8" N47°E 63.03 FEET
ELM 6" S33°E 27.99 FEET
ASPEN 6" S30°W 35.69 FEET
HEMLOCK 24" N76°W 94.06 FEET
STEEL POST NORTH 1.30 FEET

CORNER WAS: (CHECK ALL THAT APPLY)

RESTORED THROUGH ACCEPTANCE OF AN OBLITERATED LOCATION

RESTORED THROUGH ACCEPTANCE OF A FOUND PERPETUATED LOCATION

CONSIDERED A LOST CORNER AND REESTABLISHED THROUGH LOST CORNER PROPORTIONATE METHODS (INCLUDING A PLAN VIEW DRAWING SHOWING DISTANCES AND DIRECTIONS TO OTHER PUBLIC LAND SURVEY CORNERS USED FOR PROPORTIONING AND DETERMINING THE CORNER LOCATION)

CORNER LOCATION

RESTORED OR REESTABLISHED IN A LOCATION THAT DIFFERS FROM A PREVIOUS RESTORATION OF REESTABLISHMENT (INCLUDE A PLAN VIEW DRAWING AND INDICATE WHAT WAS SET AND/OR FOUND)

DESCRIBE THE MONUMENT AND ACCESSORIES USED TO PERPETUATE THE LOCATION OF THIS CORNER. (INCLUDE A PLAN VIEW DRAWING AND INDICATE WHAT WAS SET AND/OR FOUND)

FOUND A 2" PIPE UP 4" WITH A 3.25" STAMPED ALUMINUM CAP.

FOUND THE FOLLOWING WITNESSES:

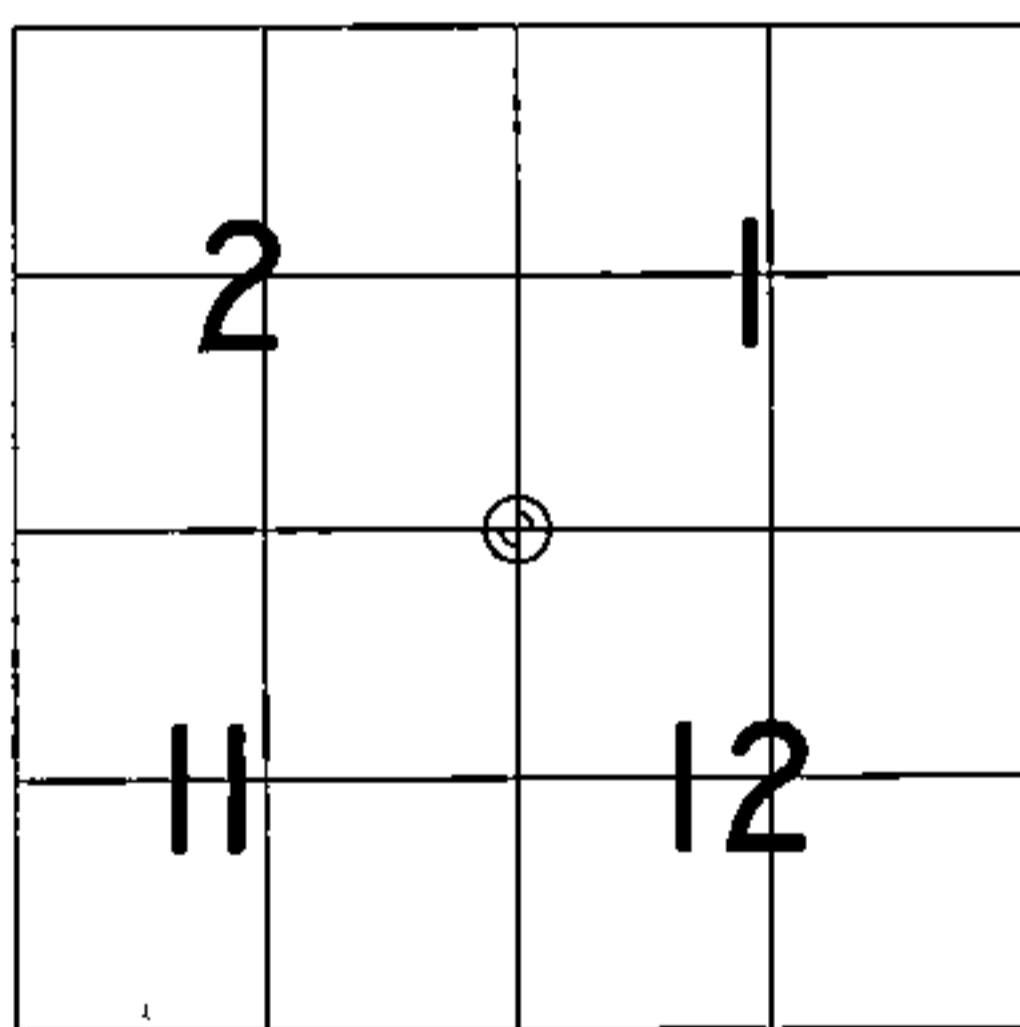
HEMLOCK 29" N73°W 94.00 FEET - SET NAIL IN TREE.
BASSWOOD 7" N47°E 62.30 FEET - SET NAIL IN TREE.

SET THE FOLLOWING WITNESSES:

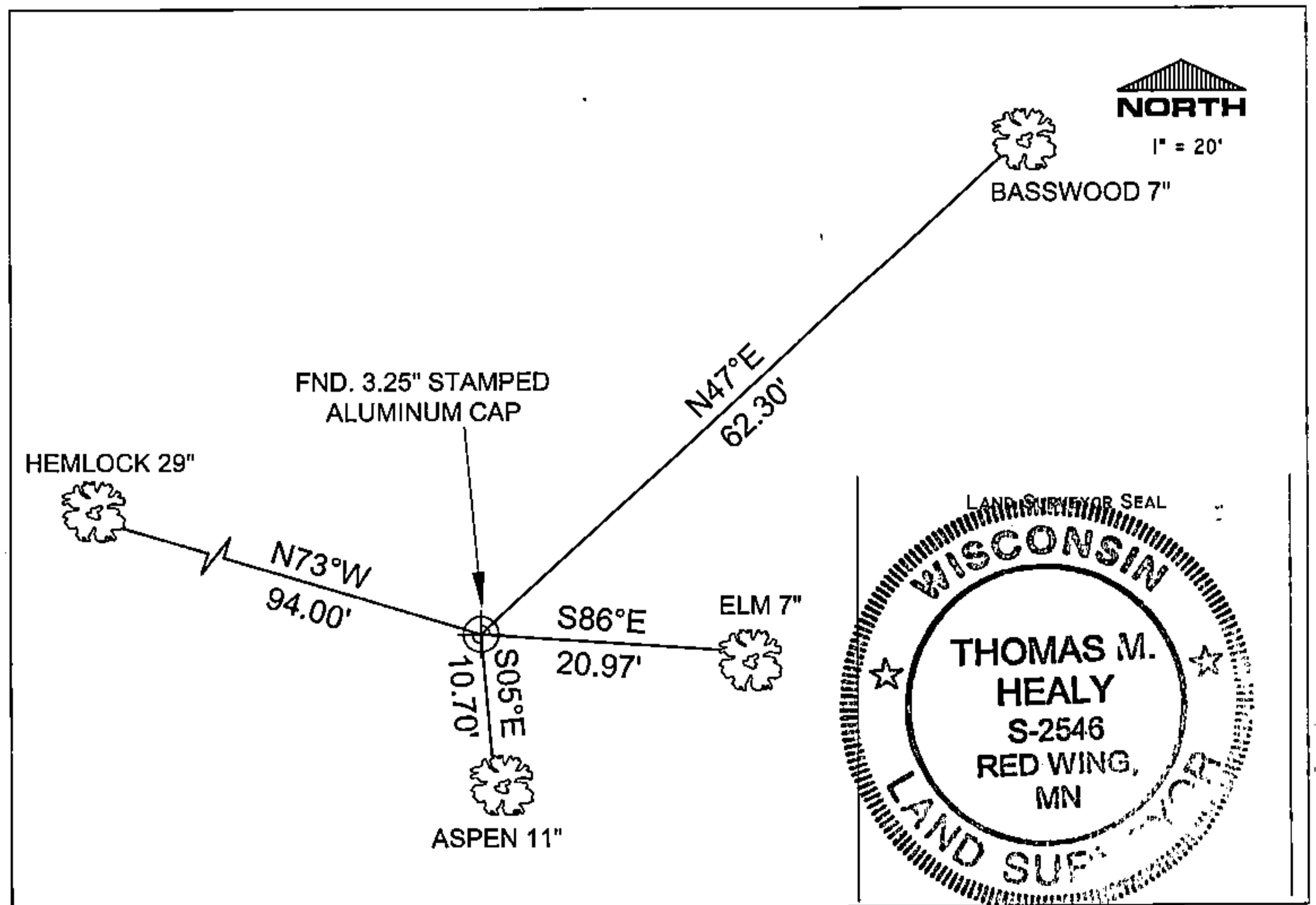
ELM 7" S86°E 20.97 FEET - SET NAIL IN TREE.
ASPEN 11" S05°E 10.70 FEET - SET NAIL IN TREE.
STEEL SIGN NORTH 1.5' FEET

ALL TREES HAVE STUMP AND CHEST BLAZES.

THE SOUTHEAST
CORNER OF SECTION 2,
T. 34 N., R. 15 E.,
FOREST COUNTY, WISCONSIN



⊕ = LOCATION OF CORNER



I, THOMAS M. HEALY R.L.S. 2546

(TYPE OR PRINT NAME) CERTIFY THAT THE CORNER LOCATION SHOWN ON THIS ABOVE RECORD WAS DETERMINED BY ME OR UNDER MY DIRECTION AND CONTROL AND THAT THIS U.S. PUBLIC LAND SURVEY MONUMENT RECORD IS CORRECT AND COMPLETE TO THE BEST OF MY KNOWLEDGE AND BELIEF.

INDEX No. E-21

Thomas M. Healy 11-17-05
SIGNATURE DATE

43415020000

E-21