

CERTIFIED LAND CORNER RESTORATION

State of Wisconsin }
County of Forest } ss.

I Jean F. Resvick, do hereby certify that on the 1st day of June, 1976, I found evidence of the Southeast section corner of Section 33 Township 34 North Range 14 East, Fourth Principal Meridian, as described hereon; and that from this evidence I established a new monument and accessories as described hereon to perpetuate the original location of this corner.

Description of original monument and accessories and subsequent restorations: Surveyed in 1857 by Alfred Millard. 80.00 chains west between Sections 3 and 34, set post. Hemlock 10, N25E, 48 lks. Lynn 12, S49W, 37 lks. Y. Birch 40, S45E, 30 lks. Sugar 24, N50W, 42 lks.

Monumented in 1962 by Jean Resvick and Victor Hedman and recorded in Landglade County, Document number 202744, dated February 6, 1964, Volume 1, Page 9. Yellow Birch 5, N15-30E, 74.40 ft. Elm 7, S47-30E, 21.65 ft. Sugar 12, S63W, 39.30 ft. Sugar 14, N52W, 55.80 ft.

Description of corner evidence found:

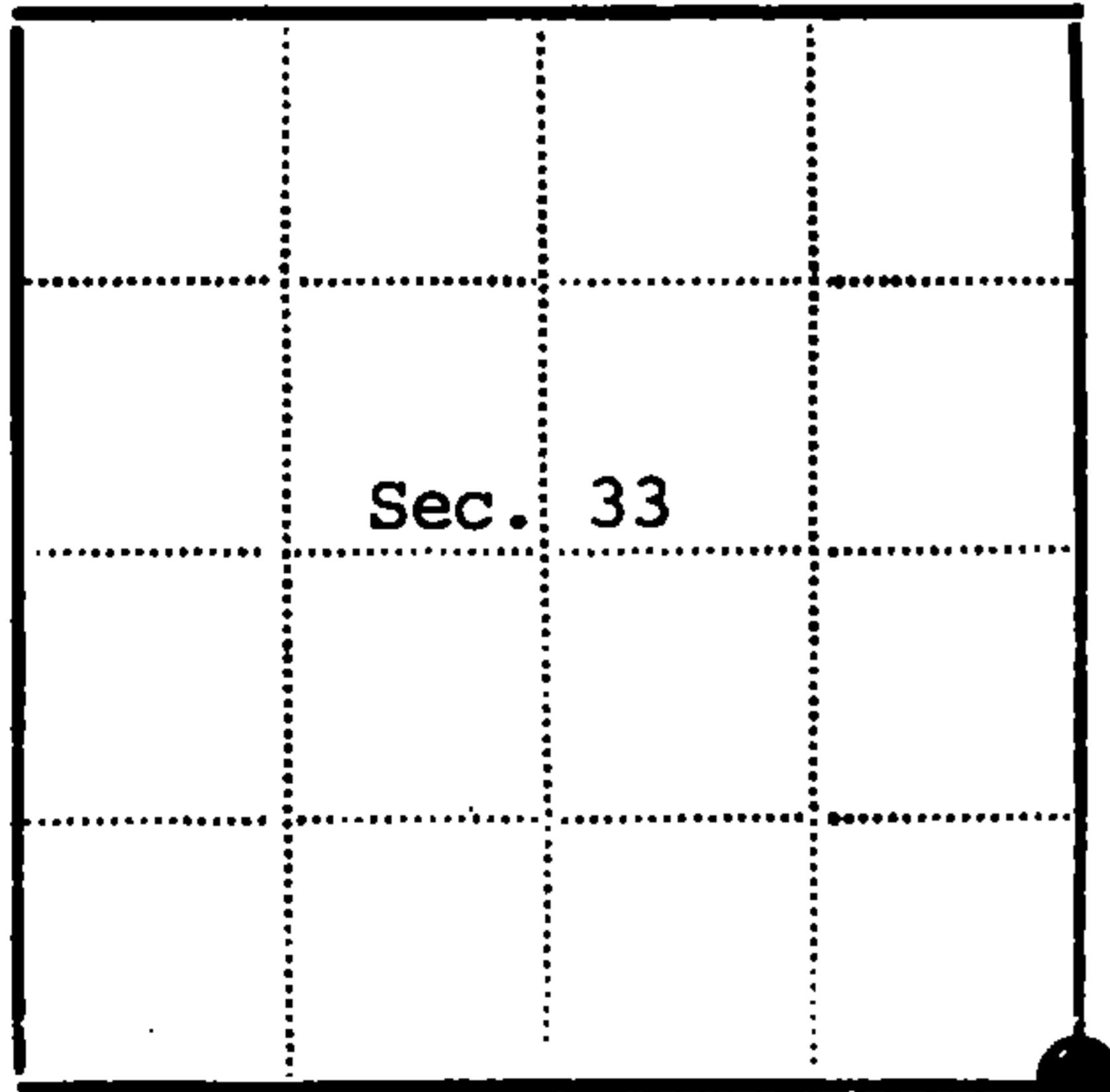
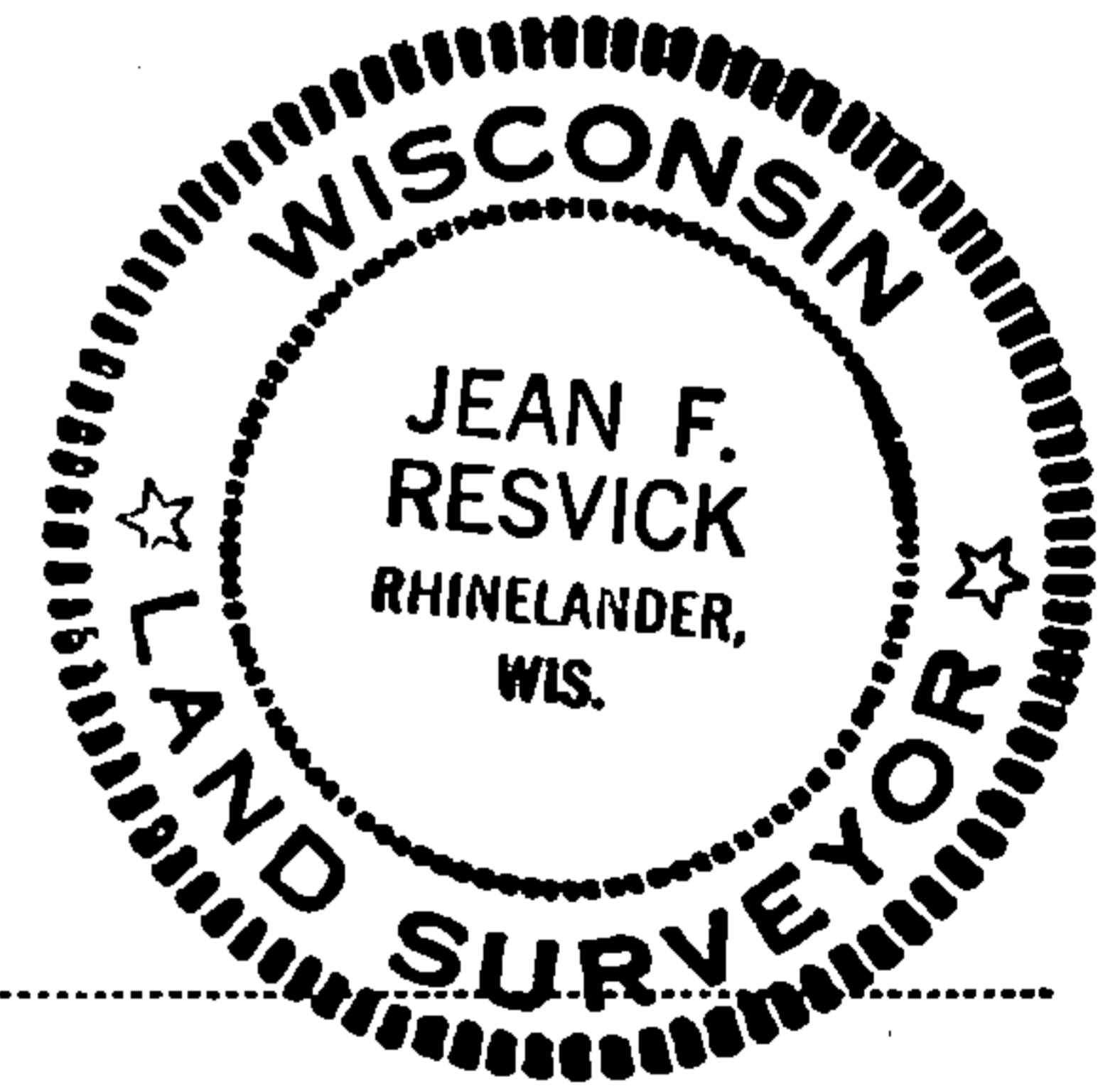
Monument set in 1962 bent over and brass cap removed. Hemlock stump found in 1962 with scribing, now down and only pieces Bearing tree set in 1962 in good shape although specie and distance did not agree.

Description of monument and accessories I established to perpetuate the location of this corner:

Replace bent monument with 2 inch diameter aluminum pipe monument, 3 feet long with cast aluminum base and aluminum cap stamped: T34N, R14E, S33, S34, S4, S3, T33N, 1976, S-802.

Placed nails in bearing trees being the same as scribed in 1962

Yellow Birch 8, N16E, 75.00 ft. Elm 10, S47E, 21.65 ft. Sugar 15, S63W, 39.30 ft. Elm 17, N52W, 55.80 ft. Monument set almost flush with ground. Set steel sign post NW of monument.



● - Corner monument restored
□ -

Resident witnesses.....

Dated at Rhinelander Wisconsin, this 15 day of June 1976.

Signature Jean F. Resvick Title Land Surveyor
(County Surveyor, Registered Land Surveyor, or other duly authorized official)

Surveyors Registration No. S-802 DOCUMENT NUMBER 109577

Office of Register of Deeds County of Forest

I hereby certify that the within instrument was filed in this office for record on the 2nd day of July 1976, and was filed in Book No. of County Records.

Signature Eugene Stutz Title Register of Deeds

Township 34 North Range 14 East Section 33 Under No. Z-13 Page No.

U. S. PUBLIC LAND SURVEY MONUMENT RECORD

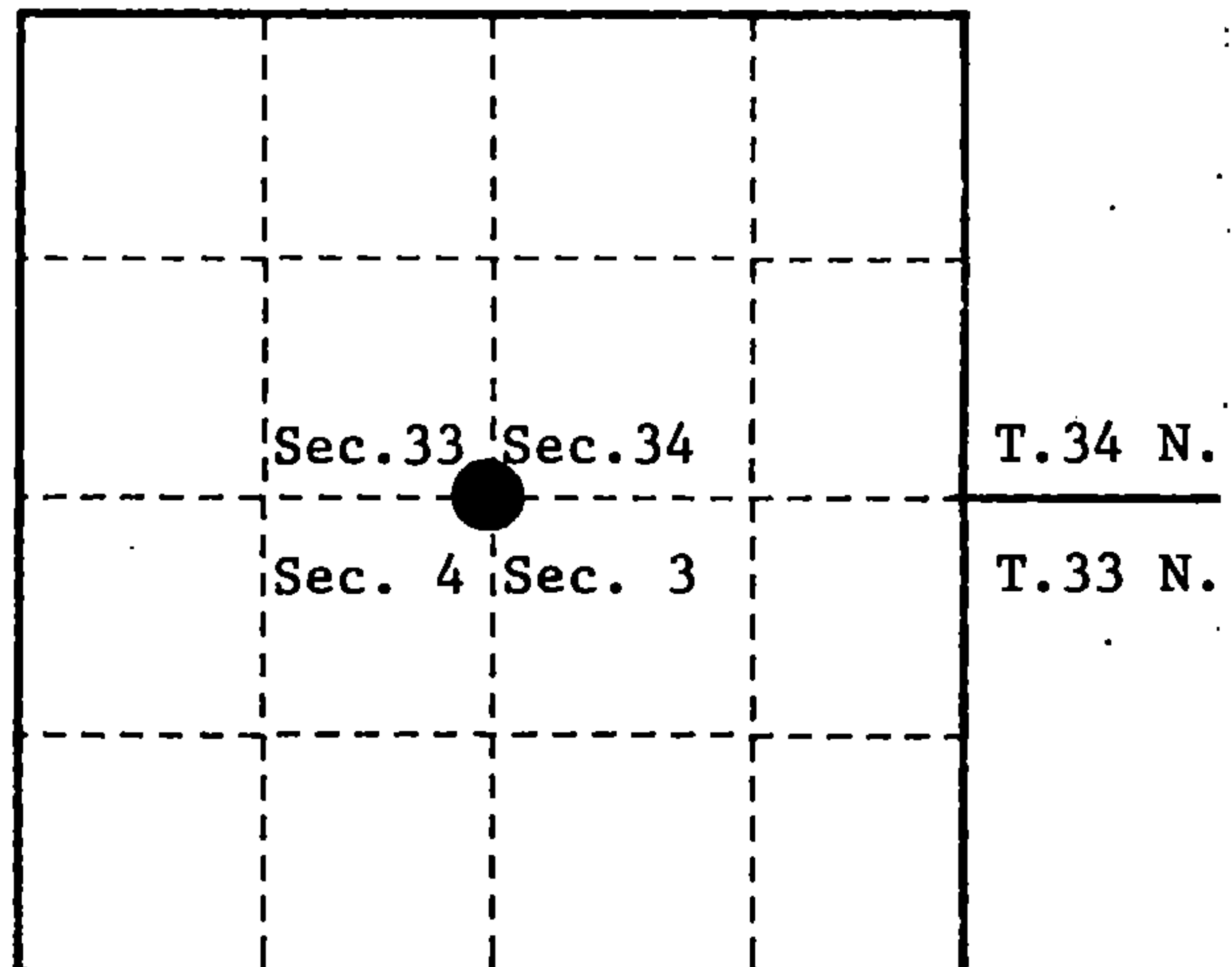
INSTRUCTIONS:

This record shall show the location of the corner and shall include all of the following nine elements (a through i).

- (a) Identify the corner by reference to the U.S. public land survey system.
○ = Corner monument restored.

Section Corner to Sections 3, 4, 33 and 34, T.33-34N., R.14E., Langlade County, WI., Forest County, WI.

State Plane Coordinates
Wisconsin North Zone
79793.57089-N
2292334.45408-E
Geographic Coordinates
45-22-42.40449-N
088-44-23.34075-W



- (b) Describe any record evidence, monument evidence, occupational evidence, testimonial evidence or any other material evidence you considered, and whether the monument was found or placed.

Original survey in 1857 by Alfred Millard. Set wood post and the following bearing trees; Linn, 12", S.49°W., 37 links, Sugar, 24", N.50°W., 42 links, Yellow Birch, 40", S.45°E., 30 links, Hemlock, 10", N.25°E., 48 links.

In 1962, Victor Hedman, R.L.S., found a 2" diameter iron pipe and the original Hemlock stump, scribed N.25°E., 32 feet. Replaced iron pipe with a 2" x 60" galvanized iron pipe with a brass cap stamped to identify corner. Blazed and scribed new bearing trees; Yellow Birch, 5", N.15°E., 74.58 feet, Elm, 7", S.47°E., 21.78 feet, Sugar, 12", S.63°W., 39.60 feet, Sugar, 14", N.52°W., 55.77 feet, center-line of road, West, 14 feet.

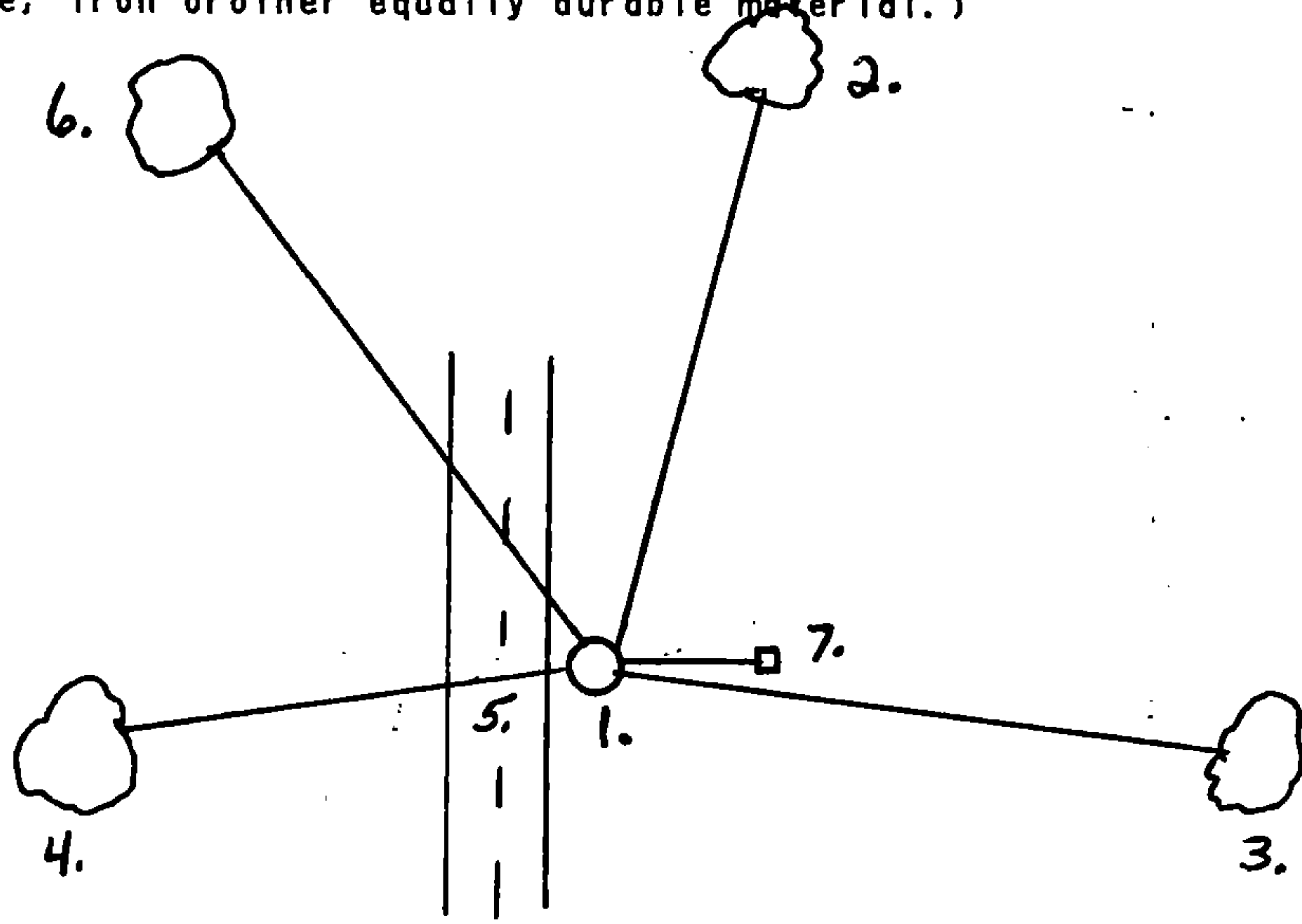
In 1976 Jean Resvick, R.L.S., found monument damage and replaced it with a 2" x 36" aluminum monument. Placed nails in 1962 bearing trees for the following new measurements; Yellow Birch, 8", N.16°E., 75.00 feet, Elm, 10", S.47°E., 21.65 feet, Sugar, 15", S.63°W., 39.30 feet, Elm, 17", N.52°W., 55.80 feet.

On September 29 1983, Alan Harrison, R.L.S., found monument and bearing trees as noted in 1962 and 1976. Elm bearing trees are dead. Made 2 new bearing trees; White Ash, 9", S.81°E., 83.82 feet, Sugar, 8", N.49°W., 75.25 feet, Steel Sign Post, East, 6.3 feet.

- (c) In the plan view drawing below, provide reference ties to at least 4 witness monuments, or, if the location is within a municipality, to at least 2 witness monuments. (witness monuments shall be made of concrete, natural stone, iron or other equally durable material.)

- (d) Show a plan view drawing depicting the relevant monuments and reference ties which is sufficient in detail to enable accurate relocation of the corner monument if the corner monument is disturbed. Indicate north.

1. 2" x 36" aluminum monument with tablet stamped to identify corner.
2. Yellow Birch, 9", N.16°E., 75.00 feet.
3. White Ash, 9", S.81°E., 83.82 feet.
4. Sugar, 17", S.63°W., 39.30 feet.
5. Center-line of road, West, 14 feet.
6. Sugar, 9", N.49°W., 75.25 feet.
7. Steel Sign Post, East, 6.3 feet.



F.R. #2126

A-13

(e) Describe any material discrepancy between the location of the corner as restored or reestablished and the location of that corner as previously restored or reestablished by distance and direction. Show the discrepancy on the plan view drawing under (d). above. Show the distances between the corner as previously restored or reestablished and (1) the corner as restored or reestablished, and (2) to at least 2 of the witness monuments shown on the drawing in (d), above.

None

(f) Was the corner restored through acceptance of (1) an obliterated evidence location, or, (2) a found perpetuated location?

(2)

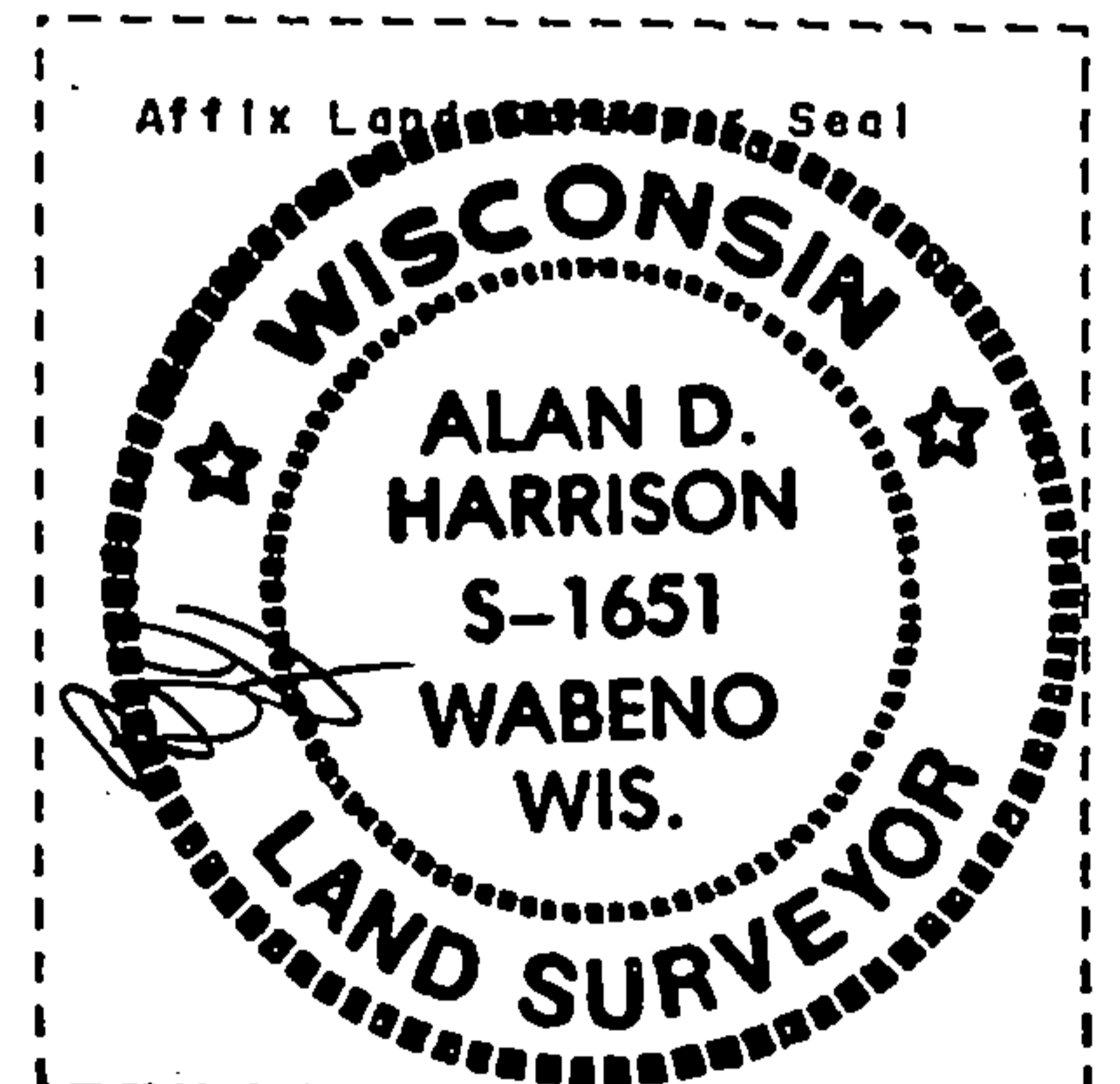
(g & h) Was the corner reestablished through lost corner proportionate methods? If so, show the method, including the directions and distances to other public land survey corners used as evidence or used for proportioning in determining the corner location?

No

REGISTER'S OFFICE
Forest County, Wis.

Received for record this 23rd day
of November A.D., 1994 at
9:00 o'clock A.M. and recorded
in Vol. Case Restoration
page 3-14-A-13

Paul Clibo
Deputy
Register of Deeds



(1) I, Alan D. Harrison

(type or print name) certify that the corner location shown on this record was determined by me or under my direction and control and that this U.S. Public Land Survey Monument Record is correct and complete to the best of my knowledge and belief.

Alan D. Harrison 10/26/94
Signature Date

CERTIFICATE READY FOR FILING:

Sue Vap
District Ranger

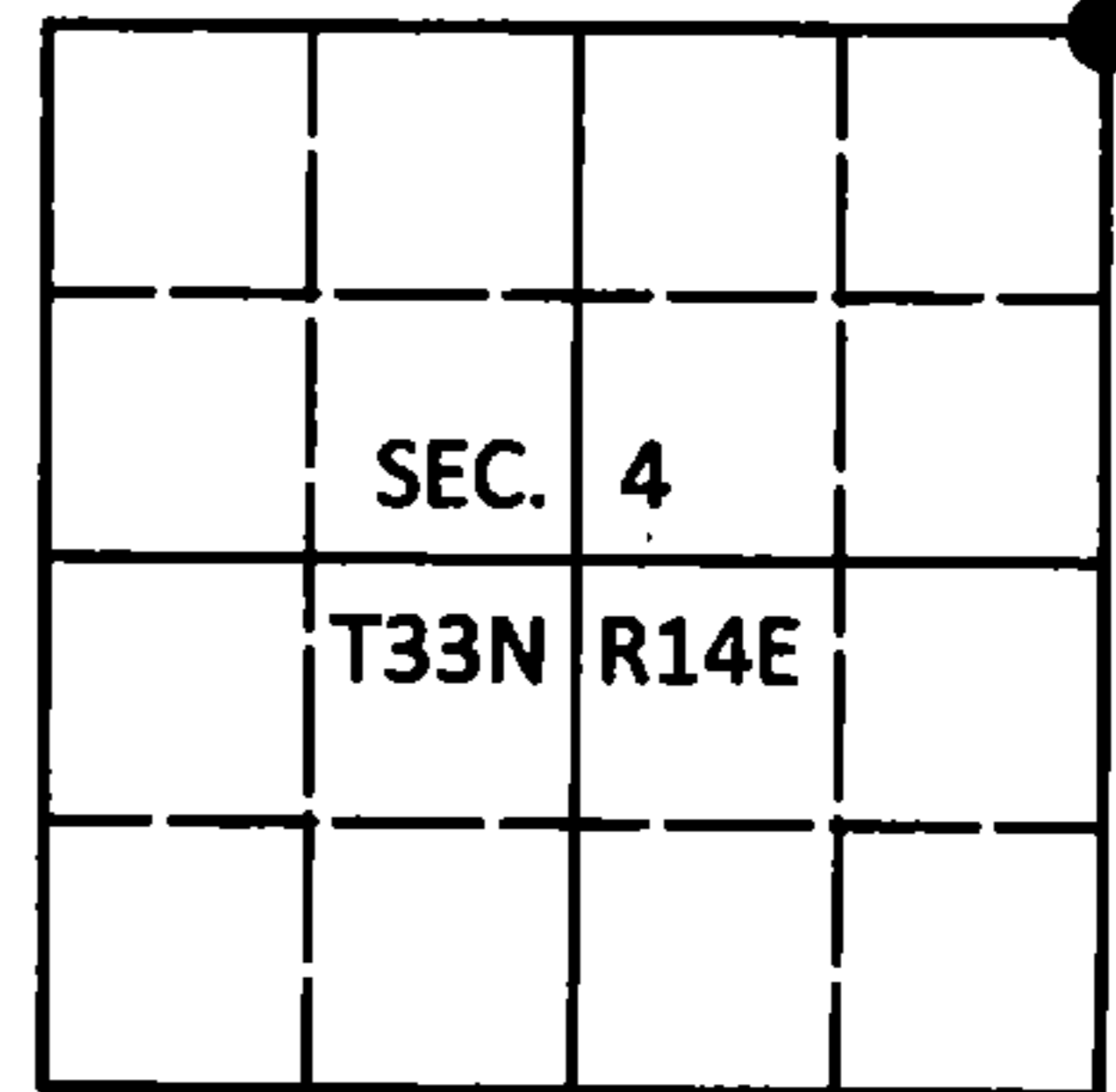
225166

U.S. PUBLIC LAND SURVEY MONUMENT RECORD

Note: This form is intended and designed to fulfill all requirements of Wisconsin Administrative Code, Chapter A-E 7.08 U.S. Public Land Survey Monument Record (3)(a-4).

(a) CORNER LOCATION
Cor. of Secs. 3, 4, 33 & 34
Township 33 & 34 North
Range 14 East of the 4th P.M.
Town of Wolf River/Freedom
County of Langlade/Forest

WISCRS - Langlade County
N: 427,299.09 USft
E: 726,431.53 USft
WISCRS - Forest County
N: 500,587.10 USft
E: 877,634.65 USft
Datum: NAD 83(2011)
GNSS Method: WISCRS STATIC



(b) HISTORY OF ORIGINAL CORNER ESTABLISHMENT

Original Surveyor: Alfred Millard

Original Accessories:

Date of Survey Commenced: August, 1857
Completed: August, 1857

Sugar 24" N50°W, 42 lks.
Hemlock 10" N25°E, 48 lks.
Lynn 12" S49°W, 37 lks.
Y. Birch 40" S45°E, 30 lks.

(b)(f)(g)(h) Description of monument found at this corner and if it was accepted, state all evidence (material, testimonial, occupational, plats, records, other monuments) used as a basis for accepting. If not accepted or if nothing was found, state evidence used as basis for establishing location. If re-established through lost corner proportionate methods, indicate all monuments, distances and directions used to establish. Indicate type of monument and sign post found or set.

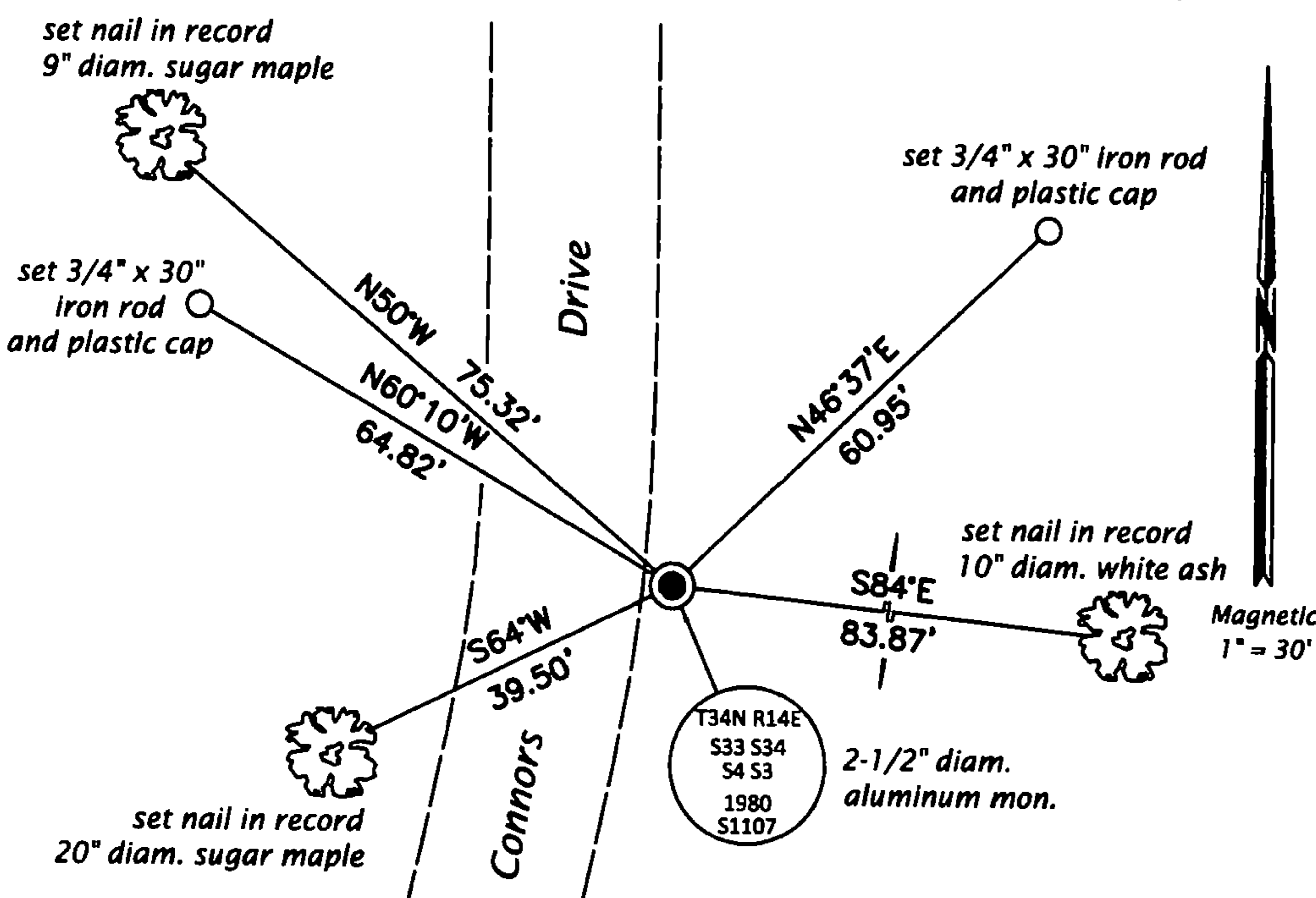
This is a perpetuation of a previous USPLS Monument Record by Victor H. Hedman, RLS dated October 18, 1962 and filed in the office of the Langlade County Surveyor. A complete history of the corner can be found on the previous monument record. I accept the previous location as a true and faithful perpetuation or reestablishment of the original corner location and further perpetuate it as follows.

This is a perpetuation of a previous USPLS Monument Record by Jean F. Resvick, RLS dated June 15, 1976 and filed in the office of the Langlade County Surveyor. A complete history of the corner can be found on the previous monument record. I accept the previous location as a true and faithful perpetuation or reestablishment of the original corner location and further perpetuate it as follows.

This is a perpetuation of a previous USPLS Monument Record by Alan D. Harrison, RLS dated October 26, 1994 and filed in the office of the Langlade County Surveyor. A complete history of the corner can be found on the previous monument record. I accept the previous location as a true and faithful perpetuation or reestablishment of the original corner location and further perpetuate it as follows.

November 4, 2016: I found and accepted the record monument, a 2-1/2" diam. aluminum pipe with a 3-1/4" diam. aluminum cap 24" beneath the ground surface. I set a 3/4" diam., 20" long rebar over the aluminum cap. The record y. birch at N16°E is now a stump. A power pole bears S53°E, 5 ft. I found or established accessories as shown below. A USFS steel sign post bears East, 7.0 ft. I set a white vinyl sign post bearing East, 1.0 ft.

(c)(d)(e) Plan view of corner with ties to at least 4 witness monuments. If in disagreement with previously established corner, show the distances between the two corners and also indicate the ties to the disputed.



FOREST COUNTY, WI
CORTNEY BRITTEN CLEEREMAN
REGISTER OF DEEDS
RECEIVED FOR RECORD

APR 27 2018

Time: 10:00 A.M.
Vol.: Corner Restoration
Page Number: 2-13



(I) I, Jeffrey W. Austin, Professional Land Surveyor No. S-1885, hereby certify that the corner location on this record was determined by me or under my direction and control and that this U.S. Public Land Survey Monument Record is correct and complete to the best of my knowledge and belief.

Handwritten signature of Jeffrey W. Austin.

MAY 4, 2017
Date