

CERTIFIED LAND CORNER RESTORATION

Index No. Y-20

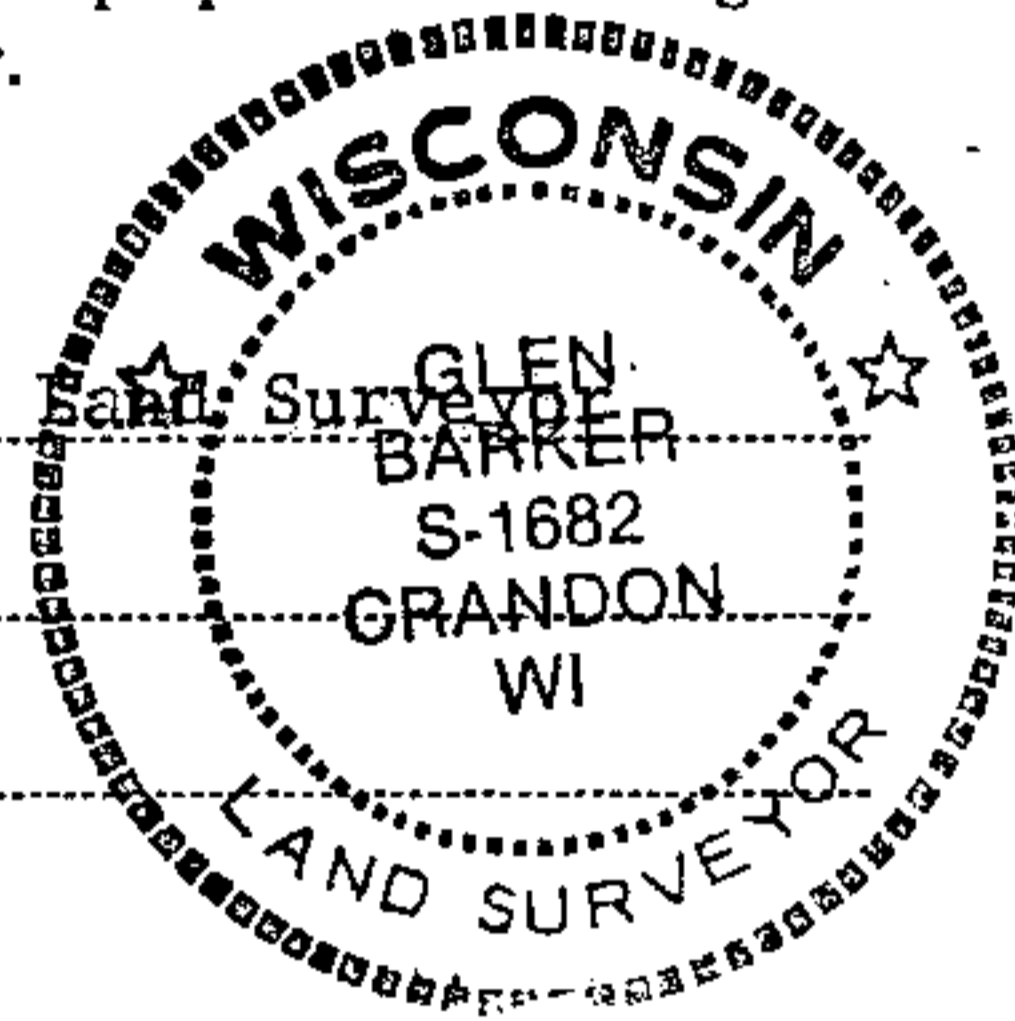
State of Wisconsin }  
County of Forest } ss.

I Glen Barker, do hereby certify that on the 12th day of August, 19 82, I ~~found~~ established ~~existence of the~~ SE 1/16 corner of Section 35 Township 34, North, Range 13 East, Fourth Principal Meridian, as described hereon; and that from this evidence I established a new monument and accessories as described hereon to perpetuate the original location of this corner.

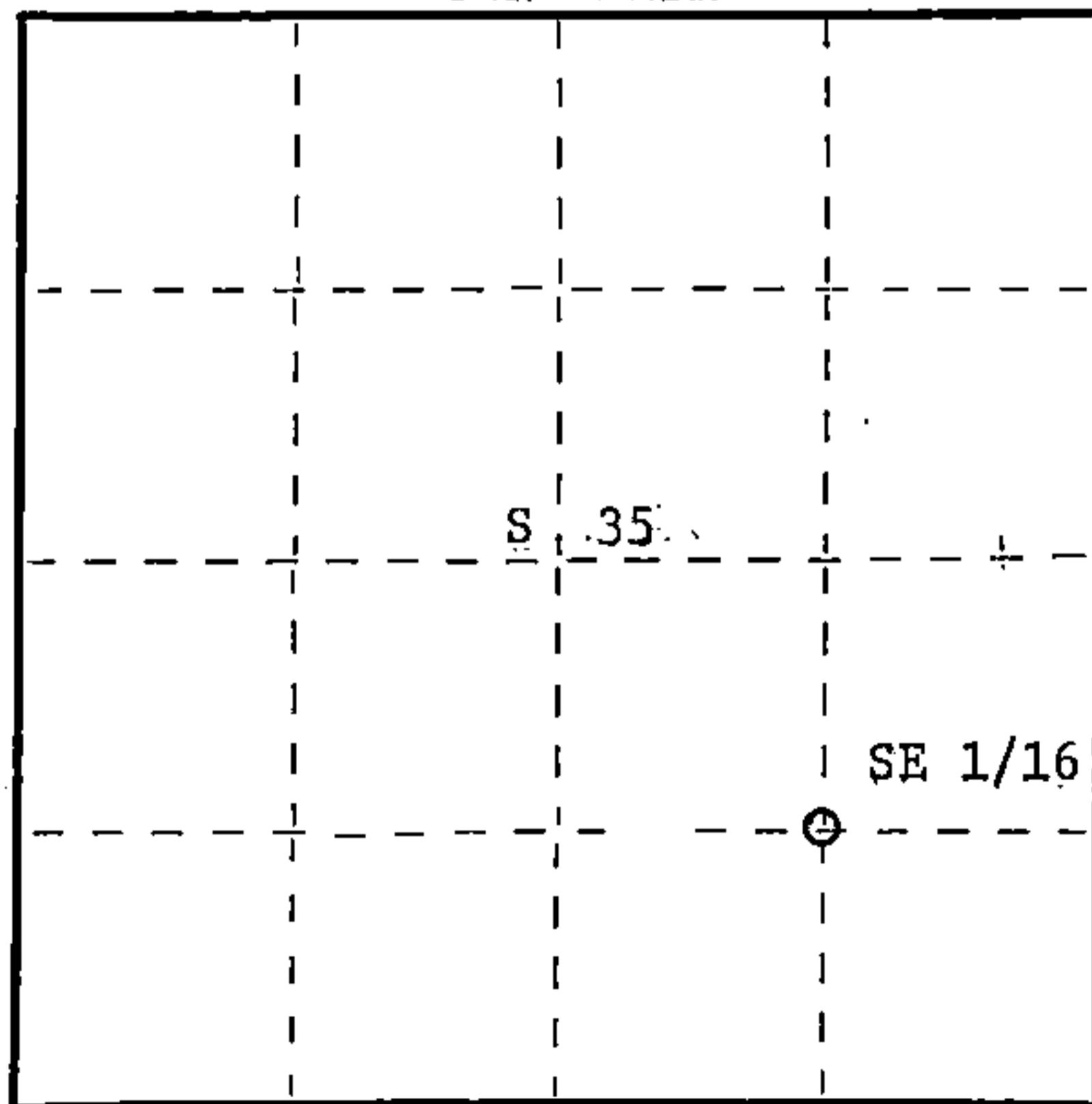
Resident witnesses:

J. Claflin, Reg.

H. Wagoner



T34N R13E



○ = Corner monument restored.

History of original corner establishment:  
No evidence of any previous corner.

Description of corner evidence found:

Corner established by subdivision of the SE 1/4.  
Location of SE 1/16 is N88-51-49E 1322.70 feet of SC 1/16 and S 0-13-42 E 1380.99 feet of E 1/16 between sections 2 & 35 T33 & 34N R13E.

Description of monument and accessories I established to perpetuate the original location of this corner.

Set a 1" iron pipe with 2" diameter alloy cap, stamped:  
Monument projects 12" above ground.  
Marked NBT's:

Black Spruce 12" N1°E 18.12 feet  
Black Spruce 12" S78E 26.40 feet  
scribed 1/16 - B.T.

S1682  
T34N R13E  
SE 1/16 S+35  
CPI - 1982

Dated at Rhineland, Wis., this 19th day of April, 19 83.

Signature Glen Barker Title Registered Land Surveyor Registration No. S-1682  
(County Surveyor, Registered Land Surveyor, or other duly authorized official)

Office of Register of Deeds, County of Forest, I hereby certify that the within instrument was filed in this office for record on the 19th day of May, 19 83 at 3:00 o'clock P. M.

Eugene Stetson  
(Register of Deeds)  
By \_\_\_\_\_ Deputy

DOCUMENT NO.  
**123428**

Stock No. 26272  
FORM 985  
H.C. Miller Company

43413351010

CERTIFIED LAND CORNER RESTORATION

Index No. **Y-20**

State of Wisconsin }  
County of Forest } ss.

History of original corner establishment:  
No evidence of any previous corner.

I Glen Barker, do hereby  
certify that on the 12th day  
of December, 19 82, I ~~found~~  
evidence of the SE 1/16  
corner of Section 35  
Township 34, North, Range  
13 East, Fourth Principal Meridian,  
as described hereon; and that from this evidence  
I established a new monument and accessories  
as described hereon to perpetuate the original  
location of this corner.

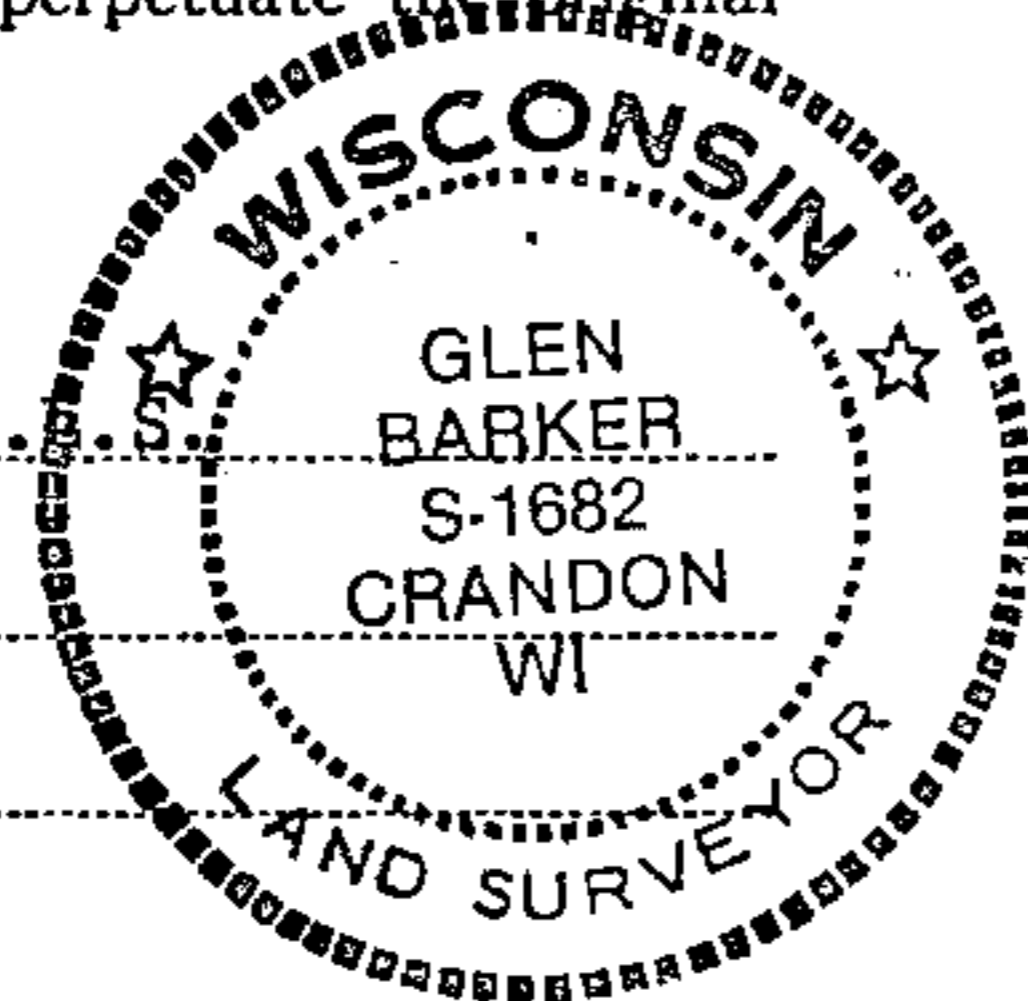
Description of corner evidence found:

Corner established by subdivision of the SE 1/4.  
Location of the SE 1/16 is 1322.70 ft. of S1/16 and 1380.99 ft. of E1/16 between  
sections 2 & 35, T33 & 34N R13E.

Resident witnesses:

J. Claflin R. S.

H. Wagoner



Description of monument and accessories I established to perpetuate the original location of this corner.  
Set a 1" iron pipe 2" diameter alloy cap stamped:  
Monument projects 18" above ground.

Marked NBTs

Black spruce 12" N1°E 18.12 ft.

Black spruce 12" S78E 26.40 ft.

Scribed 1/16 - B.T.

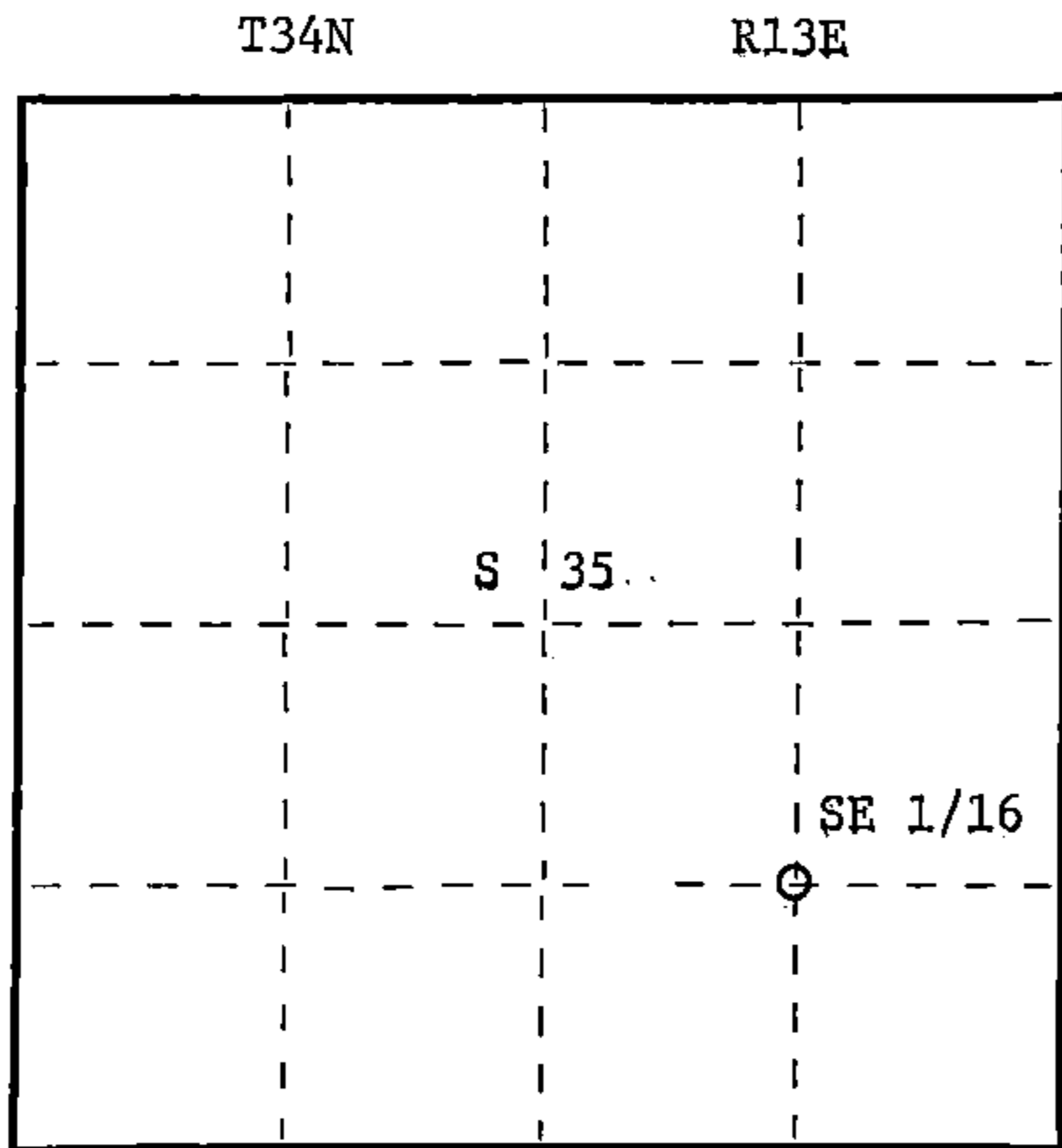
S1682

T34N R13E

S 35

SE1/16

CPI - 1983



○ = Corner monument restored.

Dated at Rhineland, Wis., this 6th day of May, 19 83.

Signature Glen Barker Title Registered Land Surveyor Registration No. S1682  
(County Surveyor, Registered Land Surveyor, or other duly authorized official)

Office of Register of Deeds, County of Forest, I hereby certify that the within  
instrument was filed in this office for record on the 19th day of May, 19 83  
at 3:00 o'clock P. M.

Eugene Stutzman  
(Register of Deeds)

By \_\_\_\_\_ Deputy

DOCUMENT NO.  
**123427**

Stock No. 26272

HCMiller Company

FORM 985

43413351010