

CERTIFIED LAND CORNER RESTORATION

Index No. 20-19

W14

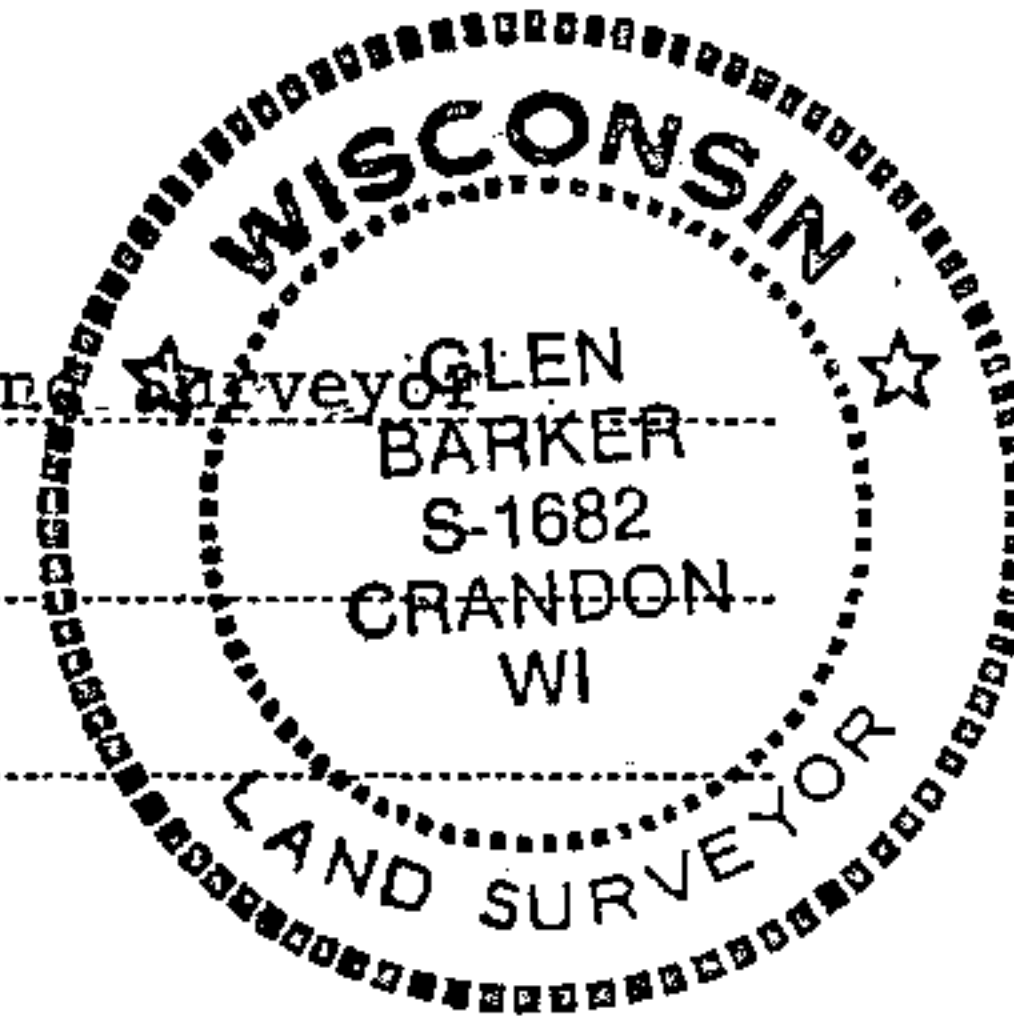
State of Wisconsin }
County of Forest } ss.

I Glen Barker, do hereby certify that on the 28th day of December, 19 82, I ~~found~~ established ~~existence of the~~ NW 1/16 corner of Section 34 Township 34 North, Range 13 East, Fourth Principal Meridian, as described hereon; and that from this evidence I established a new monument and accessories as described hereon to perpetuate the original location of this corner.

Resident witnesses:

J. Claflin, Reg. Land Surveyor

H. Wagoner



History of original corner establishment:

No evidence of any previous corner.

Description of corner evidence found:

Corner established by subdivision of the NW 1/16 is N 0-44-30 W 1317.59 feet of WC 1/16 and S 88-26-44 W 1312.84 feet of NC 1/16.

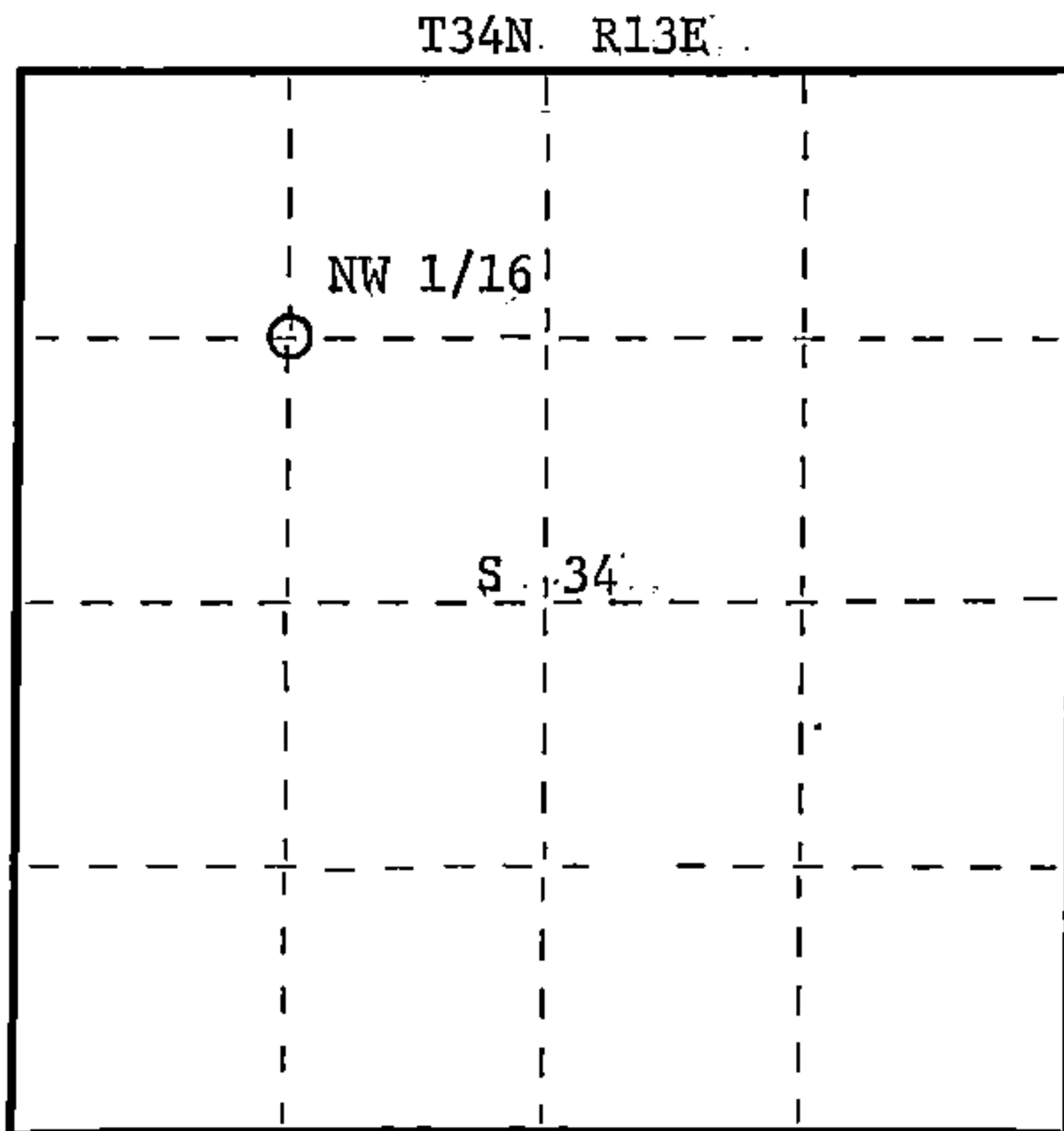
Description of monument and accessories I established to perpetuate the original location of this corner.

Set a 1" iron pipe with 2" diameter alloy cap, stamped: Monument projects 12" above ground. Marked NBT's:

Cedar 6" S35°E 15.06 feet
Cedar 7" N5°W 28.90 feet
scribed 1/16 B.T.

S1682
T34N R13E
NW 1/16 S 34
CPI - 1982

Stock No. 26272
FORM 983



○ = Corner monument restored.

Dated at Rhinelander, Wis., this 18th day of March, 19 83.

Signature: *Glen Barker* Title: Registered Land Surveyor Registration No. S-1682
(County Surveyor, Registered Land Surveyor, or other duly authorized official)

Office of Register of Deeds, County of Forest, I hereby certify that the within instrument was filed in this office for record on the 7th day of April, 19 83 at 9:30 o'clock A. M.

Eugene Statelyny
(Register of Deeds)
By _____ Deputy

DOCUMENT NO. 123155

43413343030