

CERTIFIED LAND CORNER RESTORATION

Index No. 11-15

W15

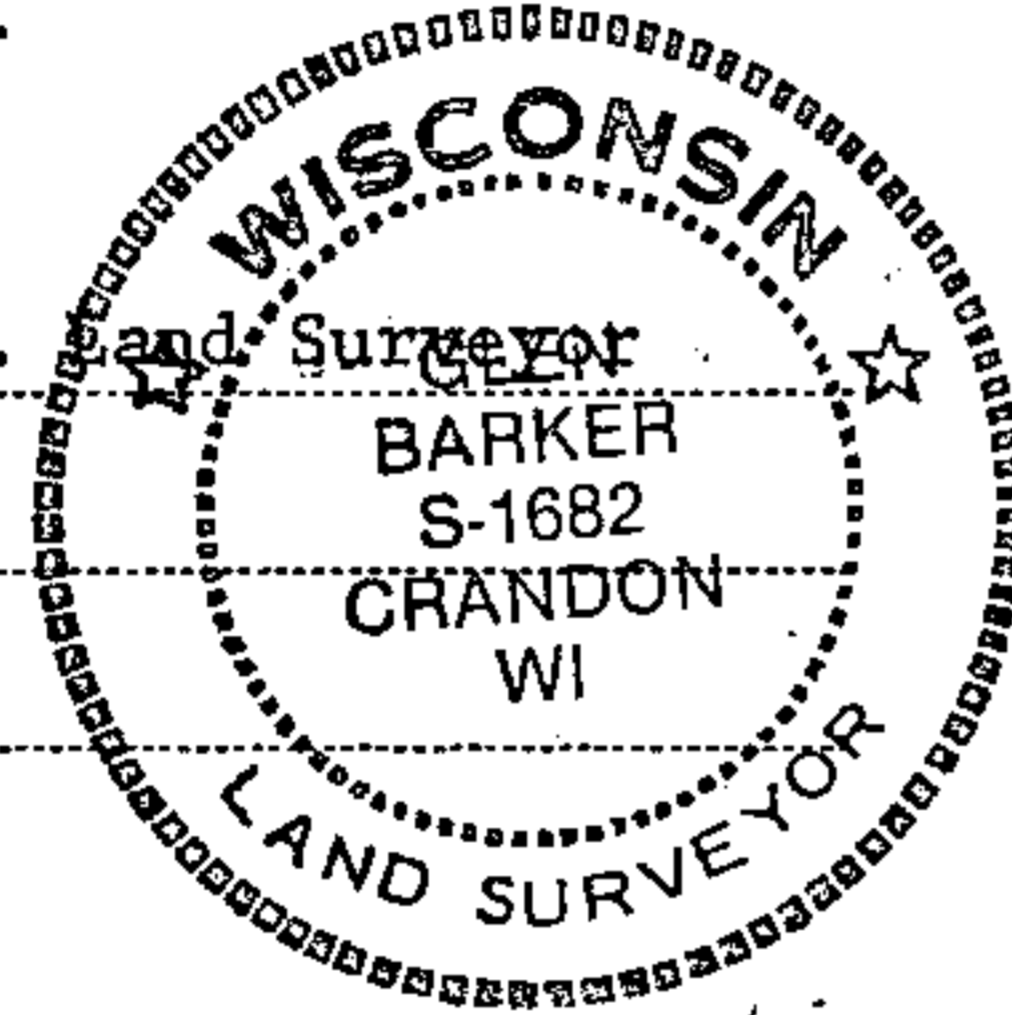
State of Wisconsin }  
County of Forest } ss.

I Glen Barker, do hereby certify that on the 27th day of December, 19 82, I found established ~~corner of the~~ NC 1/16 corner of Section 34 Township 34, North, Range 13 East, Fourth Principal Meridian, as described hereon; and that from this evidence I established a new monument and accessories as described hereon to perpetuate the original location of this corner.

Resident witnesses:

J. Claflin, Reg.

H. Wagoner



History of original corner establishment:

No evidence of any previous corner.

Description of corner evidence found:

Total distance from 1/4 corner between sections 27 - 34 to C 1/4 section 34 is 2635.92 feet at bearing S 0-52-55 E.  
Set NC 1/16 1317.96 feet intermediate.

Description of monument and accessories I established to perpetuate the original location of this corner.

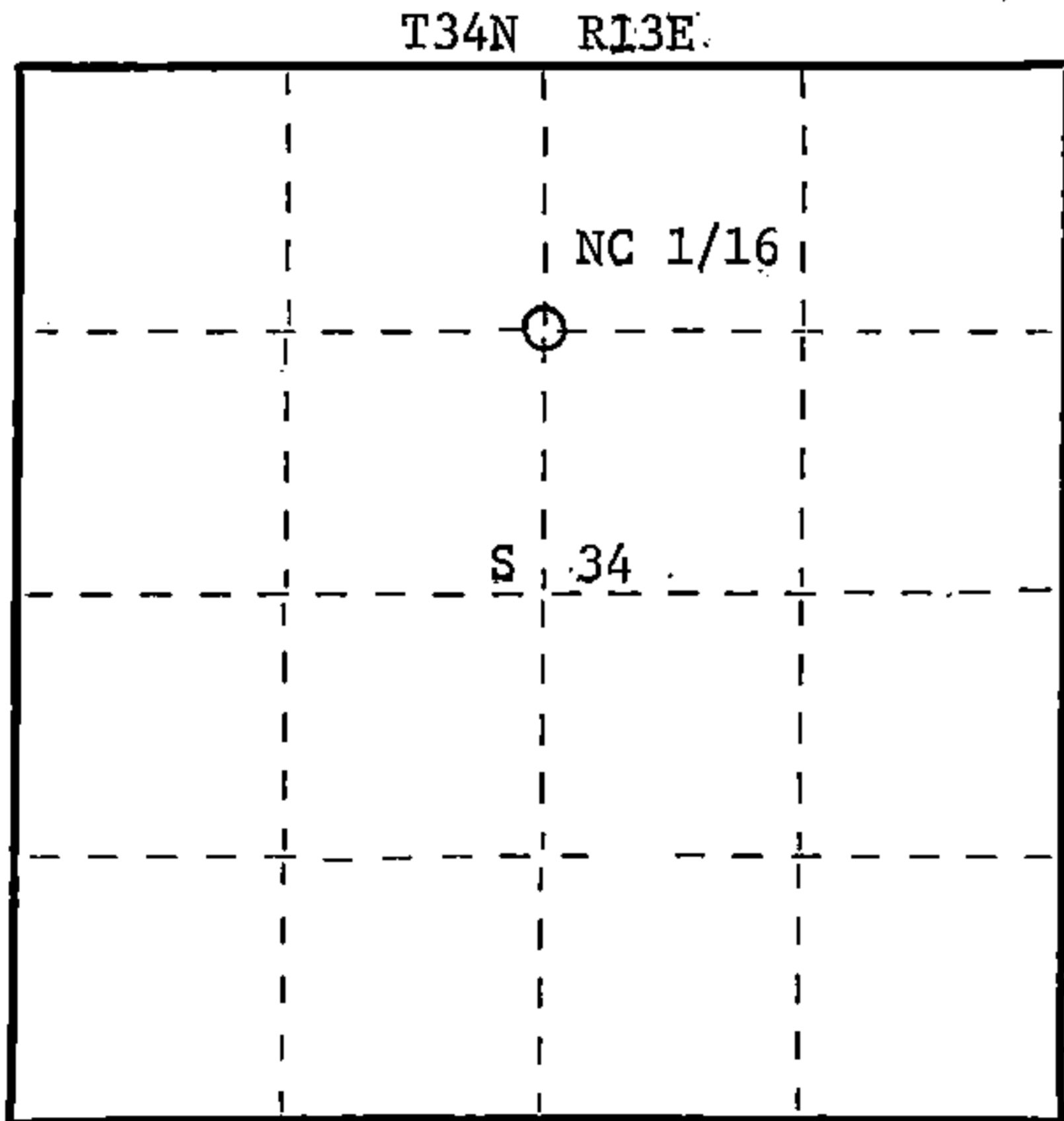
Set a 1" iron pipe with 2" diameter alloy cap, stamped:  
Monument projects 12" above ground.  
Marked NBT:

Cedar 7" N55E 3.40 feet  
Cedar 7" S47E 22.15 feet  
scribed 1/16 B.T.

S1682  
T34N R13E  
NC 1/16 S+34  
CPI - 1982

Stock No. 26272

FORM 985



○ = Corner monument restored.

Dated at Rhineland, Wis., this 18th day of March, 19 83.

Signature Glen Barker Title Registered Land Surveyor Registration No. S1682  
(County Surveyor, Registered Land Surveyor, or other duly authorized official)

Office of Register of Deeds, County of Forest, I hereby certify that the within instrument was filed in this office for record on the 7th day of April, 19 83 at 9:30 o'clock A. M.

Eugene Stetson  
(Register of Deeds)  
By.....Deputy

DOCUMENT NO. **123156**

43413343020