

CERTIFIED LAND CORNER RESTORATION

Index No. X-15

**X15**

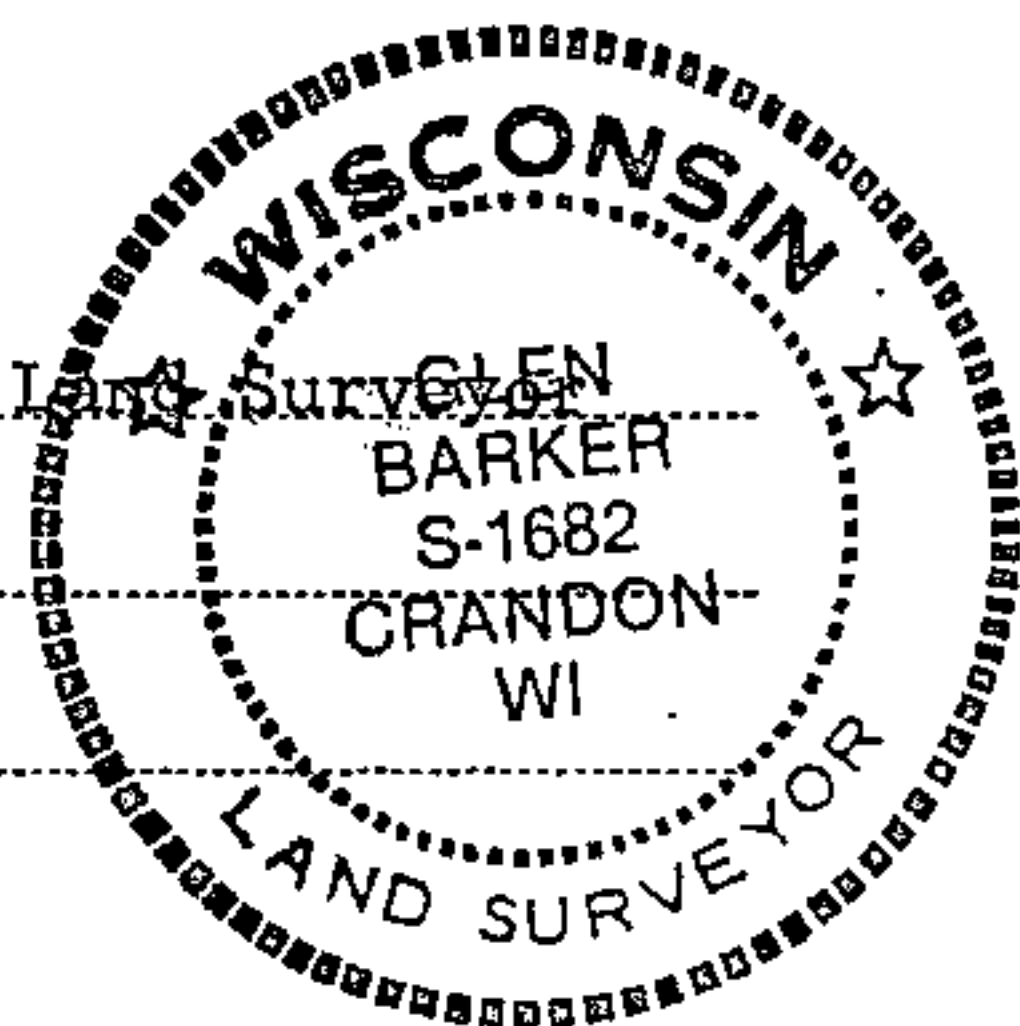
State of Wisconsin }  
County of Forest } ss.

I Glen Barker, do hereby certify that on the 29th day of December, 19 82, I ~~found~~ established ~~at the~~ C 1/4 corner of Section 34 Township 34, North, Range 13 East, Fourth Principal Meridian, as described hereon; and that from this evidence I established a new monument and accessories as described hereon to perpetuate the original location of this corner.

Resident witnesses:

H. Claflin, Reg. Land Surveyor

H. Wagoner



History of original corner establishment:

No evidence of any previous corner.

Description of corner evidence found:

Corner established by subdivision of section 34.  
C 1/4 corner sets S 0-52-55 E 2635.92 feet of N 1/4 corner  
S 88-27-47 W 2675.91 feet of E 1/4 corner  
N 0-52-55 W 2753.80 feet of S 1/4 corner  
N 88-27-47 E 2631.80 feet of W 1/4 corner

Description of monument and accessories I established to perpetuate the original location of this corner.

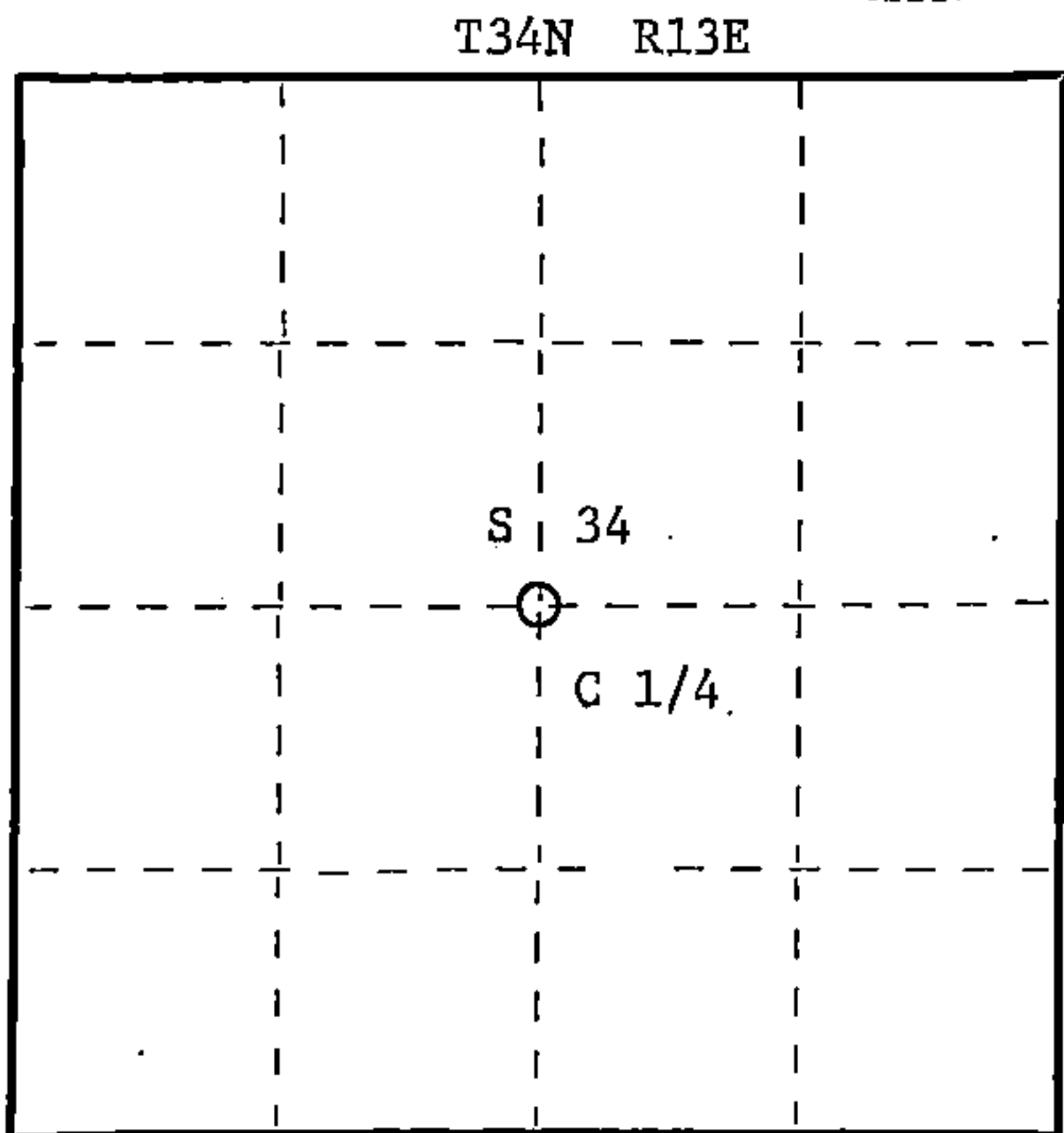
Set a 2-1/2" A-1 Federal Monument with alloy cap - stamped:  
Monument projects 8" above ground.

Marked NBT's:

Maple 6" S2° E 16.15 feet  
Black Spruce S50W 18.65 feet  
Black Spruce N10W 15.12 feet  
scribed C 1/4 B.T.

T34N R13E  
C 1/4 S 34  
S1682-1982

Stock No. 26272  
FORM 985



○ = Corner monument restored.

Dated at Rhineland, Wis., this 21st day of March, 19 83

Signature Glen Barker Title Registered Land Surveyor Registration No. S-1682  
(County Surveyor, Registered Land Surveyor, or other duly authorized official)

Office of Register of Deeds, County of Forest, I hereby certify that the within instrument was filed in this office for record on the 7th day of April, 19 83 at 9:30 o'clock A. M.

Eugene Stutzman  
(Register of Deeds)  
By.....Deputy

DOCUMENT NO. **123159**

43413342020