

CERTIFIED LAND CORNER RESTORATION

Index No. Z-10

Z10

State of Wisconsin }
County of Forest } ss.

History of original corner establishment:
No evidence of any previous corner.

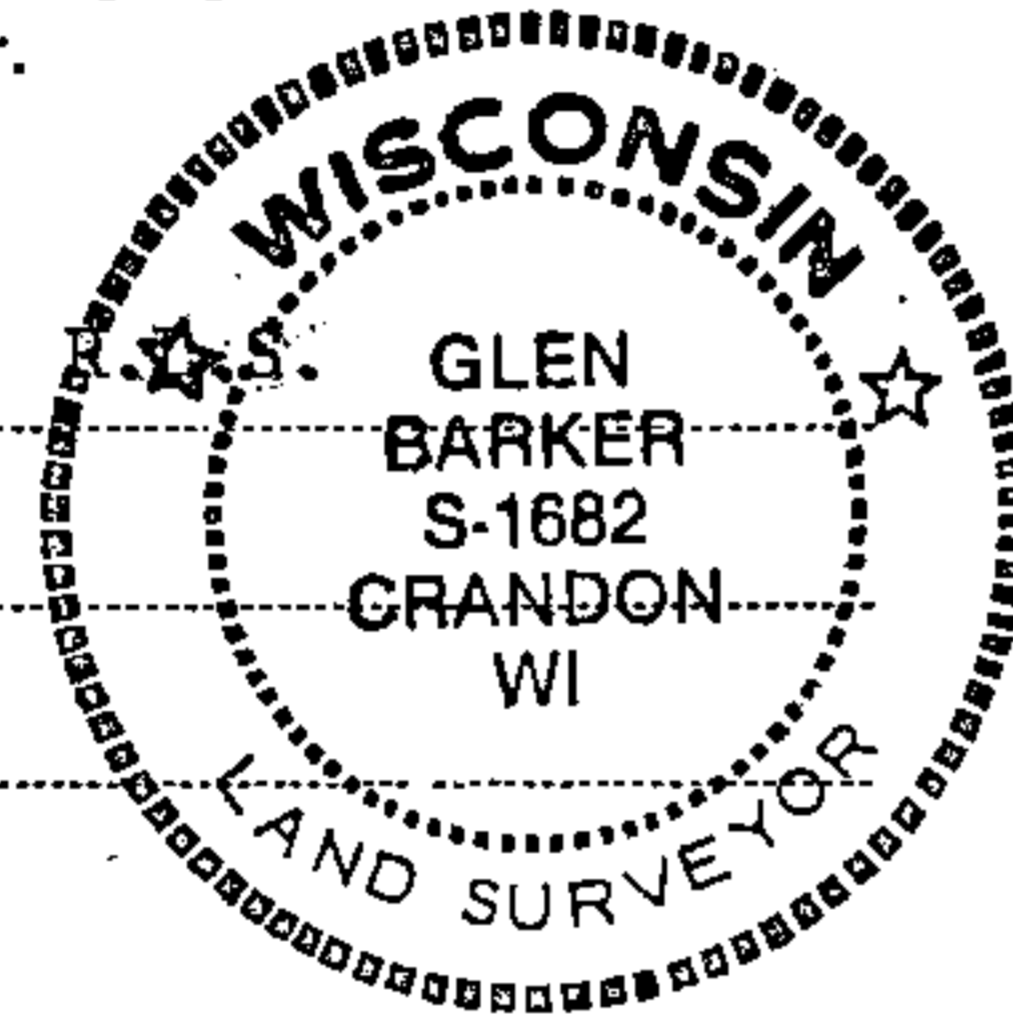
I Glen Barker, do hereby certify that on the 30th day of April, 1982, I ~~found~~ est. ~~existence of the~~ W 1/16 corner of Sections 4 & 33 Township 33 & 34, North, Range 13 East, Fourth Principal Meridian, as described hereon; and that from this evidence I established a new monument and accessories as described hereon to perpetuate the original location of this corner.

Description of corner evidence found:

Total distance from 1/4 corner between sections 4 & 33 T33 & 34N R13E to section corner 4-5-32-33 T33 & 34N R13E is 2633.43 ft. at bearing N89-54-25W.
Set W 1/16 1316.72 ft.

Resident witnesses:

James D. Claflin
Herb Wagoner



Description of monument and accessories I established to perpetuate the original location of this corner.

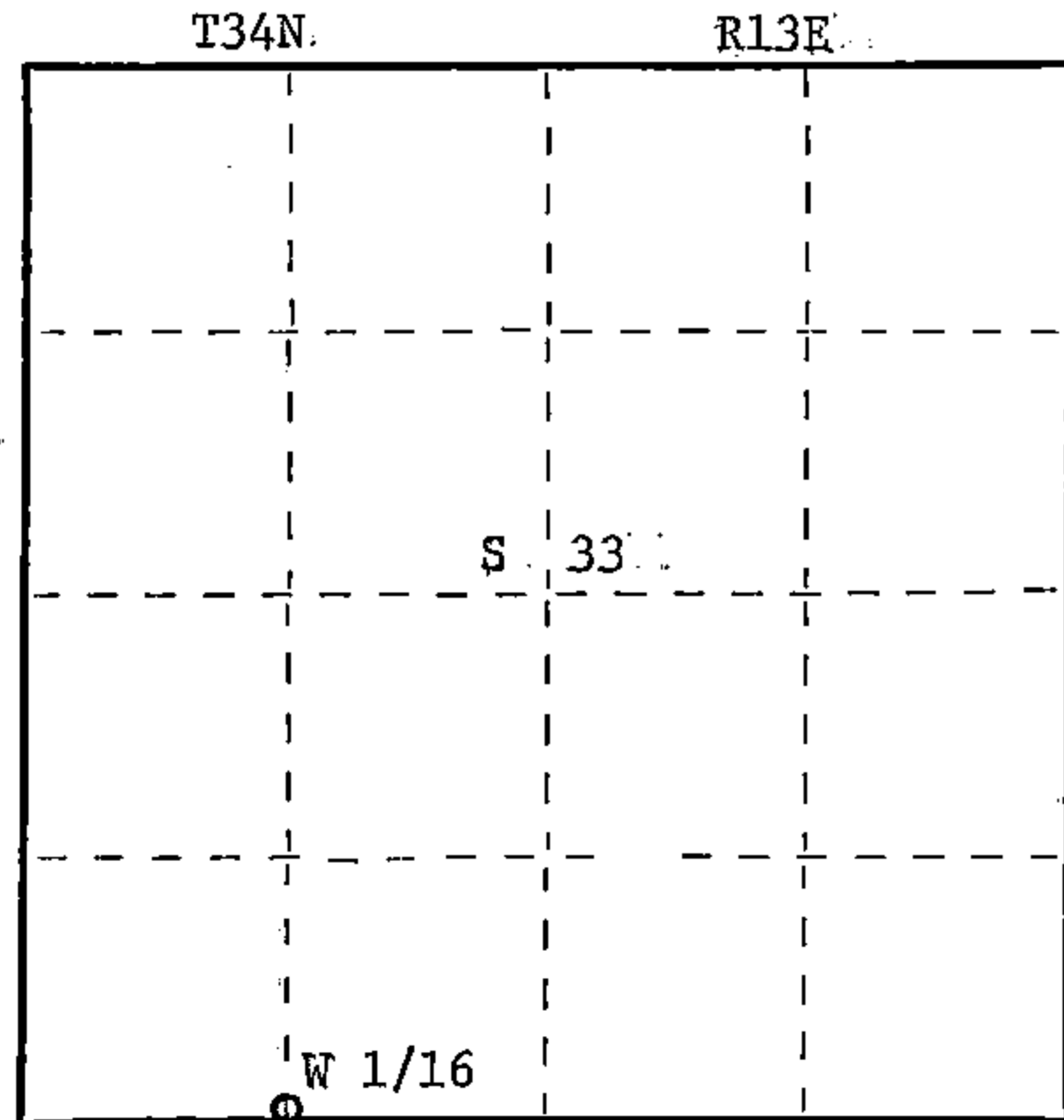
Set a 1" iron pipe with 2" diameter alloy cap stamped:

Monument projects 18" above ground.
Marked NBTs

Tamarack 5" N7°W 3.95 ft.
Black spruce 5" S31W 17.91 ft.
Scribed 1/16 - B.T.

S1682
T34N R13E
S 33
W 1/16 S 4
T33N R13E
CPI - 1982

FORM 985 H. C. MILLER CO., MILWAUKEE



○ = Corner monument restored.

Dated at Rhineland, Wis., this 18th day of May, 1982

Signature Glen Barker Title Registered Land Surveyor Registration No. S-1682
(County Surveyor, Registered Land Surveyor, or other duly authorized official)

Office of Register of Deeds, County of Forest, I hereby certify that the within instrument was filed in this office for record on the 15th day of June, 1982 at 10:00 o'clock A. M.

Eugene Staszny
(Register of Deeds)

By Sharon Mueller Deputy

DOCUMENT NO.
121691

43413330030