

CERTIFIED LAND CORNER RESTORATION

Index No. 010

State of Wisconsin }
Forest } ss.
County of

History of original corner establishment:
Cedar stake set by Kimberly Clark

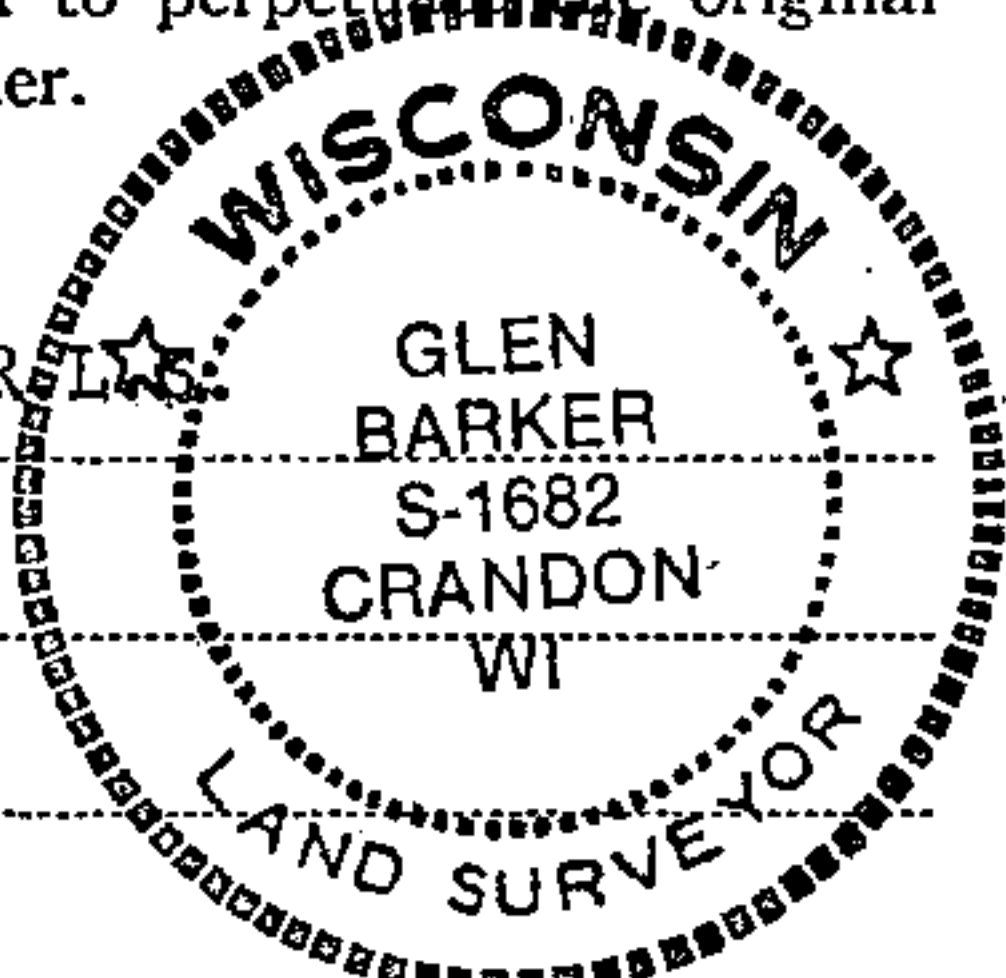
I, Glen Barker, do hereby
certify that on the 24th day
of May, 19 83, ~~found~~ Etab.
evidence of the NW 1/16
corner of Section 21
Township 34, North, Range
13 East, Fourth Principal Meridian,
as described hereon; and that from this evidence
I established a new monument and accessories
as described hereon to perpetuate the original
location of this corner.

Description of corner evidence found:
Corner established by subdivision of the NW 1/4. NW 1/16 sets 1319.63 ft. of NC 1/16
and 1313.77 ft. of WC 1/16.

Resident witnesses:

J. Claflin - R

H. Wagoner

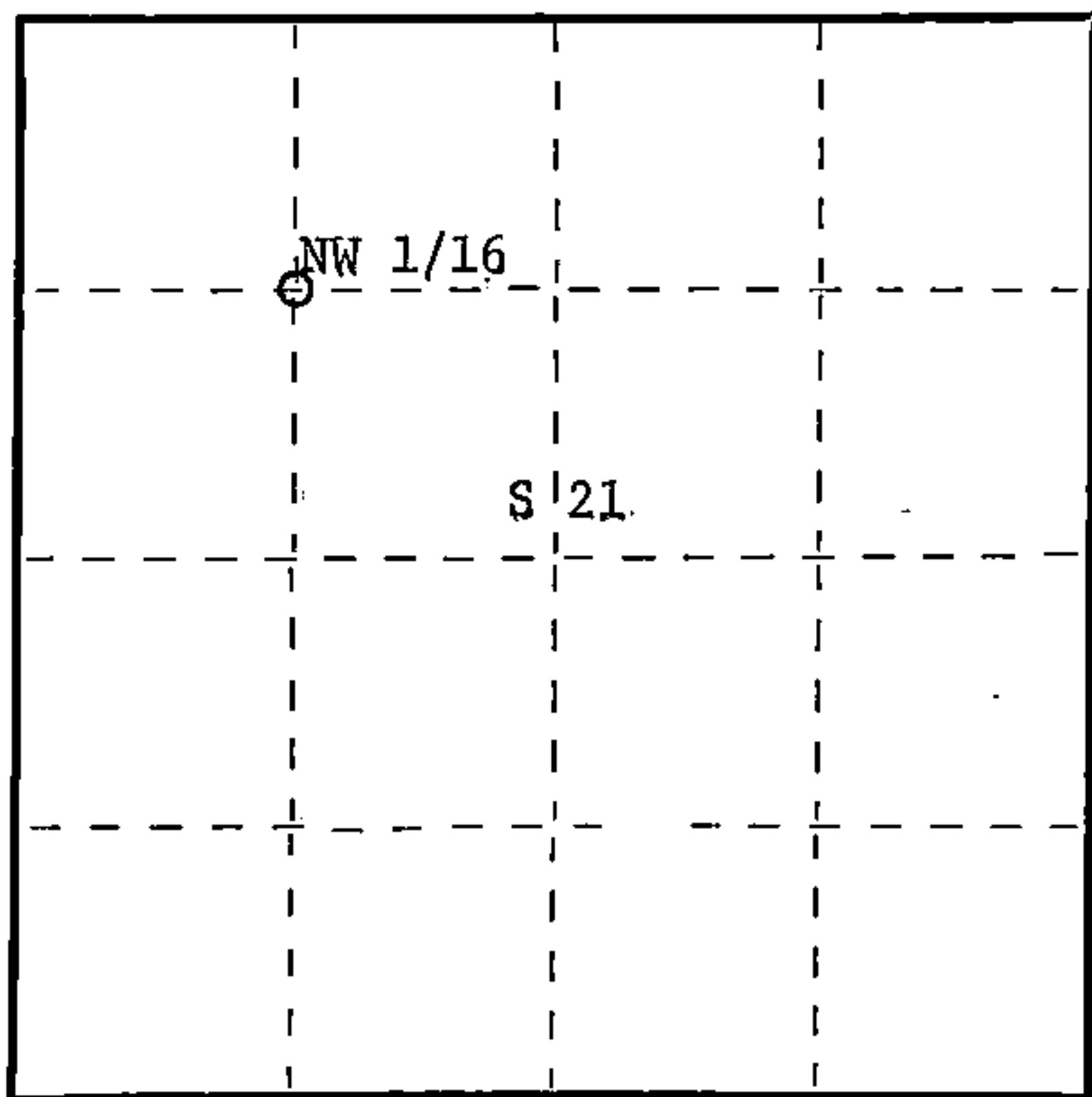


Description of monument and accessories I established to perpetuate the original location of this corner.

Set a 1" iron pipe with 2" diameter alloy cap stamped: S1682
T34N R13E
Monument projects 18" above ground S 21
Marked NBTs: NW 1/16
CPI - 1983
Sugar 10" S81W 75.22 ft.
Sugar 8" N15E 54.02 ft.
Scribed 1/16 - B.T.

Stock No. 26272
FORM 985
H.C. Miller Company
Surveyors, Wisconsin

T34N R13E



○ = Corner monument restored.

Dated at Rhineland, Wis., this 9th day of June, 19 83.

Signature Glen Barker Title Registered Land Surveyor Registration No. S1682
(County Surveyor, Registered Land Surveyor, or other duly authorized official)

Office of Register of Deeds, County of Forest, I hereby certify that the within
instrument was filed in this office for record on the 15th day of June, 19 83.
at 2:00 o'clock P. M.

Eugene Steatny
(Register of Deeds)
By..... Deputy

DOCUMENT NO. **123601**

43413213030