

CERTIFIED LAND CORNER RESTORATION

Index No. 011

State of Wisconsin }
County of Forest } ss.

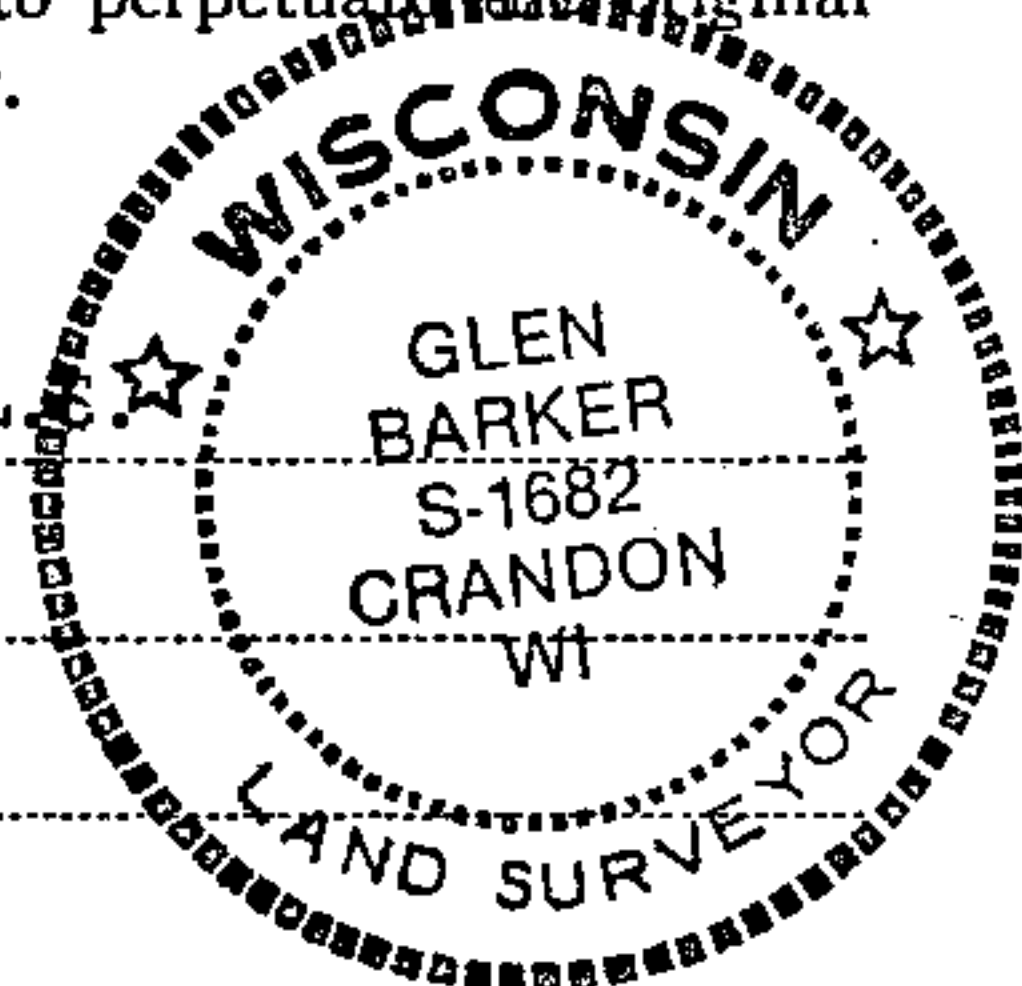
History of original corner establishment:
Cedar stake set by Kimberly Clark.

I Glen Barker, do hereby certify that on the 17th day of May, 1983, I found ~~found~~ evidence of the NC 1/16 corner of Section 21 Township 34, North, Range 13 East, Fourth Principal Meridian, as described hereon; and that from this evidence I established a new monument and accessories as described hereon to perpetuate the original location of this corner.

Resident witnesses:

J. Claflin - R.L.

H. Wagoner



Description of corner evidence found:

Total distance from previously established 1/4 corner between sections 16 & 21 to C 1/4 Section 21 position is 2640.32 ft.
Set NC 1/16 1320.16 intermediate.

Description of monument and accessories I established to perpetuate the original location of this corner.

Set a 1" iron pipe with 2" diameter alloy cap stamped:

S1682

Monument projects 18" above ground.

T34N R13E

Marked NBTs:

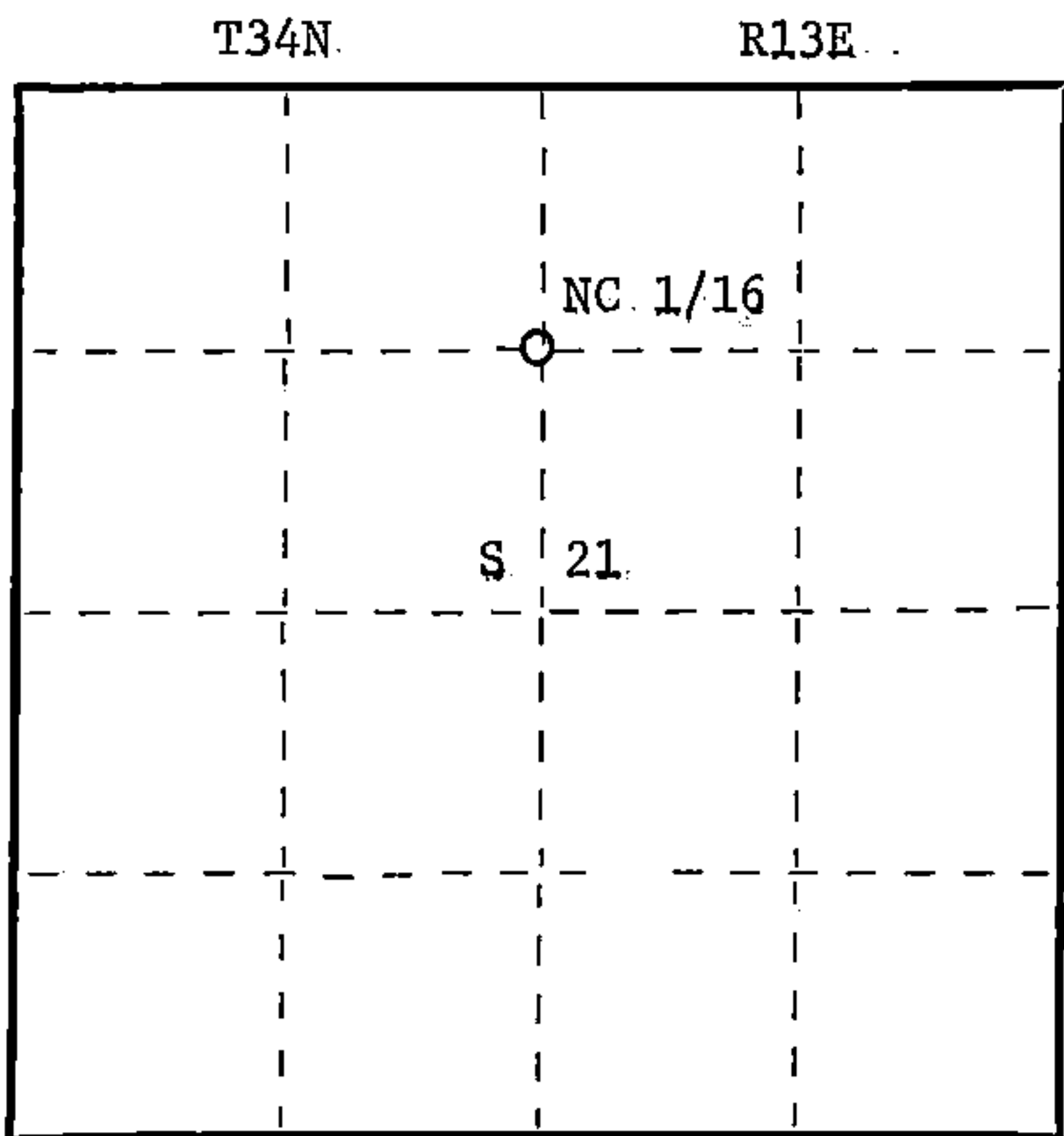
White ash 5" S40E 14.51 ft.

NC 1/16 S 21

Maple 6" N77W 18.89 ft.

Scribed 1/16 - B.T.

CPI - 1983



○ = Corner monument restored.

Dated at Rhinelander, Wis., this 9th day of June, 1983.

Signature Glen Barker Title Registered Land Surveyor Registration No. S1682
(County Surveyor, Registered Land Surveyor, or other duly authorized official)

Office of Register of Deeds, County of Forest, I hereby certify that the within instrument was filed in this office for record on the 15th day of June, 1983 at 2:00 o'clock P. M.

Eugene Staszny
(Register of Deeds)
By _____ Deputy

DOCUMENT NO. **123602**

Stock No. 26272

FORM 985

43413213020