

CERTIFIED LAND CORNER RESTORATION

Index No. M-23

**M 23**

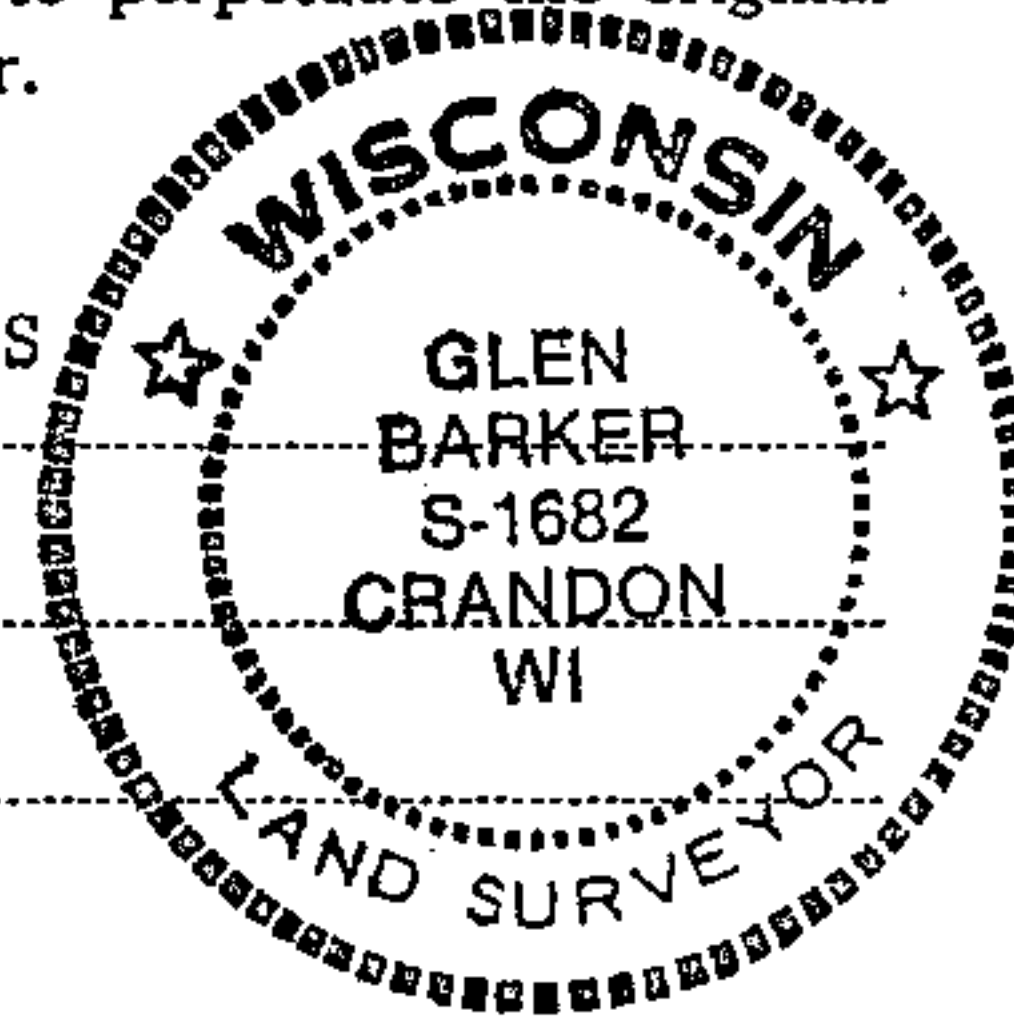
State of Wisconsin }  
County of Forest } ss.

History of original corner establishment:  
No evidence of any previous corner.

I Glen Barker, do hereby certify that on the 13th day of September, 19 82, I ~~found~~ found Est. ~~evidence~~ of the SC 1/16 corner of Section 13 Township 34, North, Range 13 East, Fourth Principal Meridian, as described hereon; and that from this evidence I established a new monument and accessories as described hereon to perpetuate the original location of this corner.

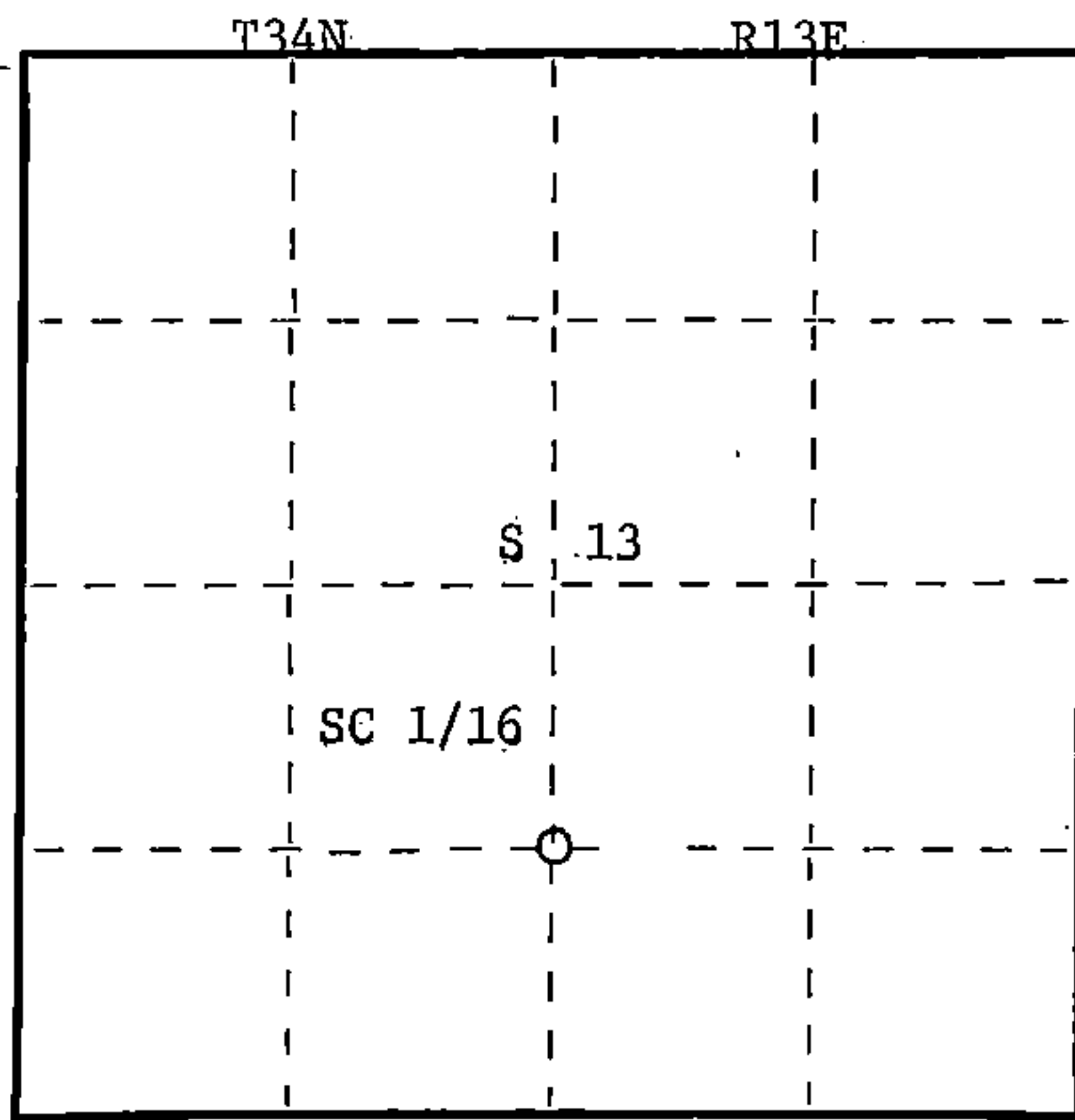
Description of corner evidence found:  
Total distance from 1/4 corner between sections 13 & 24 to C1/4 section 13, is 2640.34 ft. at bearing N0-51-00E. Set SC 1/16 1320.17 ft. intermediate.

Resident witnesses:  
Jim Claflin - RLS  
H. Wagoner



Description of monument and accessories I established to perpetuate the original location of this corner.  
Set-a 1" iron pipe with 2" diameter alloy cap stamped: S1682  
Monument projects 18" above ground. T34N R13E  
Marked NBTs:  
Sugar 5" N40E 20.30 ft. S 13  
Sugar 6" S46E 24.62 ft. SC 1/16  
Scribed 1/16 - BT CPI - 1982

FORM 985 M. C. MILLER CO., MILWAUKEE



○ = Corner monument restored.

Dated at Rhinelander, Wis., this 30th day of December, 1982.

Signature Glen Barker Title Registered Land Surveyor Registration No. S1682  
(County Surveyor, Registered Land Surveyor, or other duly authorized official)

Office of Register of Deeds, County of Forest I hereby certify that the within instrument was filed in this office for record on the 16th day of February, 1983 at 10:30 o'clock A. M.

Eugene Stutzman  
(Register of Deeds)

By \_\_\_\_\_ Deputy

DOCUMENT NO. **122908**

43413131020