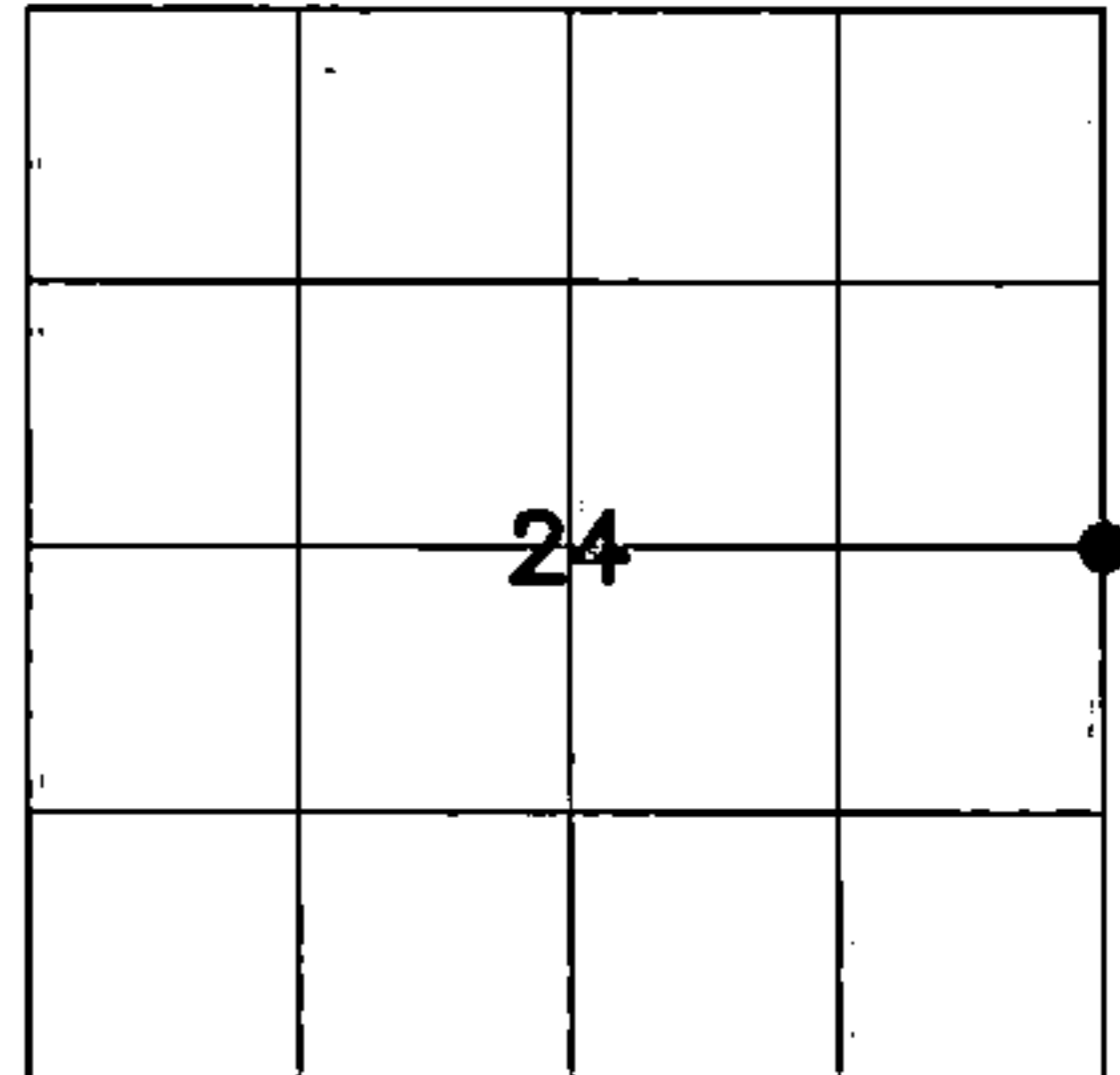


U.S. PUBLIC LAND SURVEY MONUMENT RECORD

HISTORY OF ORIGINAL CORNER ESTABLISHMENT AND SUBSEQUENT RESTORATION AND DESCRIPTION OF ANY RECORD, MONUMENT OCCUPATIONAL, TESTIMONIAL OR OTHER EVIDENCE CONSIDERED:

THE ORIGINAL CORNER WAS SET BY ALFRED MILLARD IN 1857 WITH THE ORIGINAL BEARING TREES OF:
HEMLOCK 12" N55°E18 LINKS
HEMLOCK 10" S20°W 17 LINKS
1941- C.E. WALKER SET A 2" PIPE WITH BRASS CAP
1970-HALLISY FOUND THE BRASS CAP AND SET ADDITIONAL BEARING TREES, S40°E 5.83', S60°W 20.42'.
1995-TLUSTY FOUND THE 2" PIPE AND SOME OF HALLISY'S BEARING TREES. HE THEN ADDED SOME ADDITIONAL BEARING TREES
2016-I FOUND THE 2" PIPE WITH THE BRASS CAP AND SET TIES AS SHOWN

● = LOCATION OF CORNER

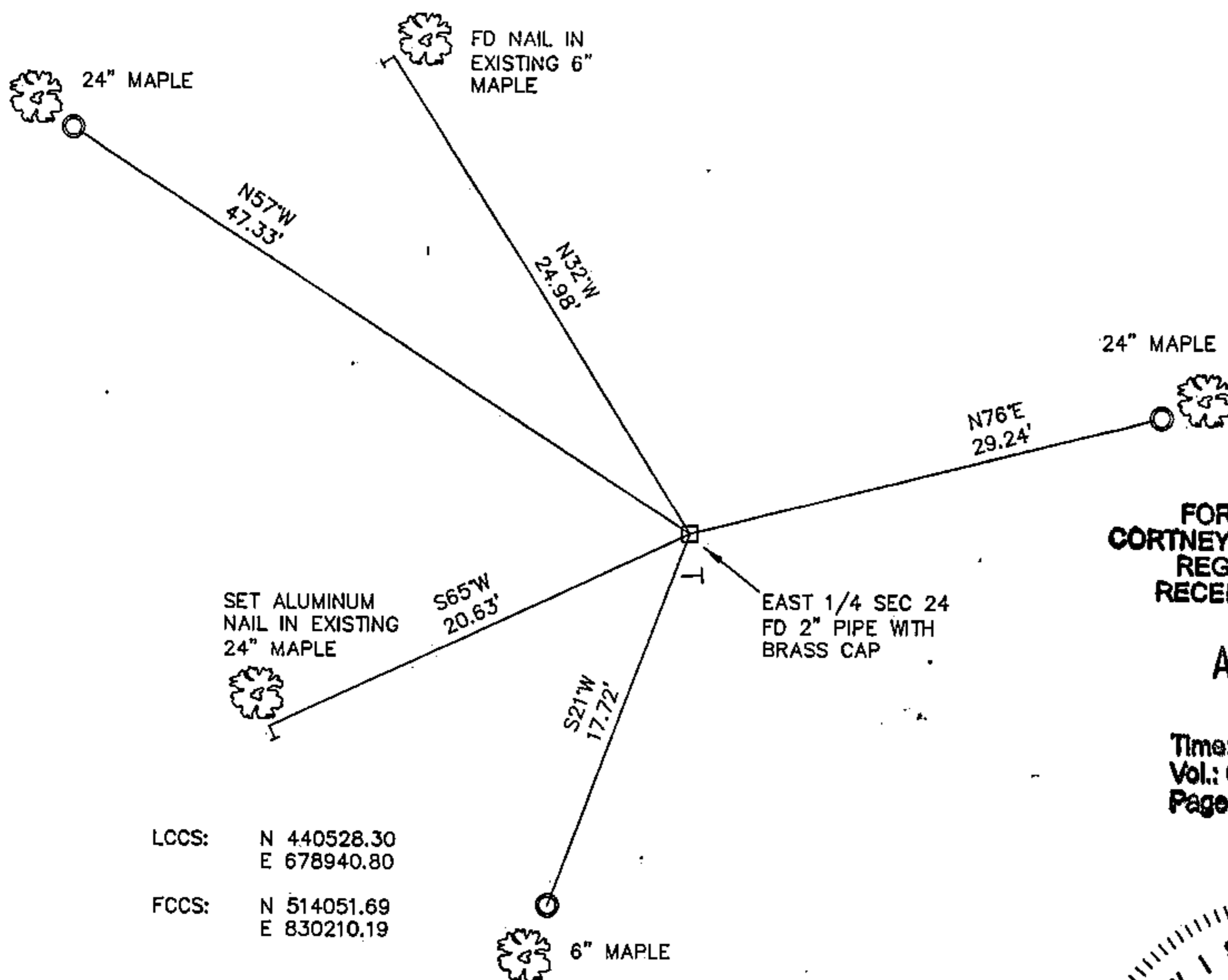


SECTION 24
TOWNSHIP 34 NORTH, RANGE 12 EAST
TOWN OF AINSWORTH
LANGLADE COUNTY, WISCONSIN

CORNER WAS: (CHECK ALL THAT APPLY)

- RESTORED THROUGH ACCEPTANCE OF AN OBLITERATED EVIDENCE LOCATION
- RESTORED THROUGH ACCEPTANCE OF A FOUND PERPETUATED LOCATION
- CONSIDERED A LOST CORNER AND REESTABLISHED THROUGH LOST CORNER PROPORTIONATE METHODS (INCLUDE A PLAN VIEW DRAWING SHOWING DISTANCES AND DIRECTIONS TO OTHER PUBLIC LAND SURVEY CORNERS USED FOR PROPORTIONING AND DETERMINING THE CORNER LOCATION)
- RESTORED OR REESTABLISHED IN A LOCATION THAT DIFFERS FROM A PREVIOUS RESTORATION OR RE-ESTABLISHMENT (INCLUDE A PLAN VIEW DRAWING AND INDICATE WHAT WAS SET AND/OR FOUND)
- CHECK IF THERE IS ADDITIONAL INFORMATION ON BACK

DESCRIBE THE MONUMENT AND ACCESSORIES USED TO PERPETUATE THE LOCATION OF THE CORNER. (INCLUDE A PLAN VIEW DRAWING AND INDICATE WHAT WAS SET AND/OR FOUND) ALSO INCLUDE FOUR TIES TO THE SECTION CORNER AND DESCRIPTION OF THE TIES.



○ SET 3/4" X 30" IRON REBAR AT ALL TIE LOCATIONS

BEARINGS REFERENCED TO MAGNETIC

T - WHITE VINYL POST SET

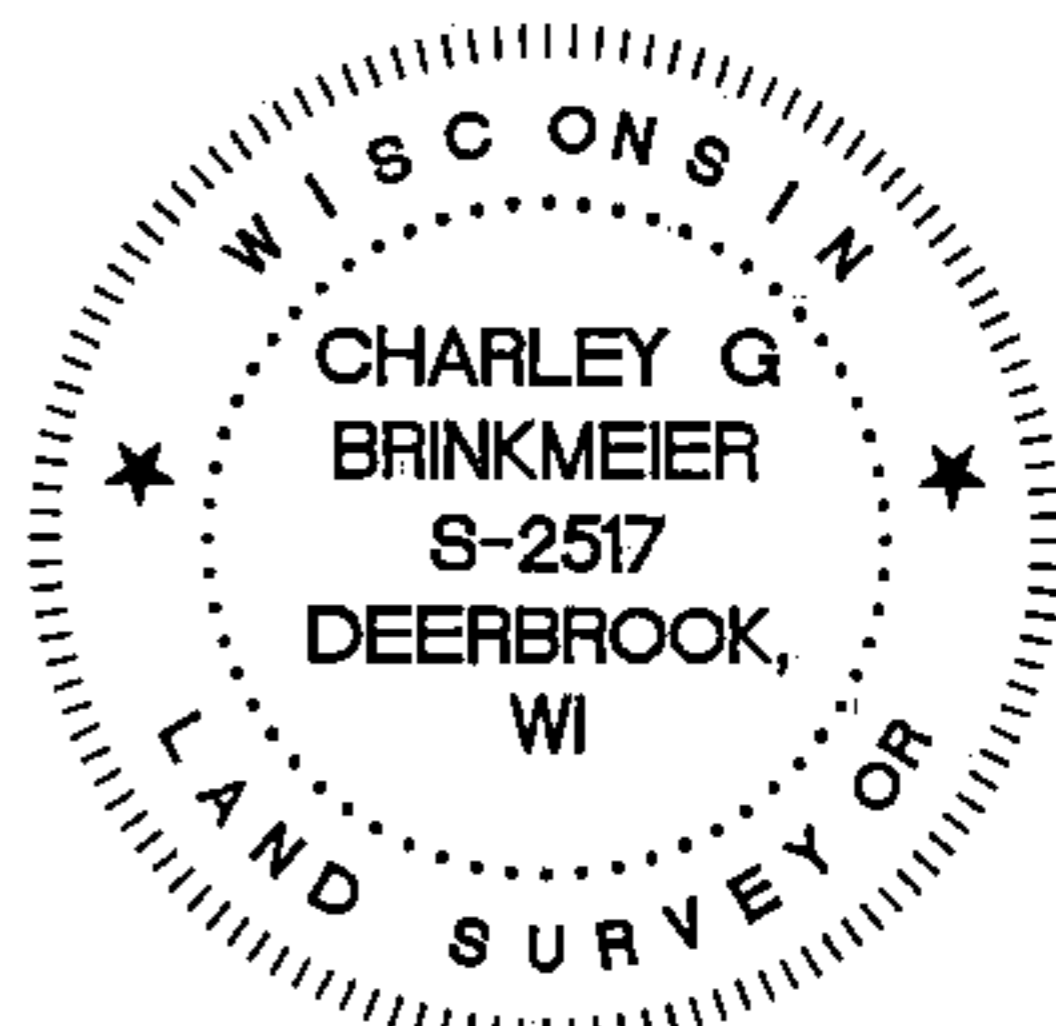
FOREST COUNTY, WI
CORTNEY BRITTEN CLEEREMAN
REGISTER OF DEEDS
RECEIVED FOR RECORD

APR 27 2018

Time: 10:00 A. M.
Vol.: Corner Restoration
Page Number: P-1

LCCS: N 440528.30
E 678940.80

FCCS: N 514051.69
E 830210.19



CHARLEY G. BRINKMEIER

(type or print name) CERTIFY THAT THE CORNER LOCATION SHOWN ON THIS RECORD WAS DETERMINED BY ME OR UNDER MY DIRECTION AND CONTROL AND THAT THIS U.S. PUBLIC LAND SURVEY MONUMENT RECORD IS CORRECT AND COMPLETE TO THE BEST OF MY KNOWLEDGE AND BELIEF.

Charley G. Brinkmeier
SIGNATURE

4-17-17
DATE

43412 24 2000

INDEX NO.

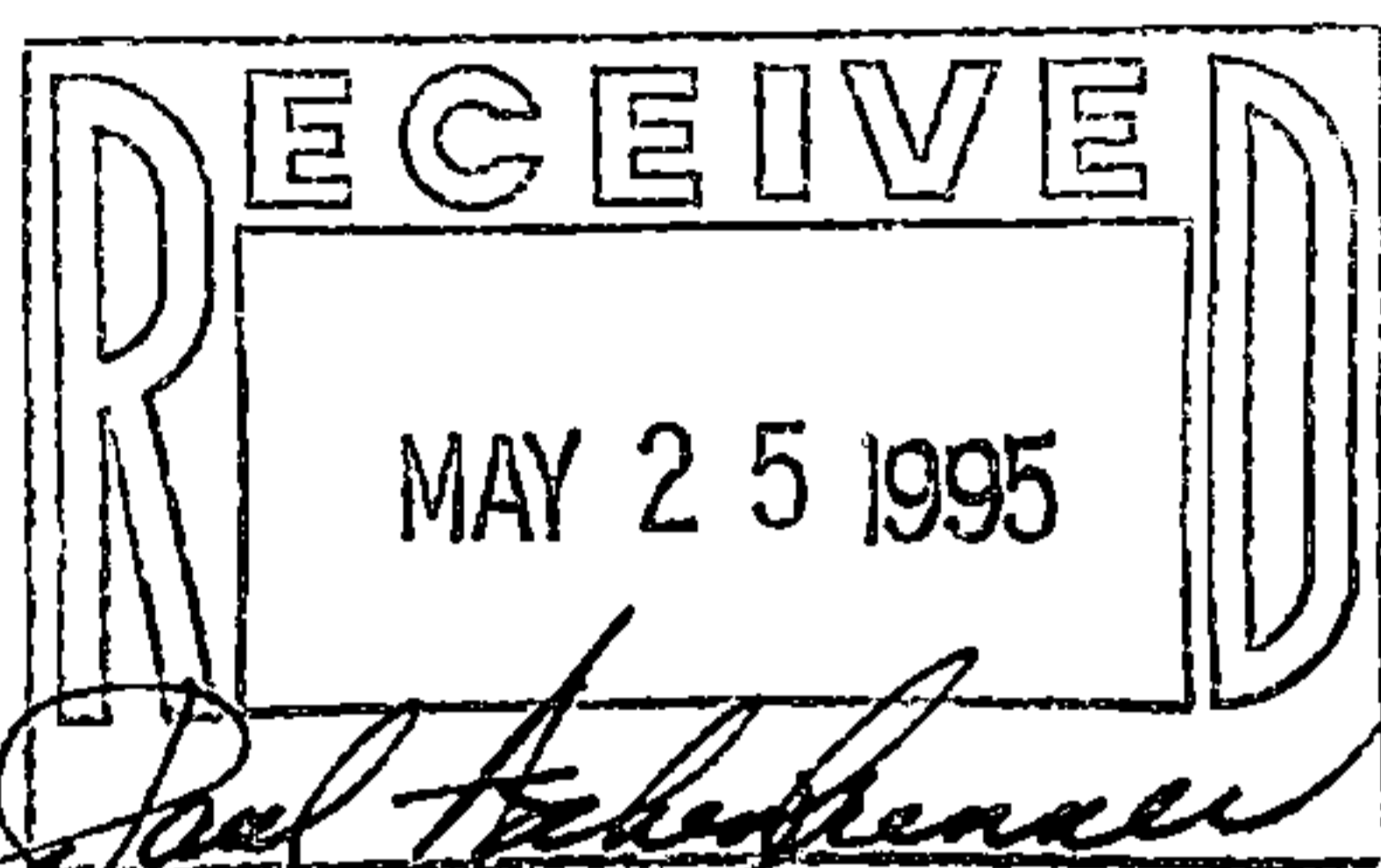
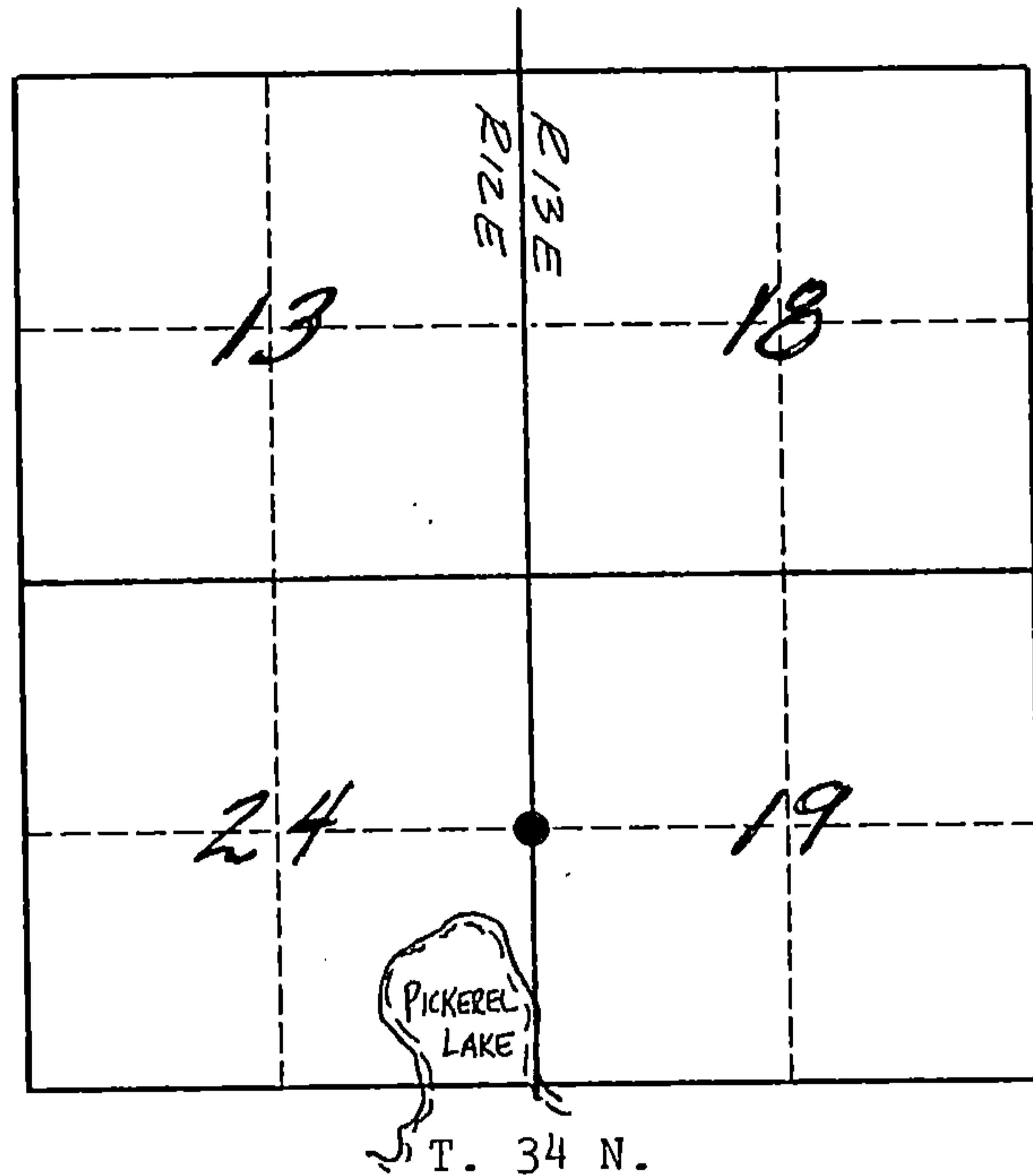
U. S. PUBLIC LAND SURVEY MONUMENT RECORD

INSTRUCTIONS:

This record shall show the location of the corner and shall include all of the following nine elements (a through i).

- (a) Identify the corner by reference to the U.S. public land survey system.
 ● = Corner monument restored.

The East Quarter corner of Section 24, Township 34 North, Range 12 East, Langlade County, Wisconsin.



Copy from Langlade Co. Surveyor - Orig filed Langlade Co.

- (b) Describe any record evidence, monument evidence, occupational evidence, testimonial evidence or any other material evidence you considered, and whether the monument was found or placed.

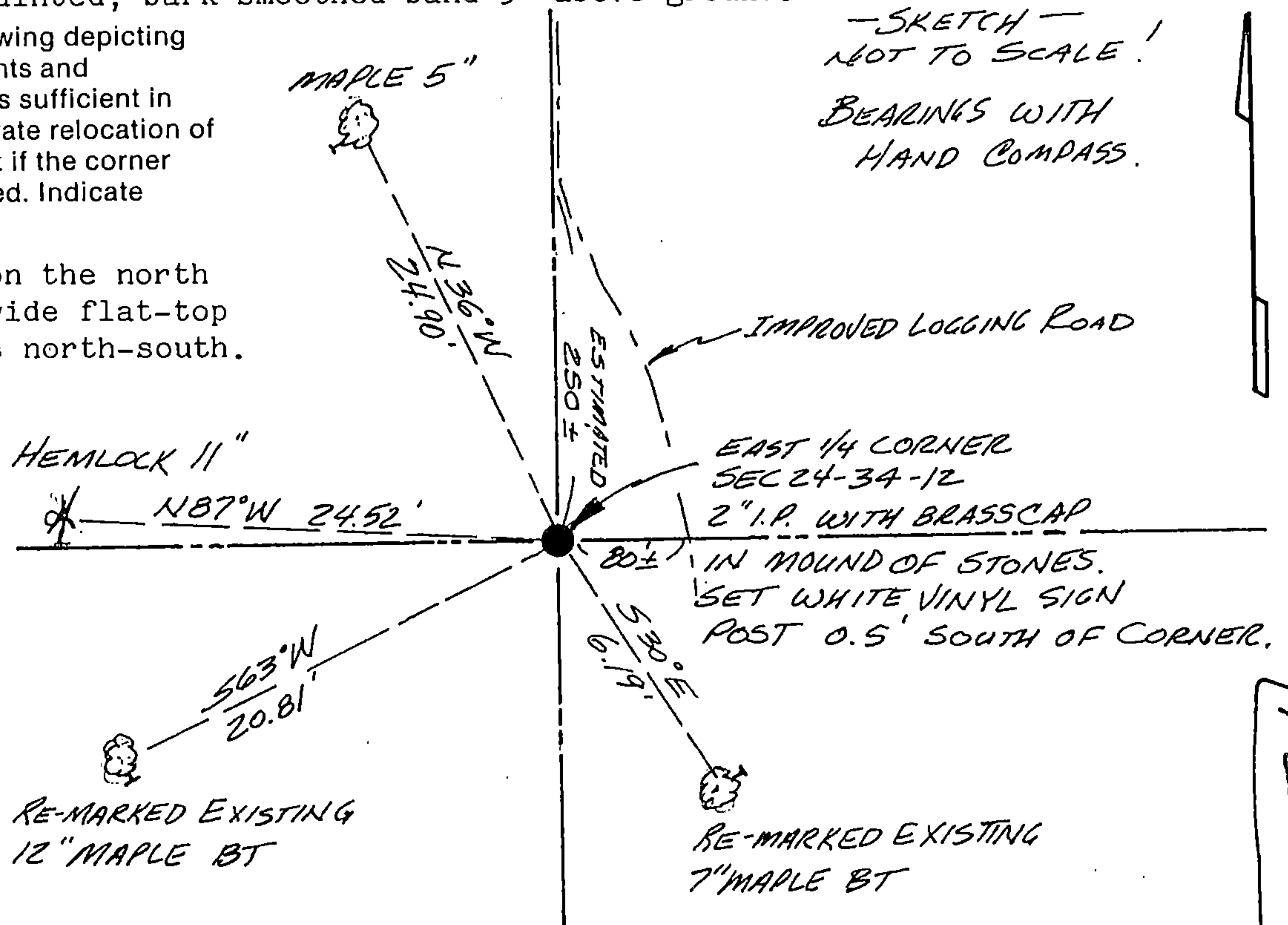
The original corner was established in 1857 by Alfred Millard. OBT's: Hemlock, 12", N55E, 11.8 ft., hemlock, 10", S20W, 11.22 ft. C.E. Walker set a 2" iron pipe with brass cap for the corner in 1941, as evidenced by the monument that now exists. Ray Hallsy found Walkers pipe in 1970 and marked two maple BT's. 05/11/95 I found Walkers pipe and Hallsys BT's. I have no records of Walkers, but I do find a stump hole at the SW OBT location, and I find an old maple stump, 15" dia., that was cut about 30 years ago, and could be growing out of the OBT stump hole. I accepted Walkers monument as best evidence of the original corner location, and reset it in place so that the top of it is 30" above ground in mound of stones.

- (c) In the plan view drawing below, provide reference ties to at least 4 witness monuments, or, if the location is within a municipality, to at least 2 witness monuments. (Witness monuments shall be made of concrete, natural stone, iron or other equally durable material.) Describe witness monuments. FB 5-156

BT's measured to the head of an aluminum nail set in a low blaze on the left side of each tree. BT's have BT sign nailed on tree facing corner, just above blue painted, bark smoothed band 5' above ground.

- (d) Show a plan view drawing depicting the relevant monuments and reference ties which is sufficient in detail to enable accurate relocation of the corner monument if the corner monument is disturbed. Indicate north.

The corner is on the north end of a 70'+ wide flat-top ridge that runs north-south.



43412242000

P.S. LANGLAD

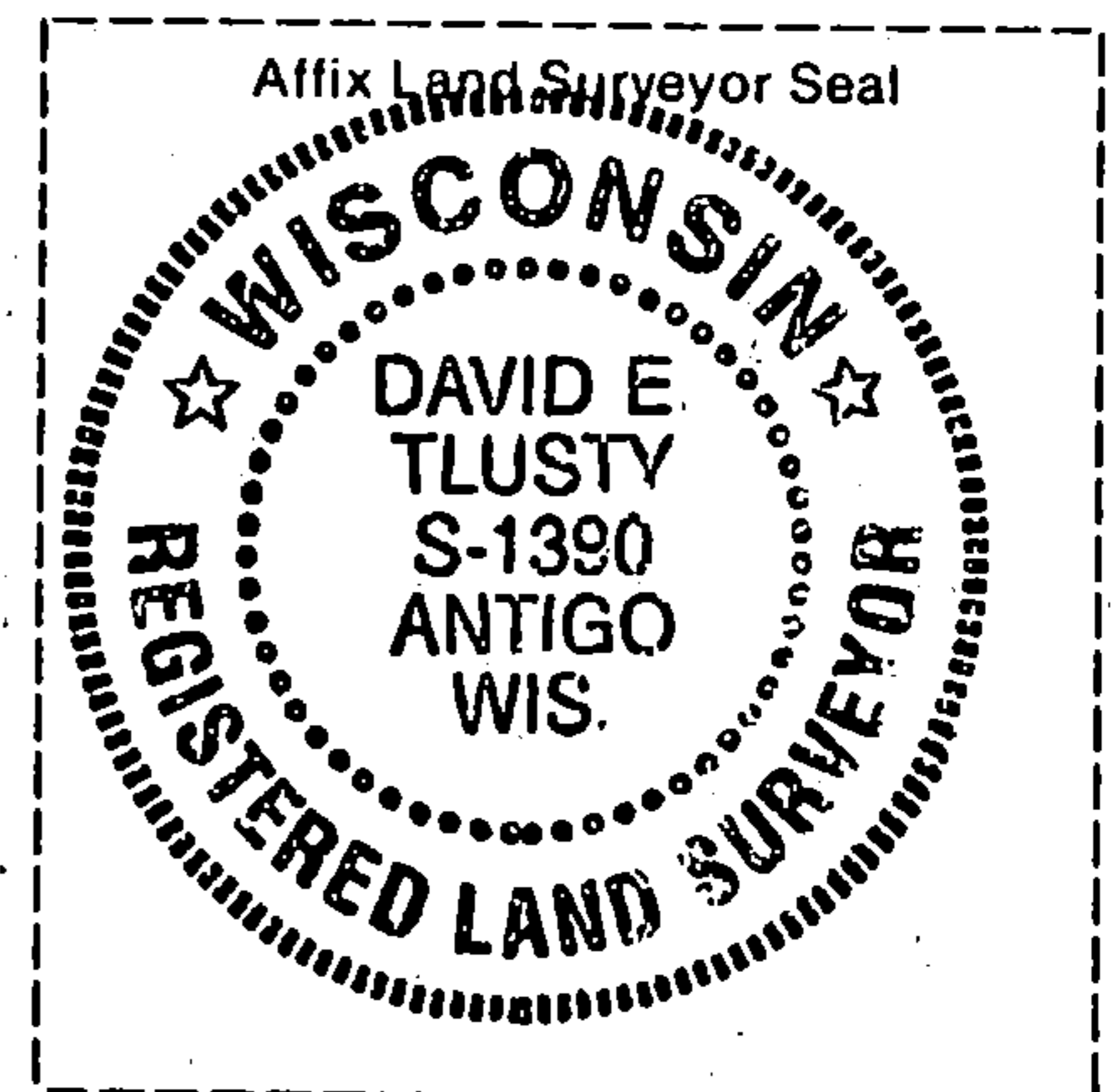
Describe any material discrepancy between the location of the corner as restored or reestablished and the location of that corner as previously restored or reestablished by distance and direction. Show the discrepancy on the plan view drawing under (d), above. Show the distances between the corner as previously restored or reestablished and (1) the corner as restored or reestablished, and (2) to at least 2 of the witness monuments shown on the drawing in (d), above.

NO DISCREPANCY

(f) Was the corner restored through acceptance of (1) an obliterated evidence location, or, (2) a found perpetuated location?

FOUND PERPETUATED LOCATION.

(g & h) Was the corner reestablished through lost corner proportionate methods? If so, show the method, including the directions and distances to other public land survey corners used as evidence or used for proportioning in determining the corner location.



(i) I, DAVID E. TLUSTY LANGLADE COUNTY SURVEYOR
(type or print name)

certify that the corner location shown on this record was determined by me or under my direction and control and that this U.S. Public Land Survey Monument Record is correct and complete to the best of my knowledge and belief.

David E. Tlusty _____ *5/12/95*
Signature Date