

# U.S. PUBLIC LAND SURVEY MONUMENT RECORD

HISTORY OF ORIGINAL CORNER ESTABLISHMENT AND SUBSEQUENT RESTORATION AND DESCRIPTION OF ANY RECORD, MONUMENT OCCUPATIONAL, TESTIMONIAL OR OTHER EVIDENCE CONSIDERED:

THE ORIGINAL CORNER WAS SET BY ALFRED MILLARD IN 1857 WITH THE ORIGINAL BEARING TREES OF:

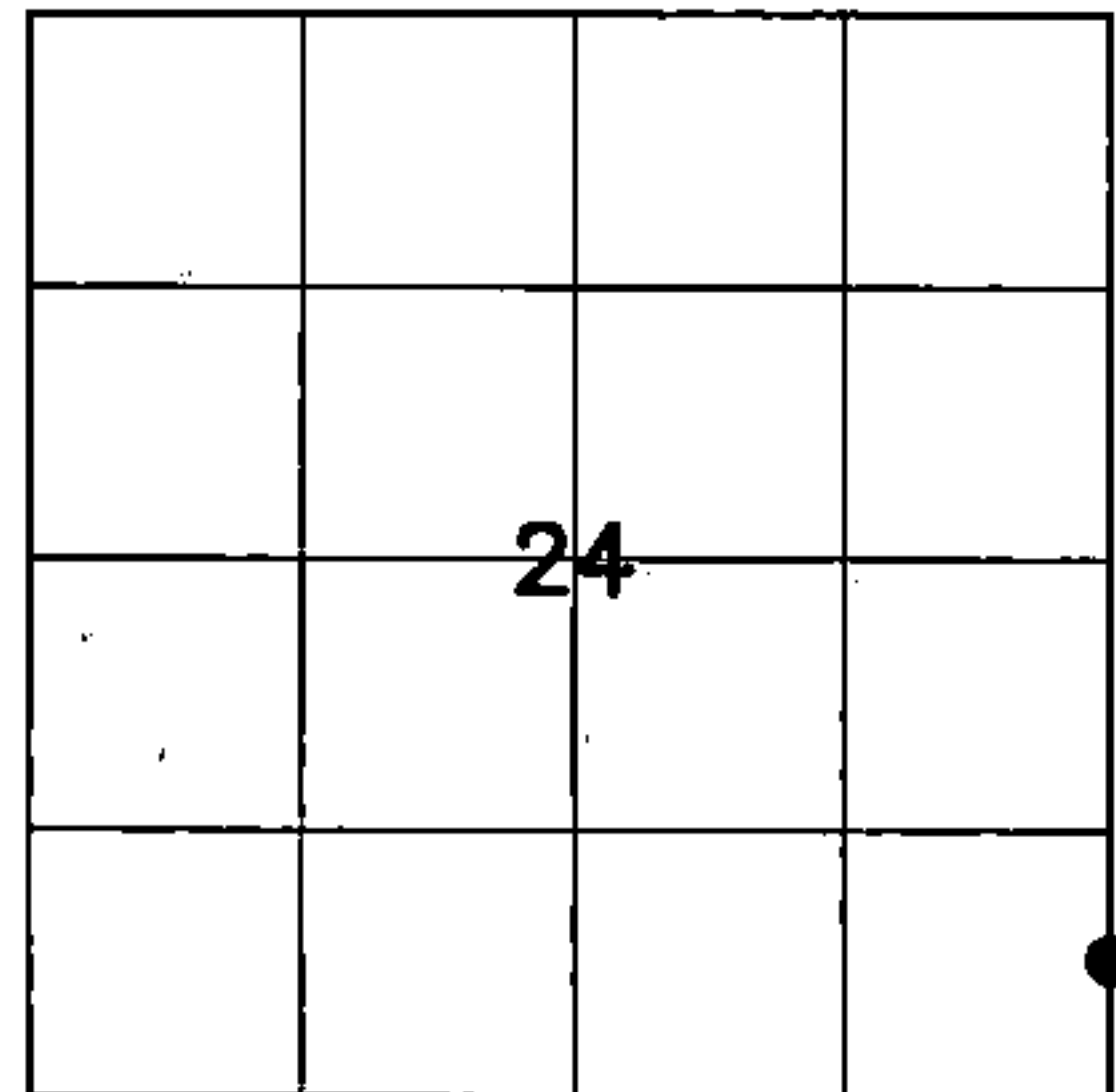
TAMARACK 12" N87°E 29 LINKS

TAMARACK 6" N22°W 7 LINKS

1995-TLUSTY FOUND A 2" IRON PIPE WITH BRASS CAP SET BY C.E. WALKER WHICH HE ACCEPTED AS THE ORIGINAL LOCATION.

2016-I FOUND THE 2" PIPE WITH THE BRASS CAP AND SET TIES AS SHOWN

● = LOCATION OF CORNER



SECTION 24

TOWNSHIP 34 NORTH, RANGE 12 EAST

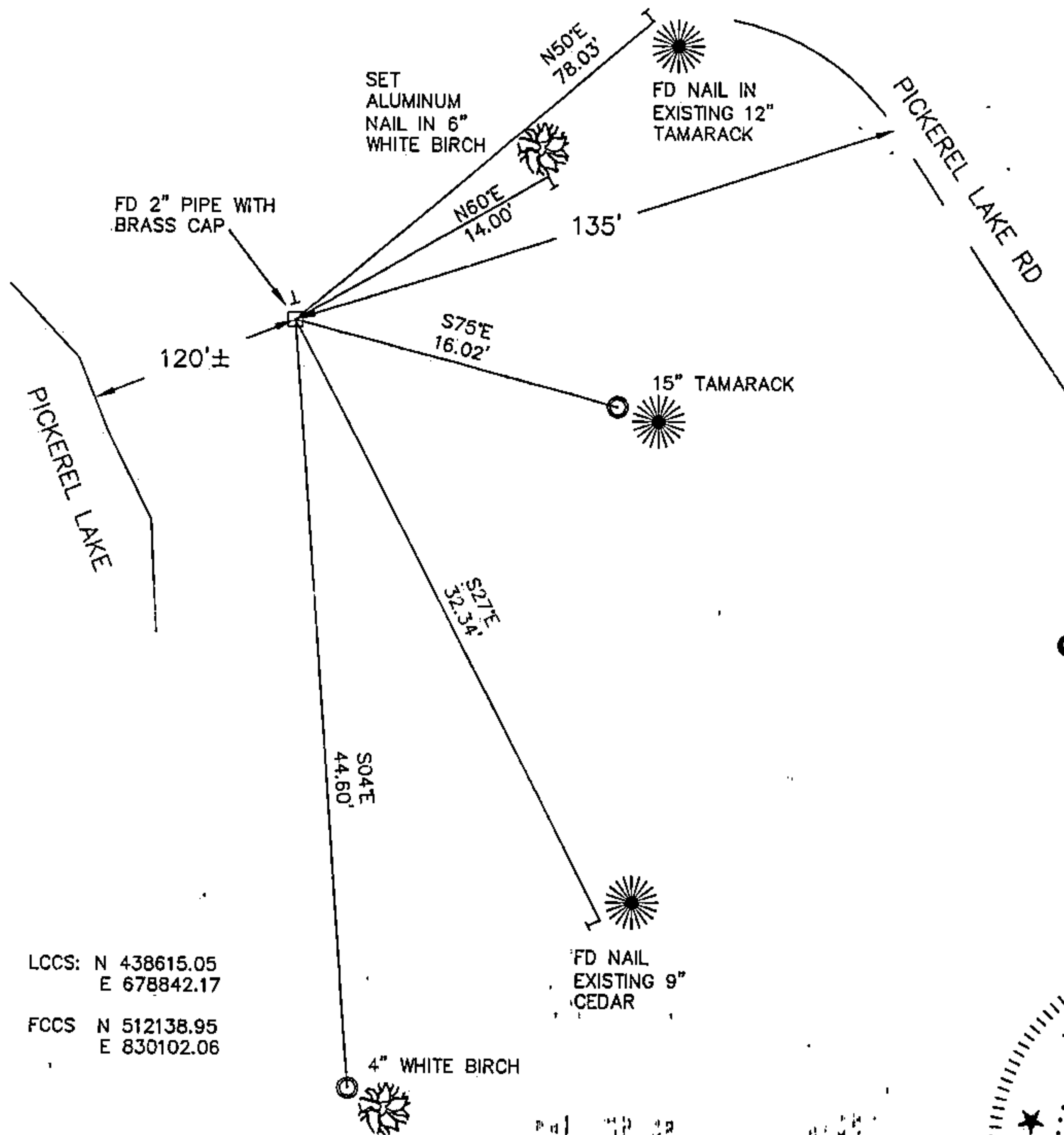
TOWN OF AINSWORTH

LANGLADE COUNTY, WISCONSIN

CORNER WAS: (CHECK ALL THAT APPLY)

- RESTORED THROUGH ACCEPTANCE OF AN OBLITERATED EVIDENCE LOCATION
- RESTORED THROUGH ACCEPTANCE OF A FOUND PERPETUATED LOCATION
- CONSIDERED A LOST CORNER AND REESTABLISHED THROUGH LOST CORNER PROPORTIONATE METHODS (INCLUDE A PLAN VIEW DRAWING SHOWING DISTANCES AND DIRECTIONS TO OTHER PUBLIC LAND SURVEY CORNERS USED FOR PROPORTIONING AND DETERMINING THE CORNER LOCATION)
- RESTORED OR REESTABLISHED IN A LOCATION THAT DIFFERS FROM A PREVIOUS RESTORATION OR RE-ESTABLISHMENT (INCLUDE A PLAN VIEW DRAWING AND INDICATE WHAT WAS SET AND/OR FOUND)
- CHECK IF THERE IS ADDITIONAL INFORMATION ON BACK

DESCRIBE THE MONUMENT AND ACCESSORIES USED TO PERPETUATE THE LOCATION OF THE CORNER. (INCLUDE A PLAN VIEW DRAWING AND INDICATE WHAT WAS SET AND/OR FOUND) ALSO INCLUDE FOUR TIES TO THE SECTION CORNER AND DESCRIPTION OF THE TIES.



○ SET 3/4" X 30" IRON REBAR AT ALL TIE LOCATIONS

BEARINGS REFERENCED TO MAGNETIC

T - WHITE VINYL POST SET

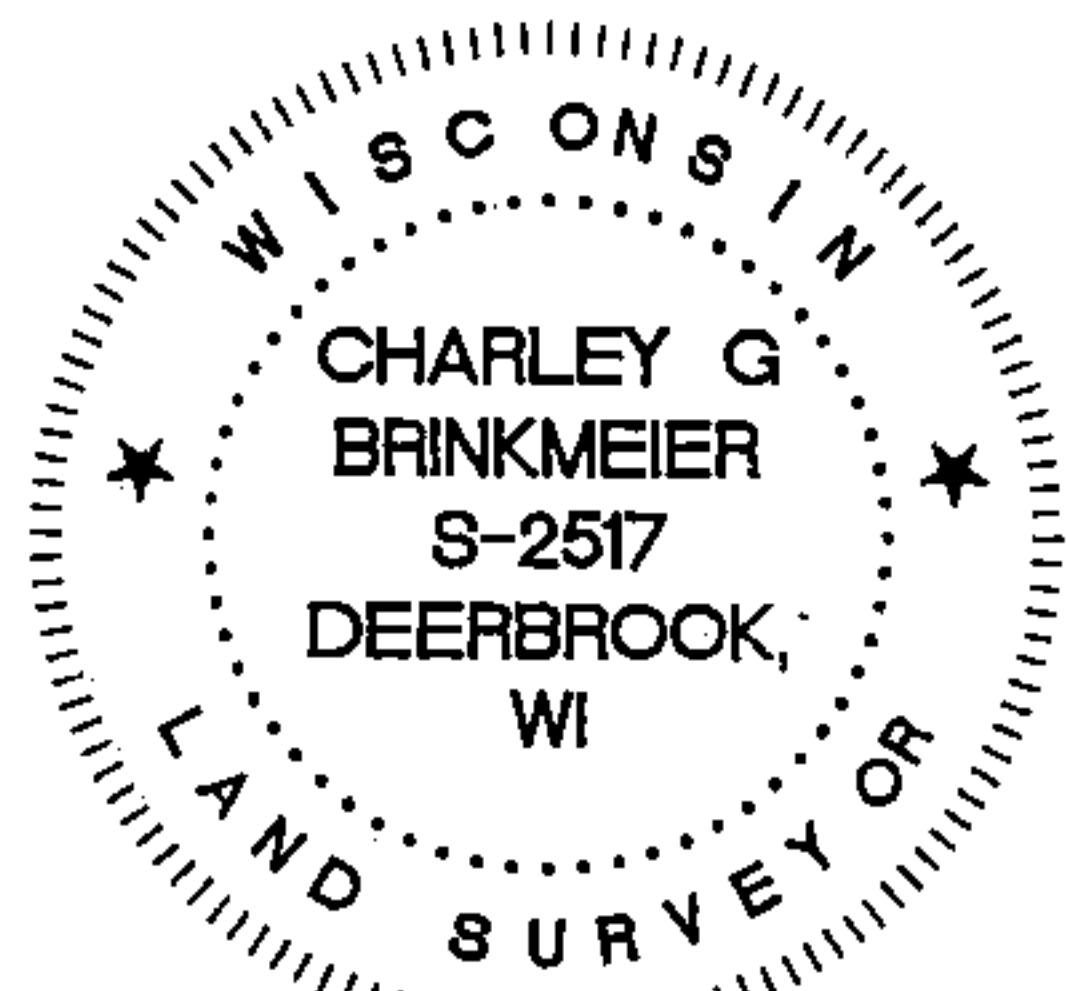
FOREST COUNTY, WI  
CORTNEY BRITTEN CLEEREMAN  
REGISTER OF DEEDS  
RECEIVED FOR RECORD

APR 27 2018

Time: 10:00 A.M.  
Vol.: Corner Restoration  
Page Number: Q-1

LCCS: N 438615.05  
E 678842.17

FCCS: N 512138.95  
E 830102.06



CHARLEY G. BRINKMEIER

(Type or print name) CERTIFY THAT THE CORNER LOCATION SHOWN ON THIS RECORD WAS DETERMINED BY ME OR UNDER MY DIRECTION AND CONTROL AND THAT THIS U.S. PUBLIC LAND SURVEY MONUMENT RECORD IS CORRECT AND COMPLETE TO THE BEST OF MY KNOWLEDGE AND BELIEF.

*Charley G. Brinkmeier*  
SIGNATURE

1-17-17  
DATE

43A12 2A 0500

INDEX NO.

CERTIFIED LAND CORNER RESTORATION

Index No. 43412240500

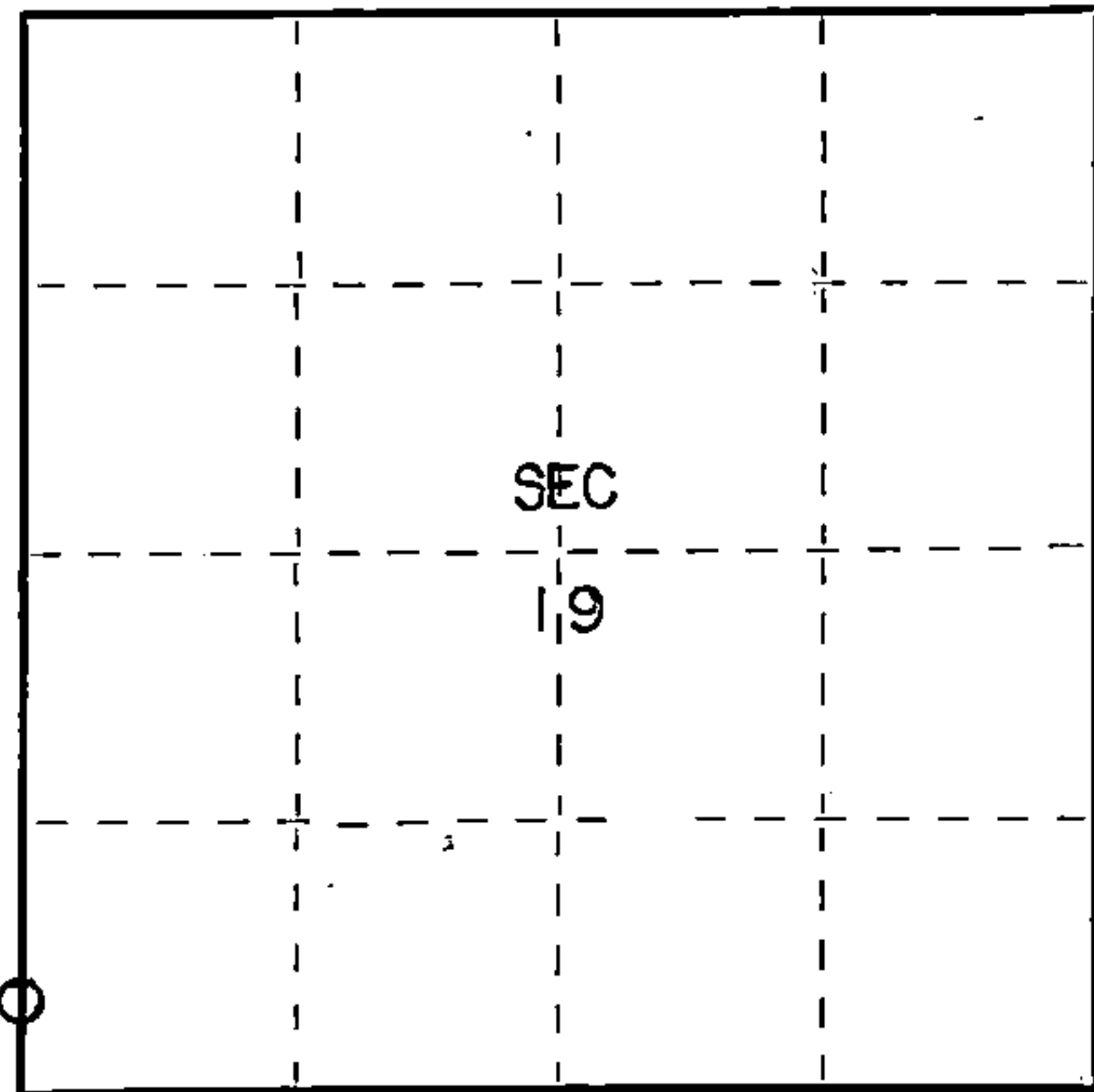
State of Wisconsin }  
 County of Forest } ss.

I Thomas R. Arnott, do hereby certify that on the 22nd day of September, 1975, I found evidence of the M.C. corner of sections 19 & 24 Township 34, North, Range 12 & 13 E., Fourth Principal Meridian, as described hereon; and that from this evidence I established a new monument and accessories as described hereon to perpetuate the original location of this corner.

Resident witnesses:

Herbert Wagoner

FORM 985 R. C. MILLER CO., MILWAUKEE



○ = Corner monument restored.

History of original corner establishment:

Tamarac	12	N87E	29 Lks.
Tamarac	6	N22W	7 Lks.

Description of corner evidence found:

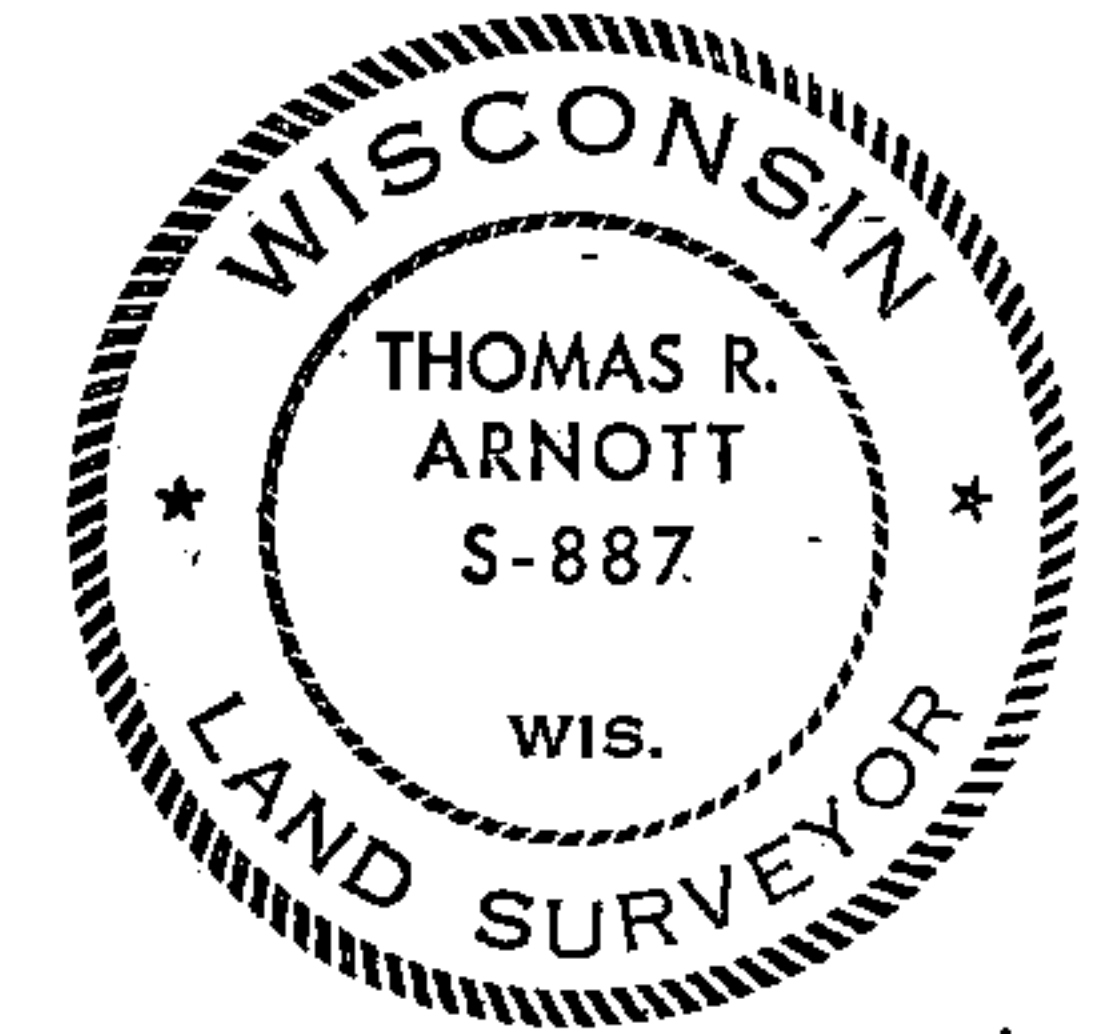
2" iron pipe with brass capp set by C.E. Walker in 1941  
 2 wood post found

Description of monument and accessories I established to perpetuate the original location of this corner.

Left monument set by Walker

Ties:

Tamarac	10	S82E	17.37 feet
Tamarac	8	S33E	32.24 feet



Dated at Crandon, Wis., this 11th day of November, 1975.

Signature Thomas R. Arnott Title Land Surveyor Registration No. S-887  
 (County Surveyor, Registered Land Surveyor, or other duly authorized official)

Office of Register of Deeds, County of Forest, I hereby certify that the within instrument was filed in this office for record on the 11th day of November, 1975 at 4 o'clock P. M.

Engene Stutzman Document Number 108207  
 (Register of Deeds)

By \_\_\_\_\_ Deputy