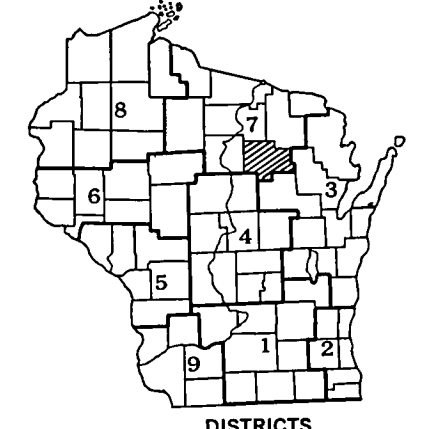
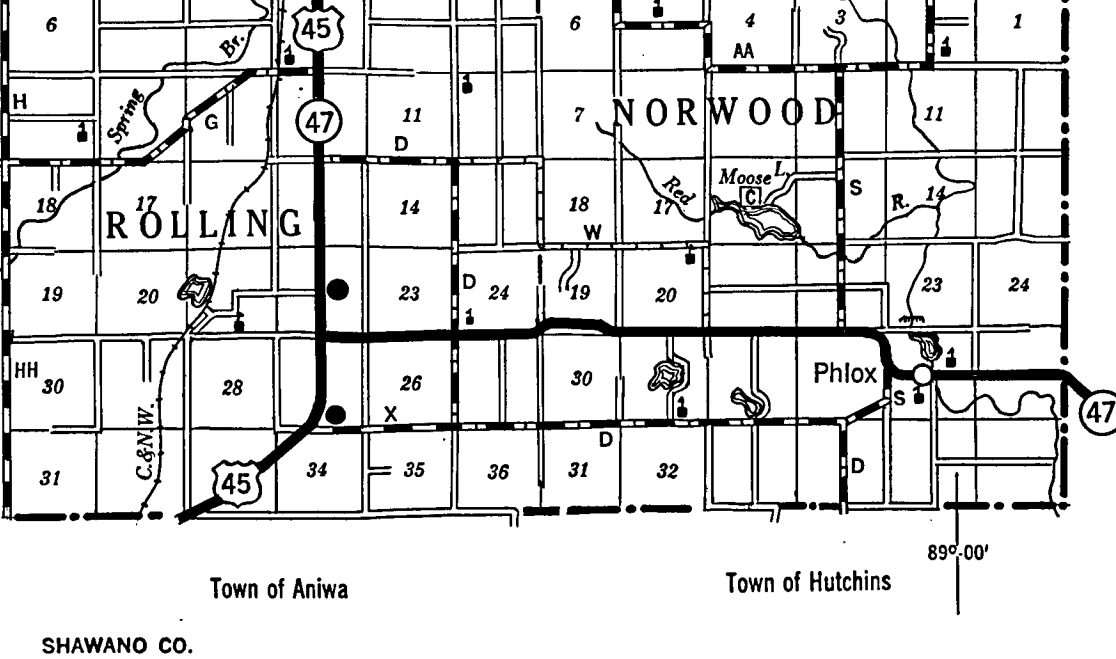
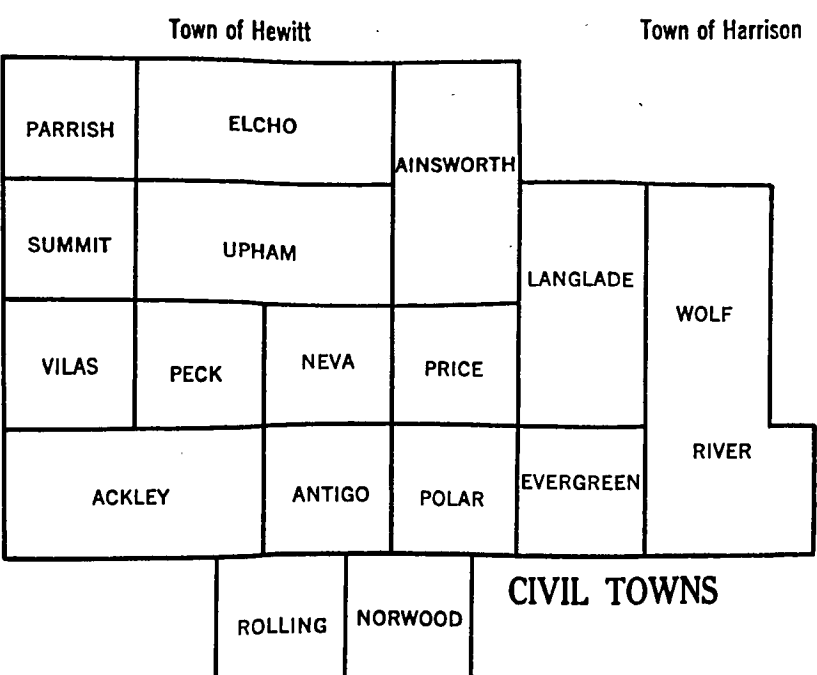
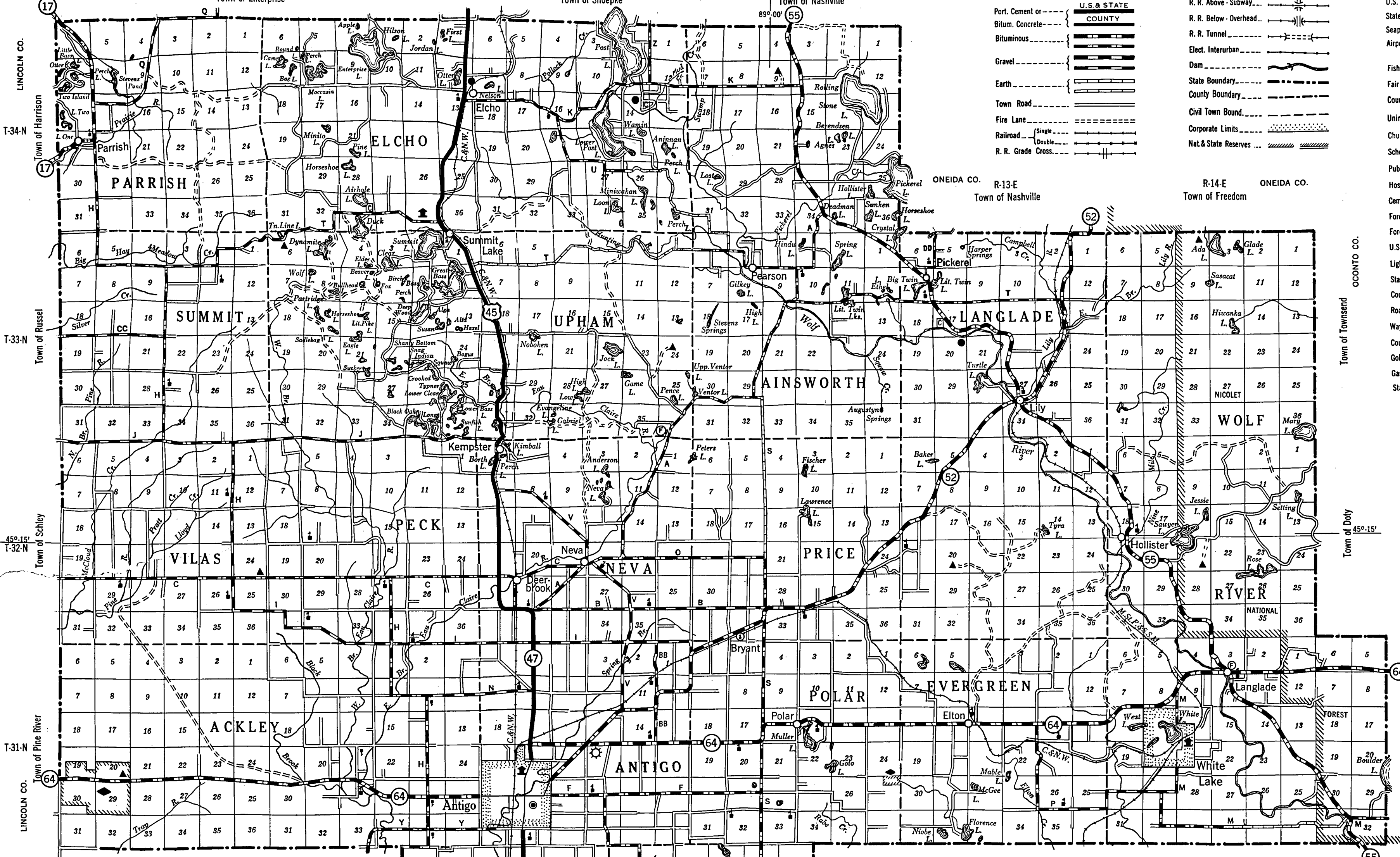


ONEIDA CO. R-9-E R-10-E R-11-E R-12-E ONEIDA CO.

LEGEND

- U.S. & STATE COUNTY
- Port. Cement or Bitum. Concrete
- Bituminous
- Gravel
- Earth
- Town Road
- Fire Lane
- Railroad
- R. R. Grade Cross
- R. R. Above - Subway
- R. R. Below - Overhead
- R. R. Tunnel
- Elect. Interurban
- Dam
- State Boundary
- County Boundary
- Civil Town Bound.
- Corporate Limits
- Nat. & State Reserves
- U.S. Highway Number
- State Highway Number
- Seaplane Base
- Airport
- Fish Hatchery
- Fair Grounds, Race Track
- County Seat
- Unincorporated Villages
- Church, Religious Institution
- Schoolhouse, Educational Inst.
- Public Hunting & Fishing Grounds
- Hospital
- Cemetery
- Forest Service Lookout Tower
- Forest Ranger Station
- U.S. Forest Service Park
- Light House
- State Park
- County or City Park
- Roadside Park
- Wayside
- County Asylum
- Golf Course
- Game Farm
- State Nursery



Area.....858 Sq. Mi.  
 Population.....21,975  
 Co. Seat.....Antigo

**LANGLADE CO.**  
 STATE HIGHWAY COMMISSION OF WISCONSIN

STATE OFFICE BUILDING  
 Madison, Wisconsin

SCALE 2 MILES

Corrected for  
 FEB.-1954

Compiled from U. S. G. S. Quadrangles  
 Based on Aerial Photographs