

FED. ROAD DIST. NO.	STATE	FED. AID PROJ. NO.	SHEET NO.	TOTAL SHEETS
4	WISC.	1059	1	20
DIVISION JOB NO. 4708				

INDEX OF SHEETS

SHEET NO.	TITLE SHEET
1	TITLE SHEET
2	TYPICAL CROSS SECTION OF IMPROVEMENT & ESTIMATE
3	RIGHT OF WAY
4	PLAN AND PROFILE STA. 0 TO STA. 30
5	" " " " 30 " " 60
6	" " " " 60 " " 90
7	" " " " 90 " " 99+35
8	CONSTRUCTION DETAILS
9-11	DRAINAGE STRUCTURES
12-18	CROSS-SECTIONS
18-20	GRADE SHEETS

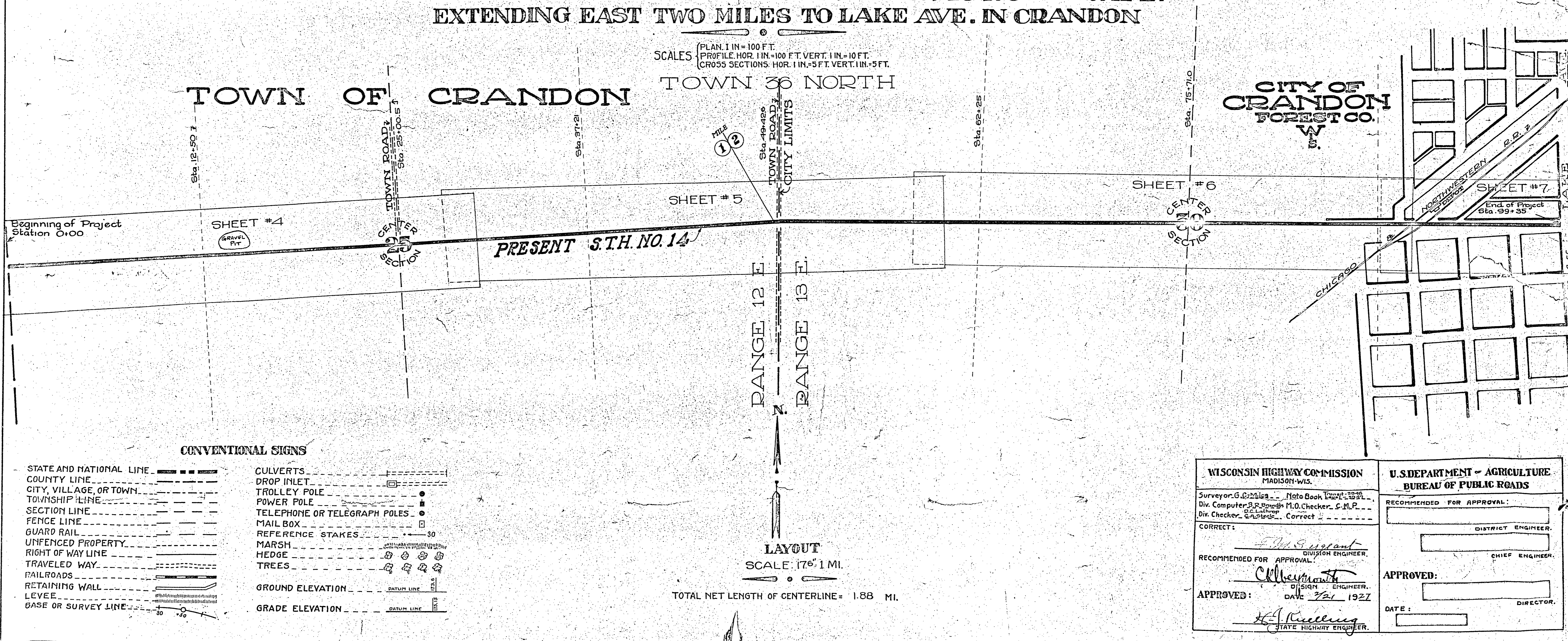
STATE OF WISCONSIN
WISCONSIN HIGHWAY COMMISSION

**PLAN AND PROFILE OF PROPOSED
 RHINELANDER - LAONA ROAD
 MONICO - CRANDON ROAD
 FOREST COUNTY**

FEDERAL AID PROJECT

BEGINNING AT THE WEST 1/4 CORNER OF SEC. 25 T. 36 N. R. 12 E.
 EXTENDING EAST TWO MILES TO LAKE AVE. IN CRANDON

SCALES: PLAN, 1 IN. = 100 FT.
 PROFILE, HOR. 1 IN. = 100 FT. VERT. 1 IN. = 10 FT.
 CROSS SECTIONS, HOR. 1 IN. = 5 FT. VERT. 1 IN. = 5 FT.

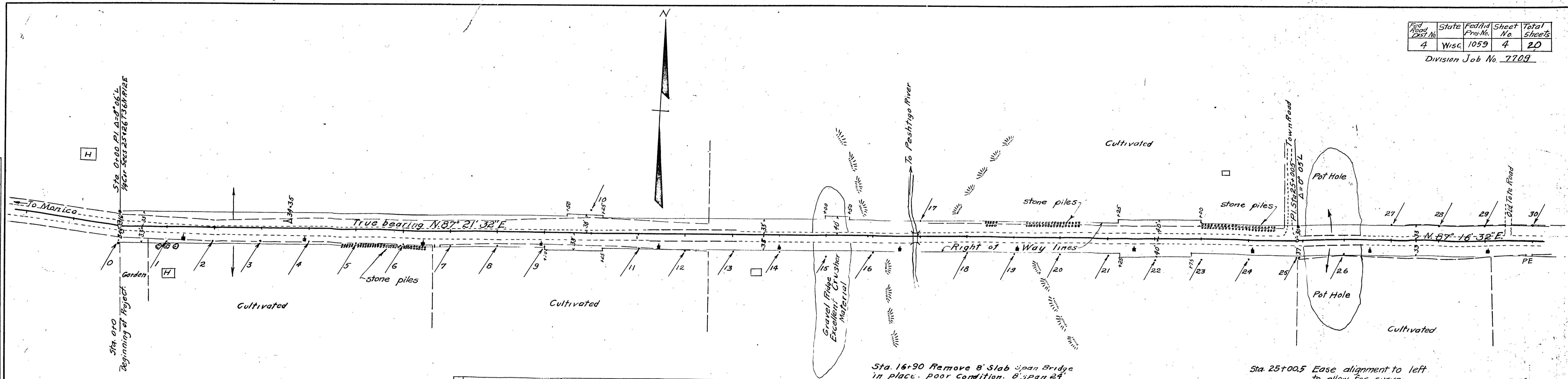


CONVENTIONAL SIGNS

STATE AND NATIONAL LINE	CULVERTS
COUNTY LINE	DROP INLET
CITY, VILLAGE, OR TOWN	TROLLEY POLE
TOWNSHIP LINE	POWER POLE
SECTION LINE	TELEPHONE OR TELEGRAPH POLES
FENCE LINE	MAIL BOX
GUARD RAIL	REFERENCE STAKES
UNFENCED PROPERTY	MARSH
RIGHT OF WAY LINE	HEDGE
TRAVELED WAY	TREES
RAILROADS	GROUND ELEVATION
RETAINING WALL	GRADE ELEVATION
LEVEE	
BASE OR SURVEY LINE	

WISCONSIN HIGHWAY COMMISSION MADISON, WIS. Surveyor: G. C. Miles Div. Computer: S. R. Brown Div. Checker: G. A. Stadel CORRECT:	U.S. DEPARTMENT OF AGRICULTURE BUREAU OF PUBLIC ROADS RECOMMENDED FOR APPROVAL: DISTRICT ENGINEER CHIEF ENGINEER APPROVED: DATE: 7/21 1922 STATE HIGHWAY ENGINEER
---	--

PLAN
 SURVEYED BY: C. J. STAPLETT
 PLOTTED BY: C. J. STAPLETT
 NOTE BOOK NO. 3946
 RT. OF WAY CHECKED BY: C. J. STAPLETT



Summary of Miscellaneous Quantities this sheet

Item	Sta to Sta	Amount	Unit	Totals
Clearing	0+00 to 30+00	0.95	Acres	0.95
Grubbing	" " " "	0.83	"	0.83
Guard Rail Type A	1+70 - 3+25	144	Lin. Ft.	
" " " "	10+85 - 13+35	392	"	
" " " "	15+60 - 20+50	928	"	
" " " "	24+80 - 26+60	336	"	1800
Guard posts Type C	0+00 Proj. Marker	1	Past	1
Stone piles & detached Bldgs	0+00 to 30+00	79	Cu. Yds.	79
Name Plate at Bridge		1	Plate	1

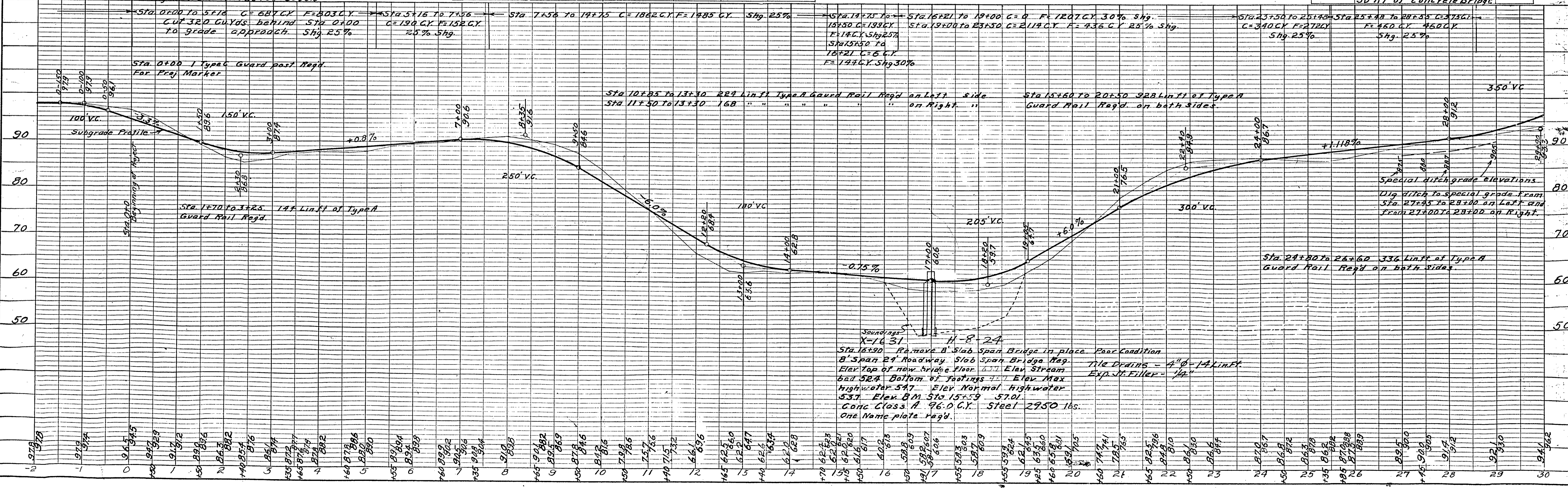
Sta. 16+90 Remove 8' Slab Span Bridge in place. poor condition. 8' span 24' Rowy. Slab span Bridge Regd.

Sta. 25+00.5 Ease alignment to left to allow for curve.

Bench Marks

Sta.	Description	Elev.
0-210	R.R. Spike in 12" Maple 50ft. Park Hotel sign on tree	100.00
15+59	R.R. Spike in lone 18" Birch 50' ft. of concrete bridge	57.01

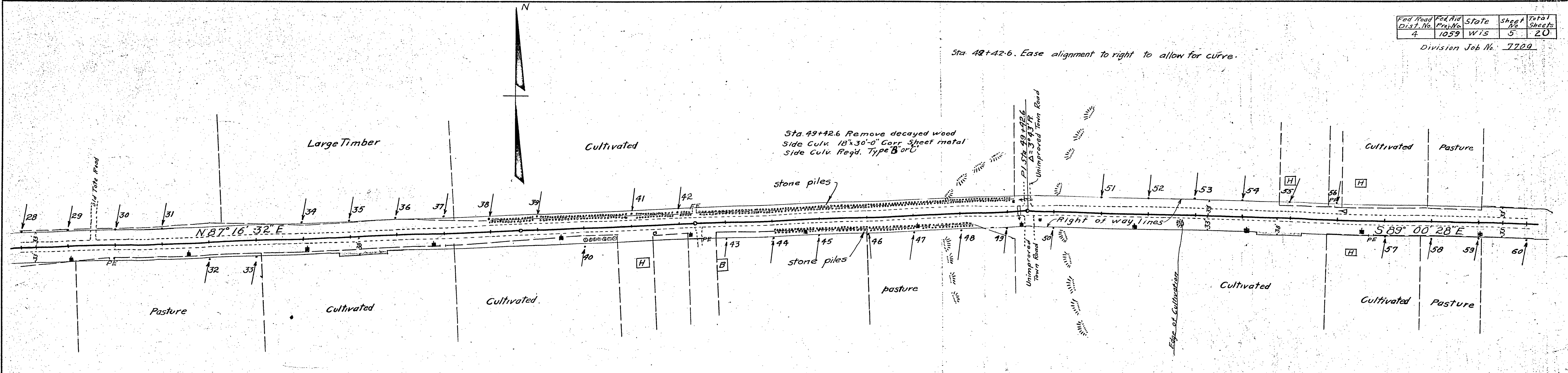
Net Center Line Length Sta. 0+00 to 30+00 = 3000.0'



PROFILE
 SURVEYED BY: C. J. STAPLETT
 PLOTTED BY: C. J. STAPLETT
 NOTE BOOK NO. 3947
 GRADES CHECKED BY: C. J. STAPLETT
 STRUCTURE NOTATIONS CHYD.

Sta 42+42.6. Ease alignment to right to allow for curve.

DATE: 1/15/54
 BY: J. J. G. Miles
 CHECKED: J. J. G. Miles
 NO. 3342



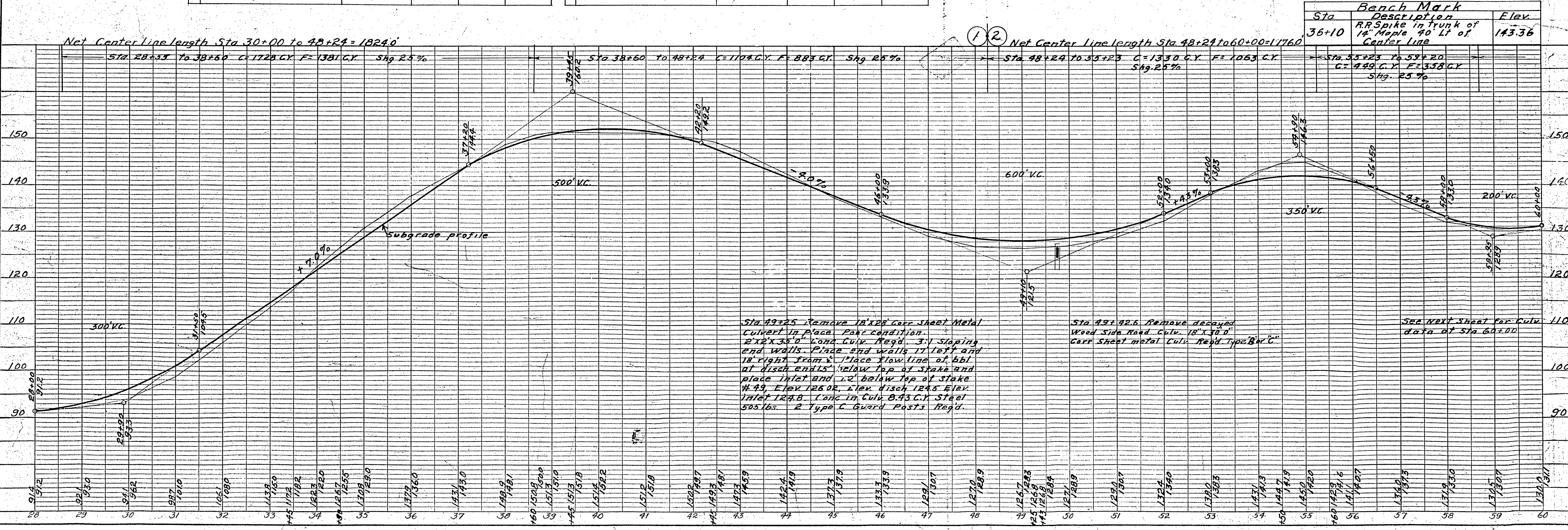
Item	Sta to Sta	Amount	Unit	Totals
Clearing	30 to 48+24	0.57	Acres	0.57
Grubbing	" " "	0.51	"	0.51
Stone piles & Boulders	" " "	278	Cu.Yds.	278

Item	Sta to Sta	Amount	Unit	Totals
Clearing	48+24 to 60	0.13	Acres	0.13
Grubbing	" " "	0.13	"	0.13
Type C Guard posts	49+25 to 60	2	Posts	2
Stone piles & Boulders	48+24 to 60	61	Cu.Yds.	61

Sta 49+25. Remove 18' x 28' Corr Sheet metal Culv. in place poor condition 2' x 2' x 35' Conc. Culv. Regd. 3:1 Sloping end walls 2 Type C Guard posts Req'd.

See next sheet for Culv. data Sta. 60+00

DATE: 1/15/54
 BY: J. J. G. Miles
 CHECKED: J. J. G. Miles
 NO. 3342

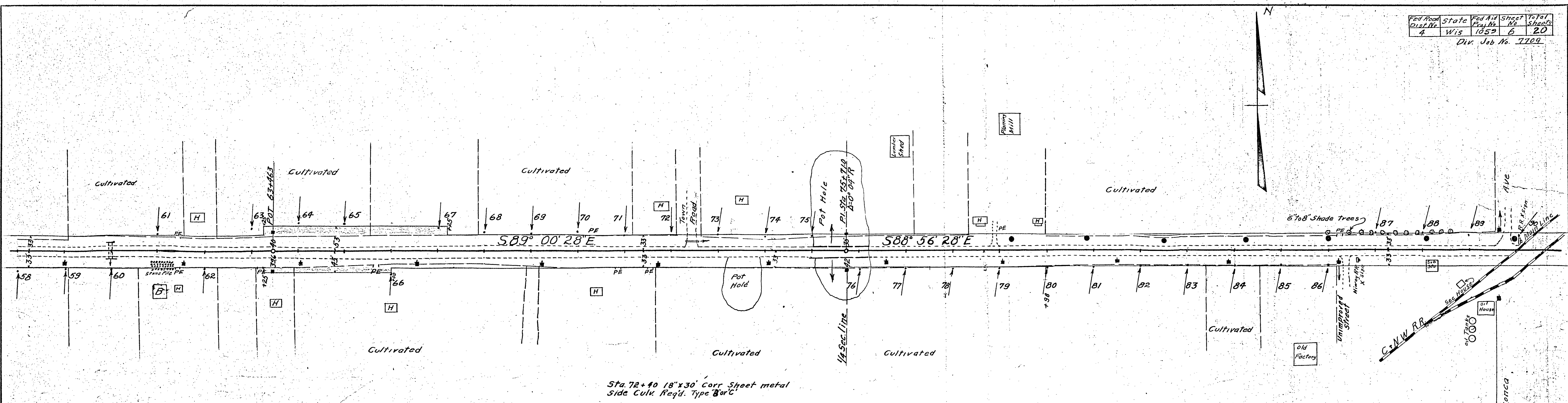


Sta 49+25. Remove 18' x 28' Corr Sheet Metal Culvert in place poor condition. 2' x 2' x 35' Conc. Culv. Regd. 3:1 sloping end walls. Place end walls 11' left and 18' right from S. Place flow line at 66" at dish ends. Place flow line at 66" at dish ends. Place top of stake and place inlet and 12" below top of stake #43. Elev. 126.0 or Elev. dish 124.5 Elev. inlet 124.8 Conc. in Culv. B. 43 C.V. Steel 50516s. 2 Type C Guard Posts Req'd.

Sta 49+42.6. Remove decayed Wood Side Road Culv. 18' x 10' 0" Corr Sheet metal Culv. Regd. Type B or C.

See next sheet for Culv. data at Sta 60+00

DATE 9/15/25
 BY S. J. STEINBERG
 SUPERVISOR
 PLAN NO. 33976
 NOTE BOOK ALIGNMENT CHECKED
 RT. OF WAY CHECKED



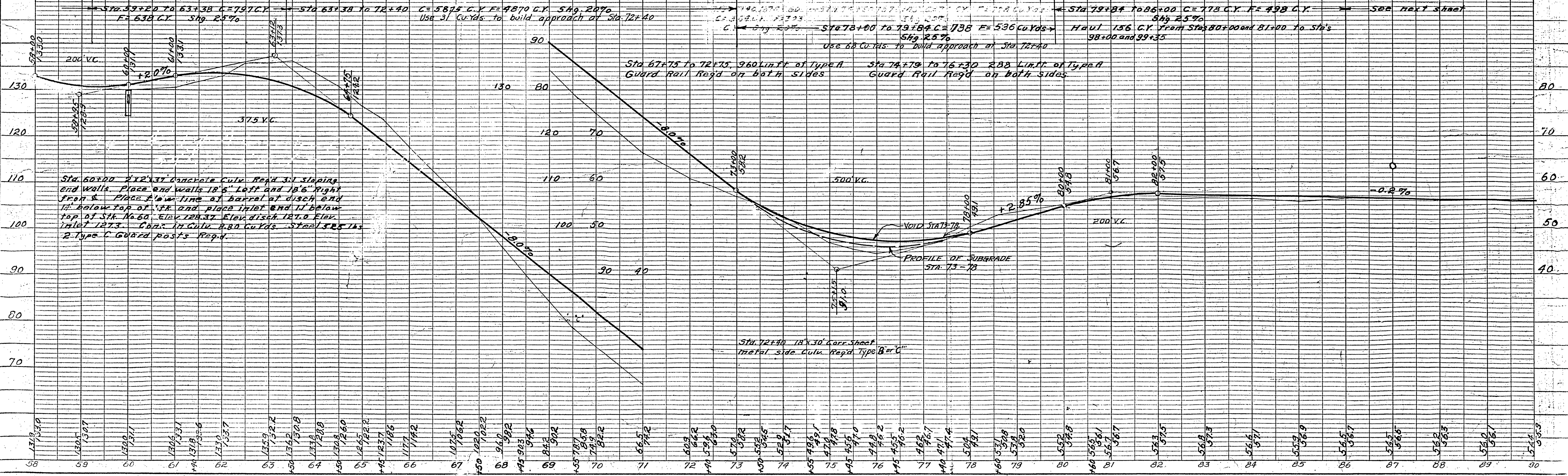
Sta. 60+00 2x2x37' Conc. Culu. Reqd.
 3:1 Sloping endwalls. 2 Type C
 Guard posts Reqd.

Sta. 72+40 18"x30" Corr Sheet metal
 side Culu. Reqd. Type B or C

Item	Sta to Sta	Amount	Unit	Totals
Clearing	60 to 86	0.56	Acres	0.56
Grubbing	60 to 86	0.64	"	0.64
Type A Guard Rail	67+75 to 72+75	960	Lin Ft	
Type C Guard Posts	74+75 to 76+30	288	"	1248
Stone piles & Boulders	60 to 90	77	Cu.Yds	77

Sta.	Bench Marks Description	Elev.
62+73	R.R. Spike in 10 Spruce on top of big hill between	138.26
79+10	Small maple tree 35' tall. R.R. Spike in 10' dia. 26" dia.	53.01

Net Center Line length Sta 60+00 to 90+00 = 3000.0'



DATE 9/15/25
 BY S. J. STEINBERG
 SUPERVISOR
 PROFILE NO. 33977
 NOTE BOOK GRADES CHECKED
 STRUCTURE NOTATIONS CHECKED

Sta. 60+00 2x2x37' Concrete Culu. Reqd. 3:1 Sloping end walls. Place end walls 18" left and 18" right from center line of barrel at discharge. Place flow line of barrel at discharge end 1" below top of 1st and place inlet end 11" below top of 1st. No. 60 Elev. 128.37 Elev. discharge 127.0 Elev. inlet 127.3. Conc. in Culu. 4.80 Cu.Yds. Steel 325 lbs. 2 Type C Guard posts Reqd.

Use 31 Cu.Yds. to build approach at Sta. 72+40

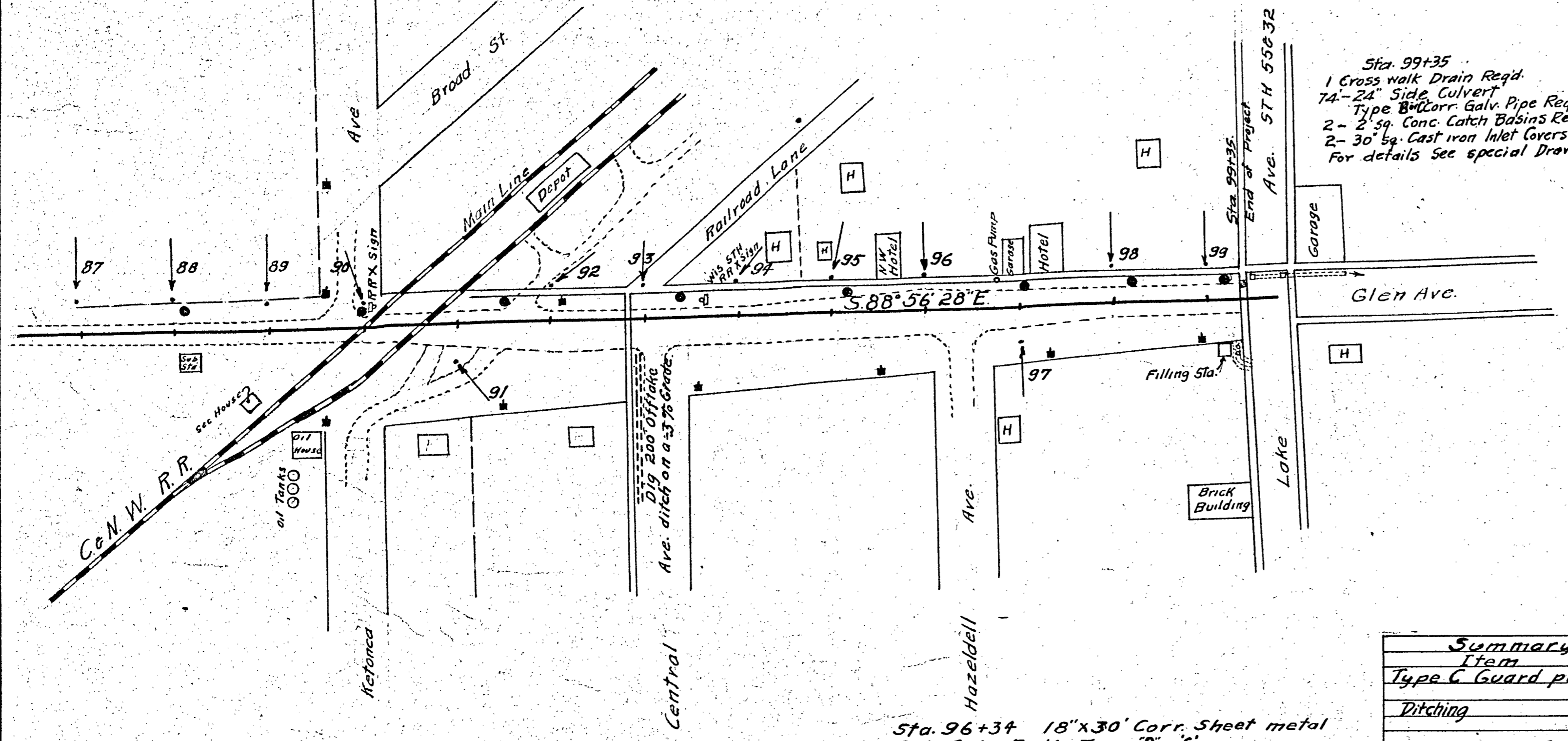
Use 88 Cu.Yds. to build approach at Sta. 72+40

Haul 156 Cu.Yds. from Sta. 80+00 and 81+00 to Sta's 98+00 and 99+35

Sta. 72+40 18x30' Corr Sheet metal side Culu. Reqd. Type B or C

VILLAGE OF CRANDON

PLAN
 NOTE BOOK ALIGNED CHECKED
 NO. 3924a



Sta. 99+35
 1 Cross walk Drain Req'd.
 74-24" Side Culvert
 Type B corr. Galv. Pipe Req'd.
 2-2' sq. Conc. Catch Basins Req'd.
 2-30" sq. Cast iron Inlet Covers Req'd.
 For details See special Drawing.

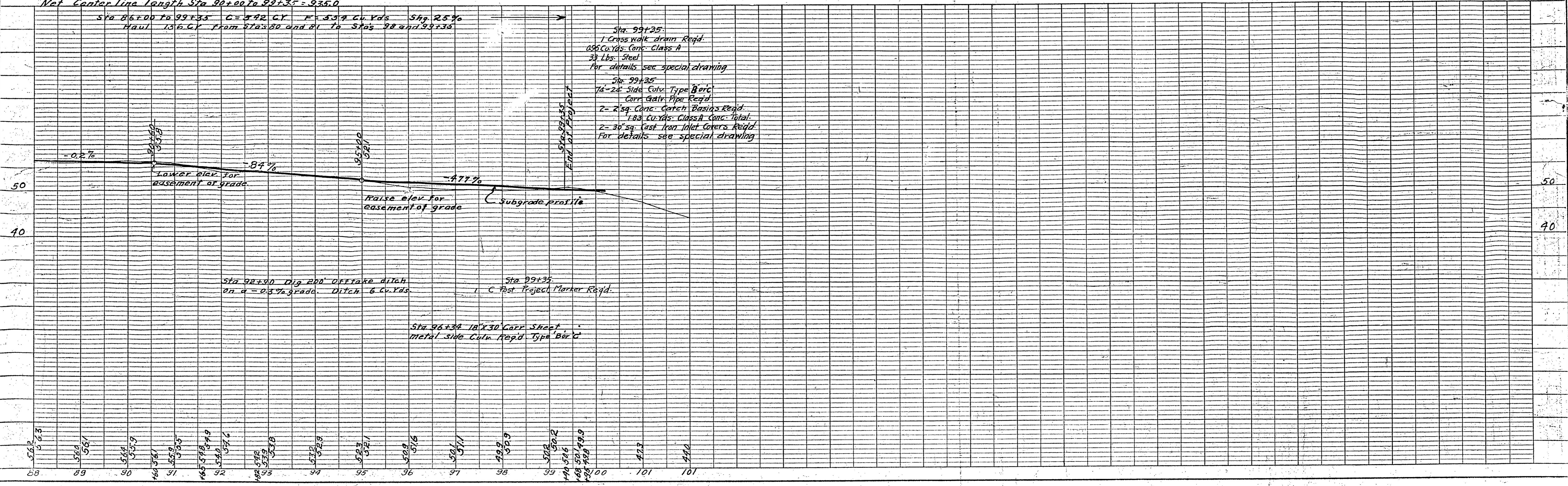
Sta. 96+34 18"x30' Corr. Sheet metal
 Side Culv. Req'd. Type B or C

Item	Sta. to Sta.	Amount	Unit	Totals
Type C Guard post (Proj. Marker)	99+35	1	Post	1
Ditching	92+90 South	6	Cu. Yds.	6

Sta.	Description	Elev.
98+31	R.R. Spike in 12' Elm 3rd tree from Corner 6' from left Side walk	50.67

Net Center line length Sta 90+00 to 99+35 = 935.0

Sta 86+00 to 99+35 C = 542 CY F = 537 Cu. Yds Shg. 25%
 Haul 136 CY From Stas 80 and 81 To Stas 98 and 99+35



Sta. 99+35
 1 Cross walk drain Req'd.
 095 Cu. Yds. Conc. Class A
 38 lbs. Steel
 For details see special drawing

Sta. 99+35
 74-24" Side Culv. Type B or C
 Corr. Galv. Pipe Req'd.
 2-2' sq. Conc. Catch Basins Req'd.
 1.80 Cu. Yds. Class A Conc. Total
 2-30" sq. Cast Iron Inlet Covers Req'd.
 For details see special drawing

Sta 92+90 Dig 200' Offtake ditch
 on a -0.5% grade. Ditch 6 Cu. Yds

Sta 99+35
 1 C Post Project Marker Req'd.

Sta 96+34 18"x30' Corr. Sheet
 metal side Culv. Req'd. Type B or C

PROFILE
 NOTE BOOK GRASSES CHECKED
 NO. 3924b