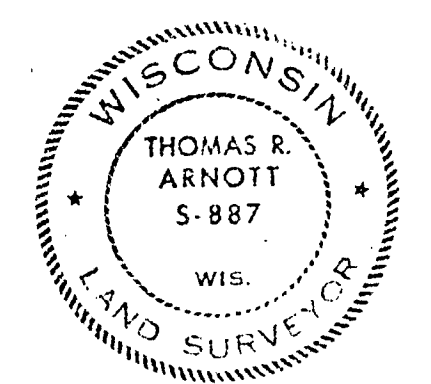
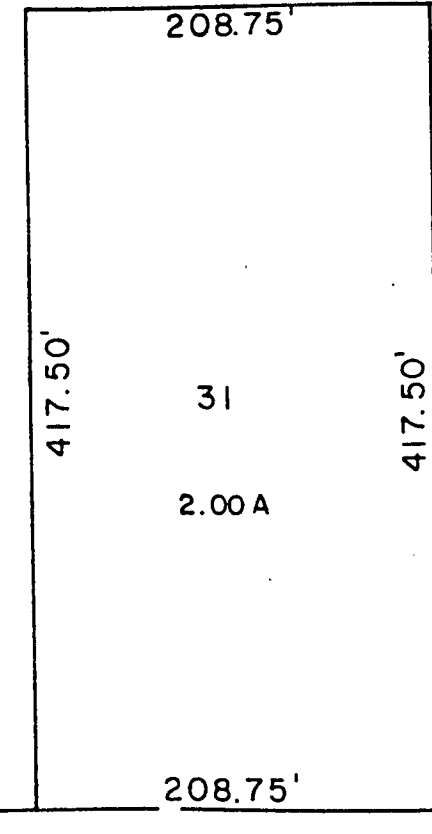


LOTS 1-4 VOL. 2 P. 90
 LOTS 5-8 VOL. 2 P. 91
 LOTS 9-12 VOL. 2 P. 92
 LOTS 13-16 VOL. 2 P. 93
 LOTS 17-20 VOL. 2 P. 94
 LOTS 21-24 VOL. 2 P. 103
 LOTS 25-28 VOL. 2 P. 104
 LOT 29 VOL. 2 P. 105
 LOT 30 VOL. 2 P. 112
 LOT 31 VOL. 2 P. 113

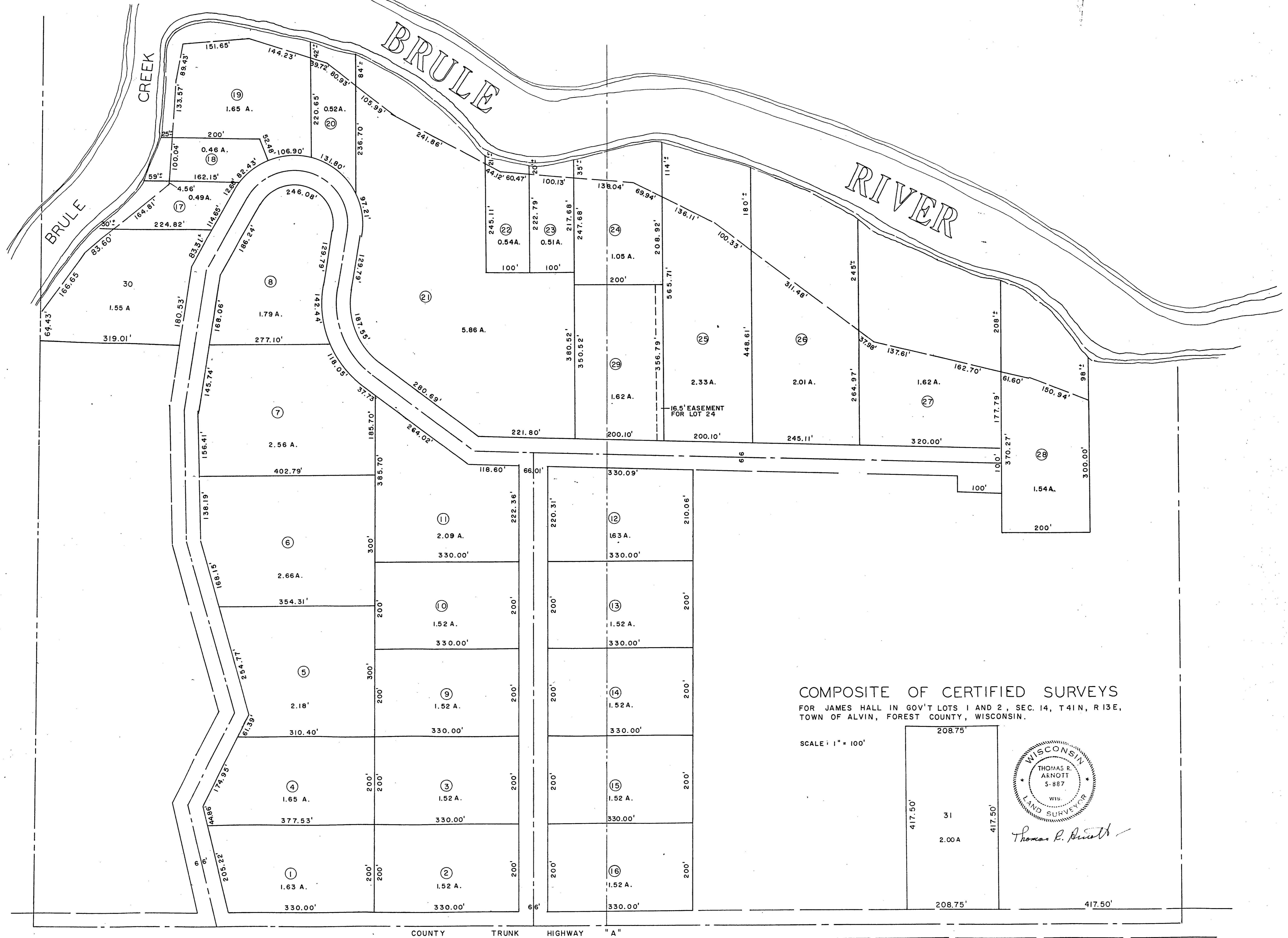
COMPOSITE OF CERTIFIED SURVEYS
 FOR JAMES HALL IN GOV'T LOTS 1 AND 2, SEC. 14, T41N, R13E,
 TOWN OF ALVIN, FOREST COUNTY, WISCONSIN.

SCALE: 1" = 100'



Thomas R. Arnott

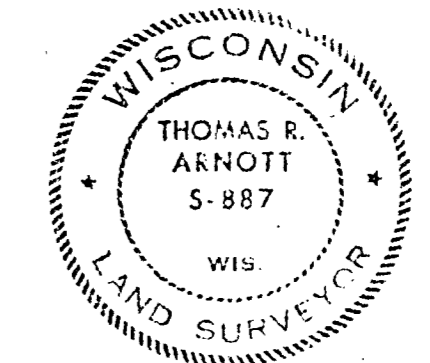
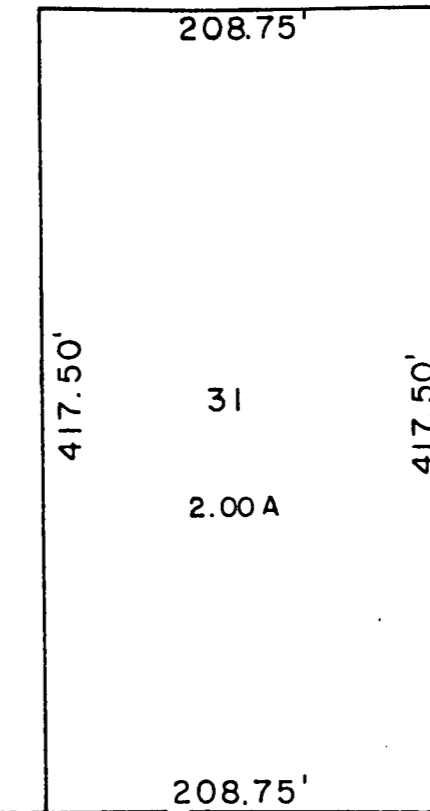
COUNTY TRUNK HIGHWAY "A"



- LOTS 1-4 VOL. 2 P. 90
- LOTS 5-8 VOL. 2 P. 91
- LOTS 9-12 VOL. 2 P. 92
- LOTS 13-16 VOL. 2 P. 93
- LOTS 17-20 VOL. 2 P. 94
- LOTS 21-24 VOL. 2 P. 103
- LOTS 25-28 VOL. 2 P. 104
- LOT 29 VOL. 2 P. 105
- LOT 30 VOL. 2 P. 112
- LOT 31 VOL. 2 P. 113

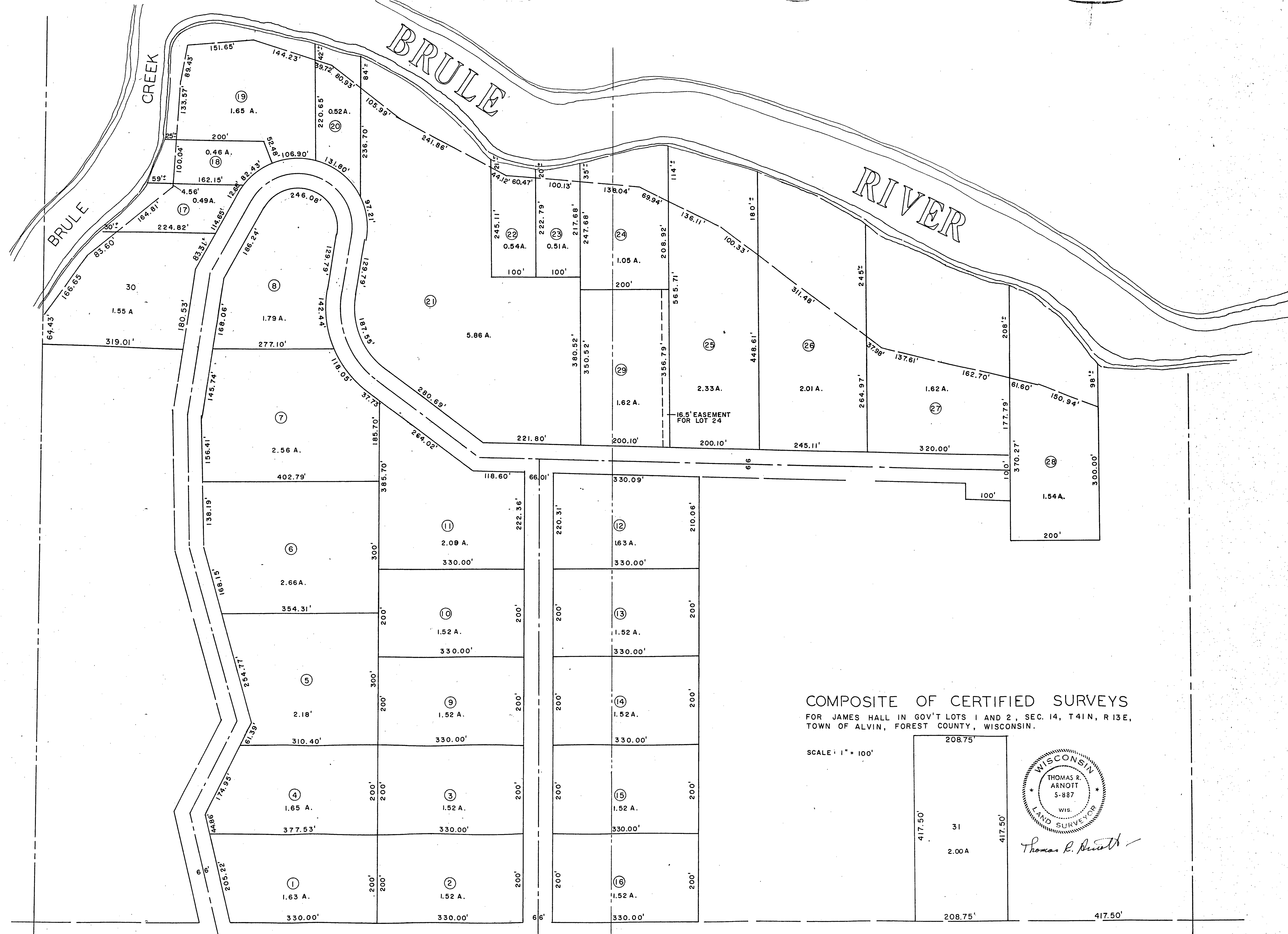
COMPOSITE OF CERTIFIED SURVEYS
 FOR JAMES HALL IN GOV'T LOTS 1 AND 2, SEC. 14, T41N, R13E,
 TOWN OF ALVIN, FOREST COUNTY, WISCONSIN.

SCALE: 1" = 100'



Thomas R. Arnott

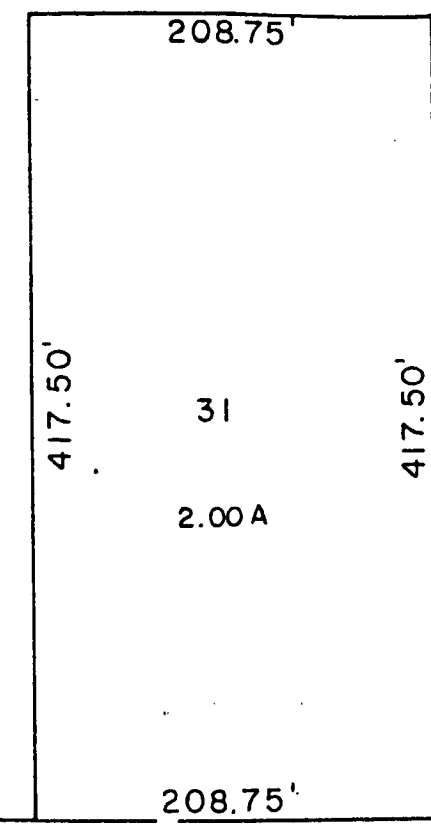
COUNTY TRUNK HIGHWAY "A"



- LOTS 1-4 VOL. 2 P. 90
- LOTS 5-8 VOL. 2 P. 91
- LOTS 9-12 VOL. 2 P. 92
- LOTS 13-16 VOL. 2 P. 93
- LOTS 17-20 VOL. 2 P. 94
- LOTS 21-24 VOL. 2 P. 103
- LOTS 25-28 VOL. 2 P. 104
- LOT 29 VOL. 2 P. 105
- LOT 30 VOL. 2 P. 112
- LOT 31 VOL. 2 P. 113

COMPOSITE OF CERTIFIED SURVEYS
 FOR JAMES HALL IN GOV'T LOTS 1 AND 2, SEC. 14, T41N, R13E,
 TOWN OF ALVIN, FOREST COUNTY, WISCONSIN.

SCALE: 1" = 100'



Thomas R. Arnott