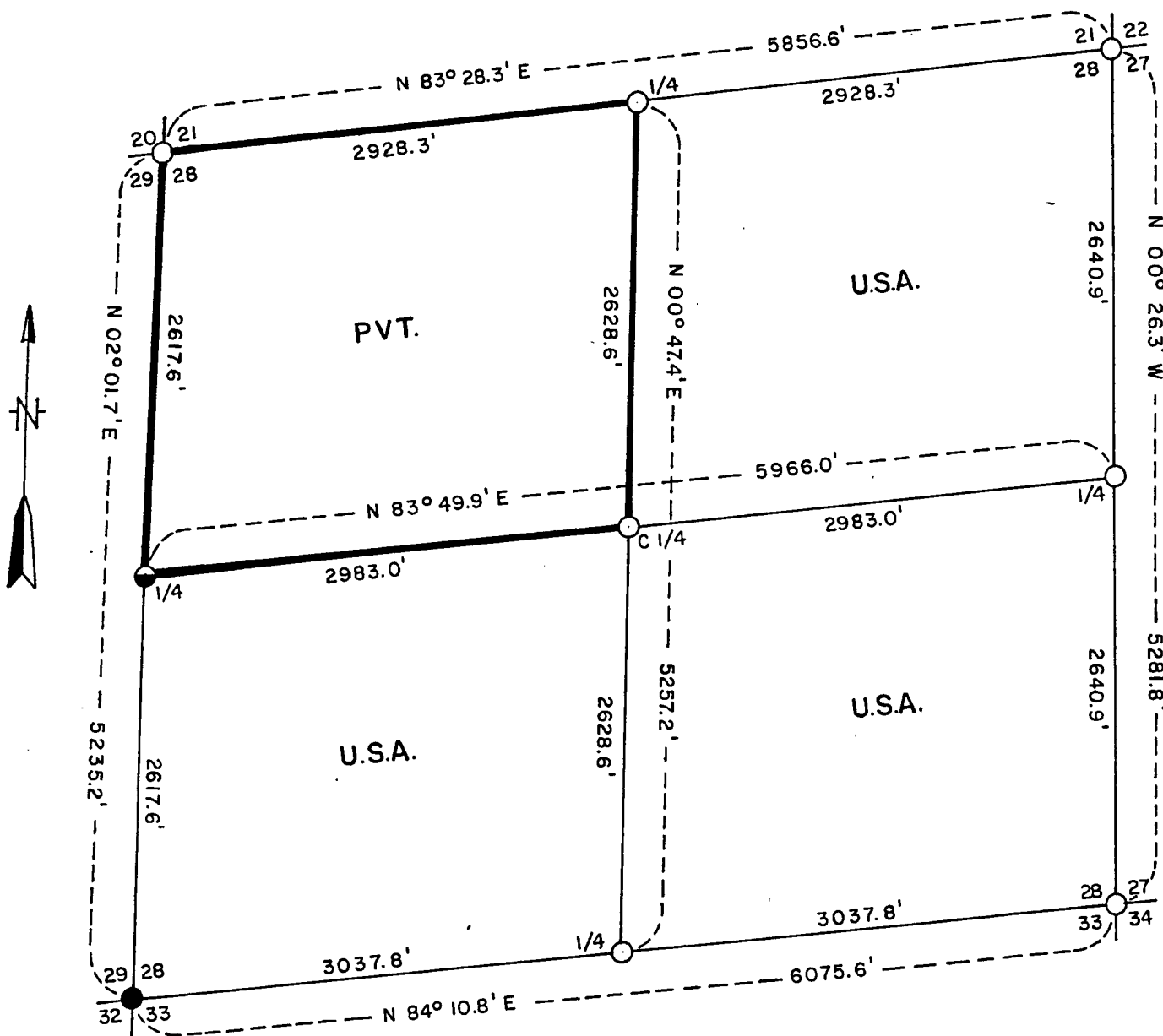


# PLAT OF SURVEY FOR CERTIFIED LAND CORNER RESTORATION & ESTABLISHMENT

Being the Corners for the NE1/4, the SE1/4 and the SW1/4 of Section 28 Township 41 North, Range 14 East, Fourth Principal Meridian FOREST COUNTY WISCONSIN



## LEGEND

- 2 1/2" Diameter Galvanized Pipe 5' Long Filled with Concrete, with Brass Cap.
- 2 1/2" Diameter Aluminum Pipe Monument 3' Long with an Aluminum Cap.
- ◐ 2 1/2" Diameter Aluminum Pipe Monument 5' Long with an Aluminum Cap.
- Boundary Line Marked to Standard.

NOTE: Bearings are Referenced to Solar Observations.

Conversion Factors:  
 Feet to Meters - 0.304801  
 Meters to Feet - 3.280833

Stock No. 26273

Sheet 2 of 4

SURVEY NOTES

This survey of Section 28 was made by the U.S. Department of Agriculture, Forest Service, to establish and mark controlling subdivision corners of U.S. Government land.

The original Government subdivision of this township was made in 1865. Subsequent corner restoration was done in 1965.

The U.S. Government acquired title to the lands in Section 28 in 1881 and 1925.

The section corner common to Sections 27, 28, 33 and 34 was set on line between the section corner common to Sections 21, 22, 27, and 28 and the section corner common to Sections 33 and 34 on the Fourth Correction Line using the adjusted record distance from the section corner common to Sections 21, 22, 27, and 28. All the linear error in this meridian line was proportioned in the east section line of Section 33. From the known and found original corners in this fractional township that were tied in with this survey, I was able to determine that the East line of Section 33 was originally run from North to South closing on the South township line. By setting the East Quarter corner of Section 33 at mid-point and on line between the section corner common to Sections 27, 28, 33 and 34 and the section corner common to Sections 33 and 34, the position of quarter corner then agreed with the natural stream call in the original field notes.

To use double proportionate measurement in locating the position of the section corner common to Sections 27, 28, 33 and 34 would have greatly distorted the adjoining sections because of the excessive distance across the North Section line of Section 33.

CORNERS RECOVERED AND RESTORED1. Section corner common to Sections 20, 21, 28 and 29

Corner is restored by single proportionate measurement between the recovered W 1/4 of Section 21 and the recovered Southwest section corner of Section 28.

Corner references:

|                 |           |           |
|-----------------|-----------|-----------|
| Sugar Maple 6"  | N36°E     | 32.00 Ft. |
| Balsam 11"      | S03°E     | 30.54 Ft. |
| Aspen 13"       | S62°W     | 55.04 Ft. |
| Aspen 11"       | N67°W     | 5.53 Ft.  |
| Steel Sign Post | Northeast | 1.0 Ft.   |

2. Quarter corner between Sections 21 and 28

Corner is restored at mid-point and on line between the Northwest section corner and the Northeast section corner of Section 28.

Corner references:

|                 |          |           |
|-----------------|----------|-----------|
| Sugar Maple 6"  | N84°E    | 86.31 Ft. |
| Sugar Maple 30" | S22°30'E | 29.99 Ft. |
| Steel Sign Post | East     | 1.0 Ft.   |

3. Section corner common to Sections 21, 22, 27, and 28

Corner is restored from evidence of original boundary trees and ties to creek calls.

Corner references recovered:

|                |       |         |
|----------------|-------|---------|
| Basswood Stump | S60°E | 40 Lks. |
| Basswood Clump | N24°E | 11 Lks. |

Stock No. 26273

Sheet 3 of 4

## New corner references:

|                 |           |           |
|-----------------|-----------|-----------|
| Sugar Maple 8"  | N50°E     | 49.88 Ft. |
| Sugar Maple 10" | S 8°E     | 20.67 Ft. |
| Sugar Maple 9"  | S41°W     | 36.71 Ft. |
| Sugar Maple 13" | N29°W     | 49.91 Ft. |
| Steel Sign Post | Southeast | 0.50 Ft.  |

4. Quarter corner between Sections 27 and 28

Corner is restored at mid-point and on line between the Northeast Section corner and the Southeast Section corner of Section 28.

## Corner references:

|                 |       |           |
|-----------------|-------|-----------|
| Hemlock 18"     | N64°E | 16.70 Ft. |
| Maple 9"        | N53°W | 37.30 Ft. |
| Steel Sign Post | South | .50 Ft.   |

5. Section corner common to Sections 27, 28, 33 and 34

Corner position is restored on line between the Northeast Section corner of Section 28 and the Southeast Section corner of Section 33 on adjusted record distance from the Northeast Section corner of Section 28.

## Corner references:

|                 |           |           |
|-----------------|-----------|-----------|
| Sugar Maple 6"  | N70°E     | 4.44 Ft.  |
| Sugar Maple 16" | S44°E     | 35.49 Ft. |
| Sugar Maple 16" | S13°W     | 43.36 Ft. |
| Hemlock 16"     | N 8°W     | 31.24 Ft. |
| Steel Sign Post | Southeast | 0.50 Ft.  |

6. Quarter corner between Sections 28 and 33

Corner position is restored at mid-point and on line between the Southwest and the Southeast Section corners of Section 28.

## Corner references:

|                 |           |           |
|-----------------|-----------|-----------|
| Sugar Maple 20" | N57°E     | 20.93 Ft. |
| Sugar Maple 17" | N15°W     | 39.69 Ft. |
| Steel Sign Post | Southwest | 0.50 Ft.  |

7. Section corner common to Sections 28, 29, 32, and 33

See Certified Land Corner Restoration 5/25/65.

## Corner references recovered:

|                 |           |           |
|-----------------|-----------|-----------|
| Elm 5"          | N36°E     | 60.50 Ft. |
| Elm 5"          | S46°E     | 32.06 Ft. |
| Sugar Maple 12" | N89°W     | 29.51 Ft. |
| 4x4 Wood Post   | Southeast | 2.0 Ft.   |

## New corner references:

|          |       |           |
|----------|-------|-----------|
| Aspen 8" | S52°W | 21.53 Ft. |
|----------|-------|-----------|

8. Quarter corner between Sections 28 and 29

Corner position is restored at mid-point and on line between the Northwest and the Southwest Section corner of Section 28.

## Corner references:

|                 |       |           |
|-----------------|-------|-----------|
| Spruce 6"       | N67°E | 29.81 Ft. |
| White Birch 8"  | S46°E | 25.61 Ft. |
| Steel Sign Post | West  | 0.50 Ft.  |

Stock No. 26273

Sheet 4 of 4

CORNERS ESTABLISHED1. Center Quarter corner of Section 28

Corner position is established at the intersection of the straight lines between opposing quarter corners on the perimeter of Section 28.

## Corner references:

|                 |       |           |
|-----------------|-------|-----------|
| Sugar Maple 10" | N40°E | 16.75 Ft. |
| Sugar Maple 11" | S54°E | 10.78 Ft. |
| Sugar Maple 10" | S64°W | 29.69 Ft. |
| Steel Sign Post | South | 0.75 Ft.  |

SURVEYOR'S AFFIDAVIT

State of Wisconsin)  
County of Forest ) SS

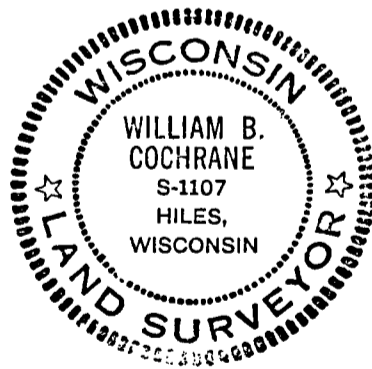
I, William B. Cochrane, Land Surveyor, U.S.D.A. Forest Service, and a registered land surveyor in the State of Wisconsin, hereby certify that I have surveyed and subdivided Section 28, Township 41 North, Range 14 East, Fourth Principal Meridian, State of Wisconsin.

The plat map and the notes herewith are a correct representation of the land surveyed and divided. I have surveyed and subdivided said section in accordance with the rules for the survey of the public lands and with the statutes of the State of Wisconsin.

*William B. Cochrane*

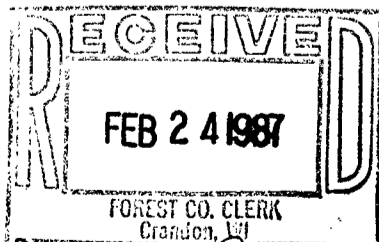
Land Surveyor, U.S.D.A. Forest Service  
R.L.S. State of Wisconsin  
Certificate S-1107

Date of Survey: 1982



Plat ready for filing: *[Signature]*

District Ranger



*Dora C. James*  
Forest Co. Clerk