

Stock No. 26273

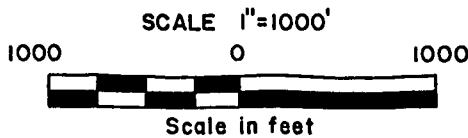
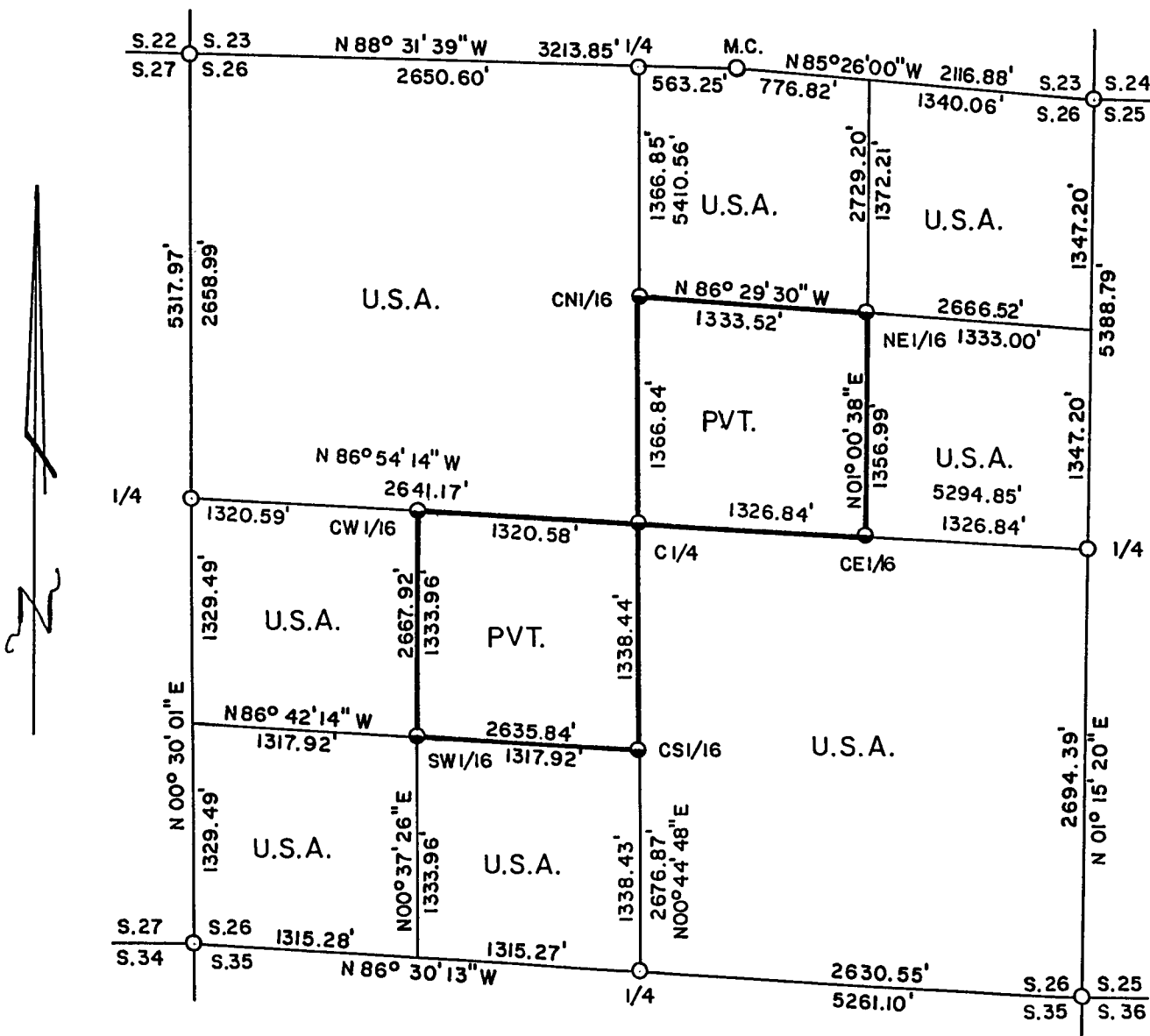
FOREST CO SURVEYOR

FILE # 41426-1991

DATE \_\_\_\_\_ BY \_\_\_\_\_

PLAT OF SURVEY FOR CERTIFIED LAND CORNER RESTORATION AND ESTABLISHMENT

BEING THE CORNERS FOR THE N 1/2-NE 1/4, SE 1/4-NE 1/4, SE 1/4, S 1/2-SW 1/4, NW 1/4-SW 1/4, AND NW 1/4 OF SECTION 26, T. 41N. R. 14E., FOURTH PRINCIPAL MERIDIAN COUNTY OF FOREST, STATE OF WISCONSIN



LEGEND

- 2 1/2 inch diameter aluminum pipe monument, 36" long with an aluminum cap stamped to identify the corner
  - 1 inch diameter aluminum pipe monument, 36" long with an aluminum cap stamped to identify the corner
  - Boundary line marked to Forest Service standards
- NOTE: Bearings are true bearings as referenced to a solar observation which was taken near the Northwest corner of Section 26.

Stock No. 26273

Sheet 2 of 5

SURVEY NOTES

This survey was made by Gary L. Pisoni, a Registered Land Surveyor in the State of Wisconsin, for the U.S.D.A., Forest Service, for the purpose of recovering, restoring, establishing, marking, and perpetuating the corners and boundary lines of U.S. Government Land on the perimeter and within Section 26, Township 41 North, Range 14 East, Fourth Principal Meridian, Forest County, State of Wisconsin, as shown on the plat map herewith.

The Original Government Sub-division of this township was done in 1865 by William E. Daugherty. The township lines were done in 1858 by Artemas Curtis.

The bearings between corner positions are true bearings referenced to a solar observation which was taken near the Northwest corner of Section 26. All distances shown thereon are in feet and hundredths of feet. The control traverse was measured by use of electronic distance measuring equipment.

The accuracy of this survey exceeds the State requirements of 1 in 3000.

The field notes and a copy of the Plat of Survey are on file in the Forest Supervisor's Office at Rhinelander, Wisconsin.

CORNERS RECOVERED AND RESTORED1. Northwest Section Corner

Corner position restored by double proportionate methods between the East meander corner to the East and the Northwest Section corner of Section 27 and between the meander corner to the North and Gaspardo Creek.

Corner References:

Balsam	7"	S 65°E	40.78 feet
Black Cherry	7"	S 21°E	24.82 feet
White Spruce	16"	S 32°W	6.44 feet
White Spruce	8"	S 82°W	23.28 feet
Steel sign post		North	0.67 feet

2. North Quarter Corner

Corner position restored by single proportionate measurements and on line between the East meander corner to the East and the Northwest Section corner of Section 26.

Corner References:

Cedar	13"	S 64°E	72.57 feet
Ash	7"	S 80°W	9.86 feet
Cedar	7"	N 74°W	85.11 feet
Steel sign post		South	0.54 feet

3. East Meander Corner between Sections 23 and 26

Restored meander corner position on the East bank of the Brule River according to the original field notes. Said notes called for the Section line to run across 8.50 chains of open water and then intersect the South bank of the Brule River and set quarter corner position.

Corner References:

Balsam	6"	N 63°E	26.45 feet
White Spruce	12"	S 28°E	2.72 feet
White Spruce	13"	S 26°W	23.68 feet
Steel sign post		West	0.82 feet

Stock No. 26273

Sheet 3 of 5

**4. Northeast Section Corner**

Corner position restored by using single proportionate measurements and on line between the East meander corner between Sections 23 and 26 located on the East bank of the Brule River and the Northeast Section corner of Section 25.

## Corner References:

Sugar Maple	7"	N 75°E	34.87 feet
Sugar Maple	5"	S 33°E	37.17 feet
Red Maple	8"	S 17°W	15.43 feet
Hemlock	11"	N 44°W	34.06 feet
Steel sign post		S 65°W	0.70 feet

**5. East Quarter Corner**

Corner position restored at midpoint and on line between the Northeast and Southeast Section corners of Section 26.

## Corner References:

Sugar Maple	6"	N 16°E	8.50 feet
Sugar Maple	8"	N 64°E	24.51 feet
Sugar Maple	6"	S 50°E	11.83 feet
Sugar Maple	8"	S 62°W	14.05 feet
Steel sign post		North	1.46 feet

**6. Southeast Section Corner**

Corner position restored from acceptance of a found yellow birch stump and a metal location tag located on an 18" maple as recorded and described on a U.S.F.S. 874 form, dated 8/9/34.

## Corner References:

Sugar Maple	9"	N 49°E	11.18 feet
Sugar Maple	9"	S 02°W	25.46 feet
Sugar Maple	8"	N 86°W	3.38 feet
Sugar Maple	8"	N 32°W	20.50 feet
Steel sign post		North	0.69 feet

**7. South Quarter Corner**

Corner position restored at midpoint and on line between the Southeast and Southwest Section corners of Section 26.

## Corner References:

Balsam	8"	N 44°W	17.65 feet
Balsam	9"	N 11°E	19.12 feet
Black Cherry	7"	N 79°E	14.97 feet
White Spruce	13"	S 84°E	61.24 feet
Steel sign post		West	0.64 feet

**8. Southwest Section Corner**

Corner position restored by using double proportionate methods between Gaspardo Creek and the meander corner between Sections 22 and 23 and between the Southwest Section corner of Section 27 and the Southeast Section corner of Section 26.

## Corner References:

White Spruce	9"	N 39°E	43.36 feet
Tamarack	10"	S 10°E	18.49 feet
Tamarack	12"	S 33°W	27.71 feet
White Spruce	14"	N 54°W	9.63 feet
Steel sign post		East	0.53 feet

**9. West Quarter Corner**

Corner position restored at midpoint and on line between the Northwest and Southwest Section corners of Section 26.

## Corner References:

Steel sign post		North	0.75 feet
Steel sign post		S 60°E	0.93 feet

Stock No. 26273

Sheet 4 of 5

CORNERS ESTABLISHED1. Center North Sixteenth Corner

Corner position established at midpoint and on line between the North quarter corner and the Center quarter corner.

Corner References:

White Spruce	12"	S 83°E	31.06 feet
White Spruce	9"	S 39°W	28.51 feet
Steel sign post		North	0.73 feet

2. Northeast Sixteenth Corner

Corner position established at the intersection of the straight lines between opposing sixteenth corner positions on the perimeter of the Northeast quarter of Section 26.

Corner References:

White Spruce	6"	N 14°E	18.35 feet
White Spruce	6"	N 84°W	35.91 feet
Steel sign post		N 30°W	0.61 feet

3. Center East Sixteenth Corner

Corner position established at midpoint and on line between the East quarter corner and the Center quarter corner.

Corner References:

White Spruce	8"	N 18°W	20.04 feet
White Spruce	11"	S 86°W	39.66 feet
Steel sign post		S 45°E	0.70 feet

4. Center Quarter Corner

Corner position established at the intersection of the straight lines between opposing quarter corner positions on the perimeter of the section.

Corner References:

White Spruce	11"	N 12°W	17.25 feet
White Spruce	8"	S 45°E	18.54 feet
Steel sign post		S 06°W	0.70 feet

5. Center West Sixteenth Corner

Corner position established at midpoint and on line between the West quarter corner and the Center quarter corner.

Corner References:

Aspen	3"	S 78°W	21.09 feet
Balsam	5"	S 61°E	53.50 feet
Steel sign post		North	0.66 feet
Steel sign post		S 82°E	0.60 feet

6. Southwest Sixteenth Corner

Corner position established at the intersection of the straight lines between opposing sixteenth corner positions on the perimeter of the Southwest quarter of Section 26.

Corner References:

Red Maple(double)	8"	S 88°E	79.60 feet
White Spruce	16"	S 60°E	76.63 feet
Steel sign post		South	0.55 feet

Stock No. 26273

Sheet 5 of 5

7. Center South Sixteenth Corner

Corner position established at midpoint and on line between the South quarter corner and the Center quarter corner.

## Corner References:

Sugar Maple	6"	N 49°E	7.11 feet
Sugar Maple	9"	S 27°W	7.24 feet
Steel sign post		South	0.60 feet

SURVEYOR'S CERTIFICATE

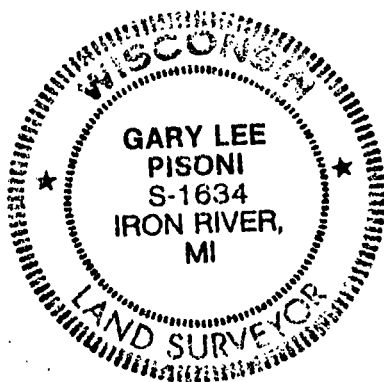
State of Wisconsin)ss  
County of Forest)

I, Gary L. Pisoni, a Cadastral Surveyor, and a Registered Land Surveyor in the State of Wisconsin, hereby certify that I have surveyed and sub-divided Section 26, Township 41 North, Range 14 East, Fourth Principal Meridian, State of Wisconsin.

The plat map and survey notes herewith are a correct representation of the land surveyed and divided. I have surveyed and sub-divided said section in accordance with the rules for the survey of public lands and with the statutes of the State of Wisconsin.

Date of Survey: 1991

*Gary L. Pisoni*  
\_\_\_\_\_  
Cadastral Surveyor  
R.L.S. State of Wisconsin  
Certificate S-1634



Survey requested by; \_\_\_\_\_

*M. Carr*  
\_\_\_\_\_  
District Ranger

*10/2/92*  
\_\_\_\_\_  
Date

