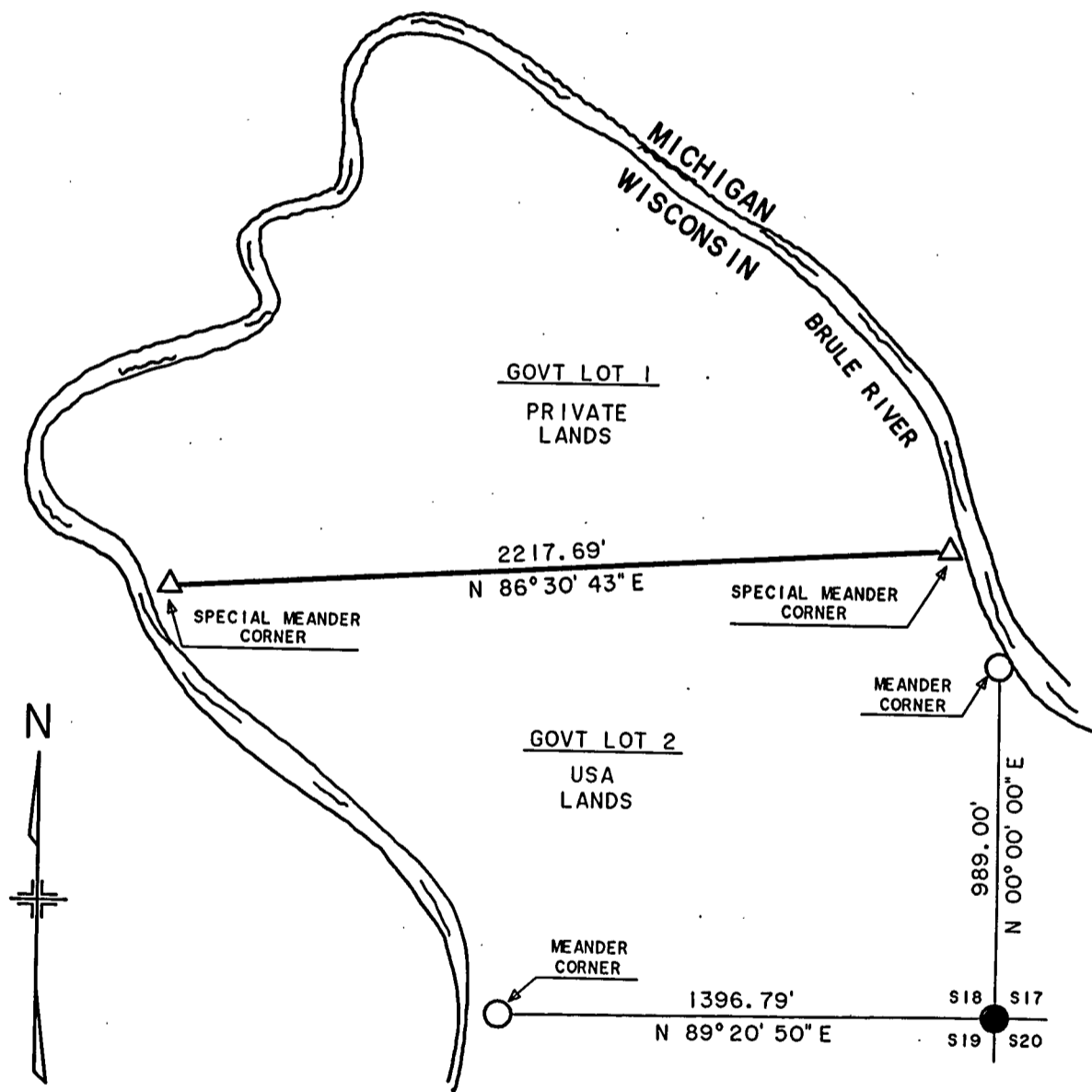
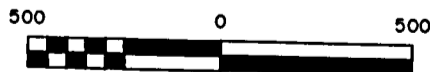


PLAT OF SURVEY FOR CERTIFIED LAND CORNER RESTORATION AND ESTABLISHMENT  
 BEING THE SPECIAL MEANDER CORNERS SET ON EACH END OF THE LINE BETWEEN GOVERNMENT LOTS 1 AND 2 IN SECTION 18, TOWNSHIP 41 NORTH, RANGE 14 EAST  
 FOURTH PRINCIPAL MERIDIAN, FOREST COUNTY STATE OF WISCONSIN



SCALE IN FEET



1 INCH = 500 FEET

LEGEND

- - 2 1/2 inch diameter aluminum pipe monument, 36 inches long with an aluminum cap stamped to identify the corner.
- △ - 1 inch diameter aluminum pipe monument, 60 inches long with an aluminum cap stamped to identify the corner.
- - 2 1/2 inch diameter galvanized iron pipe, 60 inches long with a brass cap stamped to identify the corner.
- - Boundary line marked to Forest Service Standards



Stock No. 26273

SECTION 18, TOWNSHIP 41 NORTH, RANGE 14 EAST

Page 2 of 4

SURVEY NOTES

This survey was made by the U.S. Department of Agriculture, Forest Service for the purpose of recovering, restoring, establishing, marking, and perpetuating the corners and boundary lines of U.S. Government land on the perimeter and within Section 18, Township 41 North, Range 14 East, Fourth Principal Meridian, Forest County, State of Wisconsin as shown on the Plat map herewith.

The U.S. Government land within Section 18 was acquired in 1935.

The bearings between corner positions are true bearings determined by Global Positioning Satellite observations. The accuracy of this survey exceeds the State of Wisconsin requirement for closure of 1 part in 3,000. Corners recovered or established by this survey are marked as described in the map legend. Each monumented corner is referenced to blazed, scribed, painted and tagged bearing trees. Tie bearings to the trees are magnetic and corrected for declination.

The field notes and a copy of the Plat of Survey are on file at the Forest Service Supervisor's Office in Rhinelander, WI and at the District Ranger's Office in Florence, WI.

CORNERS RECOVERED AND RESTORED1. Southeast Section Corner

Corner position recovered and restored from original survey evidence in 1964 by Jean Resvick, U.S. Forest Service Land Surveyor. Recorded in Book 2 of Plats, Page 24 as Document No. 90018.

Corner references recovered:

Jack Pine	16"	S58°E	17.85 ft
Spruce	stump	S25°W	19.75 ft
Jack Pine	10"	N50°W	37.45 ft
W. Pine	dead	N01°W	42.70 ft
wood sign post		Northwest	1.00 ft

New corner references:

Jack Pine	11"	N35°E	25.23 ft
Spruce	7"	S24°W	21.28 ft

2. Meander Corner between Sections 18 and 19

Corner position recovered and restored from original survey evidence in 1964 by Jean Resvick, U.S. Forest Service Land Surveyor. Recorded in Book 2 of Plats, Page 24 as Document No. 90018.

Corner references recovered:

Spruce	14"	N35°E	18.77 ft
Ash	stump	S16°E	2.50 ft
Bank of Brule River	West	36 feet	
Wood sign post		Northwest	1.00 ft

New corner references:

Balsam	4"	S33°E	6.70 ft
--------	----	-------	---------

3. Meander Corner between Sections 17 and 18

Corner position set at the high water mark on the right bank of the Brule River North of the Southeast section corner of section 18.

Corner references:

R. Pine	6"	N66°W	32.13ft
Spruce	7"	N43°W	34.35ft
Steel sign post		North	0.96ft
Waters edge		North	23.00ft



Stock No. 26273

SECTION 18, TOWNSHIP 41 NORTH, RANGE 14 EAST

Page 3 of 4

CORNERS ESTABLISHED4. Special Meander Corner.

Corner position set at the high water mark on the right bank of the Brule River and on the West end of the line between Government Lots 1 and 2.

Corner references:

Black Ash	10"	N39°E	105.45 ft
Elm	17"	S58°E	61.48 ft
Brule River		West	10.00 ft
Steel sign post		Northwest	1.00 ft

5. Special Meander Corner

Corner position set at the high water mark on the right bank of the Brule River and on the East end of the line between Government Lots 1 and 2.

Corner references:

Black Cherry	8"	S42°W	73.27 feet
Balsam	10"	S86°W	63.88 feet
Brule River		East	62.56 feet
Steel sign post		East	1.00 feet



Stock No. 26273

SURVEYOR'S AFFIDAVIT

State of Wisconsin )  
 )  
 County of Forest )

I, William B. Cochrane, Land Surveyor, U.S. Forest Service and a Registered Land Surveyor in the State of Wisconsin, hereby certify that I have surveyed and subdivided Section 18, Township 41 North, Range 14 East, Fourth Principal Meridian, State of Wisconsin. I have surveyed and subdivided said section in accordance with the rules for the survey of the public lands and statutes of the State of Wisconsin.

The boundary line between Government Lots 1 and 2 was restored accepting by the existing East-West fence line and testimony from Tony Petroff, a long time local resident, that the fence line had been initially located on the line between Government Lots 1 and 2 over fifty years ago. Our survey ties to the existing fence line indicated that the fence had been surveyed and located on a straight line at one time.

The geodetic state plane coordinates for the controlling corners are as follows:

Section corner common to sections 17, 18, 19 & 20:	315546.7082	N	2275772.9332	E
Meander corner between sections 18 & 19:	315530.7923	N	2274376.2335	E
Meander corner between sections 17 & 18:	316535.7082	N	2275772.9332	E
West special meander corner between Govt Lots 1 & 2:	316720.9393	N	2273420.1730	E
East special meander corner between Govt Lots 1 & 2:	316855.8699	N	2275633.7544	E

The plat map and survey notes herewith are a correct representation of the land surveyed and divided

William B. Cochrane  
 Land Surveyor, U.S. Forest Service  
 R..L.S. State of Wisconsin  
 Certificate S-1107

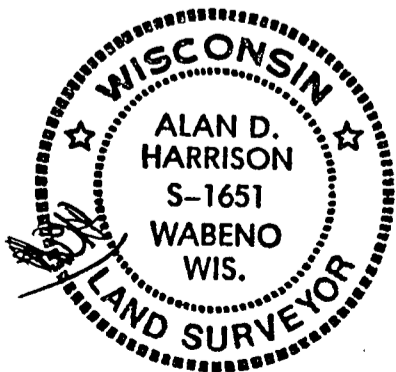
Date of Survey: 1996

Survey requested by

*C. B. J. Petroff*  
 District Ranger  
 Date 12/13/97

NOTICE

William B. Cochrane passed away prior to filing of this plat. I Alan Harrison a registered Land Surveyor, U.S. Forest Service and a registered Land Surveyor in the State of Wisconsin, have reviewed the field work, office computations, and correspondence pertaining to this survey and am signing in his behalf.



*Alan D. Harrison*

Alan Harrison  
 Land Surveyor, U.S. Forest Service  
 R. L. S. State of Wisconsin  
 Certificate #S-1651

