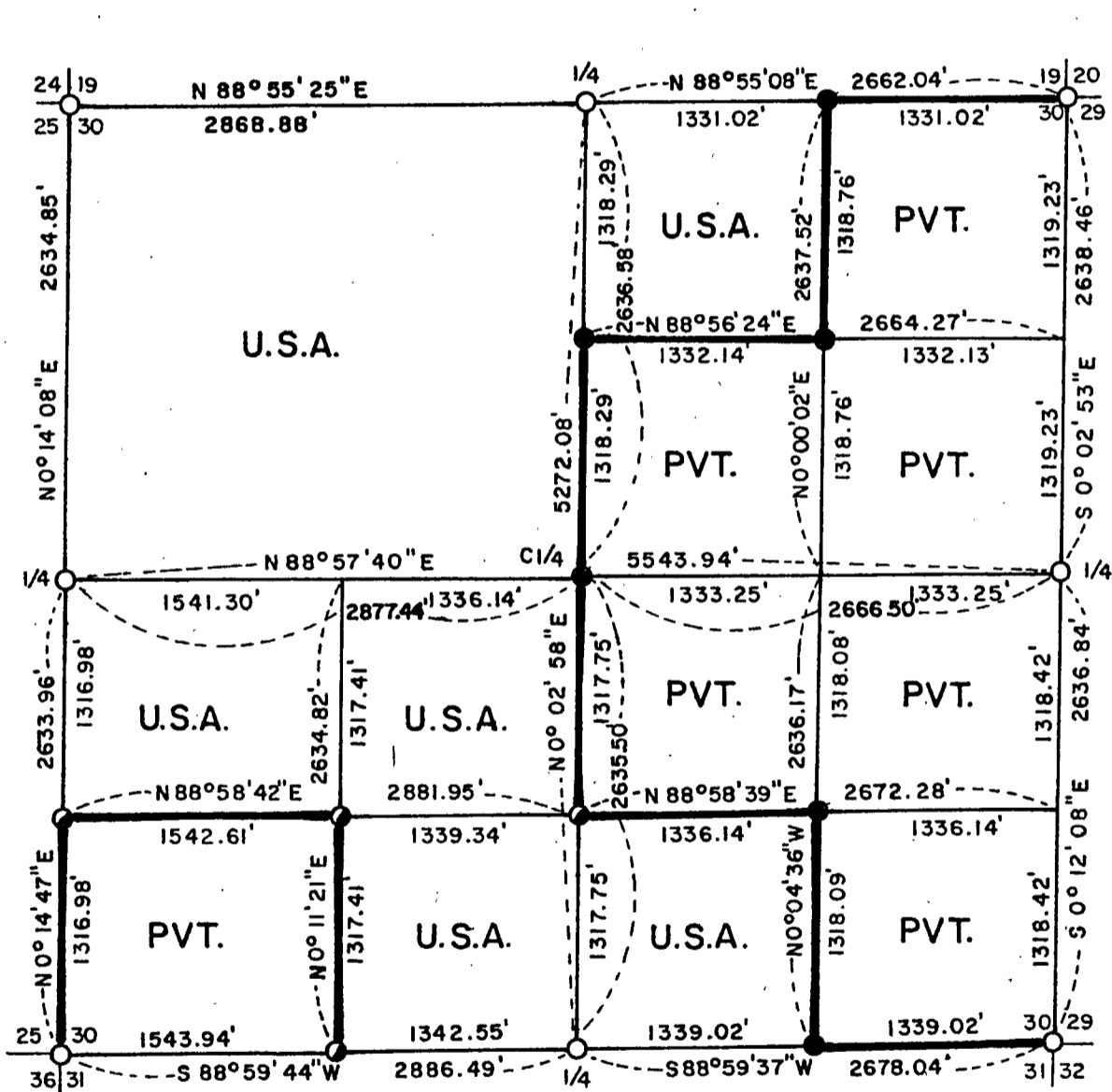


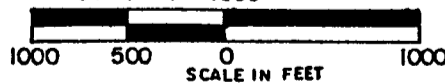
PLAT OF SURVEY FOR CERTIFIED LAND CORNER RESTORATION AND ESTABLISHMENT

BEING THE CORNERS FOR THE NW1/4 OF THE NE1/4, THE SW1/4 OF THE SE1/4, THE E1/2 OF THE SW1/4, THE NW1/4 OF THE SW1/4, THE NW1/4, SECTION 30, T41N, R13E, FOURTH PRINCIPLE MERIDIAN.

COUNTY OF FOREST, STATE OF WISCONSIN



SCALE 1" = 1000'



LEGEND

- Boundary line marked to standard.
- 2 1/2 inch diameter aluminum pipe monument, 36 inches long with an aluminum cap stamped to identify the corner.
- 2 1/2 inch diameter aluminum pipe monument, 60 inches long with an aluminum cap stamped to identify the corner.
- General Land Office Dependent Resurvey Monuments.

NOTE: Bearings are referenced to solar observations.

CONVERSION FACTORS:

FEET TO METERS - 0.304801
 METERS TO FEET - 3.280833

Stock No. 26273

SHEET 2 OF 6

SURVEY NOTES

This survey was made by William Immich, a Registered Land Surveyor in the State of Wisconsin, for the U.S. Department of Agriculture, Forest Service, to establish and mark controlling subdivision corners of U.S. Government Land in Section 30, Township 41 North Range 13 East, Fourth Principal Meridian, Forest County, Wisconsin.

The Original Government survey of this township was made in 1860 and 1865.

A dependent re-survey was made by the U.S. Department of the Interior General Land Office in 1942. The corners of the dependent re-survey of the perimeter of Section 30 were recovered as control for the subdivision survey of Section 30.

The U.S. Government acquired title to lands in Section 30 in 1934, 1936, 1940, and 1949.

The bearings between corner positions are true bearings as determined by reference to solar observations. The accuracy of this survey exceeds the State requirements of 1 in 3000.

The field notes and a copy of the Plat of Survey are on file in the Forest Supervisor's office in Rhinelander, Wisconsin.

CORNERS RECOVERED AND RESTORED1. Section corner common to Section 19, 30, 24 and 25.

Corner is marked by a brass capped iron post, 2" diameter 1942 dependent re-survey.

Recovered corner reference:

Maple	16"	N 77° E	47.40 feet
Hemlock	12"	S 67½° E	44.30 feet
Maple	11"	S 52° W	0.60 feet
Hemlock	14"	N 49° W	65.00 feet
Steel sign and post		N 10° W	1.4 feet

2. Quarter corner between Sections 19 and 30.

Corner is marked by a brass capped iron post, 2" diameter, 1942 dependent re-survey.

New corner reference:

White pine	9"	N 24½° E	31.60 feet
White pine	8"	S 27° E	13.28 feet
White pine	6"	S 70° W	11.10 feet
White pine	8"	N 61½° W	25.05 feet
Steel sign and post		North	0.9 feet

3. Section corner common to Sections 19, 20, 29 and 30.

Corner is marked by a brass capped concrete monument, 1942 dependent re-survey.

Recovered corner reference:

Maple	20"	S 80½° W	37.62 feet
Hemlock	18"	S 70° E	66.66 feet
Maple stump	20"	N 54½° W	64.68 feet
White pine *	7"	N 36° E	17.00 feet
White pine *	7"	S 57° E	48.10 feet
Steel sign and post		Northeast	0.35 feet

Stock No. 26273

SHEET 3 OF 6

4. Quarter corner common to Sections 29 and 30.

Corner is marked by a brass capped concrete monument, 1942 dependent re-survey.

New corner reference:

⊕ Stock Road		North	80'
--------------	--	-------	-----

Recovered corner reference:

Ash	20"	N 85 3/4° E	37.20'
Maple	22"	N 52 3/4° W	12.50'
Wood post and sign		East	1.3'

5. Section corner common to Sections 29, 30, 31, 32.

Corner is marked by a brass capped concrete monument, 1942 dependent re-survey.

New corner references:

Maple	13"	S 72° W	8.65'
-------	-----	---------	-------

Recovered corner references:

Maple	15"	N 21 1/2° W	10.00'
Maple	21"	N 86 3/4° E	50.20'
Maple	20"	S 54° E	78.50'
Wood post and sign		Southeast	1.4'

6. Quarter corner common to Sections 30 and 31.

Corner is marked by a brass capped concrete monument, 1942 dependent re-survey.

New corner references:

Balsam	2"	N 22° E	13.82'
Balsam	3"	N 64° W	25.94'
⊕ logging road		West	121'
Steel sign and post		North	0.5'

7. Section corner common to Sections 25, 30, 31, 36.

Corner is marked by a brass capped concrete monument with steel form on outside, 1942 dependent re-survey.

Recovered corner reference:

Tamarack	12"	N 61 1/2° E	57.40'
Tamarack	8"	S 1 3/4° E	226.20'
Tamarack	12"	S 74 1/2° W	81.10'
Tamarack	13"	N 47 1/2° W	76.70'

New corner reference:

Steel sign and post		Southwest	1.1'
---------------------	--	-----------	------

Stock No. 26273

SHEET 4 OF 6

8. Quarter corner common to Sections 25 and 30.

Corner is marked by a brass capped iron post , 2" diameter
1942 dependent re-survey.

New corner references:

White pine	4"	S 76°W	47.15'
Spruce	4"	S 4½°W	87.91'
Spruce	7"	S 8½°E	84.00'
Steel sign and post		North	0.70'

9. East sixteenth between Sections 19 and 30.

Corner established at midpoint and on line between the North
quartercorner and the Northeast corner of Section 30.

Corner references:

Spruce	8"	N 18°W	37.53'
Aspen	8"	S 82°E	14.96'
Maple	10"	S 27°W	16.24'
Steel sign and post		West	1.0'

10. Center north sixteenth corner.

Corner established at midpoint and on line between the North
quarter corner and the center quarter corner of Section 30.

Corner references:

Balsam	10"	N 58°W	22.80'
Balsam	9"	N 41°E	17.14'
Balsam	10"	S 66°E	31.43'

11. Northeast sixteenth corner.

Corner established at the intersection of the straight lines
between opposing sixteenth corner positions on the perimeter
of the Northeast quarter of Section 30.

Corner references:

Maple	6"	N 31°W	10.88'
Twin maple	8"	N 26°E	16.16'
Maple	9"	S 52°E	36.96'
Steel sign and post		Northwest	1.0'

12. Center quarter corner.

Corner established at the intersection of the straight lines
between opposing quarter corners on the perimeter of Section
30, as surveyed by the dependent re-survey.

Corner references:

Maple	4"	N 59°E	12.94'
Cherry	8"	S 10°E	34.40'
Maple	6"	S 77°W	12.39'
Steel sign and post		West	1.0'

Stock No. 26273

SHEET 5 OF 6

13. South sixteenth between Sections 25 and 30.

Corner established at midpoint and on line between the West quarter corner and the Southwest corner of Section 30.

Corner references:

Spruce	9"	N 3 ⁰ E	52.01'
Spruce	12"	S 26 ⁰ E	16.12'
Balsam	9"	S 30 ⁰ W	9.75'
Steel sign and post		West	0.7'

14. Southwest sixteenth corner.

Corner established at the intersection of the straight lines between opposing sixteenth corner positions on the perimeter of the Southwest quarter of Section 30.

Corner references:

Tamarack	5"	N 4 ⁰ E	9.89'
Tamarack	5"	S 32 ⁰ E	51.35'
Tamarack	5"	S 35 ⁰ W	37.31'
Steel sign and post		Northeast	0.85'

15. Center south sixteenth corner.

Corner established at midpoint and on line between the South quarter corner and the center quarter corner of Section 30.

Corner references:

Tamarack	6"	N 32 ⁰ E	53.15'
Tamarack	3"	S 86 ⁰ W	59.69'
Steel sign and post		Southwest	0.85'
No others near.			

16. Southeast sixteenth corner.

Corner established at the intersection of the straight lines between opposing sixteenth corner positions on the perimeter of the Southeast quarter of Section 30.

Corner references:

Spruce	9"	N 36 ⁰ W	27.45'
Balsam	7"	S 62 ⁰ W	18.87'
Balsam	9"	S 79 ⁰ E	42.78'
Steel sign and post		Southwest	0.67'

17. East sixteenth corner between Sections 30 and 31.

Corner established at midpoint and on line between the South quarter corner and the Southeast corner of Section 30.

Corner references:

Maple	12"	N 54 ⁰ W	40.70'
Maple	7"	N 25 ⁰ E	16.77'
Balsam	7"	S 37 ⁰ E	40.50'
Steel sign and post		Southwest	1.05'

Stock No. 26273

SHEET 6 OF 6

18. West sixteenth corner between Sections 30 and 31.

Corner established on line between the South quarter corner
And the Southwest corner of Section 30 twenty proportionate
chains west of the South quarter corner.

Corner references:

Tamarack	4"	N 72°W	41.23'
Tamarack	4"	S 12°E	46.00'
Steel sign and post		Southwest	0.9'
No others near			

SURVEYORS AFFIDAVIT

State of Wisconsin)

ss

County of Vilas)

I, William Immich, a Cadastral Surveyor, and a registered land
surveyor in the State of Wisconsin, hereby certify that I have
surveyed and subdivided Section 30, Township 41 North, Range 13
East, Fourth Principal Meridian, State of Wisconsin.

The plat and survey notes herewith are a correct representation
of the lands surveyed and divided. I have surveyed and subdivided
said section in accordance with the rules for the survey of the
public lands and with the statutes of the State of Wisconsin.



Date of Survey 1983

William Immich
Cadastral Surveyor
R.L.S. State of Wisconsin
Certificate S-1383

