

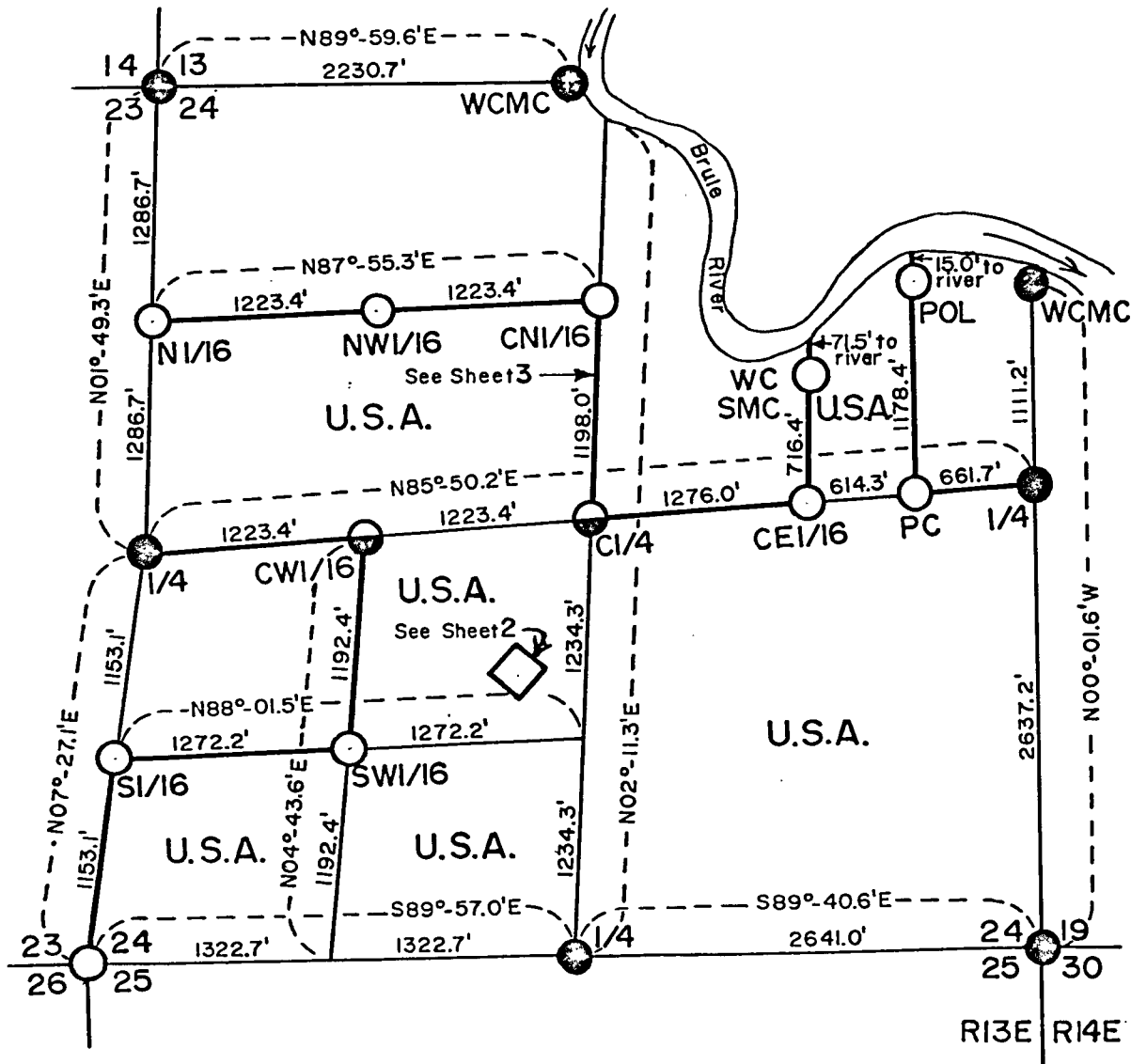
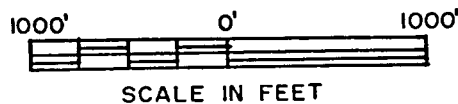
FOREST CO SURVEYOR
 FILE # 41324-1997
 DATE _____ BY _____

COPY

Sheet 1 of 9

PLAT OF SURVEY U. S. GOVERNMENT LAND

Being The SE1/4, SW1/4SW1/4, E1/2SW1/4, S1/2NW1/4 and West Part
 of Government Lot 1, Section 24, Township 41 North, Range 13 East
 Fourth Principal Meridian
 FOREST COUNTY, WISCONSIN



LEGEND

○ — Corner position marked by a 2 inch inside diameter, 3 foot long, concrete filled, galvanized iron pipe with a 3 inch diameter brass cap, stamped to identify corner.

● — Corner position marked by a 2 inch inside diameter, 5 foot long, concrete filled, galvanized iron pipe with a 3 inch diameter brass cap, stamped to identify corner.

● — General Land Office monument, 1942 survey.

U.S.A. — U. S. Government Land.

PC — Property Corner.

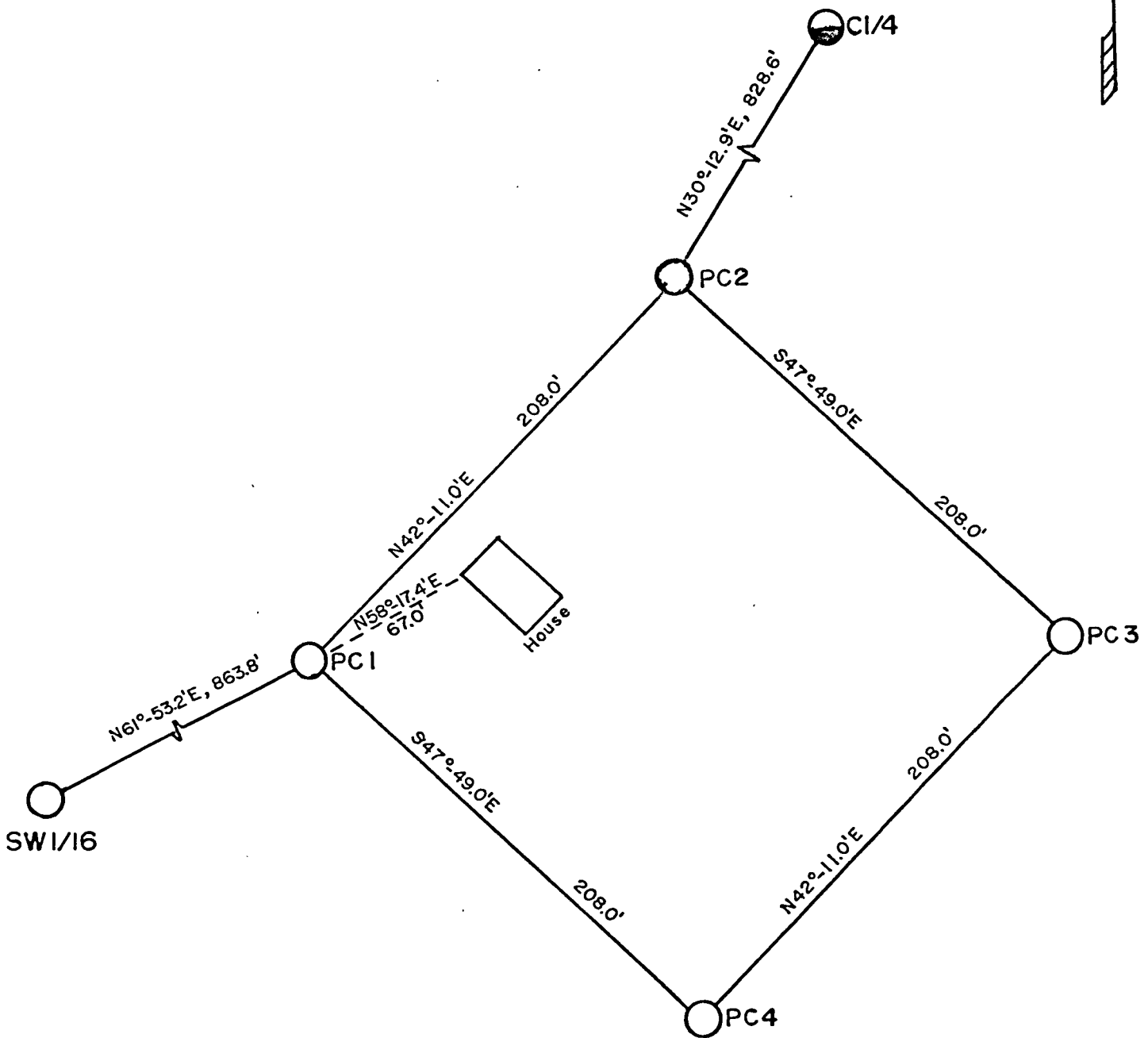
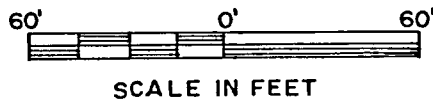
POL — Point on line.

— — Property line marked and posted.

COPY

PLAT OF SURVEY U. S. GOVERNMENT LAND

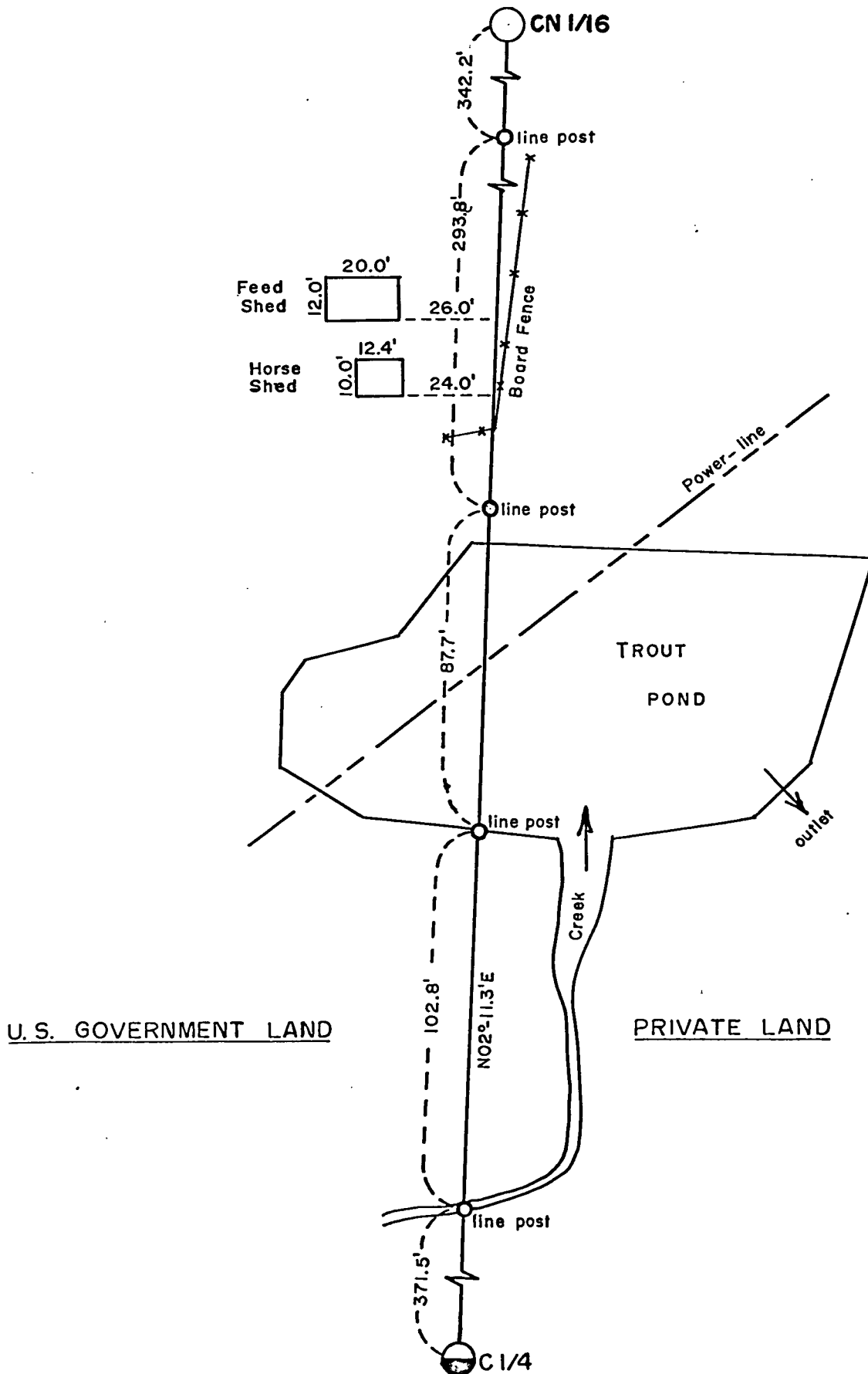
Being The SE1/4, SW1/4SW1/4, E1/2SW1/4, S1/2NW1/4 and West Part
of Government Lot 1, Section 24, Township 41 North, Range 13 East
Fourth Principal Meridian
FOREST COUNTY, WISCONSIN



COPY

PLAT OF SURVEY U. S. GOVERNMENT LAND

Being The SE1/4, SW1/4SW1/4, E1/2SW1/4, S1/2NW1/4 and West Part
of Government Lot 1, Section 24, Township 41 North, Range 13 East
Fourth Principal Meridian
FOREST COUNTY, WISCONSIN



COPY

Sheet 4 of 9

PLAT OF SURVEY U. S. GOVERNMENT LAND

Being The SE1/4, SW1/4 SW1/4, E1/2 SW1/4, S1/2 NW1/4 and West Part
of Government Lot 1, Section 24, Township 41 North, Range 13 East
Fourth Principal Meridian
FOREST COUNTY, WISCONSIN

SURVEY NOTES

This survey was made by the U.S. Department of Agriculture, Forest Service, for the purpose of establishing, marking and perpetuating the corners and boundary lines of U.S. Government land on the perimeter and within Section 24, Township 41 North, Range 13 East, Fourth Principal Meridian, Forest County, Wisconsin as shown on the Plat Map herein.

The original Government subdivision survey of this township was made by Daugherty and McDill in 1865. A dependent resurvey was made and approved by the General Land Office in 1942. The control for this survey is based on the 1942 dependent resurvey whereby each monument was located and placed in its true location.

The U.S. Government acquired title to the plat identified Government lands within section 24 during the period 1935-1954, except 1.0 acres in the NE 1/4 SW 1/4 further indicated on sheet 2 of this plat.

The corner positions recovered and established by this survey are monumented by monuments described in the map legend.

The bearings between corner positions are true bearings as determined by a solar observation near the center quarter corner of Section 24. The relative accuracy of the control traverse for corner establishment was one part in 16,000.

The field survey notes and a copy of the plat of survey are on file in the Forest Supervisor's Office at Rhinelander, Wisconsin.

CORNERS RECOVERED AND RESTORED

1. Section Corner to Sections 13 - 14 - 23 - 24, T41N, R13E.

Corner position recovered and monumented by the Forest Service in 1968 and 1974. Restoration certificate filed.

2. Section Corner to Sections 23 - 24 - 25 - 26, T41N, R13E.

Corner position marked by a 2 inch diameter galvanized iron pipe 3 feet long with brass cap stamped to identify corner. Replaced broken BLM concrete monument.

Corner References:

Maple 9"	N34°E	61.8 feet
Maple 15"	S61°E	126.0 feet
Elm 10"	S85°W	34.9 feet
Sign Post	West	0.5 feet

COPY

Sheet 5 of 9

PLAT OF SURVEY U. S. GOVERNMENT LAND

Being The SE1/4, SW1/4SW1/4, E1/2SW1/4, S1/2NW1/4 and West Part
of Government Lot I, Section 24, Township 41 North, Range 13 East,
Fourth Principal Meridian
FOREST COUNTY, WISCONSIN

3. Section Corner to Sections 19 - 24 - 25 - 30, T41N, R13E, R14E.

Corner position marked by a BLM dependent resurvey monument.

Corner References:

Balsam Fir snag 12"	N60°E	8.0 feet
Poplar 18"	S18°E	39.0 feet
White Birch 10"	S80°W	33.2 feet
White Birch 11"	N78°W	25.5 feet
Sign Post	East	0.5 feet

4. Quarter Corner to Sections 23 - 24, T41N, R13E.

Corner position marked by a BLM dependent resurvey monument.

BLM Corner References:

Cedar Stump 9"	S39°E	5.3 feet
Cedar 12"	S76°W	149.2 feet
New Corner References:		
White Birch 4"	S52°E	11.8 feet
Sign Post	North	0.5 feet

5. Quarter Corner to Sections 24 - 25, T41N, R13E.

Corner position marked by a BLM dependent resurvey monument.

BLM Corner References:

Maple 16"	N49 1/2°E	112.9 feet
Maple 20"	S20 1/2°W	39.4 feet
Sign Post, Wood		

6. Quarter Corner to Sections 19 - 24, T41N, R13-14E.

Corner position marked by a BLM dependent resurvey monument.

BLM Corner References:

Cedar 15"	S30 1/2°E	17.1 feet
Cedar 9"	S31°W	31.3 feet
Sign Post		

7. Witness Corner Meander Corner to Sections 19 - 24, T41N, R13-14E.

Corner position marked by a BLM dependent resurvey monument.

BLM Corner References:

Birch stump, rotted	N10 1/2°E	9.5 feet
Yellow Birch 12"	S60°W	5.9 feet
New Corner References:		
Black Ash 6"	S7°E	18.6 feet
Cedar 11"	S83°W	39.7 feet
Sign Post	North	0.5 feet

COPY

Sheet 6 of 9

PLAT OF SURVEY U. S. GOVERNMENT LAND

Being The SE 1/4, SW 1/4 SW 1/4, E 1/2 SW 1/4, S 1/2 NW 1/4 and West Part of
Government Lot 1, Section 24, Township 41 North, Range 13 East,
Fourth Principal Meridian
FOREST COUNTY, WISCONSIN

8. Witness Corner Meander Corner to Sections 13 - 24, T41N, R13E.

Corner position recovered and restored by the Forest Service in 1968. Restoration Certificate filed.

CORNERS ESTABLISHED

1. Center Quarter Corner.

Position established at the intersection of the East-West quarter line, a straight line between the East and West quarter corners, West the North-South quarter line on a mean bearing between the East and West sides of the section where origin is the South quarter corner.

Corner References:

White Birch 4"	S71°E	13.7 feet
Black Spruce 3"	S82°W	14.6 feet
Sign Post	Southwest	0.5 feet

2. Northwest Sixteenth:

Position established at the intersection of straight lines between the corresponding sixteenth corners East-West and North-South to the Northwest quarter of Section 24.

Corner References:

White Birch 6"	S24°E	82.2 feet
White Birch 6"	S25°W	55.4 feet
Sign Post	South	0.5 feet

3. South Sixteenth between Sections 23 - 24.

Position established at the midpoint and on line between the West quarter corner and the Southwest corner of Section 24.

Corner References:

White Birch 6"	S88°E	8.7 feet
White Birch 6"	N43°W	5.7 feet
Sign Post	Southeast	1.0 feet

4. North Sixteenth between Sections 23 - 24.

Position established at the midpoint and on line between the West quarter corner and the Northwest corner of Section 24.

Corner References:

White Birch 4"	S38°E	18.3 feet
White Birch 3"	S51°E	10.4 feet
High Point on Rock		
Outcrop-Chiseled Square	S74°E	84.5 feet
Sign Post	Southwest	0.5 feet

COPY

Sheet 7 of 9

PLAT OF SURVEY U. S. GOVERNMENT LAND

Being The SE1/4, SW1/4SW1/4, E1/2SW1/4, S1/2NW1/4 and West Part
of Government Lot 1, Section 24, Township 41 North, Range 13 East
Fourth Principal Meridian
FOREST COUNTY, WISCONSIN

5. Southwest Sixteenth Corner.

Position established at the intersection of straight lines between the corresponding sixteenth corner East-West and North-South to the Southwest quarter of Section 24.

Corner References:

Red Maple 6"	S54°W	15.9 feet
Sugar Maple 5"	N59°W	9.4 feet
Sign Post	East	0.5 feet

6. Center North Sixteenth Corner.

Position established at midpoint and on line between the center quarter corner and the mathematical position of the North quarter corner of Section 24.

Corner References:

Sign Post	South	0.5 feet
No bearing trees nearby, corner in fence R-O-W on South edge of clearing		

7. Center West Sixteenth Corner.

Position established at midpoint and on line between the West quarter corner and the center quarter corner of Section 24.

Corner References:

White Birch 5"	N70°E	24.6 feet
White Birch 4"	S63°E	22.9 feet
White Birch 5"	N68°W	39.6 feet
Sign Post	Northeast	0.5 feet

8. Center East Sixteenth Corner.

Position established at midpoint and on line between the East quarter corner and the center quarter corner.

Corner References:

Balsam Fir 6"	S9°E	26.8 feet
Black Spruce 6"	S81°W	55.7 feet
Sign Post	East	0.5 feet

9. Witness Corner Special Meander Corner.

Position established on high bank and on line of North-South 1/16 line above river. Distance to South Bank of Brule River is Northerly along North-South 1/16 Line, 71.5 feet

Corner References:

White Spruce 12"	N53°E	17.4 feet
White Spruce 10"	S59°E	5.2 feet
Sign Post	East	0.5 feet

COPY

Sheet 8 of 9

PLAT OF SURVEY U.S. GOVERNMENT LAND

Being The SE1/4, SW1/4SW1/4, E1/2SW1/4, S1/2NW1/4 and West Part
of Government Lot 1, Section 24, Township 41 North, Range 13 East
Fourth Principal Meridian
FOREST COUNTY, WISCONSIN

10. Property Corner to Southeast Corner of Government Land in Government Lot 1.

Corner Position located on East-West center line of section, 661.7 feet West of East 1/4 corner, which is 660 feet west of east section line.

Corner References:

Balsam Fir 8"	N68°E	4.2 feet
Poplar 6"	S77°W	19.8 feet
White Birch 12"	N42°W	26.8 feet
Sign Post	Southwest	0.5 feet

11. Point on Line.

Position established on line 660 feet West of East side of section and 1178.35 North of Southeast corner of Government Land in Lot 1. Point is 15.0 feet South of South bank of Brule River.

Corner References:

Cedar 10"	S43°E	47.9 feet
Cedar 9"	S11°W	62.3 feet
Sign Post	North	0.5 feet

Location of the 1 acre exception in the NESW Section 24:

The point of beginning was recovered being a cedar post on the easterly right of way line of State Highway 55. This post was being used and accepted as the Southwest corner of the one acre tract. The west line was then established parallel with the State Highway 55 and on the Easterly right of way line. The North and South lines were then established at right angles. This location is in agreement with the direction of the house, the highway, and occupancy although it does not compare with the magnetic bearing given in the deed. The intent of the deed to be 1 acre square along the east side of the highway and to include the school house which is now a home. See Sheet 2 for detailed drawing.

12. Property corner Number 1 or Point of Beginning.

Replaced cedar post found with monument corner references:

Southwest corner of house, N58°18'E, 67.00 feet
Southeast corner of house, N81°48'E, 82.95 feet

13. Property Corner Number 2.

Corner position located N42°11'E, 208.0 feet from point of beginning parallel with State Highway 55.

Corner References:

Northeast corner of house S18°35'W, 133.00 feet.

COPY

PLAT OF SURVEY U. S. GOVERNMENT LAND

Sheet 9 of 9

Being The SE1/4, SW1/4SW1/4, E1/2SW1/4, S1/2NW1/4 and West Part
of Government Lot 1, Section 24, Township 41 North, Range 13 East
Fourth Principal Meridian

FOREST COUNTY, WISCONSIN

14. Property Corner Number 3.

Corner position located S47°49'E, 208.0 feet from property corner number 2.

Corner References:

White Birch 5"	N8°E	6.03 feet
White Birch 8"	S28°E	22.62 feet

15. Property Corner Number 4.

Corner position located S42°11'W, 208.00 feet from property corner number 3.

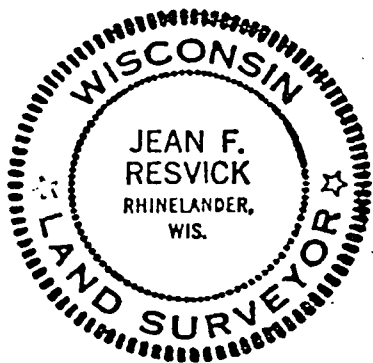
Corner References:

White Birch 6"	S30°E	13.45 feet
White Birch 5"	S43°W	16.22 feet

SURVEYOR'S AFFIDAVIT

I, Jean F. Resvick, Land Surveyor, U. S. Forest Service, and a Registered Land Surveyor in the State of Wisconsin, hereby certify that I have surveyed and subdivided Section 24, Township 41 North, Range 13 East, fourth principal meridian, Forest County, Wisconsin.

The Plat map and survey notes herein are a correct representation of the land surveyed and divided. I have surveyed and subdivided said section in accordance with the rules for the survey of public lands and with the statutes of the State of Wisconsin.



Jean F. Resvick

Land Surveyor, U. S. Forest Service
R.L.S. State of Wisconsin
Certificate S-802

Date of Survey: 1977