

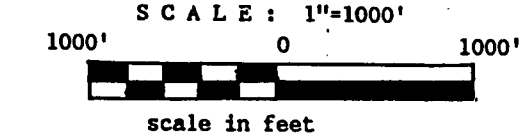
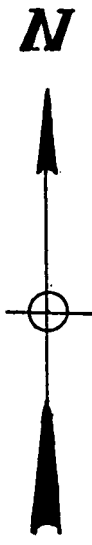
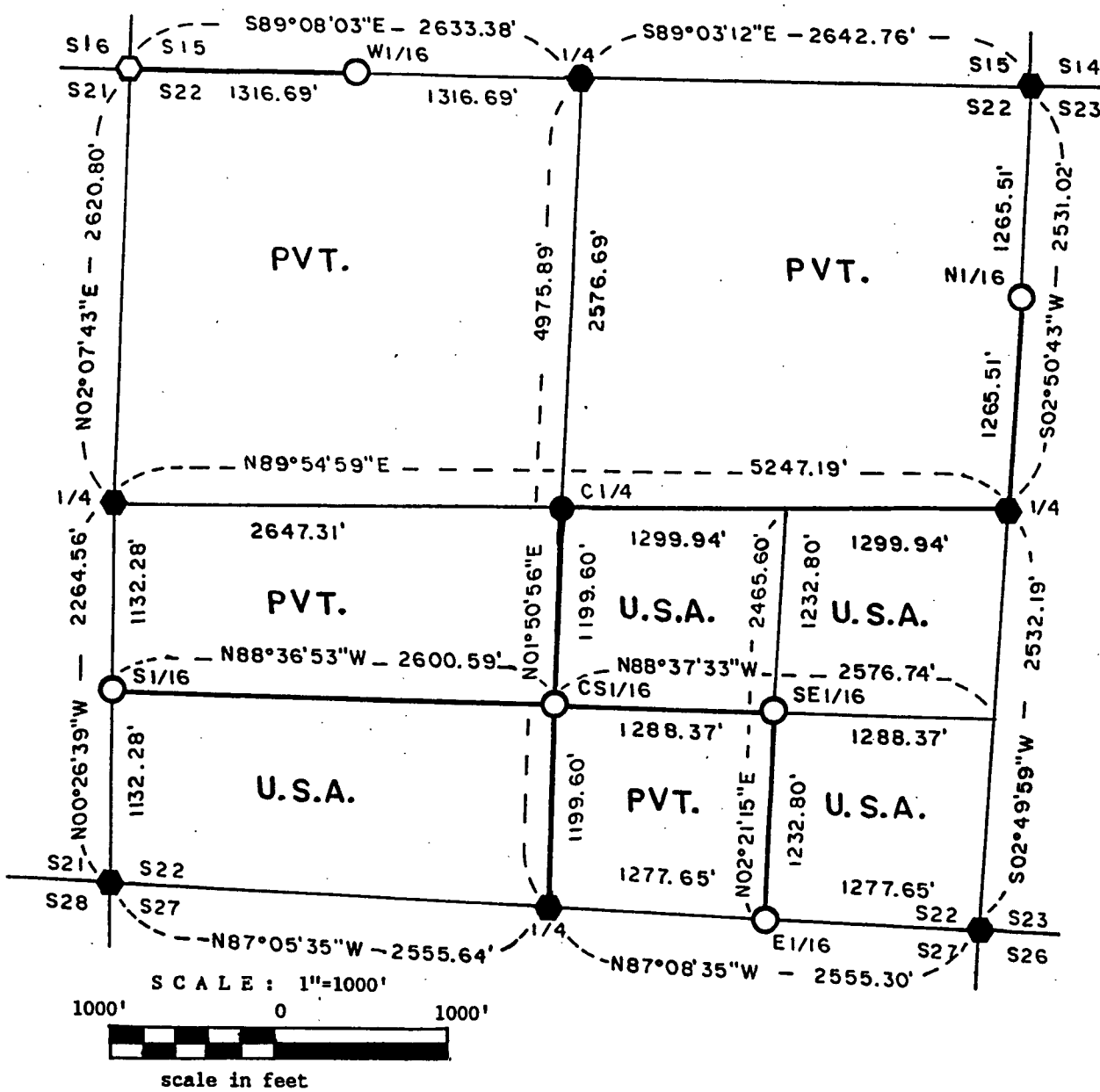
Stock No. 26273

FOREST CO SURVEYOR
 FILE # 41322-19870224
 DATE _____ BY _____

PLAT OF SURVEY FOR CERTIFIED LAND CORNER RESTORATION AND ESTABLISHMENT.

BEING THE CORNERS FOR THE S 1/2 OF THE SW 1/4, THE N 1/2 OF THE SE 1/4 AND THE SE 1/4 OF THE SE 1/4.

SECTION 22, T41N, R13E, FOURTH PRINCIPAL MERIDIAN
 FOREST COUNTY, STATE OF WISCONSIN



LEGEND

- Boundary line marked to standard.
- 2 1/2 inch diameter aluminum pipe monument, 36 inches long with an aluminum cap stamped to identify the corner.
- 2 1/2 inch diameter aluminum pipe monument, 60 inches long with an aluminum cap stamped to identify the corner.
- ◆ General Land Office Dependent Resurvey Monuments.
- ⬡ 2 inch diameter galvanized iron pipe 5 feet long with brass cap stamped to identify the corner.

NOTE Bearings are referenced to polaris observations.

Plat ready for filing: *P. Frank Hulby* District Ranger

Stock No. 26273

Sheet 2 of 4

SURVEY NOTES

This survey was made by John C. Schulke, a Registered Land Surveyor in the State of Wisconsin, for the U.S. Department of Agriculture, Forest Service. The purpose of the survey was for recovery, establishing, marking and perpetuating the corners and boundary lines of the U.S. Government Land on the perimeter and within Section 22, Township 41 North, Range 13 East, Fourth Principal Meridian, Forest County, Wisconsin.

The original Government subdivision survey of this township was made by Daugherty and McDill in 1865. A dependent resurvey done under the supervision of Mr. Veal was made and approved by the General Land Office in 1942. The control for this survey is based on the 1942 dependent resurvey.

The bearings between corner positions are true bearings as determined by reference to polaris observations. The accuracy of this survey exceeds the State requirement for closure of 1 in 3,000. Corners recovered or established by this survey are marked as described in the map legend. Each monumented corner is referenced to blazed, scribed, painted and tagged bearing trees. Tie bearings are magnetic, and not corrected for declination.

CORNERS RECOVERED AND RESTORED

1. Section Corner Common to Section 14, 15, 22 and 23.
Corner monument recovered in place and as described on Certified Land Corner Restoration form in the Forest County Records, Document #105824, in 1974.
2. Quarter Corner Between Sections 15 and 22.
Corner monument recovered in place and as described on Certified Land Corner Restoration form in the Forest County Records, Document #99464, in 1971.
3. Section Corner Common to Section 15, 16, 21 and 22.
Corner monument recovered in place and as described on Certified Land Corner Restoration form in the Forest County Records, Document #99560, in 1971.
4. Quarter Corner Between Sections 21 and 22.
Corner monument recovered in place and as described on Certified Land Corner Restoration form in the Forest County records, Document #99463, in 1971.
5. South Sixteenth Corner Between Sections 21 and 22.
Corner monument in place and as described in survey of Section 21 by James L. Will (S-1410) in 1983.

Corner references by Mr. Will:

Double Spruce	6"	S28°40'W	34.03 feet
Spruce	8"	S72°W	9.12 feet
Spruce	8"	S50°E	19.47 feet
Steel sign post		SE	1.0 foot

6. Section Corner Common to Section 21, 22, 27 and 28.
Corner monument recovered in place and as described on Certified Land Corner Restoration form in the Forest County Records, Document #98070, in 1970.

Stock No. 26273

Sheet 3 of 4

7. Quarter Corner Between Sections 22 and 27.

Corner monument recovered in place.

Corner references recovered:

Cedar	18"	North	34.03 feet
Cedar	12"	S32°E	18.60 feet

New corner references:

Sug. Maple	6"	S64°W	27.88 feet
Cedar	8"	S88°E	17.22 feet
Steel sign post		NE	1.0 foot

8. Section Corner Common to Section 22, 23, 26 and 27.

Corner monument recovered in place.

Corner references recovered:

Cedar stump	14"	S20°W	28.05 feet
Cedar snag	12"	N20°W	37.95 feet

New corner references:

Balsam	8"	N84°W	36.86 feet
Poplar	9"	S56°W	33.6 feet
Balsam	14"	S10°E	53.75 feet
Poplar	10"	N33°W	30.64 feet
Steel sign post		West	1.9 feet

9. Quarter Corner Between Sections 22 and 23.

Corner monument recovered in place.

Corner references recovered:

Maple	8"	S78°E	16.04 feet
Dead Birch	5"	S85°W	13.15 feet

New corner references:

Sug. Maple	4"	N23°E	22.85 feet
Red Maple	9"	S18°W	47.4 feet
W. Birch	6"	N54°W	29.47 feet
Steel sign post		NE	2.3 feet

CORNERS ESTABLISHED1. West Sixteenth Corner Between Sections 15 and 22.

Corner position established at the midpoint and on line between the North quarter corner and the Northwest Section corner of Section 22. Monument 6" below the surface of the road on the South side.

Corner references:

Power Pole	#N70-1113	N50°W	37.97 feet
Boundary sign post		North	26.69 feet
Do Not Disturb Monument sign post		S19°E	13.77 feet

2. Center Quarter Corner of Section 22.

Corner position established at the intersection of the straight lines between opposing quarter corners on the perimeter of Section 22.

Corner references:

Tamarack	14"	N30°W	40.98 feet
Tamarack	11"	N78°W	30.2 feet
Tamarack	10"	S03°E	87.64 feet
Center of Rockdam Rd.		East	33.0 feet
Steel sign post		NW	1.90 feet

Stock No. 26273

Sheet 4 of 4

3. Center South Sixteenth Corner of Section 22.
Corner position established at the midpoint and on line between the South quarter corner and the Center quarter corner of Section 22. Recovered 2" iron pipe in driveway N18°50'E 119.1 feet.

Corner references:

Spruce	19"	N78°W	25.53 feet
Sug. Maple	8"	N25°E	22.14 feet
W. Birch	12"	S20°E	19.15 feet
Steel sign post		SW	1.0 foot

4. East Sixteenth Corner Between Sections 22 and 27.
Corner position established at the midpoint and on line between the South quarter corner and the Southeast Section corner of Section 22.

Corner references:

Red Maple	7"	N15°E	12.41 feet
Cedar	15"	S88°E	23.07 feet
Cedar	17"	S79°W	38.60 feet
Steel sign post		SE	1.3 feet

5. Southeast Sixteenth Corner of Section 22.
Corner position is at the intersection of the straight lines between opposing sixteenth corners on the perimeter of the Southeast quarter of Section 22.

Corner references:

Cedar	15"	N20°W	15.95 feet
Cedar	10"	S19°W	11.52 feet
Sug. Maple	7"	N38°E	15.34 feet
Steel sign post		East	0.08 feet

6. North Sixteenth Corner Between Sections 22 and 23.
Corner position established at the midpoint and on line between the East quarter corner and the Northeast Section corner of Section 22.

Corner references:

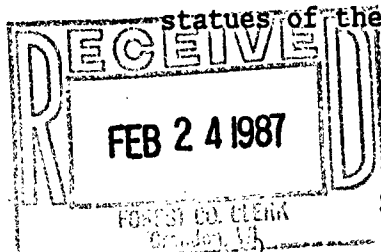
Spruce	14"	S51°E	89.78 feet
Spruce	22"	S03°W	72.75 feet
Cedar	6"	S22°W	82.89 feet
Steel sign post		SE	1.05 feet

SURVEYOR'S AFFIDAVIT

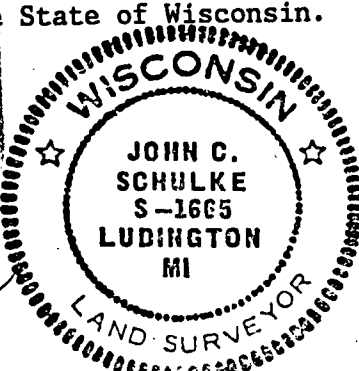
State of Wisconsin)
County of Forest)^{ss}

I, John C. Schulke, a Cadastral Surveyor, and a Registered Land Surveyor in the State of Wisconsin, hereby certify that I have surveyed and subdivided Section 22, Township 41 North, Range 13 East, Fourth Principal Meridian, State of Wisconsin.

The plat map and survey notes herewith are a correct representation of the land surveyed and subdivided. I have surveyed and subdivided said section in accordance with the rules for the survey of the public lands and with the statutes of the State of Wisconsin.



Dora C. James
Forest Co. Clerk



John C. Schulke
4604 South U.S.-31
Ludington, MI 49431
R.L.S. State of Wisconsin
Date of Survey 1985
Certificate S-1665

John C. Schulke