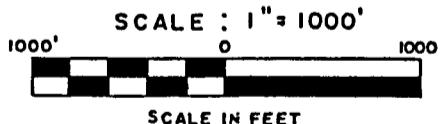
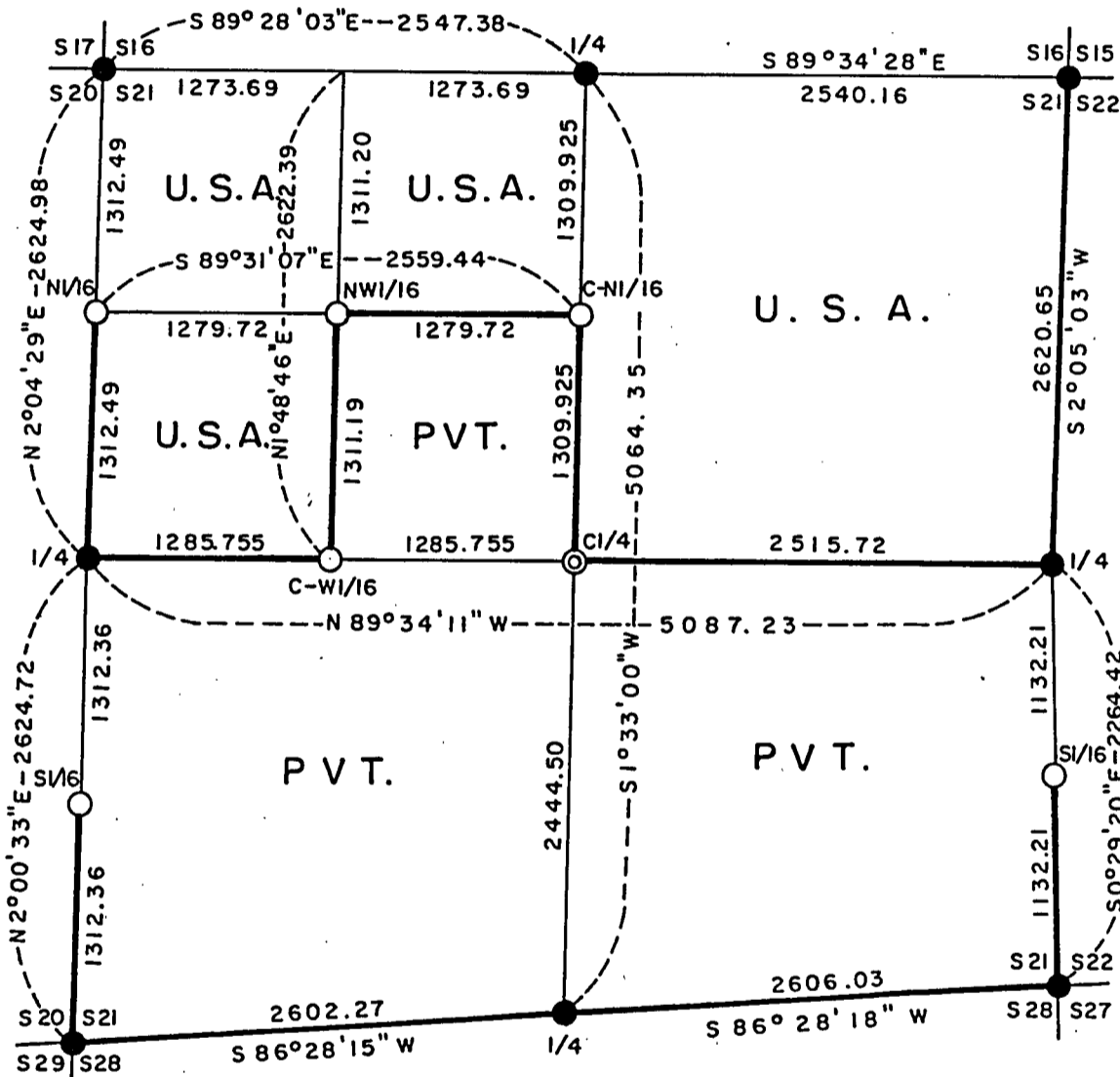
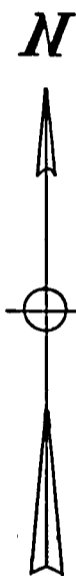


PLAT OF SURVEY FOR CERTIFIED LAND CORNER RESTORATION AND ESTABLISHMENT

BEING THE CORNERS FOR THE NE 1/4, THE NE 1/4 OF THE NW 1/4, THE NW 1/4 OF THE NW 1/4 AND THE SW 1/4 OF THE NW 1/4, SECTION 21, T41N, R13E

FOURTH PRINCIPAL MERIDIAN

COUNTY OF FOREST, STATE OF WISCONSIN



- L E G E N D -

- Boundary line marked to standard.
- 2½ inch diameter aluminum pipe monument, 36 inches long with an aluminum cap stamped to identify the corner.
- ⊙ 2½ inch diameter aluminum pipe monument, 60 inches long with an aluminum cap stamped to identify the corner.
- General Land Office Dependent Resurvey Monuments.

NOTE Bearings are referenced to solar observations.

Stock No. 26273

Sheet 2 of 6

SURVEY NOTES

This survey was made by James L. Will, a Registered Land Surveyor in the State of Wisconsin, for the U.S. Department of Agriculture, Forest Service, to establish and mark controlling subdivision corners of U.S. Government Land in Section 21, Township 41 North, Range 13 East, Fourth Principal Meridian, Forest County, Wisconsin.

The original Government survey of this township was made in 1865.

A dependent re-survey was made by the U.S. Department of the Interior General Land Office in 1942. The corners of the dependent re-survey of the perimeter of Section 21 were recovered as control for the subdivision survey of Section 20.

The U.S. Government acquired title to the lands in Section 21 in 1935 and 1938.

The bearings between corner positions are true bearings as determined by reference to solar observations. The accuracy of this survey exceeds the State requirements of 1 in 3000.

The field notes and a copy of the Plat of Survey are on file in the Forest Supervisor's office in Rhinelander, Wisconsin.

CORNERS RECOVERED AND RESTORED1. Section Corner Common to Sections 16, 15, 21 and 22.

Corner position is marked by a monument from the 1942 Dependent Resurvey.

Corner references recovered:

Maple	22"	N 39°30' E	139.26 Feet
Maple	14"(dead)	S 9°15' E	36.30 Feet
Spruce	14"(stump)	S 7°45' W	27.72 Feet
Maple	20"	N 8°15' W	88.44 Feet
Steel sign post		Northwest	1.2 Feet

New corner references:

Maple	7"	S 19°30' E	29.91 Feet
Elm	8"	S 38°30' W	39.12 Feet

2. Quarter Corner Between Sections 21 and 22.

Corner position is marked by a monument from the 1942 Dependent Resurvey.

Corner references recovered:

White Spruce	9"	S 47° E	9.62 Feet
White Spruce	9"	S 66° W	58.22 Feet
Steel sign post		Southwest	1.0 Feet

New corner references:

Spruce	8"	N 5°30' E	56.80 Feet
--------	----	-----------	------------

3. Section Corner Common to Sections 21, 22, 28 and 27.

Corner position is marked by a monument from the 1942 Dependent Resurvey.

Corner references recovered:

Maple	14"	N 65° E	56.57 Feet
Maple	14"	S 58°30' W	53.58 Feet
Spruce	12"(dead)	S 38° E	31.40 Feet
Steel sign post		Southeast	1.0 Feet

Stock No. 26273

Sheet 3 of 6

New corner references:

Balsam	12"	S 43°15' E	11.71 Feet
Balsam	5"	N 46°40' W	17.86 Feet

4. Quarter Corner Between Sections 21 and 28.

Corner position is marked by a monument from the 1942 Dependent Resurvey.

Corner references recovered:

Spruce	16"(stump)	N 81°30' W	23.70 Feet
White Pine	18"	S 27° W	40.05 Feet
Steel sign post		South	1.0 Feet

New corner references:

White Pine	16"	N 83° W	63.40 Feet
Maple	5"	N 33°40' W	33.98 Feet

5. Section Corner Common to Sections 20, 21, 29 and 28.

Corner position is marked by a monument from the 1942 Dependent Resurvey.

Corner references recovered:

Found corner references as described on certified land corner restoration form filed on May 25, 1970 by Jean F. Resvick, Document #98924, Forest County records.

White Birch	14"(dying)	S 33° W	42.90 Feet
Norway Pine	6"	S 57° E	6.61 Feet

Steel sign post		South	1.0 Feet
-----------------	--	-------	----------

6. Quarter Corner Between Sections 20 and 21.

Corner position is marked by a monument from the 1942 Dependent Resurvey.

Corner references recovered:

White Birch	8"	N 25° W	6.39 Feet
-------------	----	---------	-----------

New corner references:

Maple	4"	N 8°15' E	47.50 Feet
Cherry	3"	S 49°30' W	3.46 Feet
Creek		South	25.5 Feet
Centerline of Forest Road #2193		West	65.5 Feet
Steel sign post		Northeast	1.0 Feet

7. Section Corner Common to Sections 17, 16, 20 and 21.

Corner position is marked by a monument from the 1942 Dependent Resurvey.

Corner references recovered:

Maple	12"(dead)	N 20°15' E	116.49 Feet
Maple	15"	S 68°15' E	48.84 Feet
Maple	13"	S 43°15' W	19.80 Feet
Maple	14"	N 3°15' W	110.22 Feet
Steel sign post		South	1.0 Feet

New corner references:

Maple	10"	S 32°50' E	29.35 Feet
-------	-----	------------	------------

Stock No. 26273

Sheet 4 of 6

8. Quarter Corner Between Sections 16 and 21.

Corner position is marked by a monument from the 1942 Dependent Resurvey.

Corner references recovered:

Maple	10" (dead)	N 16°15' E	84.15 Feet
Double Maple	24"	S 51° E	99.66 Feet
Steel sign post		South	1.0 Feet

New corner references:

Maple	7"	S 63°45' W	68.46 Feet
Powerpole WMP Co. #N70 1119		N 29°30' E	30.06 Feet

CORNERS ESTABLISHED1. South Sixteenth Corner Between Sections 21 and 22.

Corner position established at the midpoint and on line between the East Quarter corner and the Southeast Section corner of Section 21.

Corner references:

Double Spruce	6"	S 28°40' W	34.03 Feet
Spruce	8"	N 72° W	9.12 Feet
Spruce	8"	S 50° E	19.47 Feet
Steel sign post		Southeast	1.0 Feet

2. South Sixteenth Corner Between Sections 20 and 21.

Corner position established at the midpoint and on line between the West Quarter corner and the Southwest Section corner of Section 21.

Corner references:

White Birch	6"	N 7°10' W	25.30 Feet
White Birch	6"	N 49°25' E	29.07 Feet
Scotch Pine	5"	S 72°22' W	9.78 Feet
Steel sign post		Southwest	2.0 Feet

3. North Sixteenth Corner Between Sections 20 and 21.

Corner position established at the midpoint and on line between the West Quarter corner and the Northwest Section corner of Section 21.

Corner references:

Spruce	7"	S 29° W	19.78 Feet
Maple	5"	N 59° E	21.75 Feet
Spruce	6"	S 33°30' E	21.72 Feet
Steel sign post		Southeast	1.0 Feet

4. Northwest Sixteenth Corner of Section 21.

Corner position is at the intersection of the straight lines between opposing sixteenth corners on the perimeter of the Northwest quarter of Section 21.

Corner references:

Maple	8"	S 7°15' W	14.42 Feet
Maple	10"	N 40°00' W	32.50 Feet
Maple	10"	N 63°00' E	10.32 Feet
Steel sign post		Northwest	1.0 Feet

Stock No. 26273

Sheet 5 of 6

5. Center North Sixteenth Corner of Section 21.

Corner position established at the midpoint and on line between the North quarter corner and the Center quarter corner of Section 21.

Corner references:

Maple	8"	N 52°50' W	19.05 Feet
Maple	7"	N 42°25' E	41.39 Feet
Maple	8"	S 41°40' W	32.53 Feet
Steel sign post		Northeast	1.40 Feet

6. Center West Sixteenth Corner of Section 21.

Corner position established at the midpoint and on line between the West quarter corner and the Center quarter corner of Section 21.

Corner references:

Spruce	6"	N 58°30' W	41.67 Feet
Spruce	4"	S 27°35' E	21.59 Feet
Balsam	7"	N 3°20' W	38.95 Feet
Steel sign post		Northwest	1.15 Feet

7. Center Quarter Corner of Section 21.

Corner position established at the intersection of the straight lines between opposing quarter corners on the perimeter of Section 21. Found 1 inch diameter iron pipe at corner location and replaced same with a 2½ inch diameter aluminum pipe monument, 60 inches long with an aluminum cap stamped to identify the corner.

Corner references recovered:

White Pine	18"	N 6°30' E	32.81 Feet
Tamarack	9"	S 43°30' E	12.16 Feet

New corner references:

Tamarack	7"	N 71°00' E	33.32 Feet
Steel sign post		Northeast	1.0 Feet

Stock No. 26273

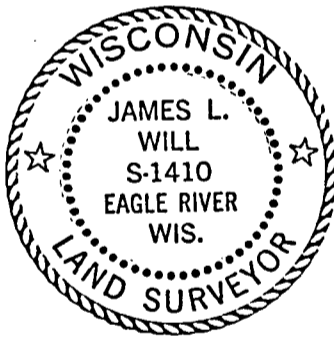
Sheet 6 of 6

SURVEYOR'S AFFIDAVIT

State of Wisconsin)
County of Forest) SS

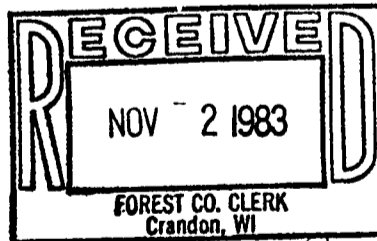
I, James L. Will, a Cadastral Surveyor, and a registered land surveyor in the State of Wisconsin, hereby certify that I have surveyed and subdivided Section 21, Township 41 North, Range 13 East, Fourth Principal Meridian, State of Wisconsin.

The plat map and survey notes herewith are a correct representation of the land surveyed and divided. I have surveyed and subdivided said section in accordance with the rules for the survey of the public lands and with the statutes of the State of Wisconsin.



Date of Survey: 1983

James L. Will
James L. Will
Genisot & Associates, Inc.
R.L.S. State of Wisconsin
Certificate S-1410



Dora C. James