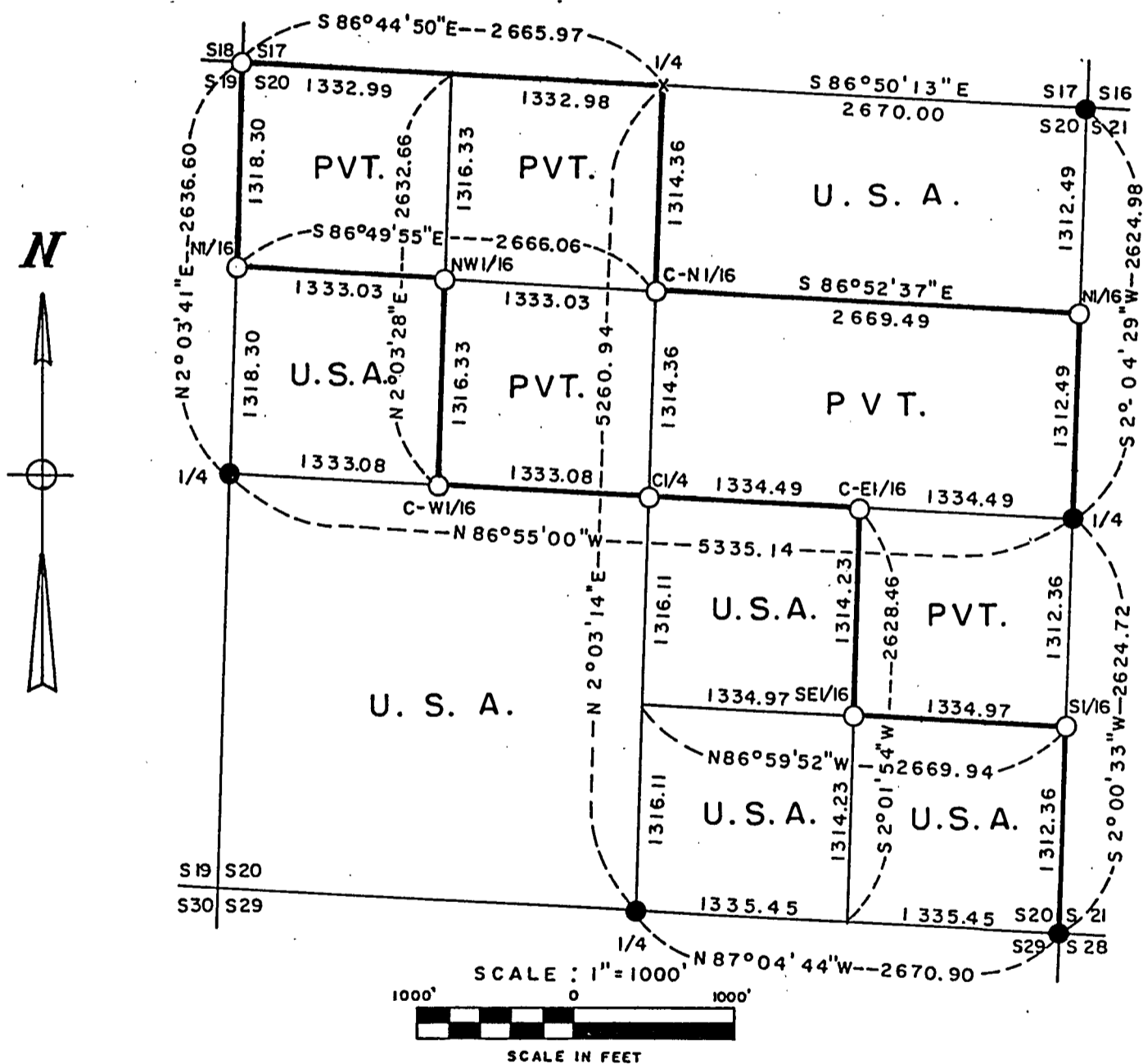


PLAT OF SURVEY FOR CERTIFIED LAND CORNER RESTORATION AND ESTABLISHMENT

BEING THE CORNERS FOR THE N1/2 OF THE NE1/4, THE SW1/4 OF THE NW1/4, THE SW1/4, THE NW1/4 OF THE SE1/4, THE SE1/4 OF THE SE1/4 AND THE SW1/4 OF THE SE1/4, SECTION 20, T 41N, R 13E

FOURTH PRINCIPAL MERIDIAN

COUNTY OF FOREST, STATE OF WISCONSIN



- L E G E N D -

- Boundary line marked to standard.
- 2½ inch diameter aluminum pipe monument, 36 inches long with an aluminum cap stamped to identify the corner.
- General Land Office Dependent Resurvey Monuments.
- x Corner position falls in creek, no monument at this position.

NOTE Bearings are referenced to solar observations.



Stock No. 26273

Sheet 2 of 7

SURVEY NOTES

This survey was made by James L. Will, a Registered Land Surveyor in the State of Wisconsin, for the U.S. Department of Agriculture, Forest Service, to establish and mark controlling subdivision corners of U.S. Government Land in Section 20, Township 41 North, Range 13 East, Fourth Principal Meridian, Forest County, Wisconsin.

The original Government survey of this township was made in 1865.

A dependent re-survey was made by the U.S. Department of the Interior General Land Office in 1942. The corners of the dependent re-survey of the perimeter on Section 20 were recovered as control for the subdivision survey of Section 20.

The U.S. Government acquired title to the lands in Section 20 in 1934, 1935, 1936, 1938 and 1949.

The bearings between corner positions are true bearings as determined by reference to solar observations. The accuracy of this survey exceeds the State requirements of 1 in 3000.

The field notes and a copy of the Plat of Survey are on file in the Forest Supervisor's office in Rhinelander, Wisconsin.

CORNERS RECOVERED AND RESTORED1. Section Corner Common to Sections 17, 16, 20 and 21.

Corner position is marked by a monument from the 1942 Dependent Resurvey.

## Corner references recovered:

Maple	12" (dead)	N 20°15' E	116.49 Feet
Maple	15"	S 68°15' E	48.84 Feet
Maple	13"	S 43°15' W	19.80 Feet
Maple	14"	N 3°15" W	110.22 Feet
Steel sign post		South	1.0 Feet

## New corner references:

Maple	10"	S 32°50' E	29.35 Feet
-------	-----	------------	------------

2. Quarter Corner Between Sections 20 and 21.

Corner position is marked by a monument from the 1942 Dependent Resurvey.

## Corner references recovered:

White Birch	8"	N 25° W	6.39 Feet
-------------	----	---------	-----------

## New corner references:

Maple	4"	N 8°15' E	47.50 Feet
Cherry	3"	S 49°30' W	3.46 Feet
Creek		South	25.5 Feet
Centerline of Forest Road #2193		West	65.5 Feet
Steel sign post		Northeast	1.0 Feet

Stock No. 26273

Sheet 3 of 7

3. Section Corner Common to Sections 20, 21, 29 and 28.

Corner position is marked by a monument from the 1942 Dependent Resurvey.

## Corner references recovered:

Found corner references as described on certified land corner restoration form filed on May 25, 1970 by Jean F. Resvick, Document #98924, Forest County records.

White Birch	14" (dying)	S 33°	W	42.90 Feet
Norway Pine	6"	S 57°	E	6.61 Feet

Steel sign post		South		1.0 Feet
-----------------	--	-------	--	----------

4. Quarter Corner Between Sections 20 and 29.

Corner position is marked by a monument from the 1942 Dependent Resurvey.

## Corner references recovered:

Poplar	10"	N 22°45'	E	27.72 Feet
White Pine	21"	S 13°15'	W	147.18 Feet

## New corner references:

Norway Pine	10"	S 10°45'	E	22.30 Feet
White Pine	6"	S 80°30'	W	19.60 Feet
Steel sign post		Northwest		1.0 Feet

5. Quarter Corner Between Sections 19 and 20.

Corner position is marked by a monument from the 1942 Dependent Resurvey.

## Corner references recovered:

Poplar	14"	S 28°30'	E	24.09 Feet
--------	-----	----------	---	------------

## New corner references:

White Pine	5"	N 38°40'	E	15.40 Feet
White Pine	8"	S 70°40'	W	17.69 Feet
White Pine	6"	S 8°00'	E	14.09 Feet
Steel sign post		Northeast		1.0 Feet

6. Section Corner Common to Sections 18, 17, 19 and 20.

Corner position is marked by a 2½ inch diameter aluminum pipe monument, 36 inches long with an aluminum cap stamped to identify the corner.

## Corner references recovered:

Witness Corner; 6 inch diameter concrete monument with a brass cap bent over. Replaced monument with the monument as described in #7 Below.

## New corner references:

Witness Corner (See #7 Below)		N 2°21'	W	33.00 Feet
White Pine	6"	North		91.86 Feet
White Pine	7"	S 11°45'	W	80.68 Feet
White Pine	14"	N 17°00'	W	87.34 Feet
Power Pole		N 73°30'	E	82.76 Feet
Steel sign post		North		1.0 Feet

7. Witness Section Corner Common to Sections 18, 17, 19 and 20.

Corner position is marked by a 2½ inch diameter aluminum pipe monument, 36 inches long with an aluminum cap stamped to identify the corner.

## Corner references recovered:

Poplar	12"	N 2°45'	E	65.92 Feet
--------	-----	---------	---	------------

Stock No. 26273

Sheet 4 of 7

## New corner references:

White Pine	14"	N 25°45' W	56.10 Feet
White Pine	6"	N 1°30' E	58.87 Feet
Steel sign post		North	1.0 Feet

8. West Witness Quarter Corner Between Sections 17 and 20.

Corner position is marked by a monument from the 1942 Dependent Resurvey. Corner position is N 86°44'50" W 32.34 Feet from the Quarter Corner which falls in a Creek.

## Corner references recovered:

Steel sign post		North	1.0 Feet
-----------------	--	-------	----------

## New corner references:

Balsam	6"	S 3°30' W	17.25 Feet
Tamarack	4"	N 75°30' W	95.52 Feet
Cherry	9"	S 41°45' E	87.18 Feet
20 Foot wide Creek		East	12.0± Feet

9. South Witness Quarter Corner Between Sections 17 and 20.

Corner position is marked by a 2½ inch diameter aluminum pipe monument, 36 inches long with an aluminum cap stamped to identify the corner. Corner position is S 2°03'14" W 40.00 Feet from the Quarter Corner which falls in a Creek.

## New corner references:

Cherry	9"	S 49°20' E	35.68 Feet
Cherry	6"	S 2°00' W	28.35 Feet
Balsam	7"	S 66°00' W	14.94 Feet
Steel sign post		Northeast	1.0 Feet
20 Foot wide Creek		North	36.0± Feet

CORNERS ESTABLISHED1. North Sixteenth Corner Between Sections 20 and 21.

Corner position established at the midpoint and on line between the East Quarter corner and the Northeast Section corner of Section 20.

## Corner references:

Spruce	7"	S 29° W	19.78 Feet
Maple	5"	N 59° E	21.75 Feet
Spruce	6"	S 33°30' E	21.72 Feet
Steel sign post		Southeast	1.0 Feet

2. South Sixteenth Corner Between Sections 20 and 21.

Corner position established at the midpoint and on line between the East Quarter corner and the Southeast Section corner of Section 20.

## Corner references:

White Birch	6"	N 7°10' W	25.30 Feet
White Birch	6"	N 49°25' E	29.07 Feet
Scotch Pine	5"	S 72°22' W	9.78 Feet
Steel sign post		Southwest	2.0 Feet

Stock No. 26273

Sheet 5 of 7

3. North Sixteenth Corner Between Sections 19 and 20.

Corner position established at the midpoint and on line between the West Quarter corner and the Northwest Section corner of Section 20.

## Corner references:

Maple	6"	N 58°50' E	21.69 Feet
White Birch	7"	S 19°45' E	18.13 Feet
White Birch	11"	S 63°30' W	14.53 Feet
Steel sign post		Southwest	1.0 Feet

4. Northwest Sixteenth Corner of Section 20.

Corner position is at the intersection of the straight lines between opposing sixteenth corners on the perimeter of the Northwest quarter of Section 20.

## Corner references:

Maple	10"	S 71°40' E	17.32 Feet
Maple	9"	S 27°15' W	17.39 Feet
Maple	7"	N 31°20' W	4.53 Feet
Steel sign post		Southwest	1.0 Feet

5. Center North Sixteenth Corner of Section 20.

Corner position established at the midpoint and on line between the North quarter corner and the Center quarter corner of Section 20.

## Corner references:

Maple	7"	N 47°30' E	39.53 Feet
Maple	6"	S 80°00' E	33.89 Feet
Maple	6"	N 43°30' W	49.26 Feet
Steel sign post		Northeast	1.0 Feet

6. Center West Sixteenth Corner of Section 20.

Corner position established at the midpoint and on line between the West quarter corner and the Center quarter corner of Section 20.

## Corner references:

Maple	12"	S 7°10' W	22.25 Feet
Maple	5"	N 60°25' W	22.27 Feet
Maple	6"	N 45°50' E	13.35 Feet
Steel sign post		Southwest	1.30 Feet

7. Center Quarter Corner of Section 20.

Corner position established at the intersection of the straight lines between opposing quarter corners on the perimeter of Section 20.

## Corner references:

Norway Pine	10"	S 89°35' E	14.98 Feet
White Birch	7"	N 24°00' W	14.14 Feet
Maple	4"	S 86°50' W	25.27 Feet
Steel sign post		South	1.10 Feet

Stock No. 26273

Sheet 6 of 7

8. Center East Sixteenth Corner of Section 20.

Corner position established at the midpoint and on line between the East quarter corner and the Center quarter corner of Section 20.

## Corner references:

White Birch 16"	N 1°25' E	30.24 Feet
White Birch 9"	S 31°15' W	14.52 Feet
White Birch 7"	N 60°35' W	32.19 Feet
Steel sign post	Southwest	1.10 Feet

9. Southeast Sixteenth Corner of Section 20.

Corner position is at the intersection of the straight lines between opposing sixteenth corners on the perimeter of the Southeast quarter of Section 20.

## Corner references:

White Pine 6"	N 4°40' W	8.74 Feet
White Pine 8"	S 37°30' E	7.16 Feet
White Pine 7"	S 35°45' W	13.11 Feet
Steel sign post	Southwest	1.0 Feet

Stock No. 26273

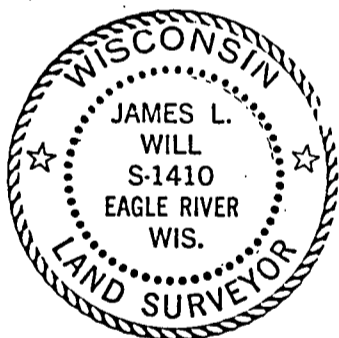
Sheet 7 of 7

SURVEYOR'S AFFIDAVIT

State of Wisconsin)  
County of Forest ) ss

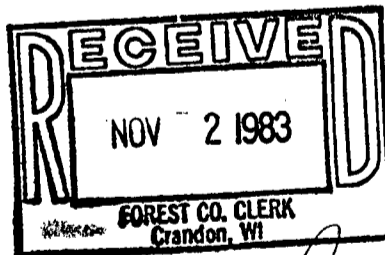
I, James L. Will, a Cadastral Surveyor, and a registered land surveyor in the state of Wisconsin, hereby certify that I have surveyed and subdivided Section 20, Township 41 North, Range 13 East, Fourth Principal Meridian, State of Wisconsin.

The plat map and survey notes herewith are a correct representation of the land surveyed and divided. I have surveyed and subdivided said section in accordance with the rules for the survey of the public lands and with the statutes of the State of Wisconsin.



Date of Survey: 1983

*James L. Will*  
James L. Will  
Genisot & Associates, Inc.  
R.L.S. State of Wisconsin  
Certificate S-1410



*Dora C. James*