

Stock No. 26273

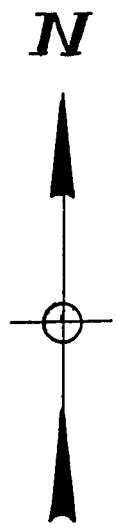
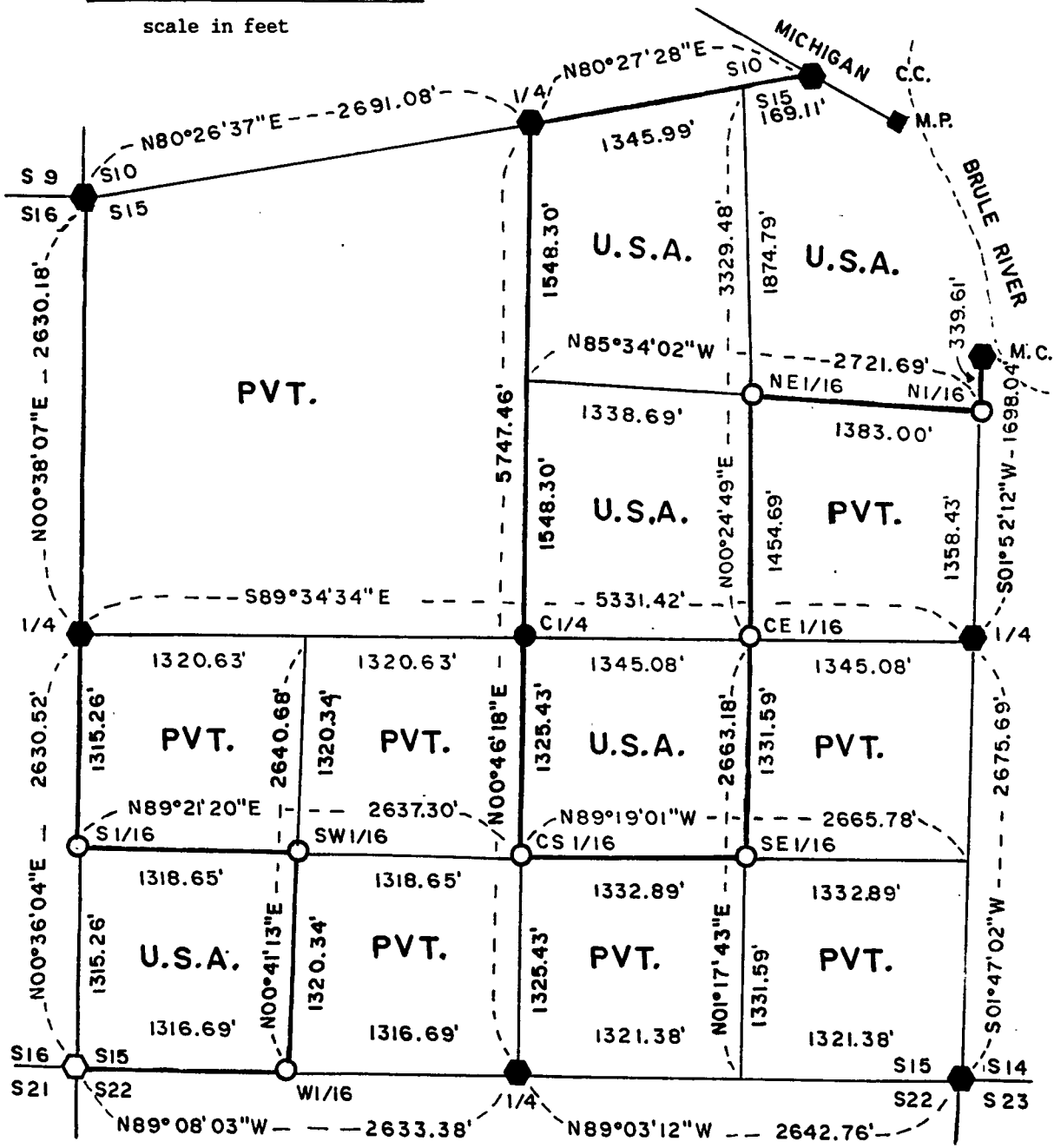
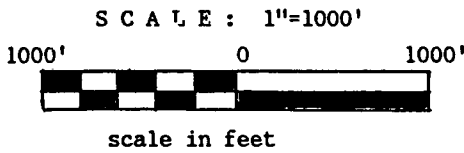
FOREST CO SURVEYOR

FILE # 41315-19870224

DATE \_\_\_\_\_ BY \_\_\_\_\_

**PLAT OF SURVEY FOR CERTIFIED LAND CORNER RESTORATION AND ESTABLISHMENT.**

BEING THE CORNERS FOR THE SW 1/4 OF THE SW 1/4, THE W 1/2 OF THE NE 1/4, GOVERNMENT LOT 1 AND THE NW 1/4 OF THE SE 1/4.  
SECTION 15, T41N, R13E, FOURTH PRINCIPAL MERIDIAN  
FOREST COUNTY, STATE OF WISCONSIN



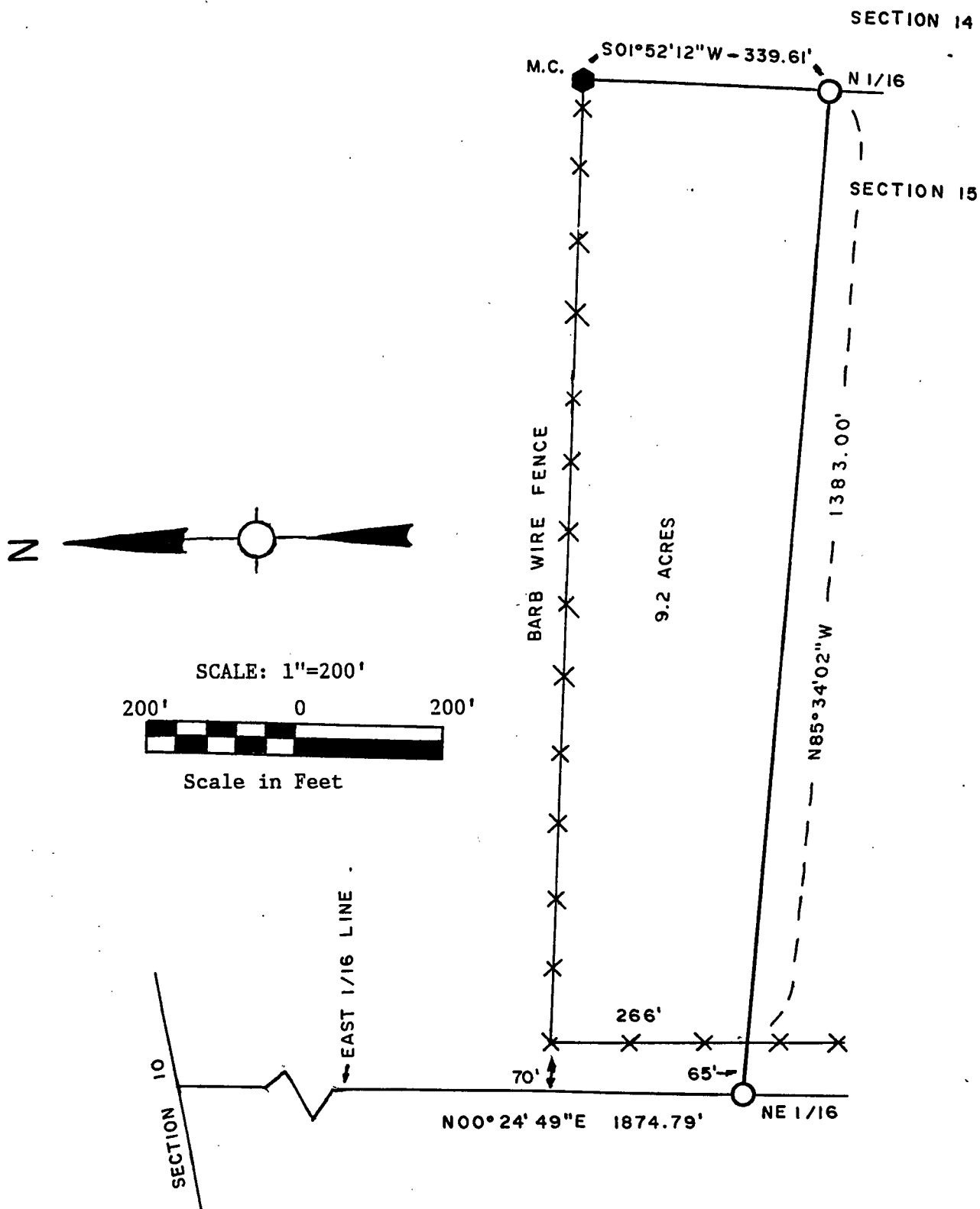
**LEGEND**

- Boundary line marked to standard.
- 2 1/2 inch diameter aluminum pipe monument, 36 inches long with an aluminum cap stamped to identify the corner.
- 2 1/2 inch diameter aluminum pipe monument, 60 inches long with an aluminum cap stamped to identify the corner.
- ◆ General Land Office Dependent Resurvey Monuments.
- ⬡ 2 inch diameter galvanized iron pipe 5 feet long with brass cap stamped to identify the corner.

**NOTE** Bearings are referenced to polaris observations.

**PLAT OF SURVEY FOR CERTIFIED LAND CORNER RESTORATION AND ESTABLISHMENT.**

BEING THE CORNERS FOR THE SOUTH PART OF GOVERNMENT LOT 1  
SECTION 15, T41N, R13E, FOURTH PRINCIPAL MERIDIAN  
FOREST COUNTY, STATE OF WISCONSIN



**L E G E N D**

- | Boundary line marked to standard.
- 2 1/2 inch diameter aluminum pipe monument, 36 inches long with an aluminum cap stamped to identify the corner.
- General Land Office Dependent Resurvey Monuments.

**NOTE** Bearings are referenced to polaris observations.

Stock No. 26273

Sheet 3 of 6

## SURVEY NOTES

This survey was made by John C. Schulke, a Registered Land Surveyor in the State of Wisconsin, for the U.S. Department of Agriculture, Forest Service. The purpose of the survey was for recovery, establishing, marking and perpetuating the corners and boundary lines of the U.S. Government Land on the perimeter and within Section 15, Township 41 North, Range 13 East, Fourth Principal Meridian, Forest County, Wisconsin.

The original Government subdivision survey of this township was made by Daugherty and McDill in 1865. A dependent resurvey done under the supervision of Mr. Veal was made and approved by the General Land Office in 1942. The control for this survey is based on the 1942 dependent resurvey.

The bearings between corner positions are true bearings as determined by reference to polaris observations. The accuracy of this survey exceeds the State requirement for closure of 1 in 3,000. Corners recovered or established by this survey are marked as described in the map legend. Each monumented corner is referenced to blazed, scribed, painted and tagged bearing trees. Tie bearings are magnetic, and not corrected for declination.

CORNERS RECOVERED AND RESTORED1. Closing Corner Common to Sections 10 and 15.

Corner monument recovered in place.

## Corner references recovered:

Sug. Maple	16"	S07°30'W	34.65 feet
Sug. Maple	19"	S85°W	56.34 feet
Steel sign post		SW	1.5 feet

## New corner references:

Sug. Maple	9"	S24°E	55.25 feet
Sug. Maple	13"	N04°W	24.10 feet

2. Quarter Corner Between Sections 10 and 15.

Corner monument recovered in place.

## Corner references recovered:

Maple	16"	N52°W	21.2 feet
Maple	19"	S42°E	1.88 feet

## New corner references:

Sug. Maple	5"	S46°W	15.55 feet
Sug. Maple	4"	N15°E	14.98 feet
Steel sign post		NE	1.5 feet

3. Section Corner Common to Sections 9, 10, 15 and 16.

Corner monument recovered in place.

## Corner references recovered:

Maple	12"	S60°E	30.65 feet
Maple	11"	S51°W	61.79 feet
Maple	16"	N58°W	57.59 feet
Maple stump	10"	N06°W	39.13 feet

## New corner references:

Maple	11"	N06°W	39.13 feet
Steel sign post		N78°W	0.82 feet

Stock No. 26273

Sheet 4 of 6

4. Quarter Corner Between Sections 15 and 16.  
Corner monument recovered in place and as described on Certified Land Corner Restoration form in the Forest County Records, Document #94559, in 1968.
5. Section Corner Common to Sections 15, 16, 21 and 22.  
Corner monument recovered in place and as described on Certified Land Corner Restoration form in the Forest County Records, Document #99460, in 1971.
6. Quarter Corner Between Sections 15 and 22.  
Corner monument recovered in place and as described on Certified Land Corner Restoration form in the Forest County Records, Document #99464, in 1971.
7. Section Corner Common to Section 14, 15, 22 and 23.  
Corner monument recovered in place and as described on Certified Land Corner Restoration form in The Forest County Records, Document #105824, in 1974.
8. Quarter Corner Between Sections 14 and 15.  
Corner monument recovered, leaning SE, reset monument firmly in the ground. Monument in the fence line running South and North and open field to the East. Corner fence post NW of monument and fence line running Westerly.

## Corner references recovered:

Cherry	10"	N55°W	18.36 feet
--------	-----	-------	------------

## New corner references:

Aspen	6"	S35°W	35.04 feet
Maple	6"	N47°W	57.55 feet
Maple	6"	N14°W	101.46 feet
Steel sign post		NW	1.0 foot

9. Meander Corner of Fraction Sections 14 and 15.  
Corner monument recovered in place. River bank 15 feet to the East and the corner fence post is 3 feet Southwest.

## Corner references recovered:

Twin W. Birch	16"	S45°W	15.77 feet
Poplar stub	18"	S01°E	130.35 feet

## New corner references:

Red Maple	6"	S24°E	7.54 feet
Balsam	10"	N32°W	11.08 feet
Red Maple	6"	N87°W	32.5 feet
Steel sign post		NW	1.5 feet

CORNERS ESTABLISHED

1. South Sixteenth Corner Between Sections 15 and 16.  
Corner position established at the midpoint and on line between the West quarter corner and the Southwest Section corner of Section 15.

## Corner references:

Red Maple	13"	S62°W	26.75 feet
Balsam	6"	N18°W	7.07 feet
Sug. Maple	18"	S57°E	13.70 feet
Steel sign post		SW	1.0 foot

Stock No. 26273

Sheet 5 of 6

2. Southwest Sixteenth Corner of Section 15.

Corner position is at the intersection of the straight lines between opposing sixteenth corners on the perimeter of the Southwest quarter of Section 15.

## Corner references:

Sug. Maple	4"	N71°W	42.02 feet
Balsam	5"	N26°E	40.62 feet
Spruce	17"	S16°E	18.69 feet
Steel sign post		SW	0.92 feet

3. West Sixteenth Corner Between Sections 15 and 22.

Corner position established at the midpoint and on line between the South quarter corner and the Southwest Section corner of Section 15. Monument 6" below the surface of the road on the South side.

## Corner references:

Power Pole	#N70-1113	N50°W	27.97 feet
Boundary sign post		North	26.69 feet
Do Not Disturb Mon. sign post		S19°E	13.77 feet

4. Center South Sixteenth Corner of Section 15.

Corner position established at the midpoint and on line between the South quarter corner and the Center quarter corner of Section 15.

## Corner references:

W. Birch	4"	S74°E	16.27 feet
W. Pine	16"	S43°W	46.51 feet
Tamarack	8"	North	32.25 feet
Steel sign post		NE	1.0 foot

5. Center Quarter Corner of Section 15.

Corner position established at the intersection of the straight lines between opposing quarter corners on the perimeter of Section 15.

## Corner references:

Spruce	7"	N07°E	14.08 feet
Spruce	8"	S54°W	17.7 feet
Spruce	7"	S49°E	26.57 feet
Steel sign post		NE	0.93 feet

6. Southeast Sixteenth Corner of Section 15.

Corner position is at the intersection of the straight lines between opposing sixteenth corners on the perimeter of the Southeast quarter of Section 15.

## Corner references:

W. Pine	32"	S44°E	47.92 feet
W. Birch	5"	N84°W	36.58 feet
Aspen	13"	N06°E	10.58 feet
Steel sign post		NW	1.2 feet

7. Center East Sixteenth Corner of Section 15.

Corner position established at the midpoint and on line between the East quarter corner and the Center quarter corner of Section 15.

## Corner references:

Tamarack	6"	N83°E	9.01 feet
W. Pine	12"	S20°E	7.46 feet
Black Spruce	5"	N35°W	41.07 feet
Steel sign post		NW	1.0 foot

Stock No. 26273

Sheet 6 of 6

8. Northeast Sixteenth Corner of Section 15.

Corner position is at the intersection of the straight lines between opposing sixteenth corners on the perimeter of the Northeast quarter of Section 15.

## Corner references:

W. Birch	12"	S06°W	36.76 feet
Tamarack	12"	N71°W	43.40 feet
Spruce	9"	S85°W	38.36 feet
Steel sign post		NW	1.0 foot

9. North Sixteenth Corner Between Sections 14 and 15.

Corner position established at the midpoint and on line between the East quarter corner and the Northeast Section corner of Section 15.

## Corner references:

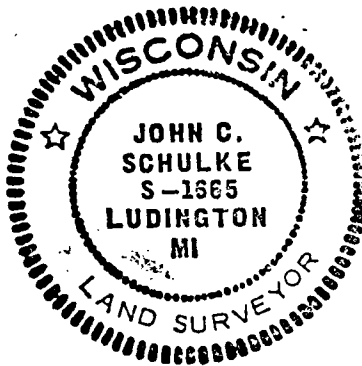
Balsam	4"	N42°W	31.55 feet
Balsam	6"	N81°W	22.31 feet
Balsam	6"	S43°W	42.75 feet
Steel sign post		NW	1.4 feet
Fence		West.	1.0 foot

## SURVEYOR'S AFFIDAVIT

State of Wisconsin )  
County of Forest )<sup>ss</sup>

I, John C. Schulke, a Cadastral Surveyor, and a Registered Land Surveyor in the State of Wisconsin, hereby certify that I have surveyed and subdivided Section 15, Township 41 North, Range 13 East, Fourth Principal Meridian, State of Wisconsin.

The plat map and survey notes herewith are a correct representation of the land surveyed and subdivided. I have surveyed and subdivided said section in accordance with the rules for the survey of the public lands and with the statutes of the State of Wisconsin.

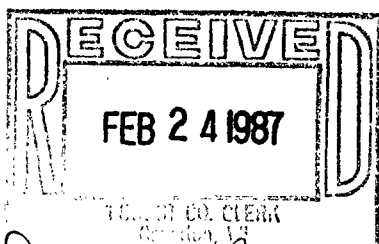


John C. Schulke  
4604 South U.S.-31  
Ludington, MI 49431  
R.L.S. State of Wisconsin  
Date of Survey 1985  
Certificate S-1665

*John C. Schulke*

Plat ready for filing: *N. Frank Haubry*

District Ranger



*Dora C. James*  
Forest Co. Clerk