

Stock No. 26273

Court House

FOREST CO SURVEYOR

FILE # 401430-19810000

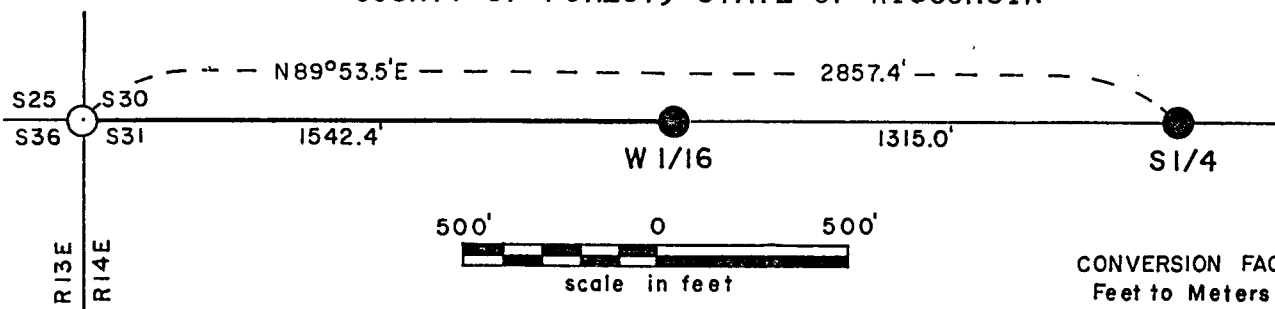
DATE BY

Sheet 1 of 2

CERTIFIED LAND CORNER RESTORATION CERTIFICATE

BEING THE WEST SIXTEENTH CORNER BETWEEN THE
SOUTH QUARTER CORNER AND THE SOUTHWEST SECTION CORNER
OF SECTION 30, TOWNSHIP 40 NORTH, RANGE 14 EAST,
FOURTH PRINCIPAL MERIDIAN

COUNTY OF FOREST, STATE OF WISCONSIN



CONVERSION FACTORS:
Feet to Meters - 0.304801
Meters to Feet - 3.280833

LEGEND

- Boundary line marked to standard.
- - 2½ inch diameter aluminum pipe monument, 30 inches long with an aluminum cap stamped to identify the corner.
- - Corner monumented and recorded Document No. 118085 September, 1979.

SURVEY NOTES

This survey of the line between the southwest section corner and the south quarter corner of Section 30, T40N, R14E, Fourth Principal Meridian was made by the U.S. Department of Agriculture, Forest Service. All bearings are true bearings referenced to solar observations.

CORNERS RECOVERED

1. Section Corner Common to Sections 25, 30, 31 and 36

Previously recorded as Document No. 118085, September 1979.

CORNER RESTORED

1. Quarter Corner between Sections 30 and 31

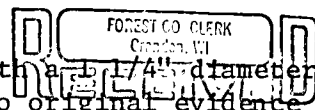
This corner was originally established in 1865 by Wm. E. Daugherty.

Corner references:

| | | |
|-----------|-------|---------|
| Birch 10" | N18°W | 25 Lks. |
| Fir 10" | S 1°E | 14 Lks. |

Evidence Found:

The above corner position was found to be marked with a 2½ inch diameter iron pipe, 3 feet long with a hand forged point. No original evidence of a post or bearing trees was found.



JAN 8 1982

Dora C. James

Stock No. 26273

Sheet 2 of 2

Similar iron pipes were found at the section corner to 25, 30, 31, and 36, Ranges 13 and 14 East, the quarter corner between 31 and 36, Ranges 13 and 14 East, the township section corner to 1, 6, 31, and 36, Townships 39 and 40 North, Ranges 13 and 14 East, the quarter corner between Sections 31 and 36, Townships 39 and 40 North and the section corner to Sections 5, 6, 31, and 32, Townships 39 and 40 North.

The iron pipe found at each of these corners closely tied with recorded bearing and distances to original bearing tree evidence found.

I have accepted the position of the iron pipe as found to be the best available evidence of the quarter corner between sections 30 and 31 supported by the survey as shown on the plat.

New Corner references:

| | | |
|-----------------|-----------|------------|
| Spruce 22" | S62°E | 44.85 Feet |
| Maple 10" | S12°W | 72.82 Feet |
| Steel Sign Post | Southeast | .50 Foot |

CORNER ESTABLISHED1. West Sixteenth Corner between Sections 30 and 31

Corner position established by proportionate distance and on line between the southwest section corner and the south quarter corner of Section 30.

Corner references:

| | | |
|-----------------|-------|------------|
| Spruce 24" | S24°E | 41.77 Feet |
| Cherry 11" | S56°W | 31.02 Feet |
| Steel Sign Post | South | 0.50 Feet |

SURVEYOR'S AFFIDAVIT

State of Wisconsin)
County of Forest) ss

I, William B. Cochrane, Land Surveyor, U.S. Forest Service and a registered land surveyor in the State of Wisconsin, hereby certify that I have surveyed the line between the southeast section corner and the south quarter corner of Section 30, Township 40 North, Range 14 East, Fourth Principal Meridian, State of Wisconsin.

The plat map and survey notes are a correct representation of the corners recovered and corners established.

William B. Cochrane

Land Surveyor, U.S. Forest Service
R.L.S. State of Wisconsin
Certificate S-1107

Date of Survey: 1981