

Stock No. 26273

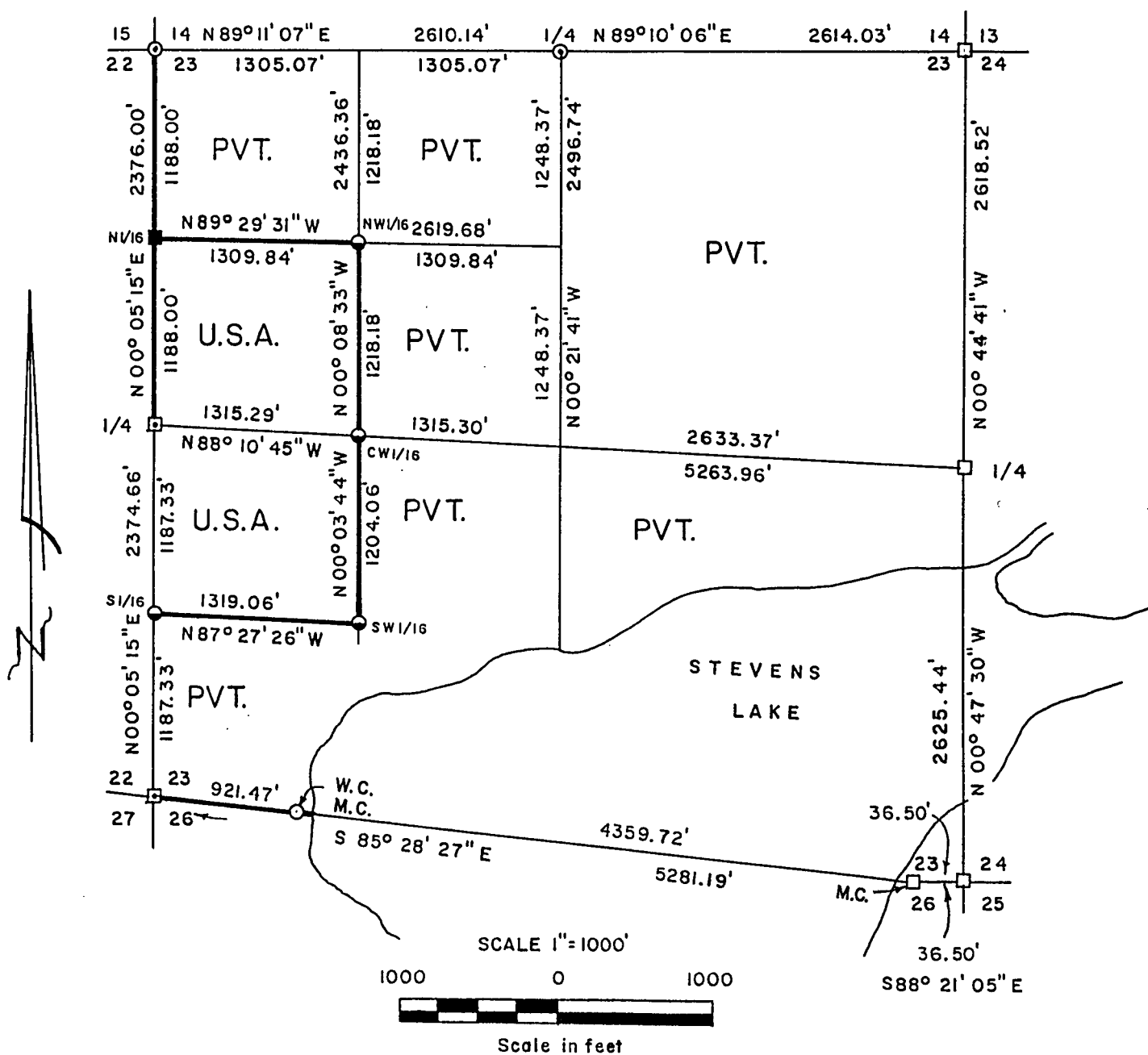
FOREST CO SURVEYOR

FILE # 401423-1990026

DATE BY

# PLAT OF SURVEY FOR CERTIFIED LAND CORNER RESTORATION AND ESTABLISHMENT

BEING THE CORNERS FOR THE NW 1/4-SW 1/4, SW 1/4-NW 1/4 OF SECTION 23,  
T.40N. R.14E., FOURTH PRINCIPAL MERIDIAN  
COUNTY OF FOREST, STATE OF WISCONSIN



- Concrete monument with brass cap and iron post in center set by General Land Office 1945 Dependent resurvey.
- ▣ 2 1/2 inch I.D. iron pipe monument with a brass cap set by General Land Office 1950 Dependent resurvey.
- 2 inch I.D. iron pipe monument with a brass cap set by U.S.F.S.
- ⊙ 2 1/2 inch diameter aluminum pipe monument, 36 inches long buried in road with an aluminum cap stamped to identify the corner.
- 2 1/2 inch diameter aluminum pipe monument, 60 inches long with an aluminum cap stamped to identify the corner.
- 1 inch diameter aluminum pipe monument, 36 inches long with an aluminum cap stamped to identify the corner.
- Boundary line marked to Forest Service standards.

Note: Bearings are true bearings as referenced to the East Section line of Section 16 as determined by solar observation from previous survey of Section 16 by Gary L. Pisoni R.L.S. in 1986.

Stock No. 26273

Sheet 2 of 4

SURVEY NOTES

This survey was made by Gary L. Pisoni, a Registered Land Surveyor in the State of Wisconsin, for the U.S.D.A., Forest Service, for the purpose of recovering, restoring, establishing, marking, and perpetuating the corners and boundary lines of U.S. Government Land on the perimeter and within Section 23, Township 40 North, Range 14 East, Fourth Principal Meridian, Forest County, State of Wisconsin, as shown on the plat map herewith.

The Original Government Sub-division of this township was done in 1865 by William E. Daugherty. The corners recovered by the Dependent Resurvey in 1945 and 1950 marking the perimeter of Section 23 were used as control for the sub-division survey of Section 23.

The bearings between corner positions are true bearings referenced to the East Section line of Section 16 as determined by solar observation from previous survey of Section 16 in 1986 by Gary L. Pisoni R.L.S.

The accuracy of this survey exceeds the State requirements of 1 in 3000.

The field notes and a copy of the Plat of Survey are on file in the Forest Supervisor's Office at Rhinelander, Wisconsin.

The U.S. Government acquired title to the lands in Section 23 in 1935.

CORNERS RECOVERED AND RESTORED1. Northeast Section Corner

Corner position restored in 1945 by Dependent Resurvey and in 1981 by William B. Cochrane RLS with the U.S. Forest Service.

Corner References:

Birch	10"	N49 30'E	23.76 feet
Birch	11"	S47 30'E	32.34 feet
Spruce	9"	S74 15'W	12.54 feet
Spruce	6"	N28 W	45.61 feet
Wood sign post		NW	2.0 feet

2. East Quarter Corner

Corner position restored in 1945 by Dependent Resurvey and in 1981 by William B. Cochrane RLS with the U.S. Forest Service.

1945 Corner References:

Cedar	9"	N47 E	19.95 feet
Cedar	12"	N33 E	34.70 feet

1981 Corner Reference:

Steel sign post		North	0.50 feet
-----------------	--	-------	-----------

3. Southeast Section Corner

Corner position restored in 1945 by Dependent Resurvey and a previously recorded Document No. 106882, March 31, 1975.

4. East Meander Corner Between Sections 23 and 26

Corner position restored in 1945 by Dependent Resurvey.

1945 Corner References:

Cedar	8"	N03 E	12.54 feet
Hemlock	9"	S66 E	11.55 feet

Stock No. 26273

Sheet 3 of 4

5. West Meander Corner Between Sections 23 and 26

1945 Dependent Resurvey monument missing. Reset corner position with an aluminum capped pipe monument on line between the East Meander Corner and the Southwest Section corner.

New Corner References:

Cedar	13"	N18 W	32.42 feet
Spruce	11"	S53 W	60.87 feet
White Birch	9"	N89 W	37.46 feet
Steel sign post		N85 E	0.82 feet
Steel sign post		South	0.82 feet

6. Southwest Section Corner

Corner position restored in 1950 by Dependent Resurvey.

1950 Corner References Recovered:

Cedar	17"	N65 E	50.82 feet
Cedar	20"	S32 15'E	104.28 feet
Yellow Birch	28"	S63 W	50.16 feet
Cedar	16"	N81 45'W	93.06 feet

New Corner Reference:

Steel sign post		S47 E	1.05 feet
-----------------	--	-------	-----------

7. West Quarter Corner

Corner position restored in 1950 by Dependent Resurvey and in 1963 by Jean Resvick RLS with the U.S. Forest Service.

1950 Corner Reference:

Sugar Maple	9"	S29 W	12.91 feet
-------------	----	-------	------------

1963 Corner Reference:

Yellow Birch	13"	N35 30'E	12.75 feet
--------------	-----	----------	------------

New Corner References:

Sugar Maple	10"	S37 E	11.38 feet
Steel sign post		South	1.3 feet

8. Northwest Section Corner

Corner position restored in 1944-45 by Dependent Resurvey and in 1967 by Jean Resvick RLS with the U.S. Forest Service and in 1989 replaced damaged Dependent Resurvey monument with an aluminum capped pipe monument.

1944 Corner Reference:

Witness Corner Monument		S00 05'15"W	26.40 feet
-------------------------	--	-------------	------------

1989 Corner References:

Red Pine	9"	N62 W	84.98 feet
Black Cherry	12"	S16 E	79.51 feet
Black Cherry	12"	S04 W	102.24 feet

9. North Quarter Corner

Corner position restored in 1945 by Dependent Resurvey and in 1989 replaced damaged Dependent Resurvey monument with an aluminum capped pipe monument.

1945 Corner Reference:

Witness Corner Monument		South	33.00 feet
-------------------------	--	-------	------------

1989 Corner References:

Sugar Maple	8"	N48 E	57.53 feet
Sugar Maple	6"	S52 W	51.18 feet
Sugar Maple	6"	N07 W	39.03 feet

10. North Sixteenth Corner Between Sections 22 and 23.

Corner position established in 1964 by Jean Resvick RLS with the U.S. Forest Service.

1964 Corner References:

Aspen	6"	N69 59'E	92.10 feet
Spruce	4"	S88 43'E	67.75 feet

Stock No. 26273

Sheet 4 of 4

CORNERS ESTABLISHED1. Northwest Sixteenth Corner

Corner position established at the intersection of straight lines between opposing sixteenth corner positions on the perimeter of the Northwest quarter of the section.

## Corner References:

Sugar Maple	10"	N47 E	12.33 feet
Sugar Maple	10"	N51 W	8.87 feet
Steel sign post		S89 W	1.10 feet

2. Center West Sixteenth Corner

Corner position established at midpoint and on line between the West quarter corner and the Center quarter corner.

## Corner References:

Sugar Maple	9"	S58 W	7.89 feet
Sugar Maple	11"	N33 W	14.72 feet
Iron Pipe	3/4" dia.	S68 12'E	0.27 feet
Steel sign post		N75 W	1.08 feet

3. Southwest Sixteenth Corner

Corner position established at the intersection of straight lines of the average mean bearings along the North/South and East/West 1/16 lines in the Southwest quarter of the section.

## Corner References:

Basswood	10"	N08 E	27.23 feet
Sugar Maple	11"	N38 W	24.44 feet
Angle Point #4		S07 E	14.85 feet
Steel sign post		N66 E	1.34 feet

4. South Sixteenth Corner Between Sections 22 and 23

Corner position established at midpoint and on line between the Southwest Section corner and the West quarter corner.

## Corner References:

Red Maple(double)	9"	N10 E	2.22 feet
Hemlock	30"	S44 W	19.54 feet
Iron Pipe	1 1/4" dia.	S38 W	8.13 feet
Iron Pipe	3/4" dia	N56 18'W	0.36 feet
Steel sign post		N60 E	1.12 feet

SURVEYOR'S CERTIFICATE

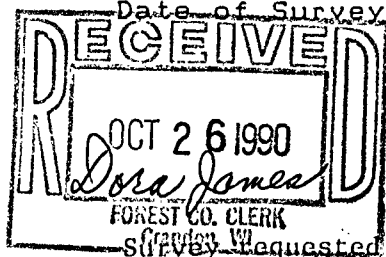
State of Wisconsin)

County of Forest )

I, Gary L. Pisoni, a Cadastral Surveyor and a Registered Land Surveyor in the State of Wisconsin, hereby certify that I have surveyed and sub-divided Section 23, Township 40 North, Range 14 East, Fourth Principal Meridian, State of Wisconsin.

The plat map and survey notes herewith are a correct representation of the land surveyed and divided. I have surveyed and sub-divided said section in accordance with the rules for the survey of public lands and statutes of the State of Wisconsin.

Date of Survey: 1989



*Gary L. Pisoni*  
Cadastral Surveyor  
R.L.S. State of Wisconsin  
Certificate S-1634

Survey requested by, *Dora Jones*

District Ranger

Date *9-18-90*