

Stock No. 26273

FOREST CO SURVEYOR

FILE # 401414-19890412

DATE _____ BY _____

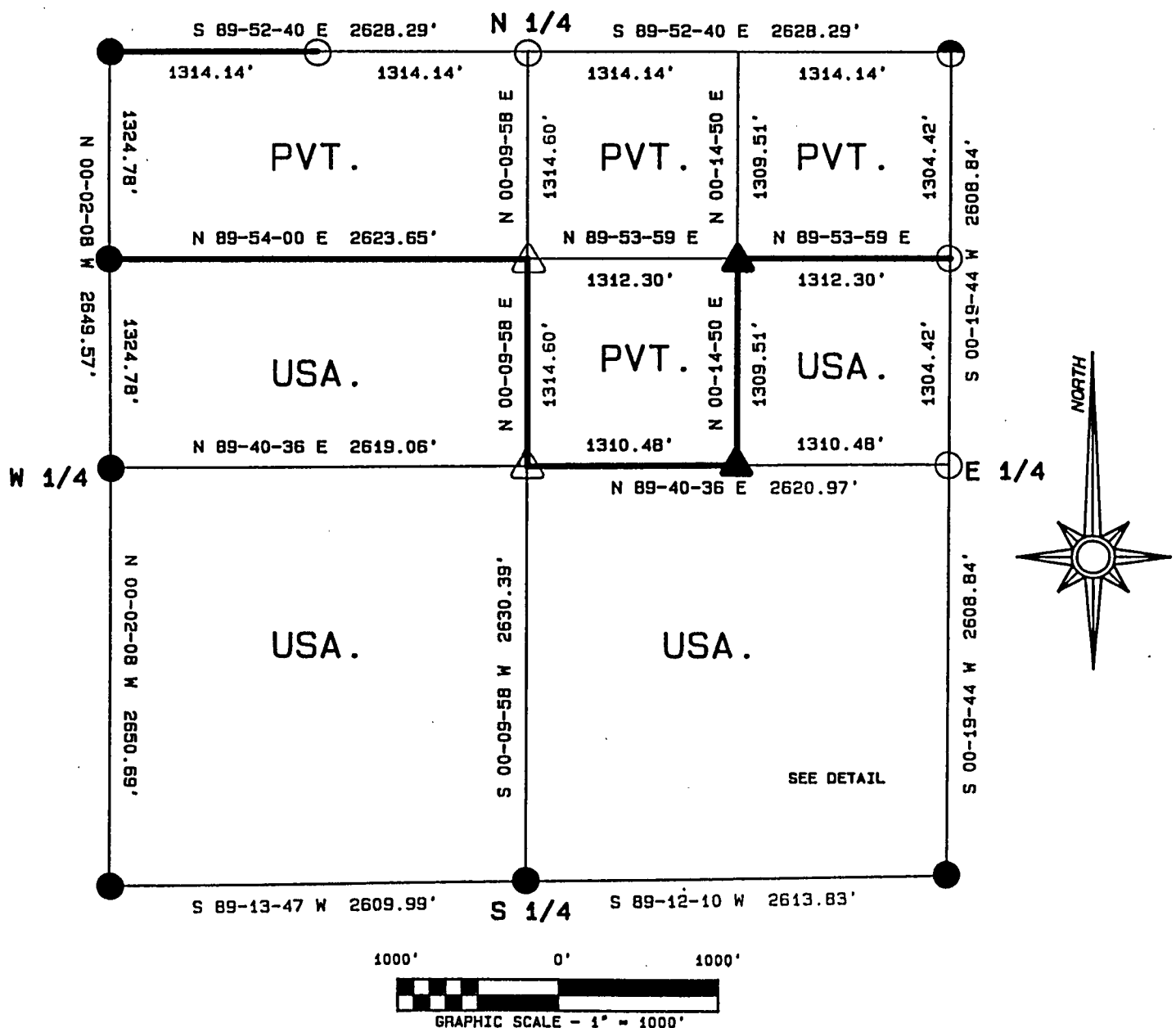
page 1 of 4

PLAT OF SURVEY FOR CERTIFIED LAND CORNER RESTORATION AND ESTABLISHMENT

BEING THE CORNERS FOR THE N 1/2 OF THE NW 1/4, THE SE 1/4 OF
THE NE 1/4, AND THE S 1/2 OF THE SECTION

SECTION 14 TOWNSHIP 40 NORTH, RANGE 14 EAST.

COUNTY OF FOREST, STATE OF WISCONSIN



LEGEND

- 6 INCH CONCRETE MONUMENT 36 INCHES LONG WITH BRASS CAP EMBEDDED IN TOP.
- △ 1 INCH DIAMETER ALUMINUM PIPE MONUMENT 36 INCHES LONG WITH AN ALUMINUM CAP.
- ▲ 1 INCH DIAMETER ALUMINUM PIPE MONUMENT 60 INCHES LONG WITH AN ALUMINUM CAP.
- 2 1/2 INCH DIAMETER ALUMINUM PIPE MONUMENT 36 INCHES LONG WITH AN ALUMINUM CAP.
- ◐ 2 1/2 INCH DIAMETER ALUMINUM PIPE MONUMENT 60 INCHES LONG WITH AN ALUMINUM CAP.
- BOUNDARY LINE MARKED TO FOREST SERVICE STANDARD.

Stock No. 26273

T40N R14E - SECTION 14

page 2 of 4

SURVEY NOTES

This survey was made by the U.S. Department of Agriculture, Forest Service, for the purpose of recovering, restoring, establishing, marking, and perpetuating the corners and boundary lines of U.S. Government Land on the perimeter and within Section 14, Township 40 North, Range 14 East, Fourth Principal Meridian, Forest County, State of Wisconsin, as shown on the Plat Map herewith.

The U.S. Government Land within Section 14 was acquired in 1935 and 1972.

The Original Government Subdivision of this township was made in 1865.

The bearings between corner positions are true bearings as determined by reference to solar observations. The accuracy of this survey exceeds the State requirement for closure of 1 in 3,000. Corners recovered or established by this survey are marked as described in the map legend. Each monumented corner is referenced to blazed, scribed, painted and tagged bearing trees. Tie bearings are magnetic, and not corrected for declination.

The field notes and a copy of the Plat of Survey are on file in the Forest Supervisor's Office at Rhinelander, Wisconsin.

CORNERS RECOVERED AND RESTORED1. Northeast Section Corner

Corner position recovered as restored by William Cochrane in 1981 from remains of original bearing tree stumps and recovered 4"x4" wood post.

Corner References:

Spruce	6"	S05°E	54.11 feet
Spruce	6"	S47°W	36.40 feet
Spruce	5"	N30°W	58.46 feet
Steel Sign Post		North	0.50 feet

2. East Quarter Corner

Corner position recovered as restored by William Cochrane in 1981 at proportionate distance and on line between section corners North and South.

Corner References:

Spruce	9"	N60°W	11.67 feet
Spruce	11"	N11°E	13.85 feet
Steel Sign Post		Northeast	0.50 feet

3. Southeast Section Corner

Corner position recovered as restored by Jean Resvick in 1967 from remains of the 1944 Dependent Resurvey.

Corner References:

Spruce	6"	N28°W	45.61 feet
Birch	10"	N49°E	23.76 feet
Birch	11"	S47°W	32.34 feet
Spruce	9"	S74°W	12.54 feet
Wood Sign Post		Northwest	2.00 feet

4. South Quarter Corner

Corner position recovered as restored by William Cochrane in 1981, from recovered 1944 Dependent Resurvey Monument.

Corner References:

4"x4" Wood Post		North	33.00 feet
-----------------	--	-------	------------

Witness Monument, 5" diameter concrete monument 3 feet long with brass cap.

References to Witness Monument:

Elm	15"	N50°E	73.26 feet
Maple	7"	S08°E	25.74 feet
Steel Sign Post		South	0.50 feet

Stock No. 26273

T40N R14E - SECTION 14

page 3 of 4

5. Southwest Section Corner

Corner position recovered as restored by Jean Resvick in 1967 from a recovered 1944 Dependent Resurvey Monument.

Corner References:

Witness Monument 6" diameter concrete monument with brass cap.

References to Witness Monument:

Cherry	12"	S25°E	55.44 feet
Cherry	12"	S05°W	75.90 feet
4"x4" Wood Post		Southwest	1.50 feet

6. West Quarter Corner

Corner position recovered as restored by Jean Resvick in 1967 from a recovered 1944 Dependent Resurvey Monument.

Corner References:

Witness Monument 6" diameter concrete monument with brass cap.

References to Witness Monument:

Spruce	8"	N45°E	6.84 feet
Spruce	8"	S62°E	10.64 feet
4"x4" Wood Post		Northeast	1.50 feet

7. Northwest Section Corner

Corner position recovered as restored by Jean Resvick in 1969 from recovered 1944 Dependent Resurvey Monument.

Corner References:

Spruce	9"	N31°E	118.84 feet
Elm (Dead)	5"	S42°W	65.09 feet
Spruce	6"	S64°W	55.49 feet
Spruce	8"	N39°W	48.35 feet

8. North Quarter Corner

Corner position is restored at mid-point and on line between the Northwest and Northeast Section Corners.

Corner References:

Spruce	5"	N52°E	12.80 feet
Spruce	5"	S22°E	21.80 feet
Steel Sign Post		West	1.00 feet

CORNERS ESTABLISHED1. West Sixteenth Corner between Sections 11 and 14

Corner position established at mid-point and on line between the North Quarter Corner and the Northwest Section Corner.

Corner References:

Aspen	10"	N82°W	60.16 feet
W. Birch	5"	N22°W	53.82 feet
Steel Sign Post		North	1.00 feet

2. North Sixteenth between Sections 14 and 15

Corner position is established at mid-point and on line between the West Quarter Corner and the Northwest Section Corner. Corner position was set by Resvick in 1967.

Corner References:

Spruce	9"	S53°E	32.23 feet
W. Birch	13"	S89°W	31.74 feet
4"x4" Wood Sign Post		East	25.50 feet

3. Center North Sixteenth Corner

Corner position is established at mid-point and on line between the North Quarter Corner and the Center Quarter Corner.

Corner References:

Spruce	6"	S36°W	19.20 feet
Spruce	7"	N58°W	24.87 feet
Steel Sign Post		Southeast	0.20 feet

Stock No. 26273

T40N R14E - SECTION 14

page 4 of 4

4. Northeast Sixteenth Corner

Corner position is established at the intersection of straight lines between opposing sixteenth corner positions on the perimeter of the northeast quarter of the section.

Corner References:

Spruce	5"	N18°E	22.02 feet
Spruce	5"	S64°W	22.42 feet
Steel Sign Post		Northwest	1.00 feet

5. North Sixteenth Corner between Sections 13 and 14

Corner position is established at mid-point and on line between the Northeast Section Corner and the East Quarter Corner.

Corner References:

Maple	6"	S42°W	29.15 feet
Maple	6"	N70°W	28.98 feet
Steel Sign Post		Northeast	1.00 feet

6. Center Quarter Corner

Corner position is established at the intersection of straight lines between opposing Quarter Corner positions on the perimeter of the Section.

Corner References:

Maple	7"	N86°E	28.80 feet
Maple	6"	S17°E	18.58 feet
Steel Sign Post		Southeast	1.00 feet

7. Center East Sixteenth Corner

Corner position is established at mid-point and on line between the Center Quarter Corner and the East Quarter Corner.

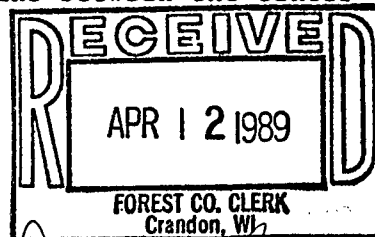
Corner References:

There are no references available.

SURVEYOR'S AFFIDAVIT

State of Wisconsin)

County of Forest) ss



Dora C. James

I William B. Cochrane, Land Surveyor, U. S. Forest Service, and a Registered Land Surveyor in the State of Wisconsin, hereby certify that I have surveyed and subdivided Section 14, Township 40 North, Range 14 East, Fourth Principal Meridian, State of Wisconsin.

The plat map and survey notes herewith are a correct representation of the land surveyed and divided. I have surveyed and subdivided said section in accordance with the rules for the survey of the public lands and with the statutes of the State of Wisconsin.



William B. Cochrane

Land Surveyor, U.S. Forest Service
R. L. S. State of Wisconsin
Certificate S-1107

Date of survey: 1987

Survey requested by;

Edward [Signature]
District Ranger

3-22-89
Date