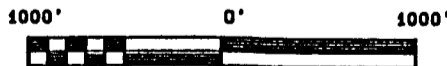
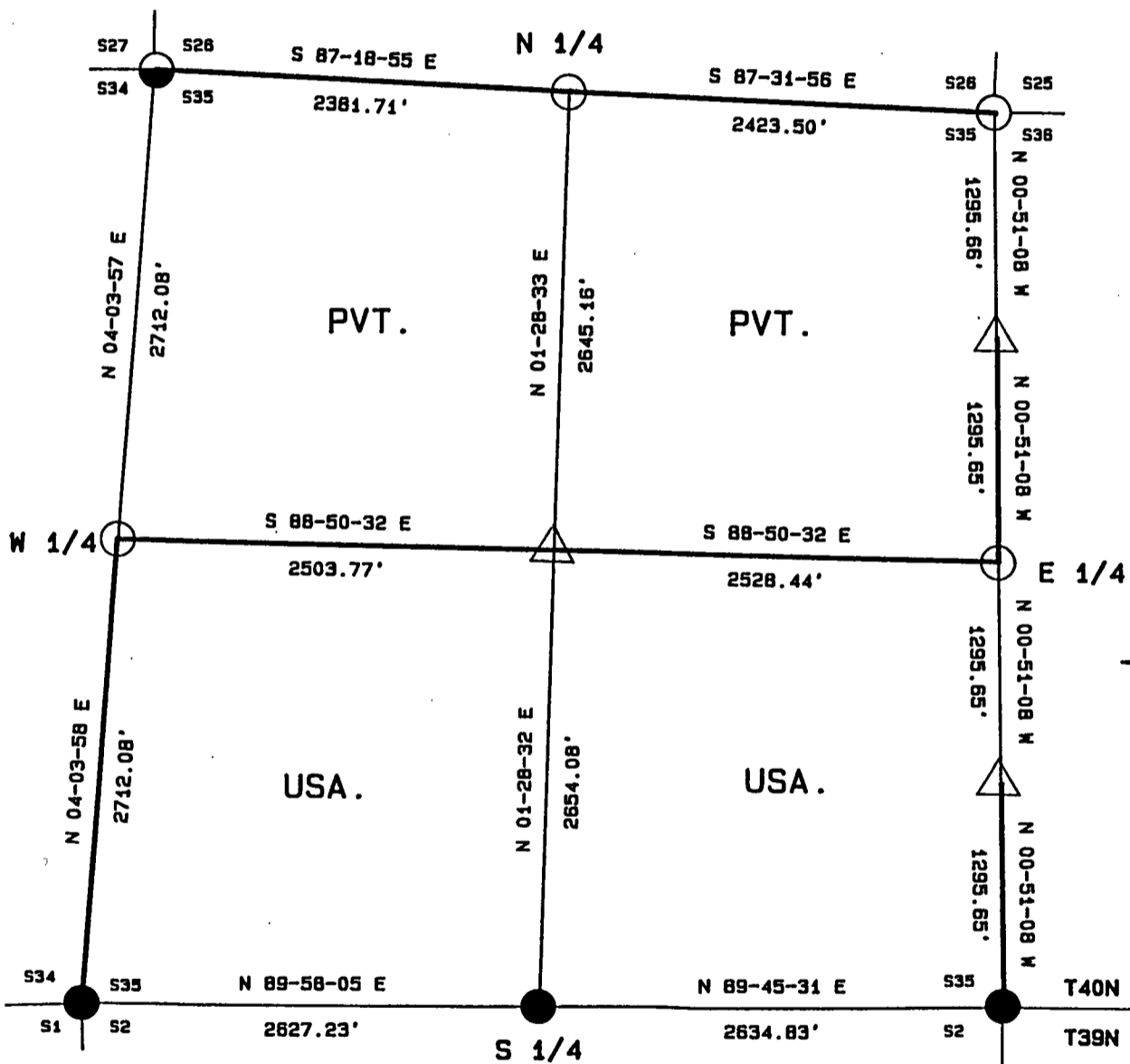


PLAT OF SURVEY FOR CERTIFIED LAND CORNER
RESTORATION AND ESTABLISHMENT






BEING THE CORNERS FOR THE NORTH 1/2 OF THE SECTION,
AND THE CORNERS ON THE PERIMETER OF THE SECTION.

SECTION 35, TOWNSHIP 40 NORTH RANGE 13 EAST.

COUNTY OF FOREST, STATE OF WISCONSIN.



LEGEND

-  2 1/2 INCH DIAMETER GALVANIZED IRON PIPE MONUMENT WITH BRASS CAP.
-  1 INCH DIAMETER ALUMINUM PIPE MONUMENT 36 INCHES LONG WITH AN ALUMINUM CAP.
-  2 1/2 INCH DIAMETER ALUMINUM PIPE MONUMENT 36 INCHES LONG WITH AN ALUMINUM CAP.
-  2 1/2 INCH DIAMETER ALUMINUM PIPE MONUMENT 60 INCHES LONG WITH AN ALUMINUM CAP.
-  BOUNDARY LINE MARKED TO FOREST SERVICE STANDARD

Stock No. 26273

T40N R13E - SECTION 35

Page 2 of 4

SURVEY NOTES

This survey was made by the U.S. Department of Agriculture, Forest Service for the purpose of recovering, restoring, establishing, marking, and perpetuating the corners and boundary line of U.S. Government land on the perimeter and within Section 35, Township 40 North, Range 13 East, Fourth Principal Meridian, Forest County, State of Wisconsin as shown on the plat map herewith.

The Original Government Sub-division of this township was done in 1865 by William E. Daugherty.

The U.S. Government land within Section 35 was acquired in 1935.

The bearings between corner positions are referenced to the East line of Section 25 as previously surveyed. No curvature corrections have been applied to the bearings in Section 35. The accuracy of this survey exceeds the State of Wisconsin requirement for closure of 1 part in 3000. Corners recovered or established by this survey are marked as described in the map legend. Each monumented corner is referenced to blazed, scribed, painted and tagged bearing trees. Tie bearings to the bearing trees are magnetic and are not corrected for declination.

The field notes and a copy of the plat of survey are on file in the Forest Service Supervisor's Office at Rhinelander, Wisconsin and the District Ranger's Office at Florence, Wisconsin.

CORNERS RECOVERED AND RESTORED1. Northeast Section Corner

Corner position restored from acceptance of an old cedar fence corner with a Forest Service location tag nailed to the post. This position agrees with local usage and the improvements near this corner.

Corner References:

Spruce	12"	N 65° E	25.82 feet
Aspen	6"	S 72° E	19.98 feet
Aspen	9"	N 4° W	12.40 feet
No available bearing tree in the Southwest quadrant.			
Local Corner Iron Pipe		S 89° 51' E	160.95 feet
Steel Sign Post		West	25.00 feet

2. East Quarter Corner

Corner position restored at midpoint and on line between the Northeast and Southeast section corners.

1989 Corner References:

Maple	12"	N 78° E	13.43 feet
Maple	11"	S 5° E	21.87 feet
Local Corner Iron Pipe		S 88° 37' E	81.15 feet
Steel Sign Post		East	0.50 feet

3. Southeast Section Corner

Corner position restored from a Dependent resurvey in 1978-1981 by Gary L. Kratz and Michael J. Avery.

1978 Corner References Recovered:

Sugar Maple	13"	S 58° E	53.24 feet
Sugar Maple	8"	N 65° W	70.58 feet

Recovered Corner References set by Gary L. Pisoni, RLS in 1990:

Sugar Maple	7"	N 52° E	35.82 feet
Sugar Maple	6"	S 56° E	39.92 feet

Stock No. 26273

T40N R13E - SECTION 35

Page 3 of 4

4. South Quarter Corner

In 1964, Jean Resvick, RLS U.S.F.S. found the original bearing tree stumps and set a 2 inch diameter iron pipe with a brass cap.

1964 Corner References Recovered:

Tamarack	9"	S 18° E	14.26 feet
Tamarack	10"	N 45° E	28.90 feet
Recovered Corner References set by Gary L. Pisoni, RLS in 1990:			
Tamarack	7"	S 60° W	24.28 feet
Steel sign post		N 17° W	0.70 feet

5. Southwest Section Corner

Corner position restored from a Dependent resurvey in 1978-1981 by Gary L. Kratz and Michael J. Avery from acceptance of a 2 1/2" diameter iron pipe which is locally accepted as the corner position.

1978 Corner References:

Basswood	14"	N 81° E	18.80 feet
Basswood	13"	S 25° E	23.72 feet
Basswood	13"	S 45° W	48.85 feet
Sugar Maple	12"	N 71° W	42.81 feet
Steel sign post		Northeast	1.00 feet

6. West Quarter Corner

Corner position restored at midpoint and on line between the Southwest and Northwest section corners.

Corner References:

Cedar	9"	S 14° E	33.87 feet
Cedar	9"	S 54° W	18.36 feet
Steel Sign Post		Southeast	0.75 feet

7. Northwest Section Corner

Corner position restored from acceptance of a wood post with scribing visible. The post was set from a 1940 survey and has been accepted as the best remaining evidence of the corner position.

Corner References:

Black Spruce	5"	N 69° E	12.56 feet
Black Spruce	4"	S 6° W	42.03 feet
Black Spruce	5"	S 86° W	47.02 feet
Black Spruce	3"	N 50° W	27.30 feet
Steel Sign Post		Southwest	0.75 feet

8. North Quarter Corner

Corner position restored from acceptance of a 1 1/4 inch diameter iron pipe which replaced a squared wood post with scribing faintly visible from a 1940 survey and has been accepted as the best remaining evidence of the corner position.

Corner References:

Northeast corner of a cabin		S 10° W	68.18 feet
Maple	8"	N 42° W	26.77 feet
Steel sign post		North	0.50 feet

CORNERS ESTABLISHED1. North Sixteenth Corner Between Sections 35 and 36

Corner position established at midpoint and on line between the East quarter corner and the Northeast section corner.

Corner References:

Maple	12"	N 10° E	29.55 feet
Maple(South Fork)	7"	S 83° E	13.78 feet
Local Corner Iron Pipe		S 89° 26' E	121.05 feet
Steel sign post		Northwest	0.50 feet

Stock No. 26273

T40N R13E - SECTION 35

Page 4 of 4

2. South Sixteenth Corner

Corner position established at the midpoint and on line between the Southeast section corner and the East quarter corner.

Corner References:

Maple	5"	West	36.14 feet
Maple	7"	N 24° W	32.25 feet
Steel sign Post		North	1.00 feet

3. Center Quarter Corner

Corner position established at the intersection of straight line between opposing quarter corners on the perimeter of the section.

Corner References:

Spruce	11"	N 72° E	10.58 feet
Spruce	12"	S 62° E	38.73 feet
Steel sign post		North	0.75 feet

SURVEYOR'S AFFIDAVIT

State of Wisconsin)

)ss

County of Forest)

I, William B. Cochrane, Land Surveyor, U.S.D.A. Forest Service and a Registered Land Surveyor in the State of Wisconsin, hereby certify that I have surveyed and sub-divided Section 35, Township 40 North Range 13 East, Fourth Principal Meridian, Forest County, State of Wisconsin.

The plat map and survey notes herewith are a correct representation of the land surveyed and sub-divided. I have surveyed and sub-divided said section in accordance with the rules for the Survey of Public Lands and the Statutes of the State of Wisconsin.

William B. Cochrane
Land Surveyor, U.S.D.A. Forest Service
R.L.S. State of Wisconsin
Certificate S-1107



Date of Survey: 1991

Survey requested by:

Sam Morkie
District Ranger

9/28/92
Date

