

Stock No. 26273

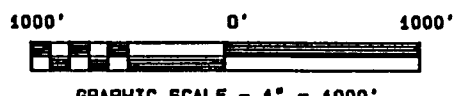
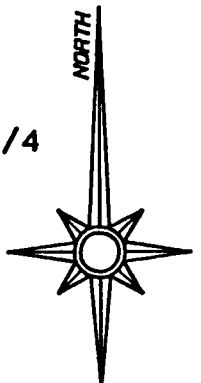
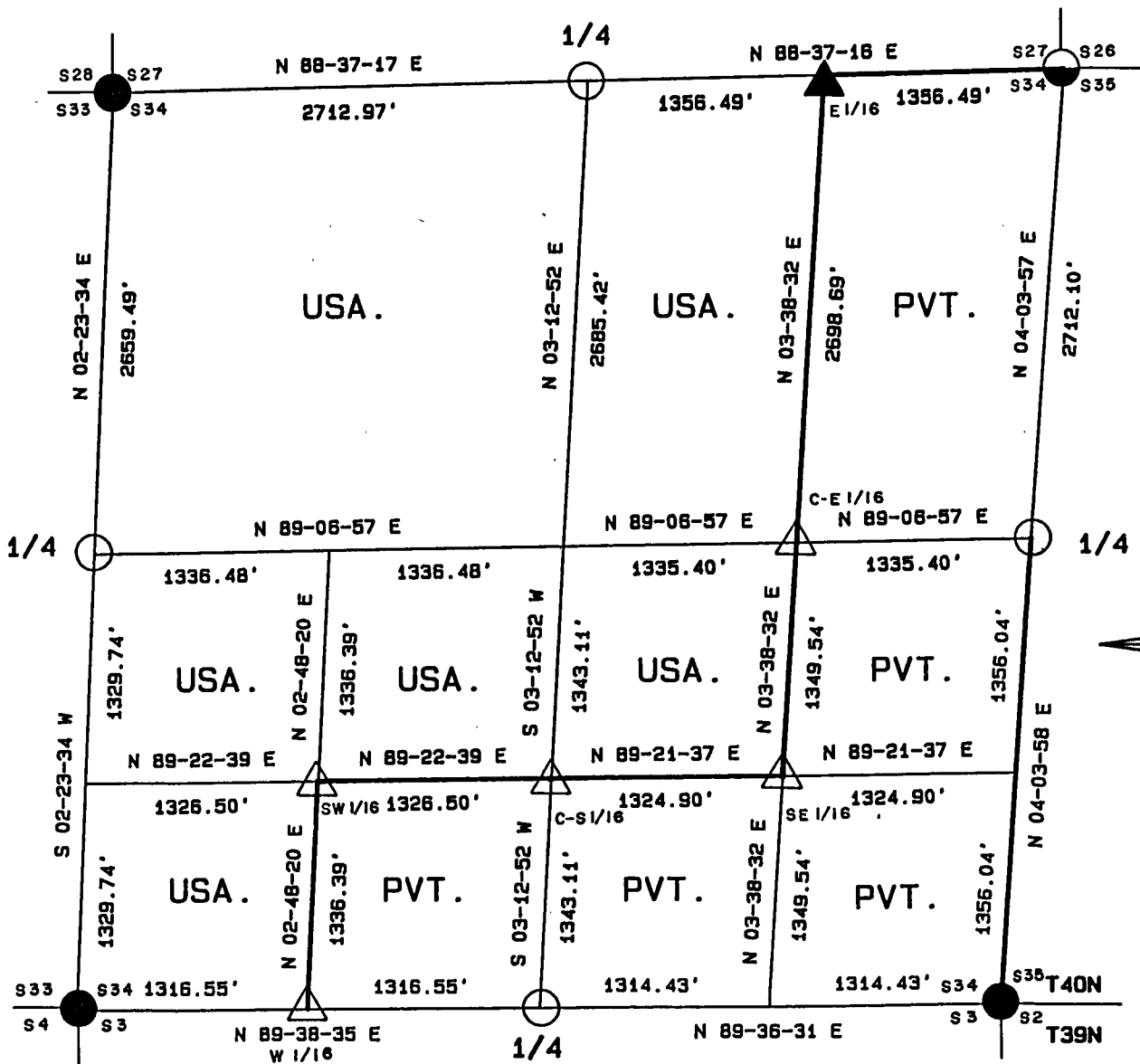
FOREST CO SURVEYOR
FILE # 401334-19920928
DATE _____ BY _____

PLAT OF SURVEY FOR CERTIFIED LAND CORNER RESTORATION AND ESTABLISHMENT







BEING THE CORNERS FOR THE E 1/2 OF THE NE 1/4,
THE E 1/2 AND SW 1/4 OF THE SE 1/4,
THE SE 1/4 OF SW 1/4 AND CORNERS OF THE PERIMETER OF SECTION

SECTION 34 TOWNSHIP 40 NORTH, RANGE 13 EAST.

COUNTY OF FOREST, STATE OF WISCONSIN.



LEGEND

-  2 1/2 INCH DIAMETER GALVANIZED IRON PIPE MONUMENT WITH BRASS CAP.
-  1 INCH DIAMETER ALUMINUM PIPE MONUMENT 36 INCHES LONG WITH AN ALUMINUM CAP.
-  1 INCH DIAMETER ALUMINUM PIPE MONUMENT 60 INCHES LONG WITH AN ALUMINUM CAP.
-  2 1/2 INCH DIAMETER ALUMINUM PIPE MONUMENT 36 INCHES LONG WITH AN ALUMINUM CAP.
-  2 1/2 INCH DIAMETER ALUMINUM PIPE MONUMENT 60 INCHES LONG WITH AN ALUMINUM CAP.
-  BOUNDARY LINE MARKED TO FOREST SERVICE STANDARD

Stock No. 26273

T40N R13E - SECTION 34

Page 2 of 5

SURVEY NOTES

This survey was made by the U.S. Department of Agriculture, Forest Service for the purpose of recovering, restoring, establishing, marking, and perpetuating the corners and boundary line of U.S. Government land on the perimeter and within Section 34, Township 40 North, Range 13 East, Fourth Principal Meridian, Forest County, State of Wisconsin as shown on the plat map herewith.

The Original Government Sub-division of this township was done in 1865 by William E. Daugherty.

The U.S. Government land within Section 34 was acquired in 1935 and 1941.

The bearings between corner positions are referenced to the East line of Section 25 as previously surveyed. No curvature corrections have been applied to the bearings in Section 34. The accuracy of this survey exceeds the State of Wisconsin requirement for closure of 1 part in 3000. Corners recovered or established by this survey are marked as described in the map legend. Each monumented corner is referenced to blazed, scribed, painted and tagged bearing trees. Tie bearings to the bearing trees are magnetic and are not corrected for declination.

The field notes and a copy of the plat of survey are on file in the Forest Service Supervisor's Office at Rhinelander, Wisconsin and the District Ranger's Office at Eagle River, Wisconsin.

CORNERS RECOVERED AND RESTORED1. Northeast Section Corner

Corner position restored from acceptance of a wood post with scribing visible. The post was set from a 1940 survey and has been accepted as the best remaining evidence of the corner position.

Corner References:

| | | | |
|-----------------|----|-----------|------------|
| Black Spruce | 5" | N 69° E | 12.56 feet |
| Black Spruce | 4" | S 6° W | 42.03 feet |
| Black Spruce | 5" | S 86° W | 47.02 feet |
| Black Spruce | 3" | N 50° W | 27.30 feet |
| Steel Sign Post | | Southwest | 0.75 feet |

2. East Quarter Corner

Corner position restored at midpoint and on line between the Southwest and Northwest section corners.

Corner References:

| | | | |
|-----------------|----|-----------|------------|
| Cedar | 9" | S 14° E | 33.87 feet |
| Cedar | 9" | S 54° W | 18.36 feet |
| Steel Sign Post | | Southeast | 0.75 feet |

3. Southeast Section Corner

Corner position restored from a Dependent resurvey in 1978 by Gary L. Kratz and Michael J. Avery from acceptance of a 2 1/2" diameter iron pipe which is locally accepted as the corner position.

1978 Corner References Recovered:

| | | | |
|-----------------|-----|---------|------------|
| Basswood | 14" | N 81° E | 18.80 feet |
| Basswood | 13" | S 25° E | 23.72 feet |
| Basswood | 13" | S 45° W | 48.85 feet |
| Sugar Maple | 12" | N 71° W | 42.81 feet |
| Steel sign post | | S 26° W | 1.00 feet |



Stock No. 26273

T40N R13E - SECTION 34

Page 3 of 5

4. South Quarter Corner

Corner position restored in 1990 by Gary L. Pisoni, RLS under contract with the U.S. Forest Service. Corner documentation is recorded on a U.S. Public Land Survey Monument Record filed in the Forest County Registrar of Deeds Office.

1990 Corner References Recovered:

| | | | |
|-----------------|-----|---------|------------|
| Spruce | 16" | N 84° E | 21.96 feet |
| Ash | 4" | S 58° E | 19.50 feet |
| Spruce | 9" | West | 21.93 feet |
| Steel sign post | | N 32° E | 1.20 feet |

5. Southwest Section Corner

Corner position restored in 1978 by Jean F. Resvick, RLS, U.S.F.S. Corner documentation is recorded on a Certified Land Corner Restoration Certificate filed in the Forest County Registrar of Deeds Office as Document No. 113312.

1978 Corner References Recovered:

| | | | |
|-----------------|-----|-----------|------------|
| Cedar | 7" | N 47° E | 6.63 feet |
| Cedar | 7" | S 58° E | 19.50 feet |
| Cedar | 12" | S 52° W | 13.64 feet |
| Cedar | 7" | N 61° W | 17.70 feet |
| Steel sign post | | Northwest | 0.50 feet |

6. West Quarter Corner

Corner position restored at midpoint and on line between the Northwest and Southwest section corners.

Corner References:

| | | | |
|-----------------|----|---------|------------|
| White Birch | 9" | S 28° W | 24.38 feet |
| White Birch | 8" | N 10° W | 20.83 feet |
| Steel Sign Post | | West | 0.50 feet |

7. Northwest Section Corner

Corner position recovered and restored in 1977 by Jean Resvick, RLS with the U.S. Forest Service. Corner documentation is recorded on a Certified Land Corner Restoration Certificate filed in the Forest County Registrar of Deeds Office as Document No. 113314.

1977 Corner References Recovered:

| | | | |
|-----------------|-----|-----------|------------|
| Cedar | 11" | N 72° E | 34.67 feet |
| Cedar | 15" | S 16° E | 20.51 feet |
| Cedar | 13" | S 89° W | 33.70 feet |
| Steel Sign Post | | Southwest | 0.50 feet |

8. North Quarter Corner

Corner position restored at midpoint and on line between the Northwest and Northeast section corners.

Corner References:

| | | | |
|-----------------|-----|-----------|------------|
| Maple | 10" | N 42° E | 14.60 feet |
| Maple | 15" | N 60° W | 14.21 feet |
| Steel sign post | | Northwest | 0.50 feet |

Stock No. 26273

T40N R13E - SECTION 34

Page 4 of 5

CORNERS ESTABLISHED1. East Sixteenth Corner Between Sections 27 and 34

Corner position established at midpoint and on line between the Northeast section corner and the North quarter corner of section 34.

Corner References:

| | | | |
|-----------------|----|---------|------------|
| Tamarack | 7" | N 75° E | 20.79 feet |
| Tamarack | 6" | N 22° W | 19.78 feet |
| Steel sign post | | | |

2. Southwest Sixteenth Corner

Corner position established at the intersection of the straight lines between opposing sixteenth corner positions on the perimeter of the Southwest quarter of section 25.

Corner References:

| | | | |
|-----------------|----|-----------|------------|
| Maple | 6" | N 26° E | 12.47 feet |
| Maple | 5" | S 56° E | 17.79 feet |
| Steel sign Post | | Northeast | 1.75 feet |

2. Center West Sixteenth Corner

Corner position established at midpoint and on line between the center quarter corner and the East quarter corner.

Corner References:

| | | | |
|-----------------|----|-----------|------------|
| Maple | 6" | N 40° E | 12.93 feet |
| Maple | 7" | S 65° E | 23.15 feet |
| Steel sign post | | Northwest | 0.50 feet |

3. Southwest Sixteenth Corner

Corner position established at the intersection of straight lines between opposing sixteenth corners on the perimeter of the Southwest quarter.

Corner References:

| | | | |
|-----------------|----|-----------|------------|
| Maple | 5" | N 27° E | 22.45 feet |
| Maple | 8" | S 87° W | 13.50 feet |
| Steel sign post | | Northwest | 0.25 feet |

4. Center South Sixteenth Corner

Corner position established at midpoint and on line between the center quarter corner and the South quarter corner.

Corner References:

| | | | |
|-----------------|-----|-----------|------------|
| Maple | 10" | N 50° E | 3.22 feet |
| Maple | 7" | S 42° E | 14.82 feet |
| Steel sign post | | Northeast | 0.75 feet |

5. Southeast Sixteenth Corner

Corner position established at the intersection of straight lines between opposing sixteenth corners on the perimeter of the Southeast quarter.

Corner References:

| | | | |
|-----------------|----|-----------|------------|
| Aspen | 5" | S 82° E | 12.82 feet |
| Aspen | 3" | S 38° W | 19.31 feet |
| Steel sign post | | Southeast | 1.00 feet |

6. West Sixteenth Corner Between Section 34, T40N R13E and Section 3, T39N R13E

Corner position established at midpoint and on line between the South quarter corner and the Southwest section corner by Gary L. Pisoni, RLS under contract with the U.S.F.S. in 1990..

1990 Corner References:

| | | | |
|-----------------|----|---------|------------|
| Sugar Maple | 7" | N 72° E | 39.90 feet |
| Sugar Maple | 8" | N 10° W | 32.57 feet |
| Steel sign post | | S 20° W | 0.71 feet |

