

Stock No. 26273

FOREST CO SURVEYOR  
 FILE # 401326-19920928  
 DATE \_\_\_\_\_ BY \_\_\_\_\_

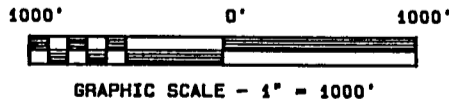
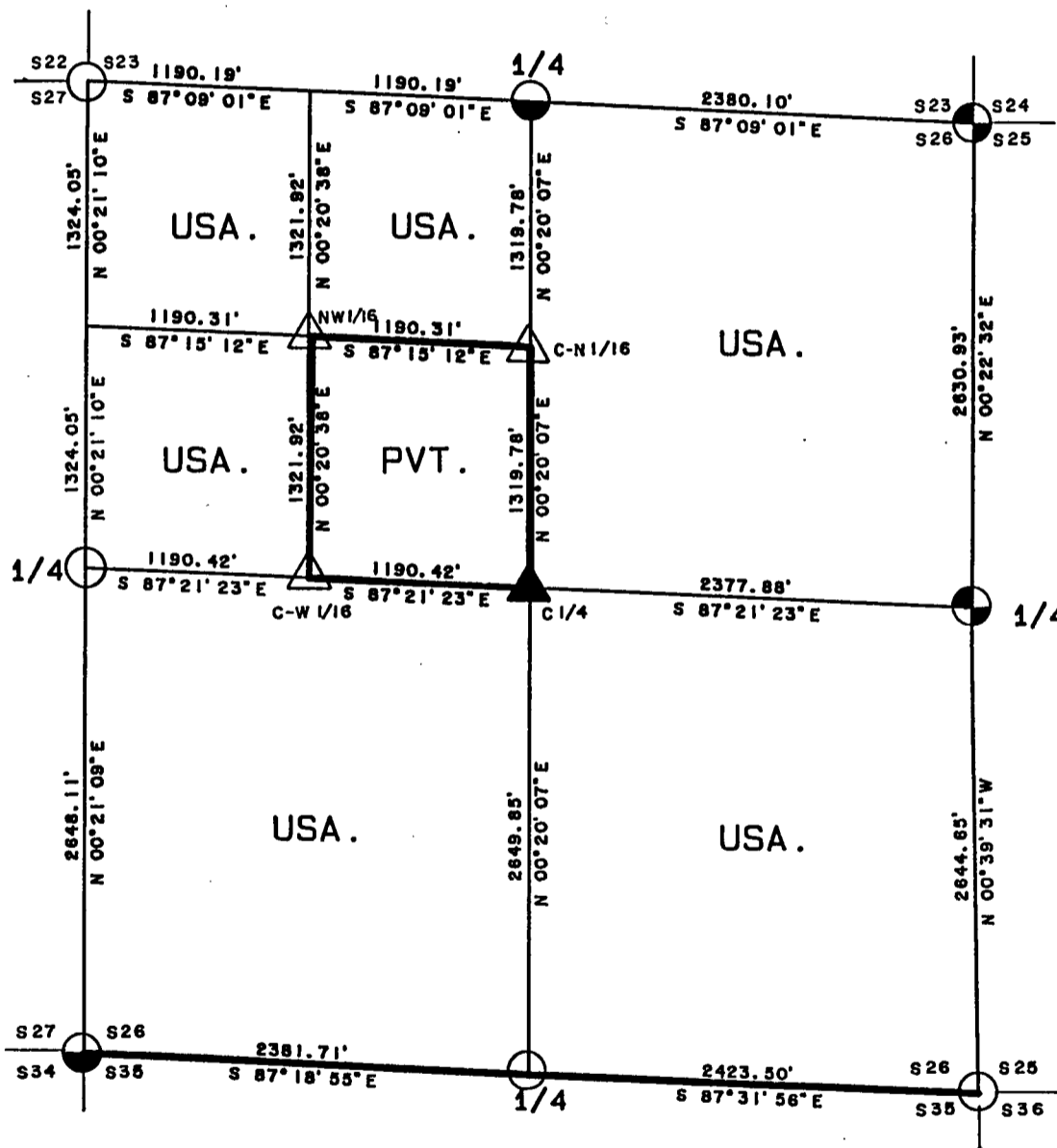
PLAT OF SURVEY FOR CERTIFIED LAND CORNER Page 1 of 4

RESTORATION AND ESTABLISHMENT







BEING THE CORNERS FOR THE SE 1/4 OF THE NW 1/4  
 AND THE CORNERS ON THE PERIMETER OF THE SECTION.

SECTION 26, TOWNSHIP 40 NORTH, RANGE 13 EAST.

COUNTY OF FOREST, STATE OF WISCONSIN.



LEGEND

-  RAIL ROAD SPIKE IN ROAD SURFACE REFERENCED BY AN ALUMINUM PIPE MONUMENT.
-  1 INCH DIAMETER ALUMINUM PIPE MONUMENT 36 INCHES LONG WITH AN ALUMINUM CAP.
-  1 INCH DIAMETER ALUMINUM PIPE MONUMENT 60 INCHES LONG WITH AN ALUMINUM CAP.
-  2 1/2 INCH DIAMETER ALUMINUM PIPE MONUMENT 36 INCHES LONG WITH AN ALUMINUM CAP.
-  2 1/2 INCH DIAMETER ALUMINUM PIPE MONUMENT 60 INCHES LONG WITH AN ALUMINUM CAP.
-  BOUNDARY LINE MARKED TO FOREST SERVICE STANDARD

Stock No. 26273

T40N R13E - SECTION 26

Page 2 of 4

SURVEY NOTES

This survey was made by the U.S. Department of Agriculture, Forest Service for the purpose of recovering, restoring, establishing, marking, and perpetuating the corners and boundary line of U.S. Government land on the perimeter and within Section 26, Township 40 North, Range 13 East, Fourth Principal Meridian, Forest County, State of Wisconsin as shown on the plat map herewith.

The Original Government Sub-division of this township was done in 1865 by William E. Daugherty.

The U.S. Government land within Section 26 was acquired in 1934, 1935, 1938 and 1939.

The bearings between corner positions are referenced to the East line of Section 25 as previously surveyed. No curvature corrections have been applied to the bearings in Section 26. The accuracy of this survey exceeds the State of Wisconsin requirement for closure of 1 part in 3000. Corners recovered or established by this survey are marked as described in the map legend. Each monumented corner is referenced to blazed, scribed, painted and tagged bearing trees. Tie bearings to the bearing trees are magnetic and are not corrected for declination.

The field notes and a copy of the plat of survey are on file in the Forest Service Supervisor's Office at Rhinelander, Wisconsin and the District Ranger's Office at Eagle River, Wisconsin.

CORNERS RECOVERED AND RESTORED1. Northeast Section Corner

Corner position restored in the center of Highway 55 and proportionate distances from a 1940 survey. This position is also in harmony with the description for the parcel in the NW 1/4 of the SW 1/4 of section 24.

## Corner References:

Maple	6"	N 42° E	61.65 feet
Spruce	9"	S 52° W	59.18 feet
Spruce	11"	N 56° W	61.77 feet
No available bearing tree in the Southeast quadrant.			
Reference Corner		West	33.00 feet
Steel Sign Post		West	33.50 feet

2. East Quarter Corner

Corner position restored in the center of Highway 55 at the intersection of the center lines of Highway 55 and an old road that runs East. This information is documented on Forest Service Form 874 dated 1934 and a survey of section 26 dated 1940. This position is accepted as the best available evidence of the corner position.

## Corner References:

Spruce	17"	N 41° E	71.77 feet
W. Pine	17"	S 66° E	78.41 feet
Reference Corner		West	33.00 feet
Steel sign post		West	33.50 feet

3. Southeast Section Corner

Corner position restored from acceptance of an old cedar fence corner with a Forest Service location tag nailed to the post. This position agrees with local usage and the improvements near this corner..

## Corner References:

Spruce	12"	N 65° E	25.82 feet
Aspen	6"	S 72° E	19.98 feet
Aspen	9"	N 4° W	12.40 feet
No available bearing tree in the Southwest quadrant.			
Local corner 2" diam. Iron Pipe		S 89° 51' E	160.95 feet
Steel sign post		Northeast	1.00 feet

Stock No. 26273

T40N R13E - SECTION 26

Page 3 of 4

4. South Quarter Corner

Corner position restored from acceptance of a 1 1/4 inch diameter iron pipe which replaced a squared wood post with scribing faintly visible from a 1940 survey and has been accepted as the best remaining evidence of the corner position.

## Corner References:

Northeast corner of a cabin		S 10° W	68.18 feet
Maple	8"	N 42° W	26.77 feet
Steel sign post		North	0.50 feet

5. Southwest Section Corner

Corner position restored from acceptance of a wood post with scribing visible. The post was set from a 1940 survey and has been accepted as the best remaining evidence of the corner position.

## Corner References:

Black Spruce	5"	N 69° E	12.56 feet
Black Spruce	4"	S 6° W	42.03 feet
Black Spruce	5"	S 86° W	47.02 feet
Black Spruce	3"	N 50° W	27.30 feet
Steel sign post		Southwest	0.75 feet

6. West Quarter Corner

Corner position restored at midpoint and on line between the Southwest and Northwest section corners.

## Corner References:

Cedar	8"	N 41° E	18.25 feet
Cedar	11"	S 16° E	22.75 feet
Steel Sign Post		West	0.50 feet

7. Northwest Section Corner

Corner position restored from acceptance of a wood post. The wood post was set from a 1940 survey and has been accepted as the best remaining evidence of the corner position.

## Corner References:

Maple	6"	N 22° E	24.58 feet
Maple	7"	S 70° E	17.96 feet
Maple	5"	S 46° W	20.06 feet
Maple	4"	N 74° W	19.78 feet
Steel Sign Post		Southeast	1.00 feet

8. North Quarter Corner

Corner position restored at midpoint and on line between the Northwest and Northeast section corners.

## Corner References:

Smallest of three large boulders		S 30° E	44.00 feet
North bank of river		South	30.00 feet
West bank of river		East	22.00 feet
Steel sign post		Northwest along side monument	

CORNERS ESTABLISHED1. Northwest Sixteenth Corner

Corner position established at the intersection of the straight lines between opposing sixteenth corner positions on the perimeter of the Northwest Quarter of Section 26.

## Corner References:

Aspen	7"	N 69° E	34.60 feet
No other bearing trees available			
Steel sign Post		Northwest	0.50 feet

Stock No. 26273

T40N R13E - SECTION 26

Page 4 of 4

2. Center North Sixteenth Corner

Corner position established at midpoint and on line between the Center quarter corner and the North quarter corner.

## Corner References:

Balsam	9"	N 30° E	8.84 feet
Balsam	6"	S 80° E	17.10 feet
Steel sign Post		East	0.75 feet

3. Center West Sixteenth Corner

Corner position established at midpoint and on line between the West quarter corner and the Center quarter corner of Section 26.

## Corner References:

Maple	6"	N 48° E	8.67 feet
Balsam	4"	S 40° E	9.70 feet
Steel sign post		Southwest	0.50 feet

4. Center Quarter Corner

Corner position established at the intersection of straight lines between opposing quarter corners on the perimeter of the section.

## Corner References:

There are no available bearing trees.			
Steel sign post		Southeast	0.50 feet

SURVEYOR'S AFFIDAVIT

State of Wisconsin)  
 )ss  
 County of Forest )

I, William B. Cochrane, Land Surveyor, U.S.D.A. Forest Service and a Registered Land Surveyor in the State of Wisconsin, hereby certify that I have surveyed and sub-divided Section 26, Township 40 North Range 13 East, Fourth Principal Meridian, Forest County, State of Wisconsin.

The plat map and survey notes herewith are a correct representation of the land surveyed and sub-divided. I have surveyed and sub-divided said section in accordance with the rules for the Survey of Public Lands and the Statutes of the State of Wisconsin.

*William B. Cochrane*  
 Land Surveyor, U.S.D.A. Forest Service  
 R.L.S. State of Wisconsin  
 Certificate S-1107

Date of Survey: 1991



Survey requested by: *Carrie Dorn* 9/28/92  
 District Ranger Date

