

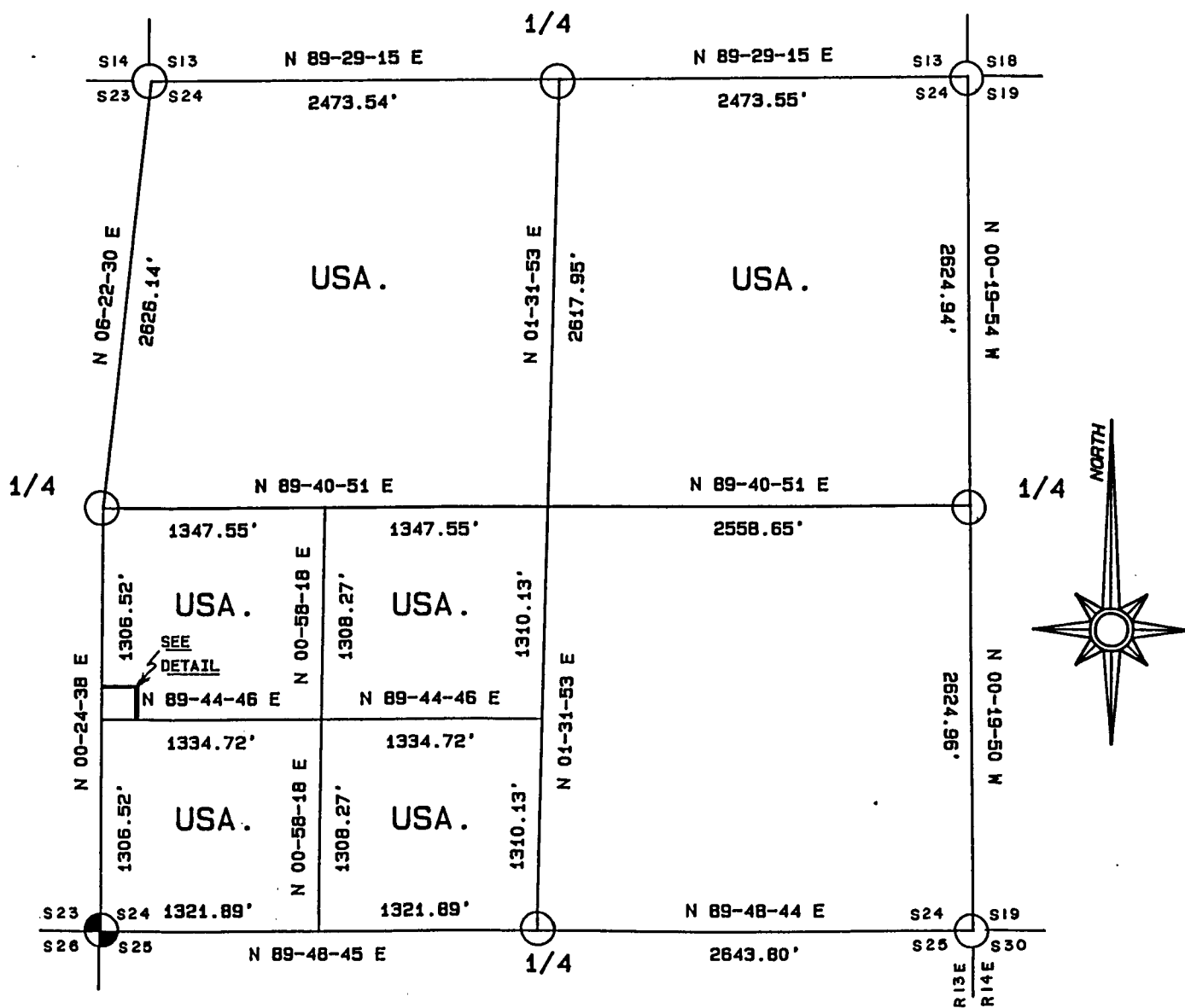
PLAT OF SURVEY FOR CERTIFIED LAND CORNER

RESTORATION AND ESTABLISHMENT

BEING THE CORNERS FOR THE EXCEPTION IN THE  
SW CORNER OF THE NW 1/4 OF THE SW 1/4  
AND THE CORNERS ON THE PERIMETER OF THE SECTION.

SECTION 24, TOWNSHIP 40 NORTH, RANGE 13 EAST.

COUNTY OF FOREST, STATE OF WISCONSIN.



1000' 0' 1000'



GRAPHIC SCALE - 1" = 1000'

LEGEND



2 1/2 INCH DIAMETER ALUMINUM PIPE MONUMENT 36 INCHES LONG WITH AN ALUMINUM CAP.

RAIL ROAD SPIKE IN ROAD SURFACE REFERENCED BY AN ALUMINUM PIPE MONUMENT.

BOUNDARY LINE MARKED TO FOREST SERVICE STANDARD

FOREST CO SURVEYOR

FILE # 401324-19920928

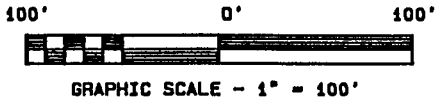
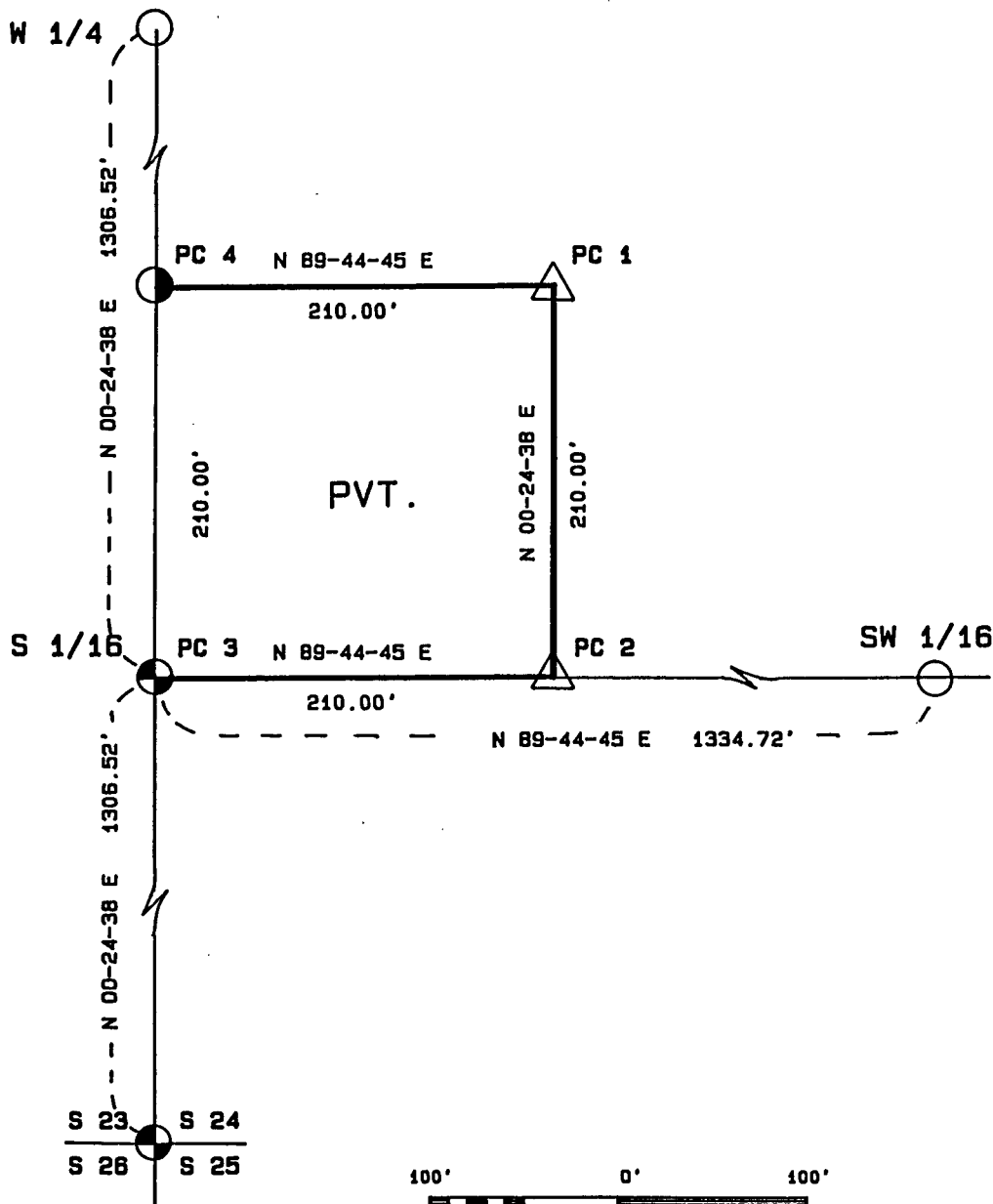
DATE \_\_\_\_\_ BY \_\_\_\_\_

### DETAIL DRAWING






BEING A PARCEL IN THE SW CORNER OF THE  
NW 1/4 OF THE SW 1/4.

SECTION 24, TOWNSHIP 40 NORTH, RANGE 13 EAST.

COUNTY OF FOREST, STATE OF WISCONSIN.



#### LEGEND

-  RAIL ROAD SPIKE IN ROAD SURFACE.
-  1 INCH DIAMETER ALUMINUM PIPE MONUMENT 36 INCHES LONG WITH AN ALUMINUM CAP.
-  2 1/2 INCH DIAMETER ALUMINUM PIPE MONUMENT 36 INCHES LONG WITH AN ALUMINUM CAP.
-  RAIL ROAD SPIKE IN ROAD SURFACE REFERENCED BY AN ALUMINUM PIPE MONUMENT.
-  BOUNDARY LINE MARKED TO FOREST SERVICE STANDARD

Stock No. 26273

T40N R13E - SECTION 24

Page 3 of 6

SURVEY NOTES

This survey was made by the U.S. Department of Agriculture, Forest Service for the purpose of recovering, restoring, establishing, marking, and perpetuating the corners and boundary line of U.S. Government land on the perimeter and within Section 24, Township 40 North, Range 13 East, Fourth Principal Meridian, Forest County, State of Wisconsin as shown on the plat map herewith.

The Original Government Sub-division of this township was done in 1865 by William E. Daugherty.

The U.S. Government land within Section 24 was acquired in 1935 and 1938.

The bearings between corner positions are referenced to the East line of Section 25 as previously surveyed. No curvature corrections have been applied to the bearings in Section 24. The accuracy of this survey exceeds the State of Wisconsin requirement for closure of 1 part in 3000. Corners recovered or established by this survey are marked as described in the map legend. Each monumented corner is referenced to blazed, scribed, painted and tagged bearing trees. Tie bearings to the bearing trees are magnetic and are not corrected for declination.

The field notes and a copy of the plat of survey are on file in the Forest Service Supervisor's Office at Rhinelander, Wisconsin and the District Ranger's Office at Florence, Wisconsin.

CORNERS RECOVERED AND RESTORED1. Northeast Section Corner

Corner position restored by proportionate measurement between the East Quarter Corner of Section 12 and the Southeast Section Corner of Section 24 in 1989 by Gary Pisoni, RLS under contract with the U.S. Forest Service. Corner documentation is recorded on a U.S. Public Land Survey Monument Record filed in the Forest County Registrar of Deeds Office as Document No. 140473.

1989 Corner References Recovered:

Sugar Maple	7"	S 15° E	46.83 feet
Sugar Maple	9"	S 84° W	23.41 feet
Sugar Maple	6"	N 55° W	17.69 feet
Steel Sign Post		North	0.83 feet

2. East Quarter Corner

Corner position restored by proportionate measurement between the Southeast and Northeast Section Corners of Section 24 by Gary Pisoni, RLS under contract with the U.S. Forest Service. Corner documentation is recorded on a U.S. Public Land Survey Monument Record filed in the Forest County Registrar of Deeds Office as Document No. 140481.

1989 Corner References Recovered:

Balsam	6"	N 46° E	36.16 feet
White Birch	7"	N 55° W	22.60 feet
Balsam	8"	N 20° W	28.49 feet
Steel Sign Post		S 32° W	1.52 feet

3. Southeast Section Corner

Corner position recovered and restored in 1989 by Gary Pisoni, RLS under contract with the U.S. Forest Service. Corner documentation is recorded on a U.S. Public Land Survey Monument Record filed in the Forest County Registrar of Deeds Office as Document No. 140485.

1989 Corner References Recovered:

Ash	5"	N 19° E	15.58 feet
Ash	5"	S 88° E	10.48 feet
Ash	8"	S 35° E	16.18 feet
Steel sign post		S 65° W	0.72 feet

Stock No. 26273

T40N R13E - SECTION 24

Page 4 of 6

4. South Quarter Corner

Corner position restored at midpoint and on line between the Southwest section corner and the Southeast section corner.

## Corner References:

Aspen	3"	N 62° E	7.84 feet
Aspen	7"	N 2° W	10.31 feet
Steel sign post		Southwest	0.75 feet

5. Southwest Section Corner

Corner position restored in the center of Highway 55 and proportionate distances from the 1940 survey. This position is also in harmony with the description for the parcel in the NW 1/4 of the SW 1/4 of section 24.

## Corner References:

Maple	6"	N 42° E	61.65 feet
Spruce	9"	S 52° W	59.18 feet
Spruce	11"	N 56° W	61.77 feet
No available bearing tree in the Southeast Quadrant.			
Reference Corner		West	33.00 feet
Steel Sign Post		West	33.50 feet

6. West Quarter Corner

Corner position restored at a point by projecting the bearing of the center line of Highway 55 from the South and at proportionate distance between the Northwest section corner of section 13 and the Southwest section corner of section 24.

## Corner References:

Aspen	8"	N 23° E	57.22 feet
Balsam	6"	S 59° E	41.25 feet
Center Line of Highway 55		West	16.00 feet
Steel Sign Post		East	33.00 feet

7. Northwest Section Corner

Corner restored at double proportionate measurement between the Southwest section corner of section 14, the Northwest section corner of section 13, the Southeast section corner of section 13 and the West quarter corner of section 24.

## Corner References:

Maple	5"	N 67° E	18.68 feet
Maple	4"	S 78° E	36.40 feet
Maple	7"	S 9° W	13.05 feet
Maple	12"	N 61° W	25.56 feet
Steel sign post		Southeast	0.75 feet

8. North Quarter Corner

Corner position restored at midpoint and on line between the Northwest section corner and the Northeast section corner.

## Corner References:

Black Ash	7"	S 52° E	8.97 feet
Spruce	9"	S 26° W	9.12 feet
Steel sign post		Southeast	0.50 feet

Stock No. 26273

T40N R13E - SECTION 24

Page 5 of 6

CORNERS ESTABLISHED1. South Sixteenth Corner Between Sections 23 and 24. This corner is also Property Corner No. 3 and the Point of Beginning for the one acre exception in the Northwest 1/4 of the Southwest 1/4).

Corner position established at midpoint and on line between the Southwest section corner and the West quarter corner of Section 24. Corner position is in the center line of Highway 55.

## Corner References:

Maple	9"	N 77° E	42.78 feet
Maple	8"	S 62° E	48.45 feet
Property Corner No. 2		N 89°44'45"E	210.00 feet
Property Corner No. 4		N 0°24'38"E	210.00 feet
Reference Monument		N 89°44'45"E	33.00 feet
Steel sign post		East	30.00 feet

2. Property Corner No. 1

Corner position established for the Northeast corner of the one acre exception in the Northwest 1/4 of the Southwest 1/4 as described on Warranty Deed Document No.54455 filed in Volume 56, Page 520 at the Forest County Registrar of Deeds Office.

## Corner References:

Maple	4"	S 63° W	16.85 feet
Maple	5"	N 32° W	17.35 feet
Property Corner No. 4		S 89°44'45"W	210.00 feet
Property Corner No. 2		S 0°24'38"W	210.00 feet
Steel sign Post		East	0.50 feet

3. Property Corner No. 2

Corner position established for the Southeast corner of the one acre exception in the Northwest 1/4 of the Southwest 1/4 as described on Warranty Deed Document No.54455 filed in Volume 56, Page 520 at the Forest County Registrar of Deeds Office.

## Corner References:

Basswood	18"	N 48° E	15.24 feet
Basswood	14"	N 51° W	20.18 feet
Property Corner No. 1		N 0°24'38"E	210.00 feet
Property Corner No. 3		S 89°44'45"W	210.00 feet
Steel sign post		East	0.50 feet

4. Property Corner No. 4

Corner position established for the Northwest corner of the one acre exception in the Northwest 1/4 of the Southwest 1/4 as described on Warranty Deed Document No. 54455 filed in Volume 56, Page 520 at the Forest County Registrar of Deeds Office. Corner position is in the center line of Highway 55.

## Corner References:

Maple	9"	N 77° E	42.78 feet
Maple	8"	S 62° E	48.45 feet
Property Corner No. 1		N 89°44'45"E	210.00 feet
Property Corner No. 3		S 0°24'38"W	210.00 feet
Steel sign post		East	30.00 feet

Stock No. 26273

T40N R13E - SECTION 24

SURVEYOR'S AFFIDAVIT

State of Wisconsin)  
  )ss  
County of Forest    )

I, William B. Cochrane, Land Surveyor, U.S.D.A. Forest Service and a Registered Land Surveyor in the State of Wisconsin, hereby certify that I have surveyed and sub-divided Section 24, Township 40 North Range 13 East, Fourth Principal Meridian, Forest County, State of Wisconsin.

The plat map and survey notes herewith are a correct representation of the land surveyed and sub-divided. I have surveyed and sub-divided said section in accordance with the rules for the Survey of Public Lands and the Statutes of the State of Wisconsin.

*William B. Cochrane*

Land Surveyor, U.S.D.A. Forest Service  
R.L.S. State of Wisconsin  
Certificate S-1107



Date of Survey: 1991

Survey requested by: *Jan A...*  
District Ranger

9/28/92  
Date

