

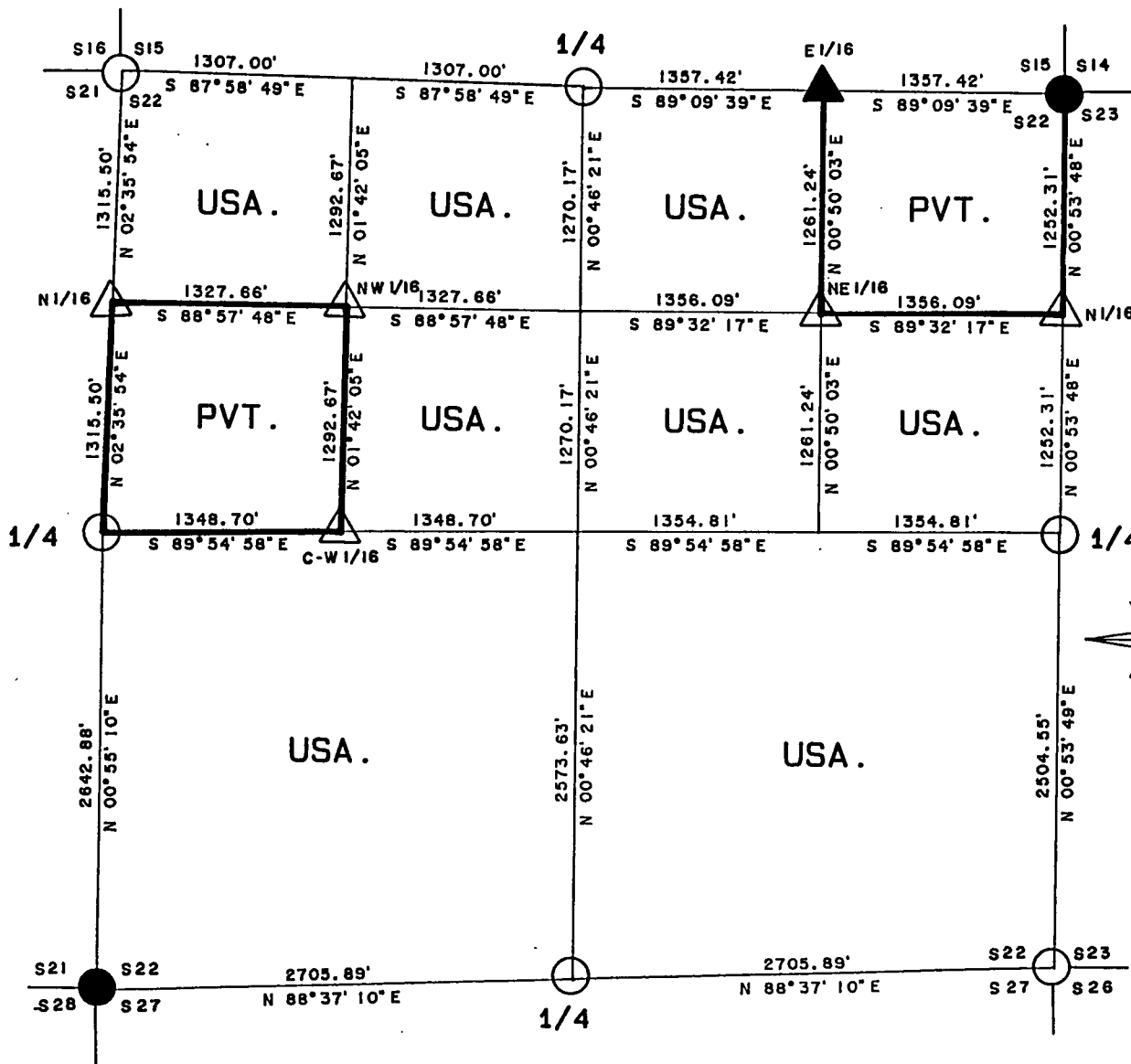
PLAT OF SURVEY FOR CERTIFIED LAND CORNER

RESTORATION AND ESTABLISHMENT

BEING THE CORNERS FOR THE NE 1/4 OF THE NE 1/4,
THE SW 1/4 OF THE NW 1/4,
AND THE CORNERS ON THE PERIMETER OF THE SECTION.

SECTION 22, TOWNSHIP 40 NORTH, RANGE 13 EAST.

COUNTY OF FOREST, STATE OF WISCONSIN.



1000' 0' 1000'



GRAPHIC SCALE - 1" = 1000'

LEGEND



2 1/2 INCH DIAMETER GALVANIZED IRON PIPE MONUMENT WITH BRASS CAP.



1 INCH DIAMETER ALUMINUM PIPE MONUMENT 36 INCHES LONG WITH AN ALUMINUM CAP.



1 INCH DIAMETER ALUMINUM PIPE MONUMENT 60 INCHES LONG WITH AN ALUMINUM CAP.



2 1/2 INCH DIAMETER ALUMINUM PIPE MONUMENT 36 INCHES LONG WITH AN ALUMINUM CAP.

BOUNDARY LINE MARKED TO FOREST SERVICE STANDARD

FOREST CO SURVEYOR

FILE # 401322-19920928

DATE _____ BY _____

Stock No. 26273

T40N R13E - SECTION 22

Page 2 of 5

SURVEY NOTES

This survey was made by the U.S. Department of Agriculture, Forest Service for the purpose of recovering, restoring, establishing, marking, and perpetuating the corners and boundary line of U.S. Government land on the perimeter and within Section 22, Township 40 North, Range 13 East, Fourth Principal Meridian, Forest County, State of Wisconsin as shown on the plat map herewith.

The Original Government Sub-division of this township was done in 1865 by William E. Daugherty.

The U.S. Government land within Section 22 was acquired in 1934, 1941 and 1948.

The bearings between corner positions are referenced to the East line of Section 25 as previously surveyed. No curvature corrections have been applied to the bearings in Section 22. The accuracy of this survey exceeds the State of Wisconsin requirement for closure of 1 part in 3000. Corners recovered or established by this survey are marked as described in the map legend. Each monumented corner is referenced to blazed, scribed, painted and tagged bearing trees. Tie bearings to the bearing trees are magnetic and are not corrected for declination.

The field notes and a copy of the plat of survey are on file in the Forest Service Supervisor's Office at Rhinelander, Wisconsin and the District Ranger's Office at Eagle River, Wisconsin.

CORNERS RECOVERED AND RESTORED1. Northeast Section Corner

Corner position recovered and restored in 1975 by Jean Resvick, RLS with the U.S. Forest Service. Corner documentation is recorded on a Certified Land Corner Restoration Certificate filed in the Forest County Registrar of Deeds Office as Document No. 106881.

1975 Corner References:

Maple	10"	N 74° E	12.32 feet
Maple	10"	S 12° E	23.57 feet
Maple	11"	S 72° W	8.63 feet

New Corner References:

Steel Sign Post		Northeast	1.00 feet
-----------------	--	-----------	-----------

2. East Quarter Corner

Corner position restored at midpoint and on line between the Northeast and Southeast section corners.

Corner References:

Maple	9"	North	15.82 feet
Maple	11"	N 41° W	24.93 feet
Steel Sign Post		East	0.25 feet

3. Southeast Section Corner

Corner position restored from acceptance of a wood post. The wood post was set from a 1940 survey and has been accepted as the best remaining evidence of the corner position.

Corner References:

Maple	6"	N 22° E	24.58 feet
Maple	7"	S 70° E	17.96 feet
Maple	5"	S 46° W	20.06 feet
Maple	4"	N 74° W	19.78 feet
Steel sign post		Southeast	1.00 feet

Stock No. 26273

T40N R13E - SECTION 22

Page 3 of 5

4. South Quarter Corner

Corner position was restored at midpoint and on line between the Southwest and Southeast section corners.

Corner References:

Hemlock	15"	S 27° E	39.12 feet
Spruce	8"	S 63° W	26.13 feet
Cedar (4 old blazes)	9"	N 75° W	48.00 feet
Steel sign post		North	0.50 feet

5. Southwest Section Corner

Corner position recovered and restored in 1959 by Robert Bandow, RLS. Corner documentation is recorded on a Certified Land Corner Restoration Certificate filed in the Forest County Registrar of Deeds Office as Document No. 83250.

1959 Corner References Recovered:

Y. Birch	13"	N 70° E	27.20 feet
Hemlock	22"	S 30° E	32.20 feet
Cedar	20"	N 25° W	36.30 feet

New Corner References:

Steel sign post		East	0.75 feet
-----------------	--	------	-----------

6. West Quarter Corner

Corner position restored from acceptance of an old 1 1/4 inch diameter iron pipe and local bearing trees as recovered in 1964 by Jean Resvick, RLS with the U.S. Forest Service. This position is accepted as the best available evidence of the corner.

Corner References:

Maple	6"	S 34° W	18.88 feet
Maple	6"	N 63° W	10.72 feet
Steel Sign Post		Northwest	0.50 feet

7. Northwest Section Corner

Corner position restored from acceptance of an old 4" x 4" scribed wood post as being the best available evidence of the corner.

Corner References:

Spruce	14"	N 18° E	29.66 feet
Spruce	14"	S 67° E	17.10 feet
Balsam	5"	S 6° W	16.48 feet
White Birch	8"	N 14° W	17.95 feet
Steel Sign Post		Northwest	0.50 feet

8. North Quarter Corner

Corner position was restored from acceptance of an iron pipe and the stumps of the Original Survey bearing trees.

Original Corner References Found:

Original Hemlock stump		S 46° E	15.18 feet
Original Hemlock stump		N 37° W	17.82 feet

New Corner References:

Hemlock	12"	South	28.78 feet
Spruce	10"	N 65° W	10.74 feet
Steel sign post		East	0.50 feet

Stock No. 26273

T40N R13E - SECTION 22

Page 4 of 5

CORNERS ESTABLISHED1. East Sixteenth Corner Between Sections 15 and 22

Corner position established at midpoint and on line between the North quarter corner and the Northeast section corner.

Corner References:

Tamarack	15"	N 45° E	20.27 feet
Tamarack	14"	S 36° W	9.97 feet
Steel sign post		West	0.75 feet

2. North Sixteenth Corner Between Sections 21 and 22

Corner position established at midpoint and on line between the West quarter corner and the Northwest section corner.

Corner References:

Hemlock	18"	N 13° E	31.04 feet
Maple	9"	S 52° E	22.62 feet
Steel sign post		Northwest	0.50 feet

3. Northwest Sixteenth Corner

Corner position established at the intersection of the straight lines between opposing sixteenth corner positions on the perimeter of the Northwest quarter of section 22.

Corner References:

Maple	10"	N 50° E	27.60 feet
Balsam	10"	N 55° W	6.02 feet
1 1/4 Inch Iron Pipe		S 82° W	3.45 feet
Steel sign Post		Southeast	0.75 feet

4. Northeast Sixteenth Corner

Corner position established at the intersection of the straight lines between opposing sixteenth corner positions on the perimeter of the Northeast quarter of section 22.

Corner References:

Maple	9"	S 13° E	10.70 feet
Maple	9"	S 42° W	20.74 feet
Steel sign post		Southwest	0.50 feet

5. North Sixteenth Corner Between Sections 22 and 23

Corner position established at midpoint and on line between the East quarter corner and the Northeast section corner.

Corner References:

Maple	6"	N 35° E	6.02 feet
Maple	7"	S 40° E	16.45 feet
Steel sign post		Southeast	0.50 feet

6. Center West Sixteenth Corner

Corner position established at midpoint and on line between the Center quarter corner and the West quarter corner.

Corner References:

Maple	7"	N 14° E	15.75 feet
Maple	6"	N 69° E	14.86 feet
1 1/4 Inch Iron Pipe		S 80° E	15.24 feet
Steel sign post		Northeast	0.50 feet

Stock No. 26273

T40N R13E - SECTION 22

Page 5 of 5

SURVEYOR'S AFFIDAVIT

State of Wisconsin)
)ss
 County of Forest)

I, William B. Cochrane, Land Surveyor, U.S.D.A. Forest Service and a Registered Land Surveyor in the State of Wisconsin, hereby certify that I have surveyed and sub-divided Section 22, Township 40 North Range 13 East, Fourth Principal Meridian, Forest County, State of Wisconsin.

The plat map and survey notes herewith are a correct representation of the land surveyed and sub-divided. I have surveyed and sub-divided said section in accordance with the rules for the Survey of Public Lands and the Statutes of the State of Wisconsin.

William B. Cochrane
 Land Surveyor, U.S.D.A. Forest Service
 R.L.S. State of Wisconsin
 Certificate S-1107



Date of Survey: 1991

Survey requested by:

Pam Gork
 District Ranger

9/28/92

Date

