

FOREST CO SURV. ...
 # 401302-19900105
 DATE _____ BY _____

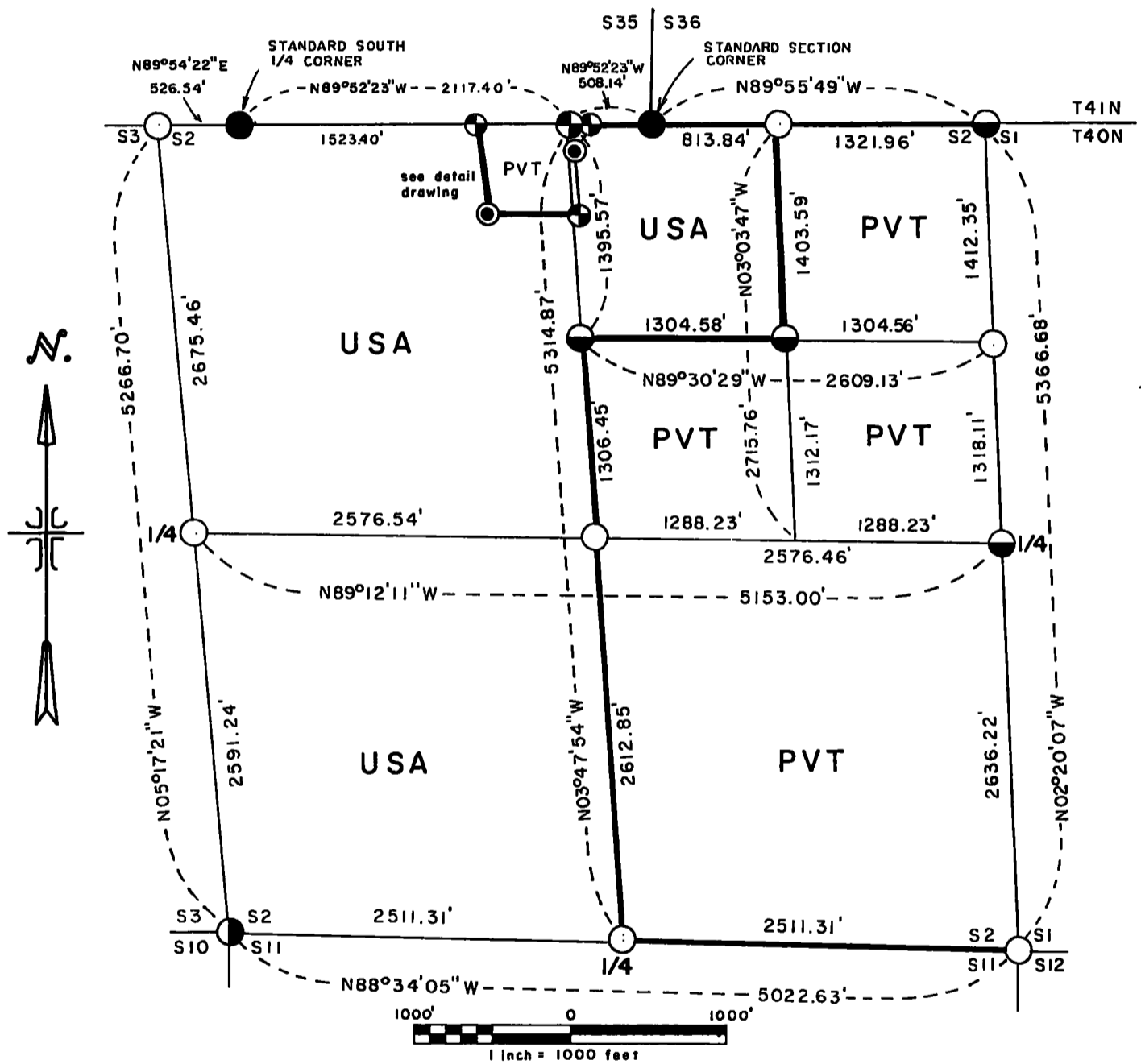
Stock No. 26273

T40N - R13E, SECTION 2

PLAT OF SURVEY FOR CERTIFIED LAND CORNER
 RESTORATION AND ESTABLISHMENT

BEING THE CORNERS FOR THE E $\frac{1}{2}$, THE NW $\frac{1}{4}$ OF THE NE $\frac{1}{4}$, THE CORNERS
 FOR THE 8.53 ACRE EXCEPTION IN THE NE $\frac{1}{4}$ OF THE NW $\frac{1}{4}$
 AND THE CORNERS ON THE PERIMETER OF THE SECTION

SECTION 2 TOWNSHIP 40 NORTH, RANGE 13 EAST
 FOURTH PRINCIPAL MERIDIAN, FOREST COUNTY, STATE OF WISCONSIN



LEGEND

- 2 1/2 inch diameter aluminum pipe monument, 36 inches long with an aluminum cap.
- ◐ 2 1/2 inch diameter aluminum pipe monument, 60 inches long with an aluminum cap.
- ⊕ Railroad spike in blacktop and witnessed by an aluminum pipe monument.
- 2 1/2 inch diameter galvanized pipe monument, set by Genisot and associates.
- ⊙ 1 inch diameter aluminum pipe monument, 36 inches long with an aluminum cap.
- G.L.O. dependent resurvey monument.
- boundary line marked to Forest Service Standards.

Stock No. 26273

page 3 of 6

SURVEY NOTES

This survey was made by the U.S. Department of Agriculture, Forest Service, for the purpose of recovering, restoring, establishing, marking, and perpetuating the corners and boundary lines of U.S. Government land on the perimeter and within Section 2 Township 40 North, Range 13 East, Fourth Principal Meridian, Forest County, State of Wisconsin as shown on the plat map herewith.

The U.S. Government land within Section 2 was acquired in 1934, 1935 and 1938.

The original government subdivision survey of this township was made in 1865.

The field notes of this survey and a copy of the plat of survey are on file in the Forest Service Supervisor's Office at Rhinelander, Wisconsin.

CORNERS RECOVERED AND RESTORED1. Closing Northeast Section Corner.

Corner position is restored at proportionate distance and on line between the Standard Section Corner common to Sections 35 and 36 T41N R13E, and the Standard South Quarter Corner of Section 36 T41N R13E.

Corner references:

Spruce	3"	S53°E	19.63 feet
Tamarack	4"	S59°W	55.83 feet
Spruce	5"	N46°W	38.80 feet
Steel sign post		North	1.00 feet

2. East Quarter Corner.

Corner position restored at midpoint and on line between the Southeast and Closing Northeast Section Corners.

Corner references:

Spruce	7"	S08°E	5.65 feet
Spruce	5"	S86°W	4.36 feet
Steel sign post		Northeast	1.50 feet

3. Southeast Section Corner.

Corner position is restored by double proportionate measurements.

Corner references:

Maple	7"	N41°E	23.20 feet
y. Birch	14"	S27°E	8.90 feet
Maple	7"	S69°W	22.90 feet
Maple	7"	N09°W	9.09 feet
Steel sign post		Northwest	0.75 feet

4. South Quarter Corner.

Corner position is restored at midpoint and on line between the Southeast and Southwest Section Corners.

Corner references:

Maple	9"	S34°W	14.03 feet
Maple	8"	N32°W	22.54 feet
Steel sign post		West	1.00 feet

5. Southwest Section Corner.

Corner position recovered as restored by Robert Bandow in 1959 from recovered original evidence.

Corner references recovered:

Y. Birch	20"	S61°E	14.78 feet
Maple	22"	S39°W	19.62 feet
Maple	20"	N15°W	37.07 feet

New Corner references:

Maple	10"	N37°E	39.43 feet
Steel sign post		Northeast	1.00 feet

Stock No. 26273

page 4 of 6

6. West Quarter Corner.

Corner position restored at midpoint and on line between the Southwest Section Corner and the Closing Northwest Section Corner.

Corner references:

Y. Birch	15"	N45°E	18.43 feet
Maple	20"	N50°W	41.38 feet
Steel sign post		East	0.50 feet

7. Closing Northwest Section Corner.

Corner position restored by proportionate measurements and on line between the Standard South Quarter Corner of Section 35 T41N R13E, and the Standard Section Corner common to Sections 34 and 35 T41N R13E.

Corner references:

Maple	9"	S10°E	50.48 feet
Maple	13"	S23°W	38.69 feet
Steel sign post		North	16.21 feet

8. Closing North Quarter Corner.

Corner position restored by proportionate measurements and on line between the Standard South Quarter Corner of Section 35 T41N R13E and the Standard Section Corner common to Sections 35 and 36 T41N R13E.

Corner references:

Maple	9"	N77°E	81.62 feet
Maple	19"	S57°E	82.19 feet

No steel sign post was placed here.

CORNERS ESTABLISHED1. Closing East Sixteenth Corner between Section 36 T41N R13E and Section 2 T40N R13E.

Corner position is established at midpoint between the Closing North Quarter and the Closing Northeast Section Corner and on line between the Standard Section Corner common to Sections 35 and 36 T41N R13E and the Standard South Quarter Corner of Section 36 T41N R13E.

Corner references;

Maple	7"	S28°E	8.08 feet
Maple	10"	N85°W	37.97 feet
Steel sign post		North	1.50 feet

2. Center-North Sixteenth Corner.

Corner position is established at proportionate distance and on line between the Closing North Quarter and the Center Quarter Corner.

Corner references:

Cedar	10"	S28°E	12.55 feet
Y. Birch	5"	North	2.89 feet
Steel sign post		West	1.00 feet

3. Northeast Sixteenth Corner.

Corner position is established at the intersection of the straight lines between opposing sixteenth Corner positions on the perimeter of the Northeast Quarter of the Section.

Corner references:

Cedar	10"	N01°E	44.37 feet
Cedar	10"	N70°W	32.31 feet
Steel sign post		Southeast	0.50 feet

4. Center-Quarter Corner.

Corner position is established at the intersection of the straight lines between opposing Quarter Corner positions on the perimeter of the Section.

Corner references:

Y. Birch	16"	S65°E	3.80 feet
Maple	8"	S38°W	28.80 feet
Steel sign post		Northwest	0.50 feet

Stock No. 26273

page 5 of 6

5. Property Corner number one.

Corner position is established at the intersection of Center Line of State highway 55 and on line between the Closing North Quarter Corner and the Standard Section Corner common to Sections 35 and 36 T41N R13E.

Corner references:

Maple (north fork)	10"	N88°W	54.32 feet
Power Pole	#N65 1307	S31°E	38.76 feet

6. Property Corner number two.

Corner position is established at recorded distance from the Closing North Quarter Corner and on line between the Closing North Quarter Corner and the Standard South Quarter Corner of Section 35 T41N R13E.

Corner references:

SW Corner of Grave Marker N & E Huff		N36°E	68.75 feet
SE Corner of Grave Marker A & A Sunn		N14°W	59.79 feet
Witness Corner	36"x1"	S07°E	33.27 feet

References for Witness Corner:

Cherry	8"	S62°W	41.16 feet
Spruce	6"	N70°W	26.45 feet

7. Property Corner number Three.

Corner position is established at recorded distance Southernly from property Corner number Two and at recorded distance Westernly from property Corner number Four.

Corner references:

Maple (NW branch)	12"	S41°E	7.05 feet
Aspen	4"	N60°W	18.64 feet
Steel sign post		Southwest	0.75 feet

8. Property Corner number 4.

Corner position is established at the recorded distance Southernly from the Section line to the North and in center line of State Highway 55.

Corner references:

Power Pole	#HOP-9-26	N50°E	31.08 feet
Maple	9"	S76°E	40.98 feet
Witness Corner	36"x1"	N89°W	33.16 feet

Witness Corner references:

Maple	9"	S28°W	15.16 feet
Maple	7"	N38°W	33.64 feet
Steel sign post		South	0.75 feet

9. Point of Curve PI.

Corner position is established at the point of intersection of straight lines on the center line of State Hwy 55 running Northeast and South.

The boundary line of the exception follows the center line of State Hwy 55 around the curve having a tangent of 150' each way from the PI.

Corner references:

Maple	8"	S43°W	28.24 feet
Maple	8"	N84°W	20.16 feet
Steel sign post		West	0.50 feet

Stock No. 26273

T40N R13 SECTION 2

page 6 of 6

SURVEYOR'S AFFIDAVIT

State of Wisconsin)
County of Forest)

I William B. Cochrane, Land Surveyor, U.S. Forest Service, and a registered Land Surveyor in the State of Wisconsin, hereby certify that I have surveyed and subdivided Section 2 Township 40 North, Range 13 East, Fourth Principal Meridian, State of Wisconsin.

The plat map and survey notes herewith are a correct representation of the land surveyed and divided. I have surveyed and subdivided said section in accordance with the rules for the survey of the public lands and with the statutes of the State of Wisconsin.



William B. Cochrane
Land Surveyor, U.S.D.A. Forest Service
R.L.S. State of Wisconsin
Certificate S-1107

Date of Survey: 1986

Survey requested by: Sam Gordon
District Ranger

1/5/90
Date

