

Stock No. 26273

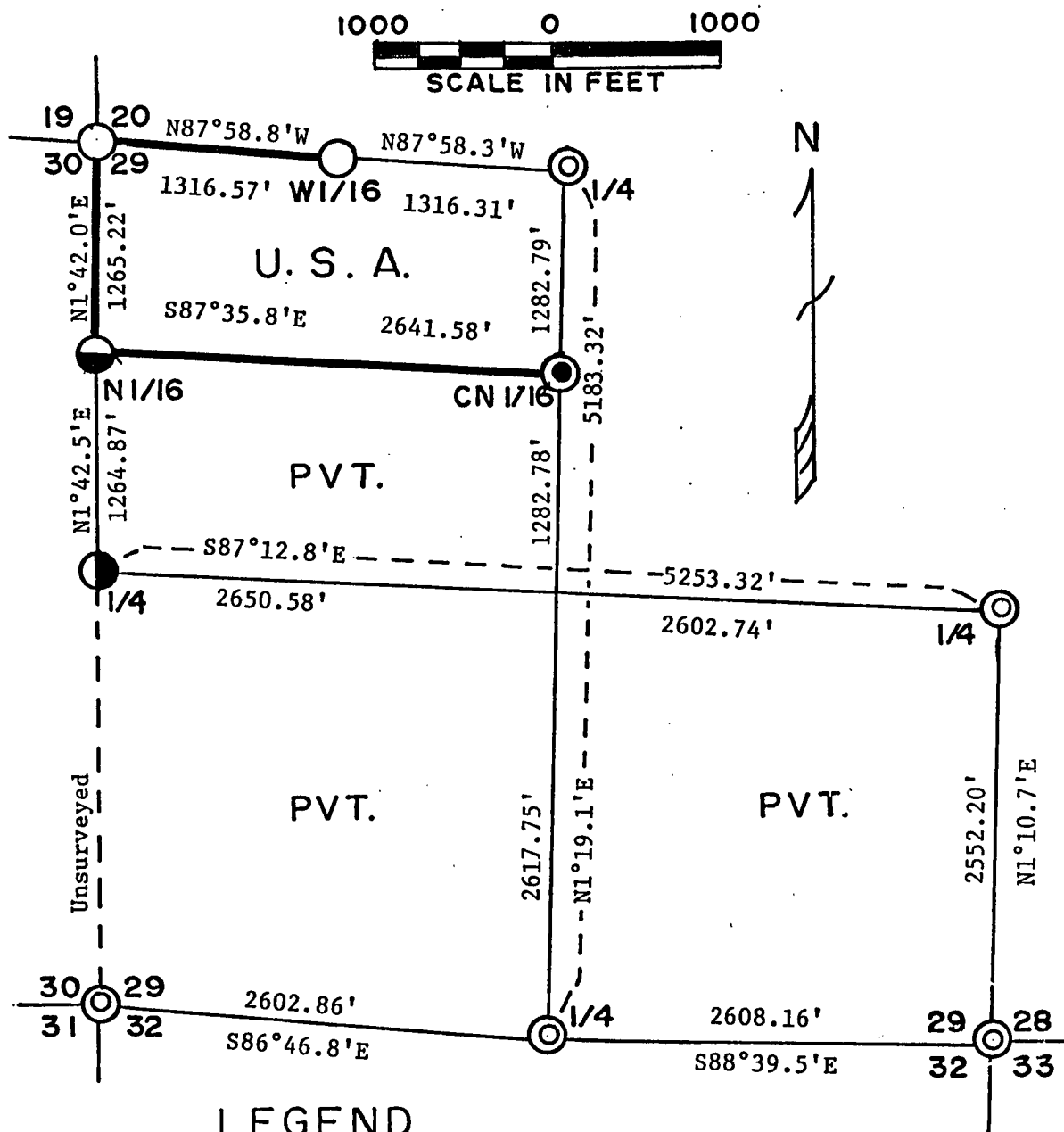
SHEET 1 of 4

PLAT OF SURVEY U. S. GOVERNMENT LAND

Being the N1/2NW1/4 Section 29

Township 37 North, Range 15 East, Fourth Principal Meridian

FOREST COUNTY, WISCONSIN



LEGEND

- ⊙ — Railroad Spike in Surface of Blacktop
- — Forest Service Brass Cap on 2" Iron Pipe
- ◐ — 1 1/2" Aluminum Cap on 1" Iron Pipe
- ◑ — Forest County Aluminum Monument
- — Set Forest Service Monument, 1"x36" Drive Type, Aluminum
- — Boundary U.S. Government Lands

Conversion Factors:
Feet to Meters - 3.280833
Meters to Feet - .304801

Stock No. 26273

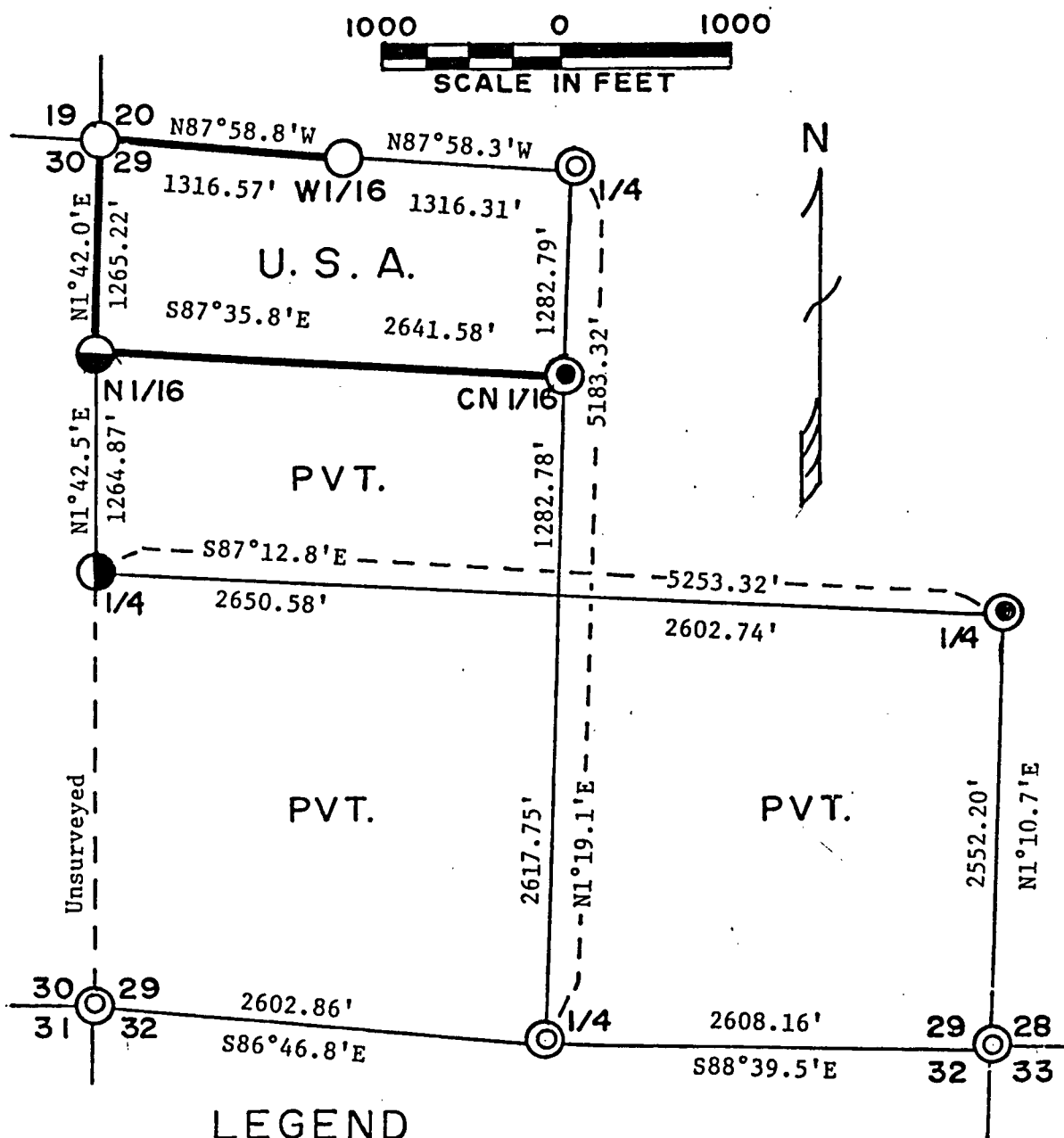
SHEET 1 of 4

PLAT OF SURVEY U. S. GOVERNMENT LAND

Being the N1/2NW1/4 Section 29

Township 37 North, Range 15 East, Fourth Principal Meridian

FOREST COUNTY, WISCONSIN



LEGEND

- ⊙ — Railroad Spike in Surface of Blacktop
- — Forest Service Brass Cap on 2" Iron Pipe
- ◐ — 1 1/2" Aluminum Cap on 1" Iron Pipe
- — Forest County Aluminum Monument
- ⊙ — Set Forest Service Monument, 1"x36" Drive Type, Aluminum
- — Boundary U.S. Government Lands

Conversion Factors:
 Feet to Meters - 3.280833
 Meters to Feet - .304801

SURVEY NOTES

This survey was made at the request of the U. S. Department of Agriculture, Forest Service, under contract #53-56A6-8-00187 dated June 3, 1988 to Milo E. Stefan, a registered land surveyor in the State of Wisconsin. The purpose of the survey was for subdividing, establishment of corners and marking the boundaries of U. S. Government Lands on the perimeter and within Section 29, Township 37 North, Range 15 East, Fourth Principal Meridian, Forest County, Wisconsin, as shown on the plat map herewith.

The original government subdivision survey of this Township was made in 1865 by J. L. Nowlin. All exterior controlling Section Corners and Quarter Corners have been recently restored by the Forest Service or private surveyors. The West Sixteenth to Sections 20 and 29 and North Sixteenth to Sections 29 and 30 have also been established and found to be within acceptable limits for this survey.

The Forest Service, U. S. Department of Agriculture, acquired ownership to these lands in this section in 1950. Bearings for this survey have been verified with a solar observation and conform to the Section 32 survey by the Forest Service in 1985. The field survey notes and a copy of this "Plat of Survey" are on file in the Forest Supervisor's Office at Rhinelander, Wisconsin. A copy of the "Plat of Survey" is on file in the District Ranger's Office in Laona, Wisconsin.

CORNERS RECOVERED AND RESTORED

1. Section Corner to Sections 19, 20, 29 and 30; T37N, R15E.
Position found marked by Forest Service Monument, a brass cap atop a 2" galvanized iron pipe as set by Jean F. Resvick S-802 in 1976, certificate on file, dated 7/2/76, Document #109586.

Corner references:

7"	White Birch	N50°E	29.63 Feet
18"	White Pine (dead)	S40°E	74.48 Feet
17"	White Pine	S19°W	118.91 Feet
11"	White Spruce	N29°W	50.46 Feet
	Steel Sign Post	West	.5 Feet
6" x 6"	Cedar Post	Southeast	2.0 Feet

2. Section Corner to Sections 29, 30, 31 and 32; T37N, R15E.
Position found marked by a railroad spike in surface of County Highway "G", as set by S-1537, certificate filed 9/25/1981 Document #120539.

Corner references:

12"	White Pine	N24°E	44.83 Feet
11"	White Pine	S48°W	98.50 Feet
	Witness Corner	South	40.00 Feet
	(Forest County Aluminum Monument)		
	Power Pole #3715-23WI	S19°W	32.47 Feet
	Steel Sign Post	South	41.00 Feet

3. Section Corner to Sections 28, 29, 32 and 33; T37N, R15E.
Position found marked by a railroad spike and a 1 1/4" iron pipe in center line of County Highway "G" as set by Thomas R. Arnott 6/11/76 and certificate filed 6/12/76, Document #109436.

Corner references:

Forest County	N41°E	45.51 Feet
Aluminum Monument		
Telephone Pole(1400)	N56°W	35.40 Feet
North Rail of Soo	South	28.05 Feet
Line Track		

4. Quarter Corner to Sections 20 and 29; T37N, R15E.

Position found marked by a PK nail in surface of State Highway #139 and witnessed by two Forest Service brass caps by S-802, 1976. We replaced PK nail with a railroad spike.

Corner references:

Witness Corner	N42°-26'W	70.00 Feet
10" Aspen	S37°W	11.1 Feet
12" Red Pine	N43°W	7.2 Feet
Steel Sign Post	West	.5 Feet
Witness Corner	S38°-01'W	80.00 Feet
10" Oak	S50°W	22.1 Feet
8" Oak	N77°W	33.0 Feet
Steel Sign Post	West	.5 Feet

New references to Quarter Corner:

16"	Red Pine	N28°E	91.40 Feet
12"	Red Pine	S81°E	72.54 Feet

5. Quarter Corner to Sections 28 and 29; T37N, R15E.

Position found marked by a railroad spike in center of Rose Lake Road. Certificate on file by Thomas R. Arnott, S-887, dated 6/11/76, Document #109435.

Corner references:

Telephone Pole (4)	N80°E	15.73 Feet
Forest County	S22°E	55.18 Feet
Aluminum Monument		

New references:

8"	Sugar Maple	S85°W	45.40 Feet
6"	Sugar Maple	N47°W	58.78 Feet
	Steel Sign Post	N80°E	14.5 Feet

6. Quarter Corner to Sections 29 and 30; T37N, R15E.

Position found marked by a Forest County Aluminum Monument, S-1537, 1981. Document #120535.

Corner references:

5"	Red Maple	N23°E	18.08 Feet
11"	White Spruce	East	32.22 Feet
3"	White Pine	S19°E	28.27 Feet
6"	White Pine	N79°W	11.49 Feet
	Steel Sign Post	North	2.5 Feet

7. Quarter Corner to Sections 29 and 32; T37N, R15E.

Position found marked by a railroad spike, as set by Alan D. Harrison, S-1651 in 1986 and filed as Document #131690.

Corner references:

13"	White Pine	N61°E	110.27 Feet
	Power Pole #T3715	S70°E	94.90 Feet
	-32E1		
12"	White Pine	N24°W	88.07 Feet
	Steel Sign Post	South	25.95 Feet

8. West Sixteenth Corner to Sections 20 and 29; T37N, R15E.

Position found marked by a Forest Service brass cap by S-802, 1976.

Corner references:

11"	White Spruce	N73°W	22.18 Feet
11"	Red Pine	N23°E	26.37 Feet
	Steel Sign Post	North	.40 Feet

9. North Sixteenth Corner to Sections 29 and 30, T37N, R15E.
Position found marked by an aluminum cap (1 1/2") atop a 1" steel post, by CFI, S-1537, 1981.

Corner references:

10"	White Pine	S6°W	34.27 Feet
10"	White Pine	S76°W	14.88 Feet
	Steel Sign Post	North	2.5 Feet

CORNERS ESTABLISHED

1. Center North Sixteenth Corner of Section 29.
Position established on line and at midpoint between the North Quarter and Center Quarter Corners to Section 29.

Corner references:

13"	Red Oak	N58°E	66.96 Feet
10"	White Spruce	N64°W	81.32 Feet
	Steel Sign Post	East	17.3 Feet
	Centerline of	West	26.4 Feet
	Highway #139.		

SURVEYOR'S AFFIDAVIT

State of Wisconsin)
County of Forest) ss

I, Milo E. Stefan, a Registered Land Surveyor in the State of Wisconsin, hereby certify that I have surveyed and marked the boundaries to Forest Service lands in Section 29, Township 37 North, Range 15 East, Fourth Principal Meridian, State of Wisconsin.

The plat map and survey notes herein are a correct representation of the land surveyed and boundaries marked. I have surveyed and posted the boundaries in said sections in accordance with the rules for survey of the public lands and with the statutes of the State of Wisconsin.

Date of Survey: June 1988



Milo E. Stefan
Milo E. Stefan
Registered Land Surveyor S-1558
State of Wisconsin

Plat Ready for Filing: 8-10-88
Date

William A. Busch
District Ranger

