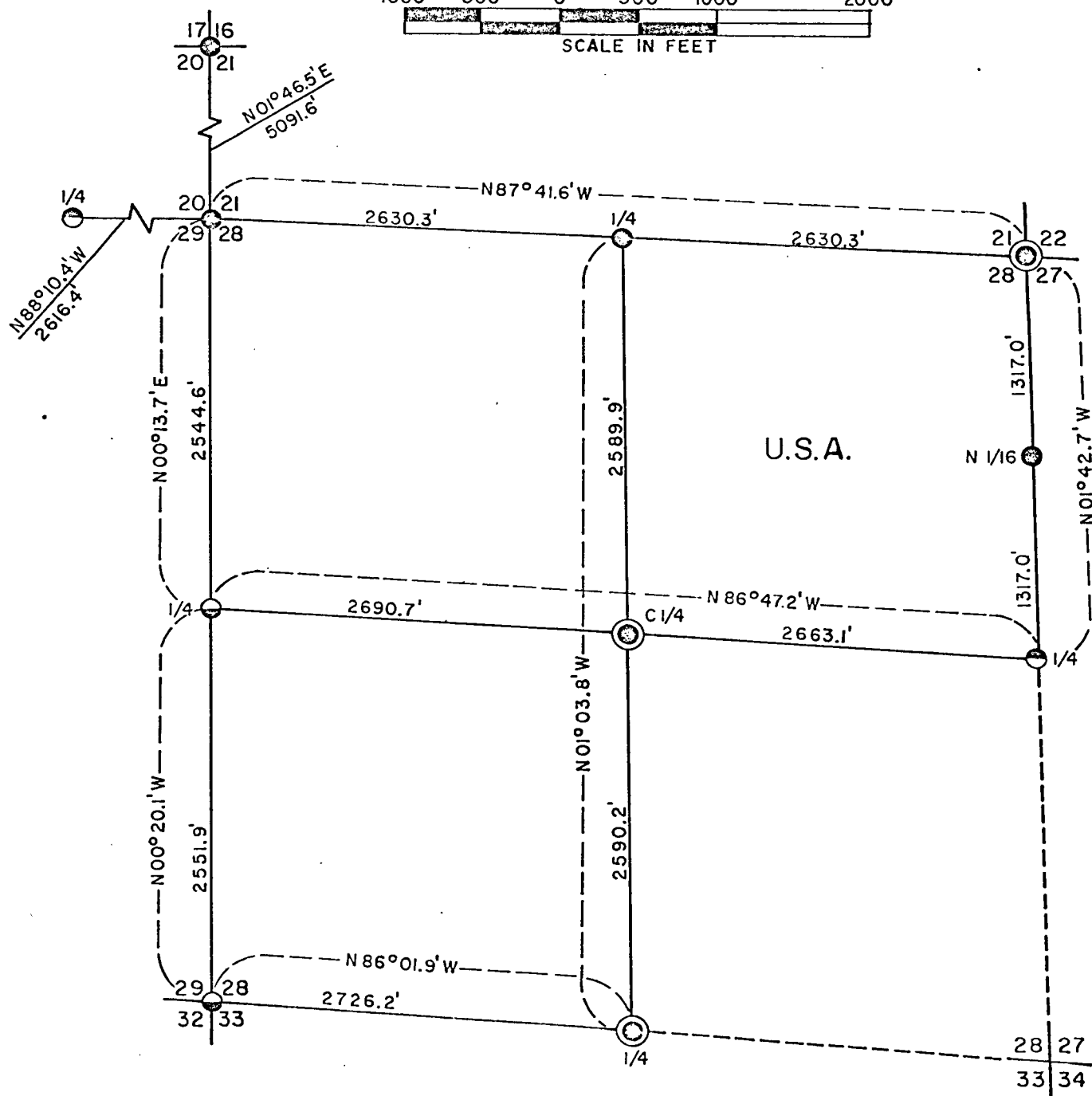
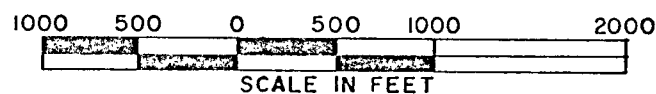


PLAT OF SURVEY
U. S. GOVERNMENT LAND
Being the NE 1/4 - Section 28
Township 37 North, Range 15 East, Fourth Principal Meridian
FOREST COUNTY, WISCONSIN



LEGEND

- Corner position marked by a 2 1/2 inch diameter concrete filled galvanized iron pipe capped with a 3 inch diameter brass tablet stamped to identify corner.
- ⊙ Corner position in highway marked by PK nail. Two reference monuments, of 2-1/2 inch Diameter Aluminum Pipes Placed off Road.
- ⊙ Corner position marked by a 2 1/2 inch diameter aluminum pipe monument.
- ⊙ Corner position in highway marked by railroad spike.

U.S.A. U.S. Government Land.

--- Unsurveyed section line.

CONVERSION FACTOR:

Feet to Meters - 0.304801

Meters to Feet - 3.280833

SURVEY NOTES

This survey was made by the U.S. Department of Agriculture, Forest Service, for the subdivision of Section 28, Township 37 North, Range 15 East, Fourth Principal Meridian, Forest County, Wisconsin. The purpose of the survey was to locate and mark the corners of U.S. Government land.

The U.S. Government land in Section 28 was acquired in the years 1935-39.

The original Government subdivision survey of this township was made in 1865.

The corner positions recovered, restored, and established by this survey are marked by the monument described in the map legend.

The bearings between corner positions are true bearings as determined by reference to Solar observations. The relative accuracy of the traverse control for corner restoration and establishment was one part in 3000.

The field survey notes and a copy of the plat of survey are on file in the Forest Supervisor's Office at Rhinelander, Wisconsin.

CORNERS RECOVERED AND RESTORED

1. Section Corner to Sections 28-29-32-33.

Corner monumented by S-887 in 1976. Corner certificate filed as Document No. 109436 in Forest County records on June 11, 1976.

2. Section Corner to Sections 20-21-28-29.

Corner position in east shoulder of north-south road restored by double proportionate measurement between the nearest recovered corners in each of the cardinal directions from the corner position.

Corner references:

Tamarack 8"	N59°E	53.6 feet
Tamarack 6"	S58°W	44.1 feet
Tamarack 7"	N62°W	40.0 feet
Center road	West	10.0 feet

3. Section Corner to Sections 16-17-20-21.

Corner position restored on centerline intersection of east-west and north-south roads as best remaining evidence of original corner.

Corner references:

Red pine 12"	S42°W	73.8 feet
White spruce 10"	N40°W	72.9 feet
Power pole	N75°E	40.1 feet

4. Section Corner to Sections 21-22-27-28.

Corner monumented by S-498. Corner certificate filed as Document No. 110099 in Forest County records on September 8, 1976.

5. Quarter Corner to Sections 28-29.

Corner monumented by S-887 in 1976. Corner certificate filed as Document No. 109435 in Forest County records on June 11, 1976.

6. Quarter Corner to Sections 21-28.

Corner position restored at midpoint and on line between the northwest corner and northeast corner of Section 28.

Corner references:

Black spruce 9"	S70°E	42.8 feet
Black spruce 10"	N65°W	10.3 feet
Steel post	Northeast	0.5 feet

7. Quarter Corner to Sections 27-28.

Corner restored at intersection of U.S. Highway 8 and road north according to highway survey ties to corner.

Corner references:

Reference Monument 1, set N33E, 75 feet from corner		
Aspen 7	N68°E	17.70 feet
White birch 12	N23°E	21.99 feet
Reference Monument 2, set S31E, 75 feet from corner		
Power pole #3715-27-L1	N29°E	21.22 feet
Tamarack 9	S41°E	26.09 feet

8. Quarter Corner to Sections 28-33.

Corner monumented by S-498. Corner certificate filed as Document No. 108442 in Forest County records on December 23, 1975.

9. Quarter Corner to Sections 20-29.

Corner position in center of State Highway No. 139 restored from 1934 highway station ties to corner.

1. Reference Monument	N42°26'W	70.0 feet
Aspen 10"	S37°W	11.1 feet
Red pine 13"	N43°W	7.2 feet
Sign post	West	0.5 feet
2. Reference monument	S38°01'W	80.0 feet
Oak 10"	S50°W	22.1 feet
Oak 8"	N77°W	33.0 feet
Sign post	West	0.5 feet

CORNERS ESTABLISHED

1. Center Quarter Corner.

Corner position in center of old abandoned road established on the intersection of the straight lines between opposing quarter corners on the perimeter of Section 28.

Corner reference:

Steel sign post	Northeast	0.5 feet
-----------------	-----------	----------

2. North Sixteenth Corner to Sections 27-28.

Corner position established at midpoint and on line between the east quarter corner and the northeast corner of Section 28.

Corner References:

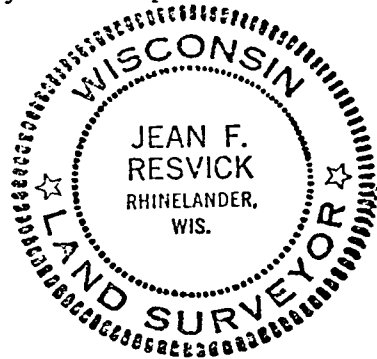
White spruce 14"	S50°W	64.2 feet
White spruce 6"	N70°W	68.7 feet

SURVEYOR'S AFFIDAVIT

State of Wisconsin)
County of Forest) ss

I, Jean F. Resvick, Land Surveyor, U.S. Forest Service, and a registered land surveyor in the State of Wisconsin, hereby certify that I have surveyed and subdivided Section 28, Township 37 North, Range 15 East, Fourth Principal Meridian, Forest County, Wisconsin.

The plat map and survey notes herewith are a correct representation of the land surveyed and subdivided. I have surveyed and subdivided said section in accordance with the rules for the survey of the public lands and the statutes of the State of Wisconsin.



Land Surveyor, U.S. Forest Service
R.L.S. State of Wisconsin
Certificate S-802

Date of Survey: 1977