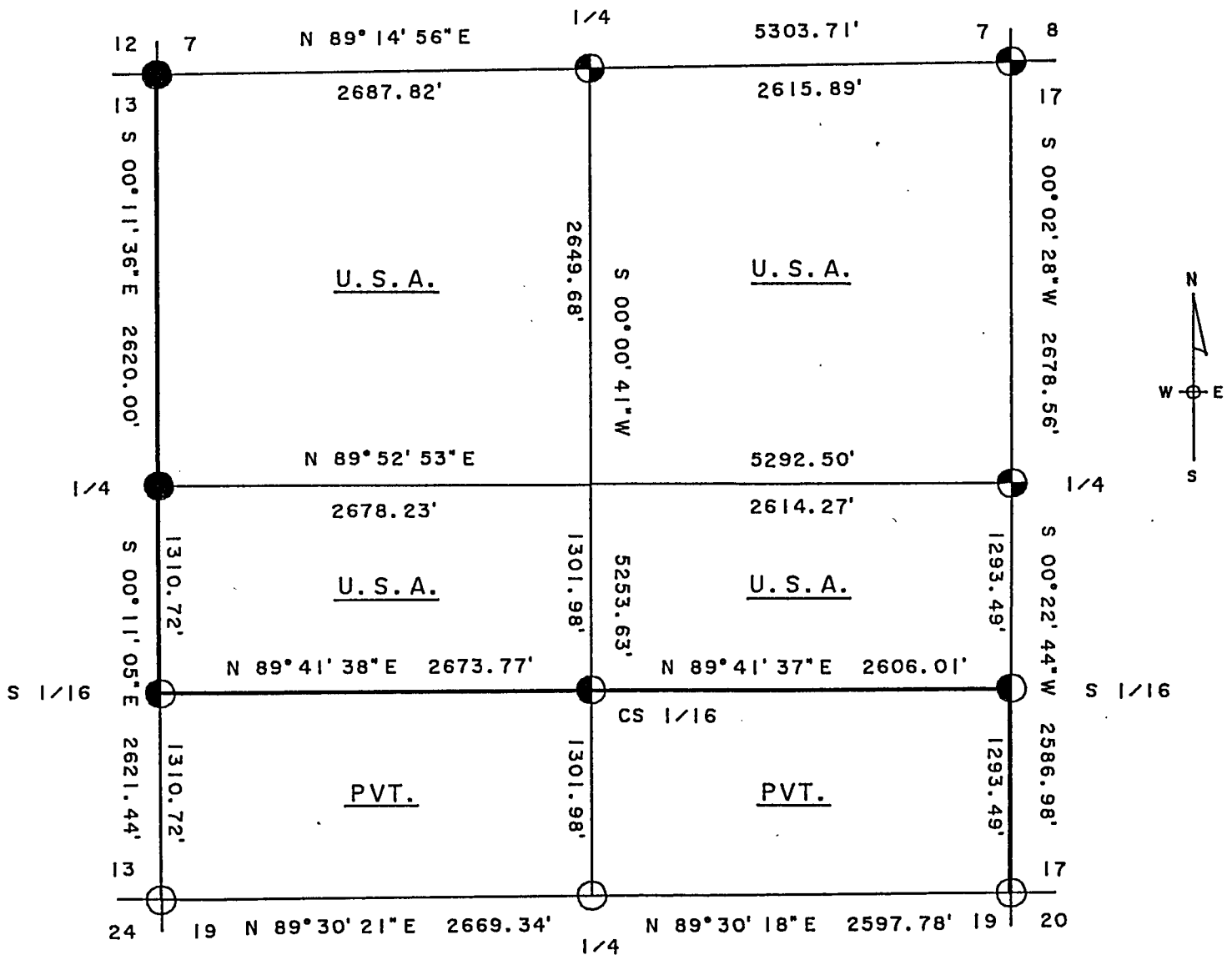


SHEET 1 OF 3

BEING THE N.W. 1/4; THE N.E. 1/4; THE N. 1/2, S.E. 1/4 AND  
N. 1/2, S.W. 1/4; SECTION 18; TOWNSHIP 37 NORTH;  
RANGE 15 EAST; FOURTH PRINCIPAL MERIDIAN;  
FOREST COUNTY; WISCONSIN.



- BRASS CAPPED MONUMENT, FOUND IN PLACE.
- FOREST COUNTY ALUMINUM MONUMENT, FOUND IN PLACE.
- ◐ 2 1/2" X 36" ALUMINUM MONUMENT, SET THIS SURVEY.
- ◑ 1" X 36" ALUMINUM MONUMENT, SET THIS SURVEY.
- MARKED BOUNDARY LINES OF U.S. GOVERNMENT LANDS.

Stock No. 26273

Sheet 2 of 3

SURVEY NOTES

This survey was made by the U.S. Department of Agriculture, Forest Service, for the purpose of restoring and establishing corners on the perimeter of Section 18 for establishing subdivisional corners within Section 18 and for locating and marking the boundaries of U.S. Government land on their perimeter and within Section 18 Township 37 North, Range 15 East, 4th Principal Meridian, Forest County, Wisconsin.

The U.S. Government lands in this section were acquired in 1935 and 1938.

The original government subdivision survey of this township was made in 1857 and 1865.

The corner positions recovered, restored and established by this survey are marked by the monument described in the map legend.

The corner positions established were located to an accuracy of one part in 5000.

The bearings between corner positions are true bearings as determined by solar observations.

The field notes of this survey and a copy of this plat are on file in the Forest Supervisor's Office at Rhinelander, Wisconsin.

CORNERS RECOVERED OR RESTORED

1. Corner Common to Sections 7, 12, 13 and 18.  
Corner monumented by Philip Hansen, R.L.S. Certificate on file in Forest County.
2. Corner Common to Sections 13, 18, 19 and 24.  
Corner monumented by Jean Resvick, R.L.S. Certificate on file in Forest County.
3. Corner Common to Sections 17, 18, 19 and 20.  
Corner monumented by Jean Resvick, R.L.S. in 1977 off of state highway surveys. Corner 0.40' below road surface.  
Corner References:
 

Spruce	8"	N.38°E.	46.35 feet
Scotch Pine	14"	S.8°E.	28.58 feet
Scotch Pine	11"	S.28°W.	39.89 feet
Red Pine	15"	N.12°W.	26.31 feet
4. Corner Common to Sections 7, 8, 17 and 18.  
Corner monumented by Alan Harrison, R.L.S. Certificate on file in Forest County.
5. Quarter Corner to Sections 17 and 18.  
Corner monumented by Alan Harrison, R.L.S. Certificate on file in Forest County.
6. Quarter Corner to Sections 18 and 19.  
Corner monumented by Jean Resvick, R.L.S. Certificate on file in Forest County.
7. Quarter Corner to Sections 13 and 18.  
Corner monumented by Dan Ploeger, R.L.S. Certificate on file in Forest County.



Stock No. 26273

Sheet 3 of 3

8. Quarter Corner to Sections 7 and 18.

Corner position was not located. Restored corner by proportional positioning.  
Corner References:

Aspen	3"	N.82°E.	10.54 feet
Aspen	3"	S.38°W.	23.05 feet
Aspen	3"	N.3°W.	13.18 feet
Steel Sign Post		Southwest	1.24 feet

9. South One-Sixteenth Corner to Sections 13 and 18.

Found iron pipe with brass cap bent over as if hit by logging skidder.  
Set new monument at mid-point and on line between West 1/4 and S.W. section corners.

Corner References:

Red Pine	13"	N.71°E.	14.00 feet
Spruce	9"	S.63°E.	20.15 feet
Steel Sign Post		North	0.79 feet
Damaged Iron Pipe		S.32°E.	0.41 feet

CORNERS ESTABLISHED1. South One-Sixteenth Corner to Sections 17 and 18.

Corner established mid-point and on line between the East 1/4 and S.E. section corners.

Corner References:

Red Pine	9"	N.1°W.	23.21 feet
Spruce	10"	S.87°E.	21.60 feet
Steel Sign Post		West	1.29 feet

2. Center-South One-Sixteenth Corner to Section 18.

Corner established mid-point and on line between the center 1/4 position and the South 1/4 corner.

Corner References:

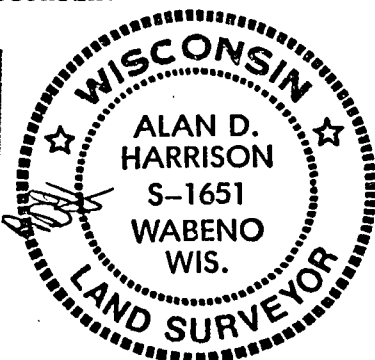
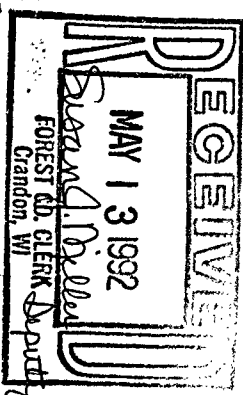
Spruce	10"	N.14°W.	18.45 feet
Spruce	6"	S.72°E.	14.37 feet
Steel Sign Post		East	0.92 feet

SURVEYOR'S AFFIDAVIT

State of Wisconsin ] SS  
County of Forest ]

I, Alan D. Harrison, Land Surveyor, U.S.D.A. Forest Service and a Registered Land Surveyor in the State of Wisconsin, do hereby certify that I have surveyed and subdivided Section 18, Township 37 North, Range 15 East, Fourth Principal Meridian, State of Wisconsin.

The plat map and the notes herewith are a correct representation of the land surveyed and divided. I have surveyed and subdivided said section in accordance with the rules for survey of the public lands and with the statutes of the State of Wisconsin.



Alan D. Harrison  
LAND SURVEYOR, U.S.D.A. Forest Service  
R.L.S. Number S-1651  
State of Wisconsin

Plat Ready For Filing:

Sue Vap  
District Ranger

Date of Survey: 1991