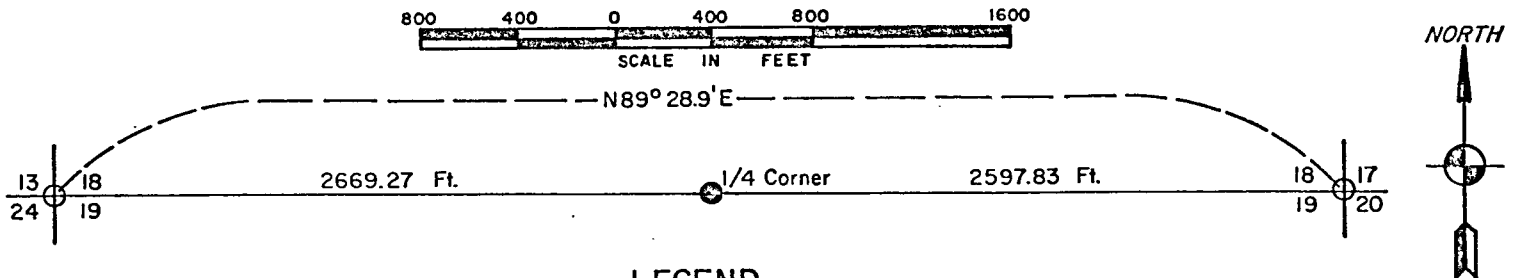


CERTIFIED CORNER RESTORATION  
BEING THE SOUTH QUARTER CORNER OF SECTION 18  
TOWNSHIP 37 NORTH, RANGE 15 EAST  
FOURTH PRINCIPAL MERIDIAN, COUNTY OF FOREST, STATE OF WISCONSIN



LEGEND

- 2 inch inside diameter galvanized iron pipe 3 feet long, filled with concrete with brass cap stamped to identify corner.
- Corners monumented and recorded previously.

Survey Notes

This survey of the south line of Section 18, Township 32 North, Range 15 East, Fourth Principal Meridian was made by the U.S. Department of Agriculture, Forest Service.

The purpose of this survey is to restore the quarter corner between Sections 18 and 19 according to Bureau of Land Management Rules and the Wisconsin Statutes.

Corner Restored

1. Quarter corner between Sections 18-19.

Restored quarter corner at proportional distance and on line between the section corners.

New Corner References:

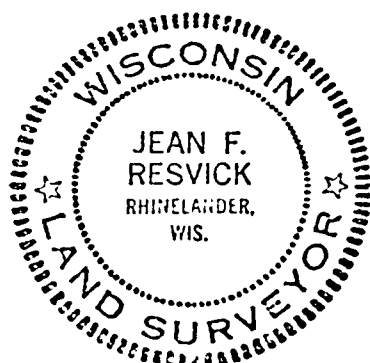
Red Pine 7	N31E	44.73 feet
Scotch Pine 14	S53E	76.57 feet
Monument 0.4 feet below surface of road at driveway south		

Surveyor's Affidavit

State of Wisconsin)  
County of Forest ) ss

I, Jean F. Resvick, Land Surveyor, U.S. Forest Service, and a registered land surveyor in the State of Wisconsin, hereby certify that I have restored the quarter corner between Sections 18 and 19, Township 37 North, Range 15 East, Fourth Principal Meridian, State of Wisconsin.

The plat map and survey notes are a correct representation of the corners recovered and restored.



*Jean F. Resvick*  
Land Surveyor, U.S. Forest Service  
R.L.S. State of Wisconsin  
Certificate S-802

Date of Survey: 1978