

PLAT OF SURVEY

THE NE 1/4 OF THE SW 1/4 AND PART OF THE NW 1/4 OF THE SW 1/4
SECTION 29, T37N R13E,
TOWN OF ARGONNE
FOREST COUNTY, WISCONSIN

RECEIVED

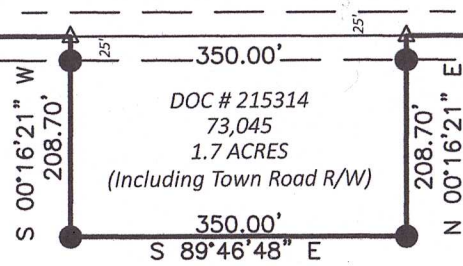
OCT 23 23

CO. TREASURER

W1/4 CORNER
SECTION 29
(PK NAIL)

QUARTER LINE ROAD

C1/4 CORNER
SECTION 29
(1 INCH IRON PIPE)



NW 1/4 - SW 1/4
1,680,463 SQ. FT.
38.6 ACRES
(Including Railroad R/W)

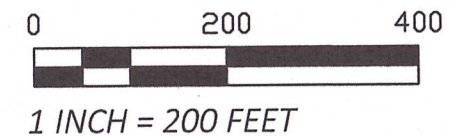
NE 1/4 - SW 1/4
1,756,176 SQ. FT.
40.3 ACRES
(Including Railroad R/W)

4-702

4-704

LEGEND

- FOREST COUNTY PLSS (AS NOTED)
- 3/4 INCH REBAR, SET
- COMPUTED POSITION (NOT MONUMENTED)



BEARINGS REFERENCED TO THE
FOREST COUNTY COORDINATE
SYSTEM NAD83 (2011)

FOREST CO SURVEYOR

FILE # 371329-20231010

DATE 11/6/23 BY KL



SW CORNER
SECTION 29
(BRASS CAP MONUMENT)

SW CORNER
SECTION 29
(BRASS CAP MONUMENT)