

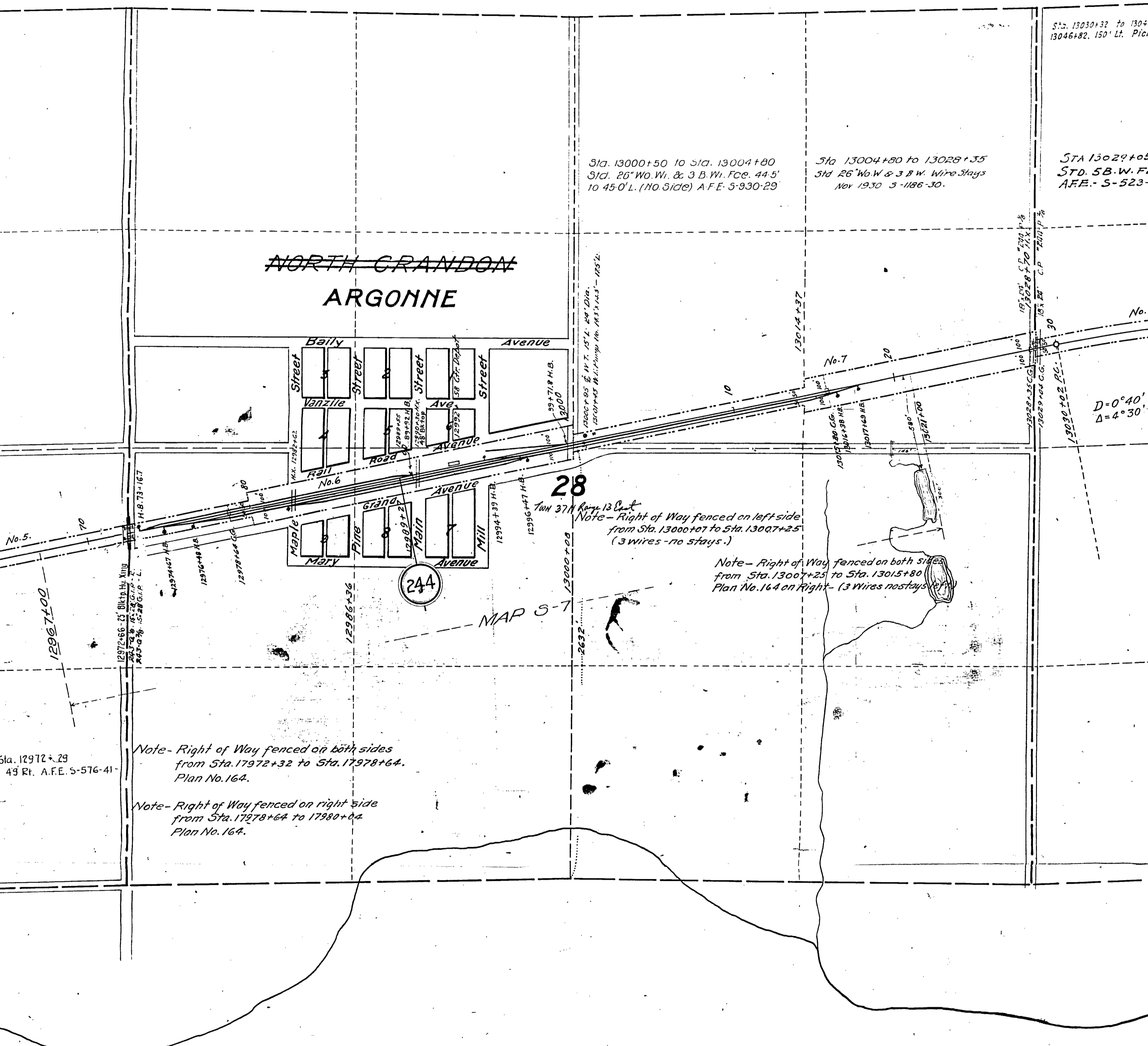
Sta. 13030+32 to 13040+00  
13046+82, 150' Lt. Pick

Sta 13024+05  
Std. 5B.W. Fe.  
A.F.E. - S-523-

Sta. 13000+50 to Sta. 13004+80  
Std. 26" Wo. Wi. & 3 B. Wi. F.C. 44-5'  
to 45-0' L. (No Side) A.F.E. 5-930-29

Sta 13004+80 to 13028+35  
Std 26" Wo. W & 3 B W. Wire Stays  
Nov 1930 5-1186-30.

# NORTH GRANDON ARGONNE



Sta. 12972+29  
49 Rt. A.F.E. 5-576-41

Note- Right of Way fenced on both sides  
from Sta. 17972+32 to Sta. 17978+64.  
Plan No. 164.

Note- Right of Way fenced on right side  
from Sta. 17978+64 to 17980+04  
Plan No. 164.

28

Right 13 Cent  
Note - Right of Way fenced on left side  
from Sta. 13000+07 to Sta. 13007+25  
(3 wires - no stays.)

Note - Right of Way fenced on both sides  
from Sta. 13007+25 to Sta. 13015+80  
Plan No. 164 on Right - (3 Wires no stays)

MAP 5-7

FOREST CO SURVEYOR  
FILE # 371328-  
DATE \_\_\_\_\_ BY \_\_\_\_\_

Section 28 Township 37 Range 13 East