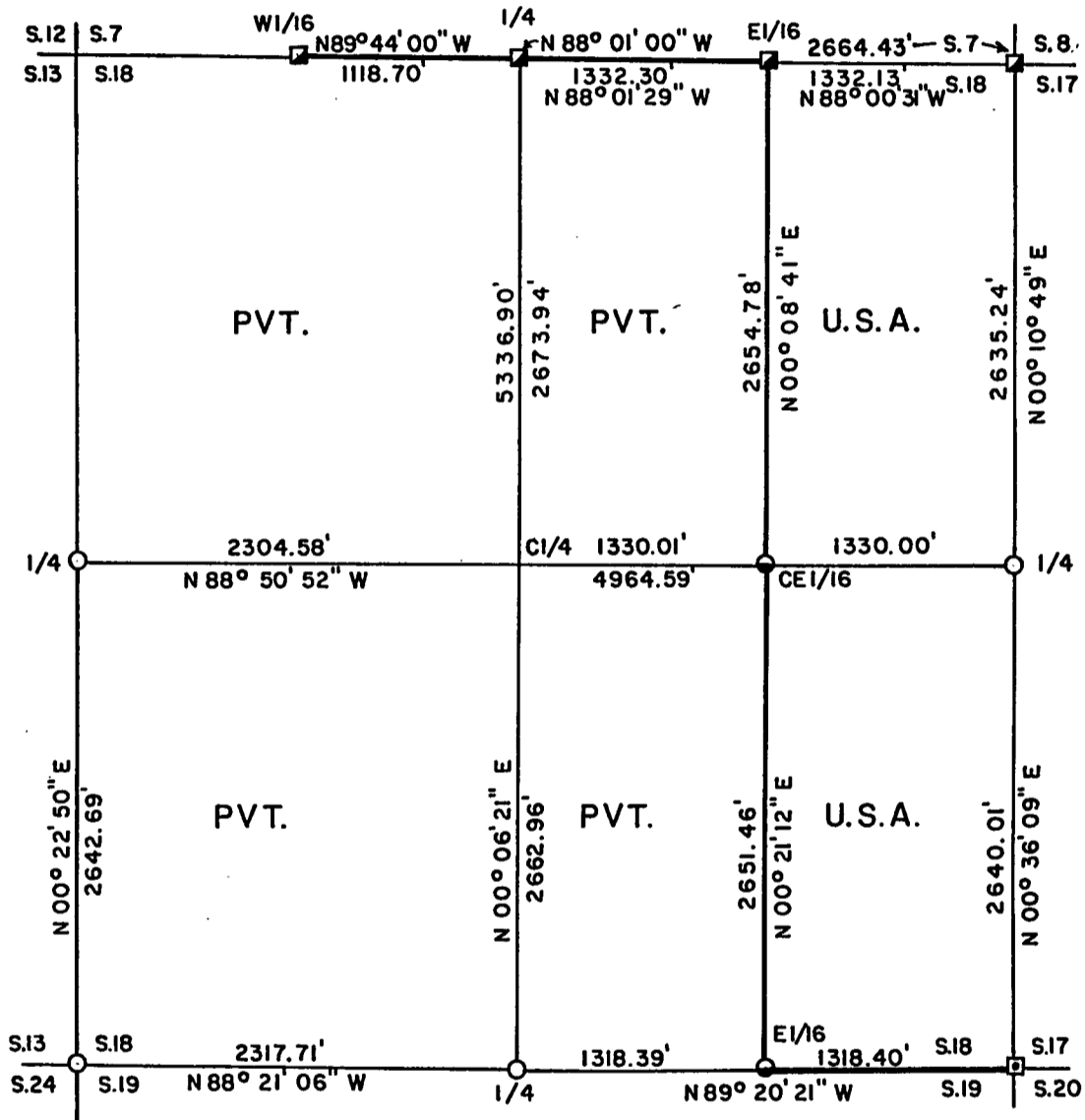


Stock No. 26273

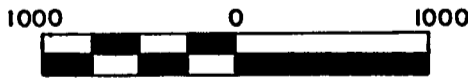
FOREST CO SURVEYOR  
 FILE # 371318-19930812  
 DATE \_\_\_\_\_ BY \_\_\_\_\_

Sheet 1 of 5

**PLAT OF SURVEY FOR CERTIFIED LAND CORNER RESTORATION AND ESTABLISHMENT**  
 BEING THE CORNERS FOR THE E1/2-NE1/4 AND E1/2 - SE1/4 OF SECTION 18, T.37N. R.13E., FOURTH PRINCIPAL MERIDIAN  
 COUNTY OF FOREST, STATE OF WISCONSIN



SCALE 1" = 1000'



Scale in feet

LEGEND

- ▣ 2 inch I.D. iron pipe monument with a brass cap set by U.S.F.S.
  - 2½ inch diameter aluminum pipe monument, 36" long with an aluminum cap stamped to identify the corner
  - 1 inch diameter aluminum pipe monument, 36" long with an aluminum cap stamped to identify the corner
  - ▣ 2½ inch diameter aluminum pipe monument, 10' long with an aluminum cap set by U.S.F.S.
  - Boundary line marked to Forest Service standards
- Note: Bearings are true bearings as referenced to the East one-half of the South Section line of Section 7 as determined by a polaris observation by Jean F. Resvick RLS (U.S.F.S.) from a Plat of Survey of 1965-66, 1969-71.

Stock No. 26273

T 37 N R 13 E - SECTION 18

Sheet 2 of 5

SURVEY NOTES

This survey was made by Gary L. Pisoni, a Registered Land Surveyor in the State of Wisconsin, for the U.S.D.A., Forest Service, for the purpose of recovering, restoring, establishing, marking, and perpetuating the corners and boundary lines of U.S. Government Land on the perimeter and within Section 18, Township 37 North, Range 13 East, Fourth Principal Meridian, Forest County, State of Wisconsin, as shown on the plat map herewith.

The Original Government Sub-division of this township was made in 1858 for the township lines and in 1865 for the subdivision of the township by J.L. Nowlin.

The bearings between corner positions are true bearings referenced to the East One-Half of the South section line of Section 7, as determined by a polaris observation by Jean F. Resvick, RLS (U.S.F.S.) from a Plat of Survey of 1965-66, 1969-71 of Section 7. All distances shown thereon are in feet and hundredths of feet. The control traverse was measured by use of an electronic distance measuring equipment.

The accuracy of this survey exceeds the State requirements of 1 in 3000.

The field notes and a copy of the Plat of Survey are on file in the Forest Supervisor's Office at Rhinelander, Wisconsin.

CORNERS RECOVERED AND RESTORED1. Southwest Section Corner

Jean F. Resvick, RLS (U.S.F.S.) on July 27, 1971 found an iron pipe under the black top in center of crossroads and also found a 3/4" X 1 1/2" iron bar 12" long along side of iron pipe. Also, found a 1 1/4" Iron pipe 6" long along side of iron pipe. Resvick accepted the iron pipe and iron bar as the best available evidence and replaced the iron pipe with a 6" dia. brass capped concrete monument. Corner later restored (after concrete monument was destroyed) by William B. Cochrane, RLS (U.S.F.S.) with a 2 1/2" dia. aluminum pipe monument in 1984.

1971 Corner References Found:

Elm (Dead)	9"	N 36°E	28.21 feet
Elm	15"	N 54°W	39.82 feet
Power Pole #3712-24E36		S 58°W	46.19 feet

New Corner References:

Red Pine	11"	N 40°E	44.48 feet
Utility Pole #3713-19W2		S 60°E	49.72 feet
Steel Sign Post		S 43°W	36.88 feet

2. West Quarter Corner

John Schulke, RLS. on October 10, 1989 found a 1 1/4" dia. well point at the fence corner. Fences run North, South, and West. Schulke accepted the location as the best available evidence of the original corner and replaced the well point with an aluminum monument.

Corner References:

Basswood (clump)	16"	N 33°E	37.74 feet
Aspen	6"	S 68°E	21.77 feet
Sugar Maple	6"	S 16°E	94.67 feet
Steel Sign Post		NE	0.70 feet

Stock No. 26273

T37N R13E - SECTION 18

Sheet 3 of 5

3. West Sixteenth Corner between Sections 7 and 18.

Jean F. Resvick established the corner position by proportionate measurement between the South quarter corner and the Southwest Section corner of Section 7.

## Corner References:

Spruce	3"	N 05°E	18.40 feet
Spruce	3"	N 81°E	28.40 feet
Steel Sign Post		North	0.20 feet

4. North Quarter Corner

Jean F. Resvick established the corner position found marked by an iron pipe. Location is in accordance with record measurements from adjacent corner positions.

## 1970 Corner References by Jean F. Resvick:

Maple	6"	N 80°E	39.40 feet
Basswood	6"	S 40°W	17.60 feet
Yellow Birch	7"	N 76°W	62.60 feet
Steel Sign Post		North	2.00 feet

## Corner References Found:

Sugar Maple	14"	N 82°E	39.36 feet
Basswood	11"	S 38°W	17.60 feet
Yellow Birch	13"	N 75°W	62.65 feet
Steel Sign Post		North	2.00 feet

5. East Sixteenth Corner between Sections 7 and 18

Jean F. Resvick established the corner position at midpoint and on line between the South quarter corner and the Southeast Section corner of Section 7.

## 1970 Corner References by Jean F. Resvick:

Maple	5"	N 36°E	24.90 feet
Maple	4"	S 16°E	15.00 feet
Steel Sign Post		NE	1.10 feet

## Corner References Found:

Maple	8"	N 35°E	24.67 feet
Maple	7"	S 15°E	14.89 feet
Steel Sign Post		N 14°W	0.70 feet

## New Corner Reference:

Ash	6"	N 54°W	13.74 feet
-----	----	--------	------------

6. Northeast Section Corner

Jean F. Resvick established the corner position found marked by an iron pipe. Location is in accordance with record measurements from adjacent corner positions.

## 1970 Corner References:

Balsam	6"	N 83°E	51.80 feet
Spruce	13"	N 41°W	50.70 feet

7. East Quarter Corner

William B. Cochrane, RLS (U.S.F.S.) on April 10, 1991, found a 1 3/4" dia. well pipe and accepted it as the best available evidence for restoring the corner position. Replaced well pipe with an aluminum pipe monument. East-West fence line starts East of the corner approximately 200 feet.

## Corner References:

Black Spruce	10"	S 58°E	37.49 feet
Balsam (Dbl.)	13"	S 10°E	49.13 feet
Steel Sign Post		NE	1.00 feet

Stock No. 26273

T37N R13E - SECTION 18

Sheet 4 of 5

8. Southeast Section Corner

William B. Cochrane, RLS. (U.S.F.S.) on April 10, 1991, found a 2" dia. iron pipe and an old post point lying on the ground next to pipe. Also found badly decayed original bearing tree tamarack stumps. Cochrane accepted the iron pipe as the best available evidence for restoring the corner position, and replaced it with an aluminum pipe monument.

## Corner References:

Spruce	5"	N 03°E	16.33 feet
Tamarack	5"	N 88°E	12.99 feet
Spruce	5"	S 04°E	12.45 feet
Tamarack	4"	S 58°W	20.78 feet
Steel Sign Post		NE	1.00 feet

9. South Quarter Corner

According to quadrangle maps, Forest County plat book, and farmers fences, the intersection of an East-West town road and a town road running North is the accepted position for the corner.

Corner position restored in the centerline at the intersection of an East-West town road and a town road running North. I accepted this method as the best available method for restoring the corner position. Other corners in the area are using road centerlines for restoring their positions. Private property owners are using the centerlines of the town road as the forty lines.

## Corner References:

Basswood	15"	N 75°W	74.62 feet
Utility Pole #3713-19E4		S 36°E	34.98 feet
Reference Monument		S 00°36'28"E	27.63 feet
Steel Sign Post		S 00°36'28"E	28.30 feet

CORNERS ESTABLISHED2. East Sixteenth Corner between Sections 18 and 19.

Corner position restored at midpoint and on line between the Southeast Section corner and South Quarter corner of Section 18.

## Corner References:

Sugar Maple	14" (Db1.)	S 55°E	2.51 feet
Black Cherry	7" (Db1.)	N 21°W	29.21 feet
Steel Sign Post		N 47°E	1.29 feet

3. Center East Sixteenth Corner

Corner position established at midpoint and on line between the East quarter corner and the Center quarter corner.

## Corner References:

Sugar Maple	14"	N 62°W	41.91 feet
Iron Pipe Found (1 1/4 Dia.)		N 70°W	14.53 feet
White Spruce	18"	N 25°E	52.16 feet
Steel Sign Post		East	1.06 feet

Stock No. 26273

T37N R13E - SECTION 18

Sheet 5 of 5

SURVEYOR'S CERTIFICATED

State of Wisconsin)ss  
County of Forest)

I, Gary L. Pisoni, a Cadastral Surveyor, and a Registered Land Surveyor in the State of Wisconsin, hereby certify that I have surveyed and sub-divided Section 18, Township 37 North, Range 13 East, Fourth Principal Meridian, State of Wisconsin.

The plat map and survey notes herewith are a correct representation of the land surveyed and divided. I have surveyed and sub-divided said section in accordance with the rules for the survey of public lands and with the statutes of the State of Wisconsin.

Date of Survey: 1993

*Gary L. Pisoni*  
\_\_\_\_\_  
Cadastral Surveyor  
R.L.S. State of Wisconsin  
Certificate S-1634



Survey Requested by:

*Sue Vap*  
\_\_\_\_\_  
District Ranger

*8/12/93*  
\_\_\_\_\_  
Date

