

Stock No. 26273

FOREST CO SURVEYOR

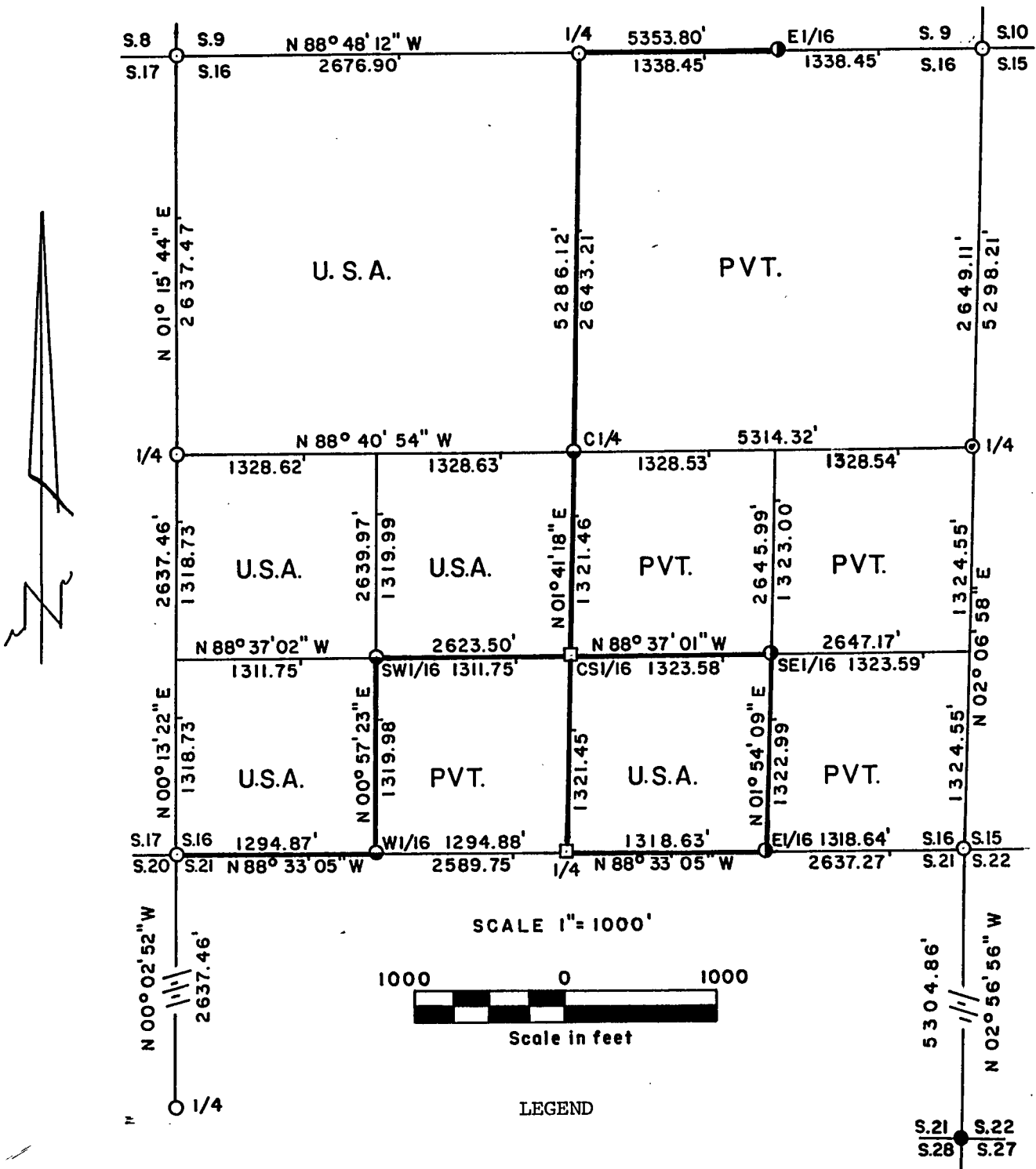
FILE # 371316-19930812

DATE \_\_\_\_\_ BY \_\_\_\_\_

Sheet 1 of 5

PLAT OF SURVEY FOR CERTIFIED LAND CORNER RESTORATION AND ESTABLISHMENT

BEING THE CORNERS FOR THE NW 1/4, W 1/2 - SW 1/4, NE 1/4 - SW 1/4 AND SW 1/4 - SE 1/4 OF SECTION 16, T. 37N. R. 13E., FOURTH PRINCIPAL MERIDIAN COUNTY OF FOREST, STATE OF WISCONSIN



- 1 inch by 18 inch iron pipe set by Philip T. Hansen RLS
  - Railroad spike set
  - ⊙ 2½ inch diameter aluminum pipe monument, 60" long with an aluminum cap stamped to identify the corner
  - 2½ inch diameter aluminum pipe monument, 36" long with an aluminum cap
  - 1 inch diameter aluminum pipe monument, 60" long with an aluminum cap
  - 1 inch diameter aluminum pipe monument, 36" long with an aluminum cap
  - Boundary line marked to Forest Service standards
- Note: Bearings are true bearings as referenced to the West one-half of the South Section line of Section 3 as determined by a solar observation by Kim H. Pritzlaff RLS from a Plat of Survey of 1985 of Section 3.



Stock No. 26273

T37N R13E - Section 16

Sheet 2 of 5

SURVEY NOTES

This survey was made by Gary L. Pisoni, a Registered Land Surveyor in the State of Wisconsin, for the U.S.D.A., Forest Service, for the purpose of recovering, restoring, establishing, marking, and perpetuating the corners and boundary lines of U.S. Government Land on the perimeter and within Section 16, Township 37 North, Range 13 East, Fourth Principal Meridian, Forest County, State of Wisconsin, as shown on the plat map herewith.

The Original Government Sub-division of this township was done in 1865 by J.L. Nowlin.

The bearings between corner positions are true bearings referenced to the West One-Half of the South section line of Section 3, as determined by a solar observation by Kim H. Pritzlaff of AARON ASSOCIATES from a Plat of Survey of 1985 of Section 3. All distances shown thereon are in feet and hundredths of feet. The control traverse was measured by use of an electronic distance measuring equipment.

The accuracy of this survey exceeds the State requirements of 1 in 3000.

The field notes and a copy of the Plat of Survey are on file in the Forest Supervisor's Office at Rhinelander, Wisconsin.

CORNERS RECOVERED AND RESTORED1. Northwest Section Corner

Corner position restored in centerline of North-South road and by using single proportionate measurements between the Northwest Section corner of Section 9 and the Quarter corner between Sections 20 and 21. This Section line was divided over the 2.5 miles into equal portions.

Corner References:

Ash	7"	N 49°E	29.37 feet
Ash	14"	S 86°E	21.16 feet
Red Maple	8"	S 68°W	28.44 feet
Ash	7"	N 45°W	43.76 feet
Steel Sign Post		West	15.03 feet

2. North Quarter Corner

Corner position restored by using single proportionate measurements and on line between the Northwest and Northeast Section corners of Section 16.

Corner References:

Sugar Maple	13"	N 12°W	14.78 feet
Sugar Maple	10"	N 23°E	33.82 feet
Sugar Maple	12"	N 64°E	26.77 feet
Basswood	12"	S 37°W	44.50 feet
Steel Sign Post		West	0.62 feet

Stock No. 26273

T37N R13E - Section 16

Sheet 3 of 5

3. Northeast Section Corner

Corner position restored in line with centerline of Highway 55 to the North, in line with an old fence line to the West and in line with 2 state highway Right-of-Way markers to the East. Local property owners are using this position as the accepted Section corner.

## Corner References:

Balsam	10"	S 65°E	77.08 feet
Red Pine	15"	N 67°E	87.14 feet
Utility Pole #3713-10L1		N 39°E	97.71 feet
Centerline Highway 55		West	12.70 feet
Steel Sign Post		N 89°34'00" E	41.17 feet

4. East Quarter Corner

Corner position restored by using single proportionate measurements and on line between the Northeast and Southeast Section corners of Section 16.

## Corner References:

Steel Sign Post		North	1.05 feet
Steel Sign Post		East	1.00 feet

5. Southeast Section Corner

Corner position restored by Double proportionate measurements between the Northeast Section corner of Section 16 and Southeast Section corner of Section 21 and between the Southwest Section corner of Section 16 and Southeast Section corner of Section 15.

## Corner references:

Ash	10"	N 44°E	24.60 feet
Ash	5"	S 86°E	19.43 feet
Tamarack	13"	S 28°E	54.97 feet
Ash	10"	S 73°W	27.67 feet
Steel Sign Post		N 46°E	0.67 feet

6. South Quarter Corner

Corner position restored in the centerline of Highway 55 and on line between the Southwest and Southeast Section corners of Section 16.

## Corner References:

Red Maple	9" Db1.	East	46.31 feet
Utility Pole #3713-21E5		S 69°E	29.90 feet
Utility Pole #3713-21W4		S 74°W	29.99 feet
Red Maple	7"	N 58°W	57.98 feet
Witness Corner		S 88°33'05"E	25.65 feet
Steel Sign Post		S 88°33'05"E	27.58 feet

7. Southwest Section Corner

Corner position restored in the centerline of the North-South road and by using single proportionate measurements between the Northwest Section corner of Section 9 and the West Quarter corner of Section 21. This Section line was divided over the 2.5 miles into equal portions.

## Corner references:

Red Maple	11"	N 31°E	55.82 feet
Red Maple	12"	N 85°E	36.90 feet
Sugar Maple	7"	S 32°W	43.39 feet
Red Maple	7"	S 67°W	24.86 feet
Steel Sign Post		West	13.75 feet

Stock No. 26273

T37N R13E - Section 16

Sheet 4 of 5

8. West Quarter Corner

Corner position restored in the centerline of the North-South road and by using single proportionate measurements between the Northwest Section corner of Section 16 and the Southwest Section corner of Section 16.

Corner references:

Basswood	14"	N 75°E	54.97 feet
Basswood	11"	S 77°E	56.29 feet
Sugar Maple	8"	S 45°E	56.00 feet
Steel Sign Post		N 85°W	12.40 feet

CORNERS ESTABLISHED1. Center Quarter Corner

Corner position established at the intersection of the straight lines between opposing quarter corner positions on the perimeter of the section.

Corner References:

Ash	13"	S 48°E	17.16 feet
Sugar Maple	9"	N 84°W	5.50 feet
Steel Sign Post		N 58°E	1.00 feet

2. East Sixteenth Corner between Sections 9 and 16.

Corner position established at midpoint and on line between the Northeast Section corner and North Quarter corner of Section 16.

Corner References:

Hemlock	22"	S 61°W	122.46 feet
Cedar	10"	S 84°W	77.69 feet
Steel Sign Post		South	0.73 feet

3. Center South Sixteenth Corner

Corner position established at midpoint and on line between the South quarter corner and the Center quarter corner.

Corner References:

Cedar	10"	N 89°E	123.72 feet
Cedar	11"	S 62°E	118.43 feet
Witness Corner		S 88°37'01"E	55.58 feet
Steel Sign Post		S 88°37'01"E	56.70 feet

4. Southeast Sixteenth Corner

Corner position established at the intersection of the straight lines between opposing sixteenth corner positions on the perimeter of the Southeast Quarter of Section 16.

Corner References:

Cedar	12"	S 74°E	18.18 feet
Cedar	12"	S 06°E	12.55 feet
Steel Sign Post		S 60°W	0.59 feet

Stock No. 26273

T37N R13E - Section 16

Sheet 5 of 5

5. East Sixteenth Corner between Sections 16 and 21.

Corner position established at midpoint and on line between the Southeast Section corner and South Quarter corner of Section 16.

## Corner References:

Black Spruce	6"	S 20°W	12.66 feet
Cedar	8"	N 87°E	13.45 feet
Steel Sign Post		N 32°W	0.75 feet

6. West Sixteenth Corner between Sections 16 and 21.

Corner position established at midpoint and on line between the Southwest Section corner and South Quarter corner of Section 16.

## Corner References:

Basswood	9"	N 02°W	35.72 feet
Sugar Maple	9"	S 70°E	25.88 feet
Steel Sign Post		N 40°W	0.70 feet

7. Southwest Sixteenth Corner

Corner position established at the intersection of the straight lines between opposing sixteenth corner positions on the perimeter of the Southwest quarter of Section 16.

## Corner References:

Ash	6"	N 15°W	43.69 feet
Ash	13"	N 25°E	40.35 feet
Ash	7"	N 56°E	8.16 feet
Steel Sign Post		N 65°W	1.56 feet

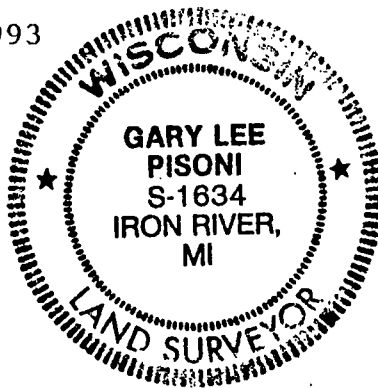
SURVEYOR'S CERTIFICATE

State of Wisconsin)ss  
County of Forest)

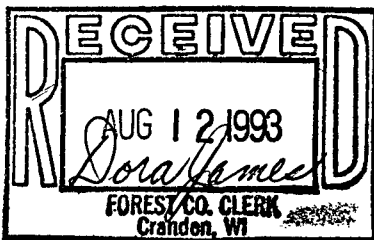
I, Gary L. Pisoni, a Cadastral Surveyor, and a Registered Land Surveyor in the State of Wisconsin, hereby certify that I have surveyed and sub-divided Section 16, Township 37 North, Range 13 East, Fourth Principal Meridian, State of Wisconsin.

The plat map and survey notes herewith are a correct representation of the land surveyed and divided. I have surveyed and sub-divided said section in accordance with the rules for the survey of public lands and with the statutes of the State of Wisconsin.

Date of Survey: 1993



*Gary L. Pisoni*  
Cadastral Surveyor  
R.L.S. State of Wisconsin  
Certificate S-1634



Survey requested by:

*Sue Vogt*  
District Ranger

*8/12/93*  
Date