

Stock No. 26273

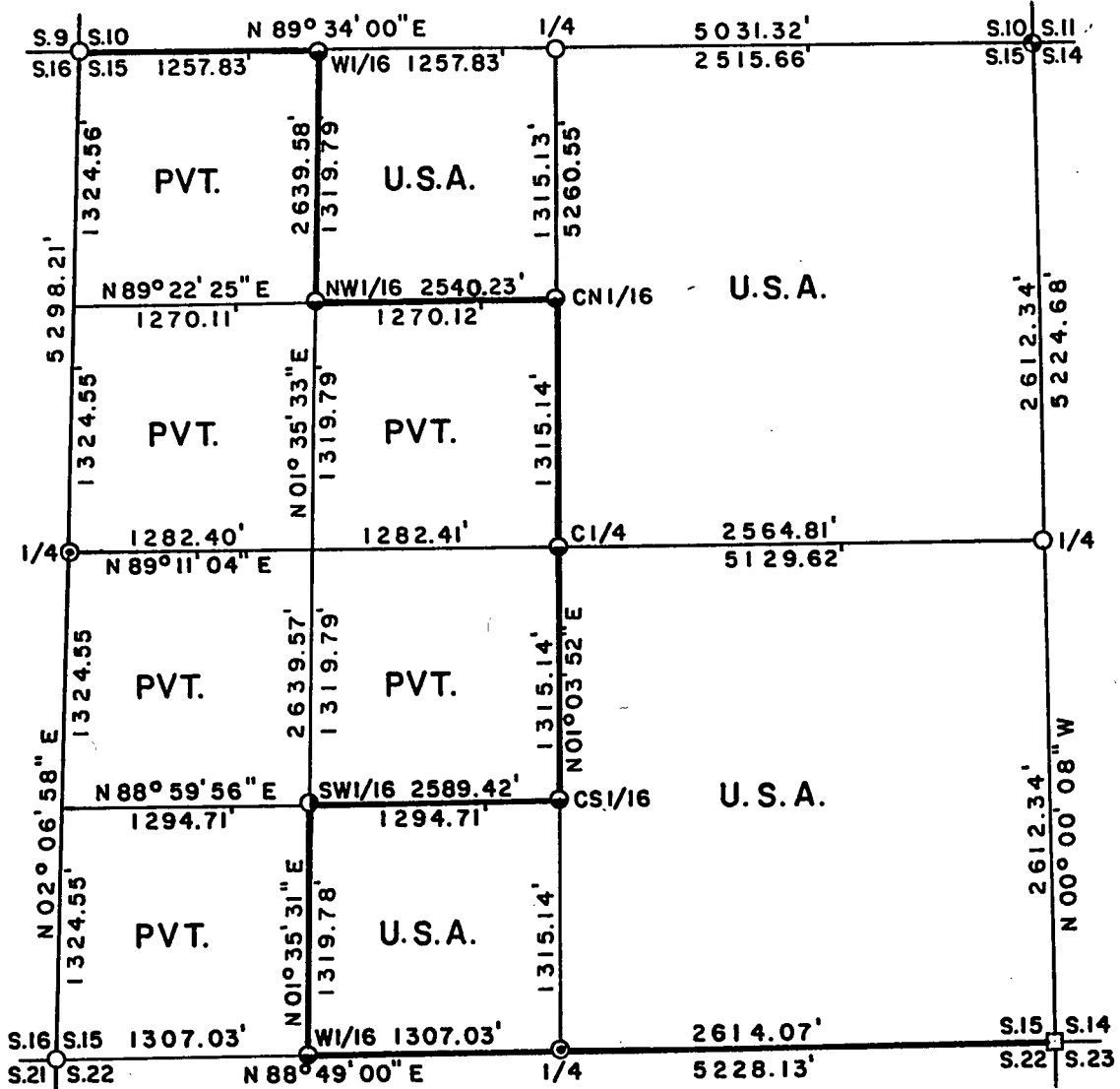
FOREST CO SURVEYOR

FILE # 311315-19930812

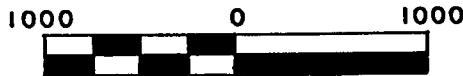
DATE _____ BY _____

PLAT OF SURVEY FOR CERTIFIED LAND CORNER RESTORATION AND ESTABLISHMENT

BEING THE CORNERS FOR THE NE 1/4, SE 1/4, SE 1/4 - SW 1/4, AND NE 1/4 - NW 1/4 OF SECTION 15, T.37N. R.13E., FOURTH PRINCIPAL MERIDIAN COUNTY OF FOREST, STATE OF WISCONSIN



SCALE 1" = 1000'



Scale in feet

LEGEND

- ⊙ 2 inch diameter aluminum pipe monument, 30" long with aluminum cap
- ⊠ 2 inch I.D. iron pipe monument with a brass cap set by U.S.F.S.
- 1 inch by 18 inch iron pipe set by Philip T. Hansen RLS

- ⊙ 2½ inch diameter aluminum pipe monument, 60" long with an aluminum cap stamped to identify the corner
- 2½ inch diameter aluminum pipe monument, 36" long with an aluminum cap
- ⊙ 1 inch diameter aluminum pipe monument, 60" long with an aluminum cap
- ⊙ 1 inch diameter aluminum pipe monument, 36" long with an aluminum cap
- Boundary line marked to Forest Service standards

Note: Bearings are true bearings as referenced to the West one-half of the South Section line of Section 3 as determined by a solar observation by Kim H. Pritzlaff RLS from a Plat of Survey of 1985 of Section 3.

Stock No. 26273

T37N R13E - Section 15

Sheet 2 of 5

SURVEY NOTES

This survey was made by Gary L. Pisoni, a Registered Land Surveyor in the State of Wisconsin, for the U.S.D.A., Forest Service, for the purpose of recovering, restoring, establishing, marking, and perpetuating the corners and boundary lines of U.S. Government Land on the perimeter and within Section 15, Township 37 North, Range 13 East, Fourth Principal Meridian, Forest County, State of Wisconsin, as shown on the plat map herewith.

The Original Government Sub-division of this township was done in 1865 by J.L. Nowlin.

The bearings between corner positions are true bearings referenced to the West One-Half of the South section line of Section 3, as determined by a solar observation by Kim H. Pritzlaff of AARON ASSOCIATES from a Plat of Survey of 1985 of Section 3. All distances shown thereon are in feet and hundredths of feet. The control traverse was measured by use of an electronic distance measuring equipment.

The accuracy of this survey exceeds the State requirements of 1 in 3000.

The field notes and a copy of the Plat of Survey are on file in the Forest Supervisor's Office at Rhinelander, Wisconsin.

CORNERS RECOVERED AND RESTORED1. Northwest Section Corner

Corner position restored in line with centerline of Highway 55 to the North, in line with an old fence line to the West and in line with 2 state highway Right-of-Way markers to the East. Local property owners are using this position as the accepted Section corner.

Corner References:

Balsam	10"	S 65°E	77.08 feet
Red Pine	15"	N 67°E	87.14 feet
Utility Pole #3713-10L1		N 39°E	97.71 feet
Centerline Highway 55		West	12.70 feet
Steel Sign Post		N 89°34'00" E	41.17 feet

2. North Quarter Corner

Corner position restored at midpoint and on line between the Northeast and Northwest Section corners of Section 15.

Corner References:

Sugar Maple	7"	N 34°W	21.81 feet
Red Maple	6"	N 17°E	13.69 feet
Sugar Maple	8"	S 84°E	8.38 feet
Sugar Maple	10"	S 44°W	3.45 feet
Steel Sign Post		N 50°W	0.90 feet



Stock No. 26273

T37N R13E - Section 15

Sheet 3 of 5

3. Northeast Section Corner

In 1985, Kim Pritzlaff RLS. restored the corner position from original bearing tree evidence.

1985 Corner References Recovered:

Sugar Maple	4"	N 84°W	20.20 feet
Hemlock	20"	S 64°W	118.34 feet
Sugar Maple	6"	S 70°E	20.43 feet
Sugar Maple	7"	N 36°E	10.73 feet
Steel Sign Post		N 03°W	1.30 feet

4. East Quarter Corner

Corner position restored at midpoint and on line between the Northeast and Southeast Section corners of Section 15.

Corner references:

Basswood	14"	N 83°E	10.86 feet
Sugar Maple	14"	S 10°E	18.96 feet
Red Maple	11"	S 76°W	23.80 feet
Red Maple	11"	N 57°W	44.06 feet
Steel Sign Post		S 31°W	0.67 feet

5. Southeast Section Corner

Found a 2" diameter galvanized iron pipe , 3 feet long with brass cap set in 1975 by Jean F. Resvick RLS. (U.S.F.S.). Corner certificate on file.

1975 Corner References Found:

Maple	11"	N 77°E	50.46 feet
Maple	10"	S 05°E	49.44 feet
Yellow Birch (Dead)		S 52°W	33.27 feet
Yellow Birch	10"	N 35°W	60.55 feet
Steel Sign Post		North	0.65 feet

New Corner References:

Sugar Maple	6"	S 82°W	30.03 feet
-------------	----	--------	------------

6. South Quarter Corner

Corner position restored at midpoint and on line between the Southwest and Southeast Section corners of Section 15.

Corner References:

Red Maple	22"	N 23°W	44.35 feet
Steel Sign Post		S 61°E	1.20 feet
Steel Sign Post		N 26°E	1.10 feet

7. Southwest Section Corner

Corner position restored by using Double proportionate measurements between the Southeast Section corner of Section 15 and the Southwest Section corner of Section 16 and between the Northwest Section corner of Section 15 and the Southwest Section corner of Section 22.

Corner references:

Ash	10"	N 44°E	24.60 feet
Ash	5"	S 86°E	19.43 feet
Tamarack	13"	S 28°E	54.97 feet
Ash	10"	S 73°W	27.67 feet
Steel Sign Post		N 46°E	0.67 feet

Stock No. 26273

T37N R13E Section 15

Sheet 4 of 5

8. West Quarter Corner

Corner position restored at midpoint and on line between the Northwest and Southwest Section corners of Section 15.

Corner References:

Steel Sign Post		North	1.05 feet
Steel Sign Post		East	1.00 feet

CORNERS ESTABLISHED1. West Sixteenth Corner between Sections 10 and 15.

Corner position established at midpoint an on line between the Northwest Section corner and North Quarter corner of Section 15.

Corner References:

Red Pine	7"	N 11°W	15.48 feet
Red Pine	14"	N 53°E	19.11 feet
Steel Sign Post		East	0.78 feet

2. Northwest Sixteenth Corner

Corner position established at the intersection of the straight lines between opposing sixteenth corner positions on the perimeter of the Northwest Quarter of Section 15.

Corner References:

Red Maple	7"	S 15°E	36.49 feet
Sugar Maple	12"	N 52°W	8.05 feet
Steel Sign Post		East	0.66 feet

3. Center North Sixteenth Corner

Corner position established at midpoint and on line between the North quarter corner and the Center quarter corner.

Corner References:

Tamarack	8"	N 55°W	60.58 feet
White Pine	15"	N 08°W	90.16 feet
Tamarack	12"	N 66°E	17.19 feet
Steel Sign Post		East	0.69 feet

4. Center Quarter Corner

Corner position established at the intersection of the straight lines between opposing quarter corner positions on the perimeter of Section 15.

Corner References:

Ash	7"	S 13°E	17.69 feet
Ash	8"	S 65°W	2.72 feet
Steel Sign Post		S 60°E	0.85 feet

Stock No. 26273

T37N R13E Section 15

Sheet 5 of 5

5. Center South Sixteenth Corner

Corner position established at midpoint and on line between the South quarter corner and the Center quarter corner.

Corner References:

Spruce	5"	S 19°W	13.68 feet
Spruce	5"	N 08°W	33.97 feet
Steel Sign Post		West	1.06 feet

6. South West Sixteenth Corner

Corner position established at the intersection of the straight lines between opposing sixteenth corner positions on the perimeter of the Southwest quarter of Section 15.

Corner References:

Red Maple	8"	N 85°E	41.95 feet
Red Maple	7"	S 67°E	57.38 feet
Steel Sign Post		South	0.91 feet

7. West Sixteenth Corner between Sections 15 and 22.

Corner position established at midpoint and on line between the Southwest Section corner and South Quarter corner of Section 15.

Corner References:

Sugar Maple	11"	S 13°W	26.75 feet
Basswood	10"	N 65°W	16.81 feet
Steel Sign Post		N 45°E	1.22 feet

SURVEYOR'S CERTIFICATE

State of Wisconsin)ss
County of Forest)

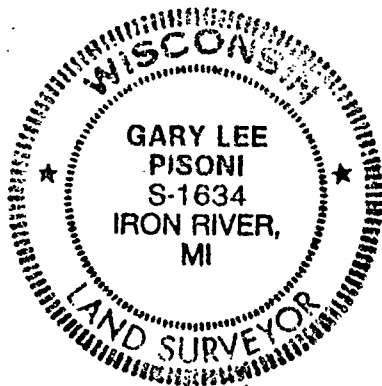
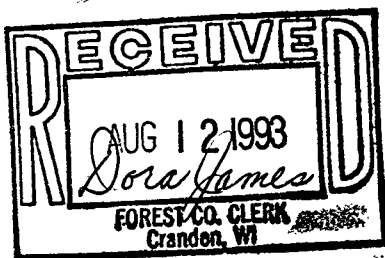
I, Gary L. Pisoni, a Cadastral Surveyor, and a Registered Land Surveyor in the State of Wisconsin, hereby certify that I have surveyed and sub-divided Section 15, Township 37 North, Range 13 East, Fourth Principal Meridian, State of Wisconsin.

The plat map and survey notes herewith are a correct representation of the land surveyed and divided. I have surveyed and sub-divided said section in accordance with the rules for the survey of public lands and with the statutes of the State of Wisconsin.

Date of Survey: 1993

Gary L. Pisoni

Cadastral Surveyor
R.L.S. State of Wisconsin
Certificate S-1634



Survey requested by:

Sue Vap
District Ranger*8/12/93*
Date