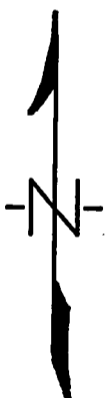
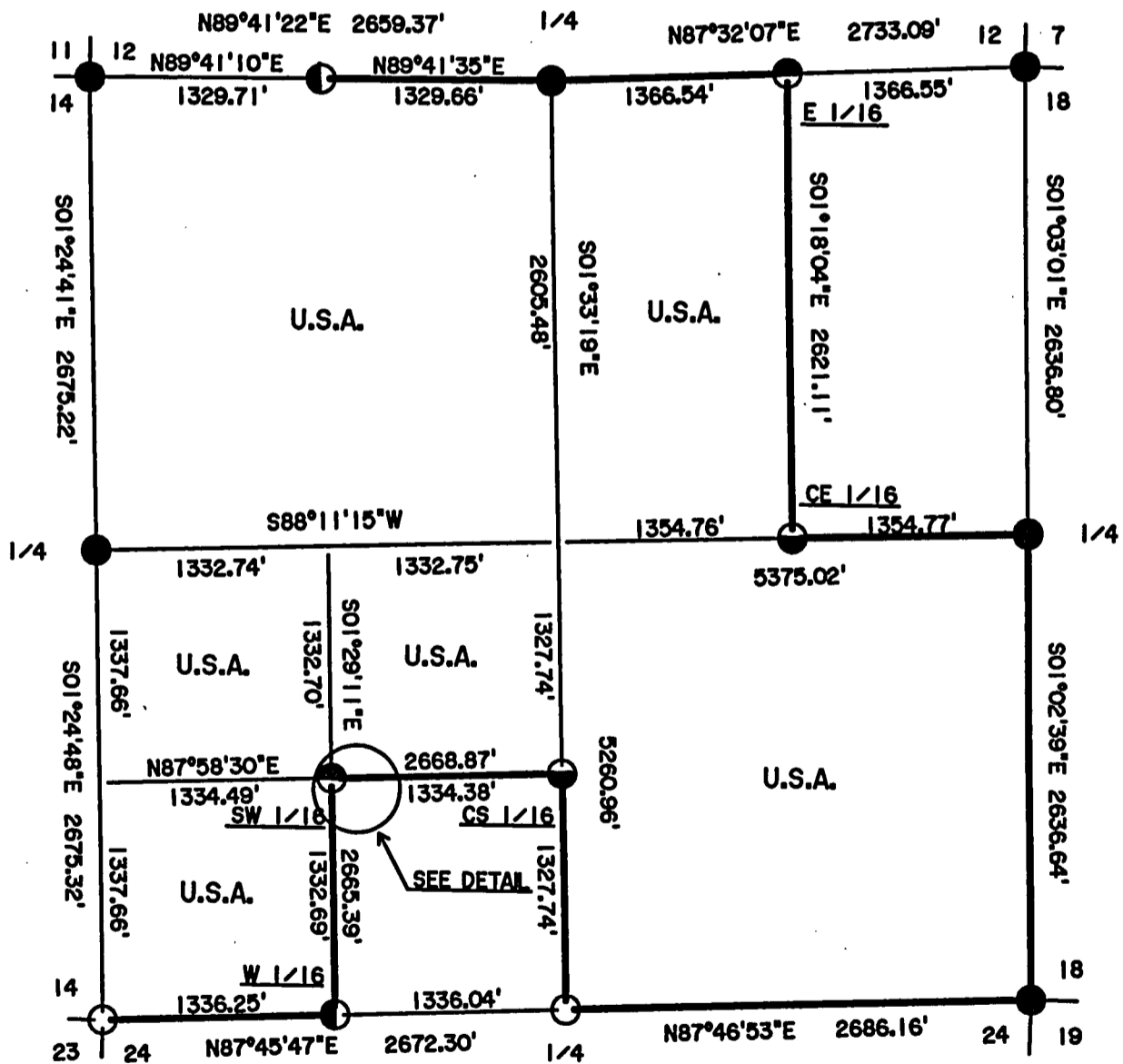
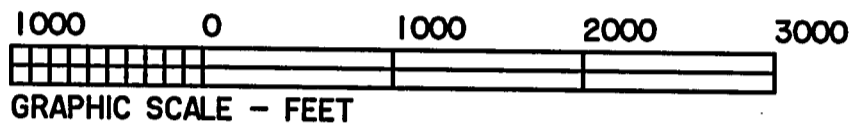


PLAT OF SURVEY

U.S. GOVERNMENT LANDS

BEING THE W. 1/2, N.E. 1/4; THE S.E. 1/4; THE N.W. 1/4;
AND THE W. 1/2 AND N.E. 1/4, S.W. 1/4; SECTION 13,
TOWNSHIP 37 NORTH, RANGE 13 EAST, 4TH PRINCIPAL MERIDIAN,
FOREST COUNTY, WISCONSIN.



LEGEND

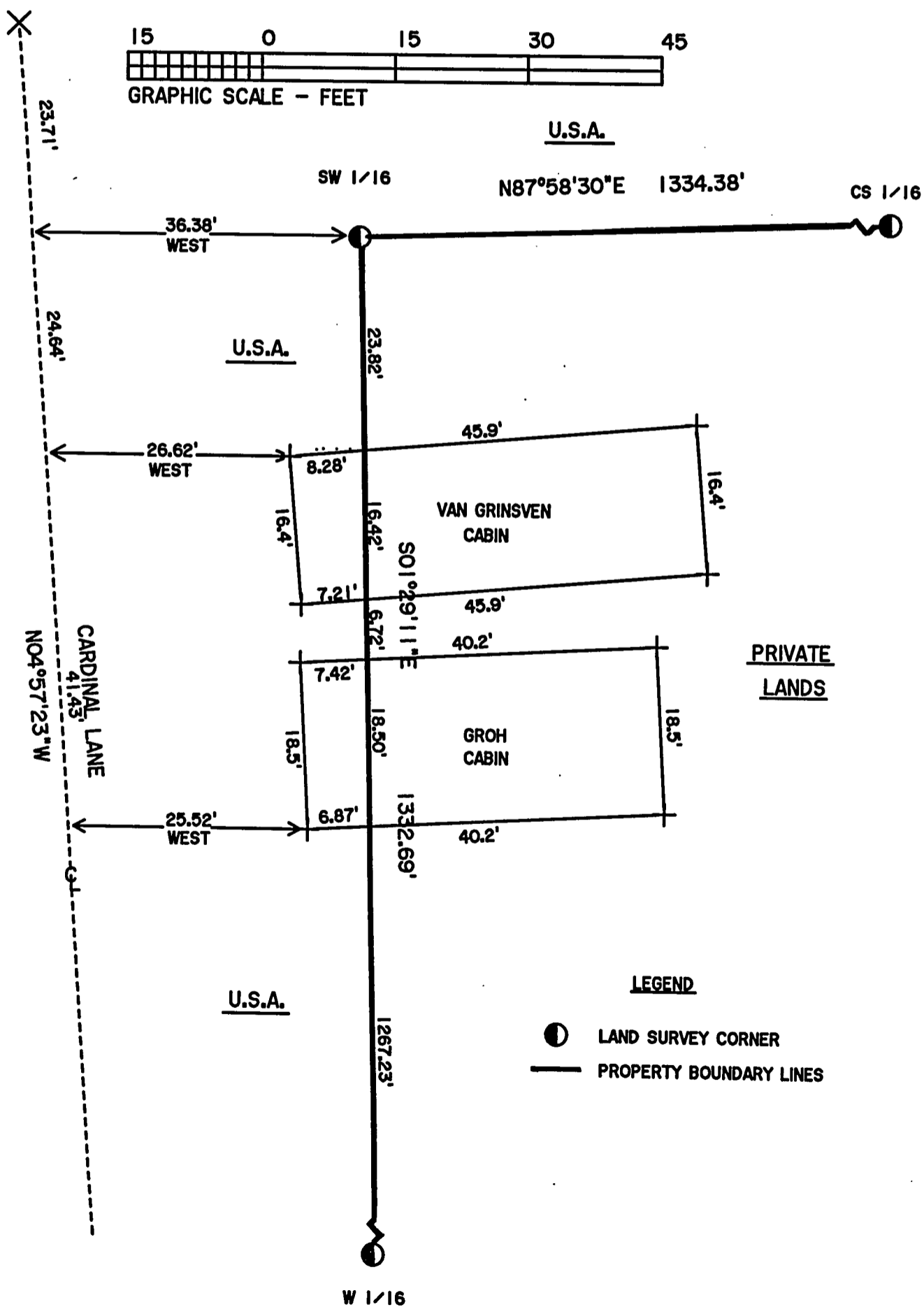
- 2" BRASS CAPPED MONUMENT, FOUND IN PLACE.
- 2 1/2" ALUMINUM MONUMENT, FOUND IN PLACE.
- ◐ 1" ALUMINUM MONUMENT, FOUND IN PLACE.
- ◑ 1" X 36" ALUMINUM MONUMENT, SET THIS SURVEY.
- ◒ 1" X 60" ALUMINUM MONUMENT, SET THIS SURVEY.
- MARKED BOUNDARY LINE OF U.S. GOVERNMENT LANDS.

DETAIL

ENCROACHMENT IN SW 1/4, SW 1/4,
SEC. 13, T.37 N., R.13 E.



U.S.A.



LEGEND

- LAND SURVEY CORNER
- PROPERTY BOUNDARY LINES

SURVEY NOTES

This survey was made by the U.S. Department of Agriculture, Forest Service, for the purpose of restoring and establishing corners of the perimeter of Section 13, for establishing subdivisional corners within Section 13 and for locating and marking the boundaries of U.S. Government land on the perimeter and within Section 13, Township 37 North, Range 13 East, 4th Principal Meridian, Forest County, Wisconsin.

The U.S. Government lands in Section 13 were acquired in 1935, 1936, 1938 and 1940.

The original government subdivision survey of this township was in 1865.

The corner positions recovered, restored and established by this survey are marked by the monument described in the map legend.

The field notes of this survey and a copy of this plat are on file in the Forest Supervisor's Office at Rhinelander, Wisconsin.

The corner positions established were located to an accuracy of one part in 5,000.

The bearings between corner positions are grid bearings as determined by Global Positioning Satellite observations.

Wisconsin North Zone State Plane Coordinates were computed from G.P.S. observations in November 1996.

Distances on plat are shown in grid measurement. Conversion between ground distance and grid distance are performed by the following formula.

Grid Distance/ Grid Scale Factor X (20,906,000/[20,906,000+ Mean Elev.]) = Ground Distance.

COORDINATE VALUES ON N.A.D. 1983 (91)

CORNER CODE	NORTH LATITUDE	WEST LONGITUDE	STATE PLANE COORDINATES		CONV. ANGLE	SCALE FACTOR
			NORTH	EAST		
NE	45°41'42.26"	88°48'08.13"	194,987.743	2,274,548.745	0°51'50"	0.999979169
SE	45°40'49.44"	88°48'00.16"	189,646.930	2,275,195.236	0°51'56"	0.999981299
SW	45°40'48.18"	88°49'15.61"	189,438.631	2,269,840.830	0°51'01"	0.999981350
NW	45°41'41.00"	88°49'16.35"	194,787.547	2,269,708.961	0°51'01"	0.999979220
E 1/4	45°41'15.47"	88°48'00.27"	192,283.131	2,275,147.185	0°51'56"	0.999980241
S 1/4	45°40'48.81"	88°48'37.98"	189,542.936	2,272,511.089	0°51'28"	0.999981234
W 1/4	45°41'14.59"	88°49'15.98"	192,113.135	2,269,774.851	0°51'01"	0.999980277
N 1/4	45°41'40.75"	88°48'38.88"	194,801.961	2,272,368.293	0°51'28"	0.999979229
W 1/16	45°40'48.49"	88°48'56.79"	189,490.791	2,271,176.065	0°51'15"	0.999981337
W 1/16	45°41'40.87"	88°48'57.61"	194,794.834	2,271,038.656	0°51'14"	0.999979224
E 1/16	45°41'41.13"	88°48'19.64"	194,860.728	2,273,733.569	0°51'42"	0.999979214
CE 1/16	45°41'15.25"	88°48'19.35"	192,240.291	2,273,793.091	0°51'42"	0.999980250
CS 1/16	45°41'01.92"	88°48'38.21"	190,870.190	2,272,475.046	0°51'28"	0.999980790
SW 1/16	45°41'01.65"	88°48'57.00"	190,823.034	2,271,141.435	0°51'15"	0.999980801

CORNERS RECOVERED OR RESTORED

1. Corner Common to Sections 12, 13, 7 and 18, R. 13-14E.

Corner found as monumented by Glen Barker, RLS with Consolidated Papers Inc. Corner certificate on file in Forest County Courthouse.

2. Corner Common to Sections 13, 24, 18 and 19, R. 13-14E.

Corner found as monumented by Phil Hansen, RLS with Consolidated Papers Inc. New Corner certificate on file in Forest County Courthouse.

Corner References Recovered:

Sugar	10"	N.45°W.	44.99 feet
Sugar	12"	S.78°W.	70.82 feet

New Corner References:

Red Maple	10"	N.10°E.	50.45 feet
Aspen	8"	S.73°E.	27.66 feet
Aspen	8"	S.11°E.	28.88 feet
Steel Sign Post		Northwest	2.50 feet

3. Corner Common to Sections 13, 14, 23 and 24

Corner found as monumented by Jean Resvick, RLS with th U.S. Forest Service, and as Restored by Gary Pisoni, RLS. Corner certificate on file in Forest County Courthouse.

4. Quarter Corner Common to Sections 11, 12, 13, and 14.

Corner found as monumented by Gary Pisoni, RLS. Corner certificate on file in Forest County Courthouse.

5. Quarter Corner Common to Sections 13 and 18, R. 13-14E.

Corner found as monumented by Glen Barker, RLS with Consolidated Papers Inc. Southeast B.T. dead & down. Northwest B.T. cut down for GPS observations. New Corner certificate on file in Forest County Courthouse.

Sugar	7"	N.09°E.	49.54 feet
Sugar	7"	S.45°W.	53.60 feet
New Corner References:			
Sugar	9"	N.71°W.	26.62 feet
Steel Sign Post		Southwest	0.80 feet

6. Quarter Corner Common to Sections 13 and 24.

Corner found as monumented by Jean Resvick, RLS with the U.S. Forest Service and as restored by Gary Pisoni RLS, Corner Certificate on file in Forest County Courthouse.

7. Quarter Corner Common to Sections 13 and 14.

Corner found as monumented by Gary Pisoni, RLS. Corner certificate on file in Forest County Courthouse.

8. Quarter Corner Common to Sections 12 and 13.

Corner found as monumented by Alan Harrison, RLS with the U.S. Forest Service. Corner Certificate on file in Forest County Courthouse.

9. *West One-Sixteenth Corner Common to Sections 13 and 24.*

Corner found as monumented by Gary Pisoni, RLS.

Corner References Recovered:

White Spruce	7"	N.46°E.	43.59 feet
Red Maple	9"	S.32°W.	73.03 feet
Steel Sign Post		S.88°W.	25.86 feet

10. *West One-Sixteenth Corner Common to Sections 12 and 13.*

Corner found as monumented by Gary Pisoni, RLS.

Corner References Recovered:

Black Spruce	4"	S.27°W.	34.01 feet
Steel Sign Post		N.65°E.	0.82 feet

New Corner References:

Aspen	6"	N.27°W.	11.22 feet
-------	----	---------	------------

CORNERS ESTABLISHED

1. *Center- East Sixteenth Corner to Section 13.*

Corner established at mid-point and on line between the Center Quarter and East Quarter Corners.

Corner References:

White Spruce	13"	S.50°E.	40.75 feet
White Spruce	12"	South	37.71 feet
Steel Sign Post	6"	East	0.80 feet

2. *Center-South Sixteenth Corner to Sections 13.*

Corner established at mid-point and on line between the Center Quarter and South Quarter Corners.

Corner References:

Steel Sign Post		South	0.55 feet
Steel Sign Post		West	0.65 feet

3. *East Sixteenth Corner Common to Sections 12 and 13.*

Corner established at mid-point and on line between the North Quarter and Northeast Section Corners.

Corner References:

Sugar	10"	N.63°E.	40.78 feet
Sugar	8"	N.16°W.	55.49 feet
Steel Sign Post		Northeast	0.50 feet

4. *Southwest Sixteenth Corner to Section 13*

Corner established at the intersection of straight lines between opposing sixteenth corner positions on the perimeter of the Southwest Quarter of Section 13.

Corner References:

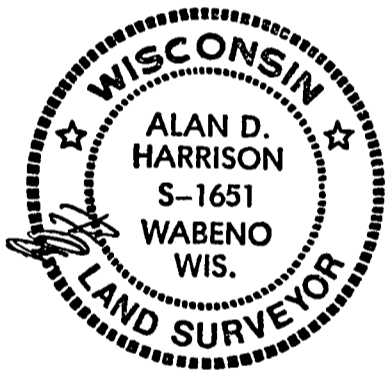
Red Maple	6"	N.04°E.	37.70 feet
Red Maple	8"	N.45°E.	41.29 feet
Steel Sign Post		West	0.50 feet


SURVEYOR'S AFFIDAVIT

State of Wisconsin]
County of Forest]

I, Alan D. Harrison, Land Surveyor, U.S.D.A. Forest Service and a Registered Land Surveyor in the State of Wisconsin, do hereby certify that I have surveyed and subdivided Section 13, Township 37 North, Range 13 East, Fourth Principal Meridian, State of Wisconsin.

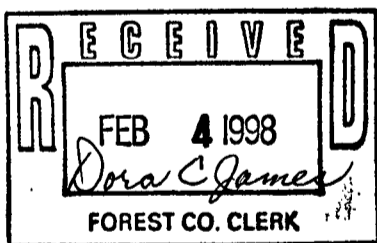
The plat map and the notes herewith are a correct representation of the land surveyed and divided. I have surveyed and subdivided said section in accordance with the rules for survey of the public lands and with the statutes of the State of Wisconsin.

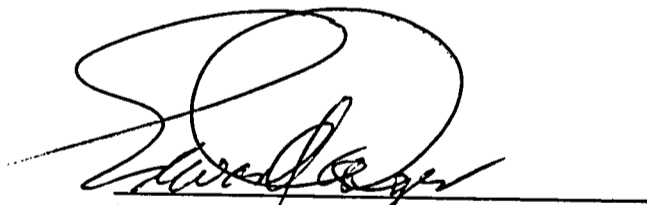



LAND SURVEYOR, U.S.D.A. Forest Service
R.L.S. Number S-1651
State of Wisconsin

Date of Survey: 1997

Plat Ready for Filing:




District Ranger