

Stock No. 26273

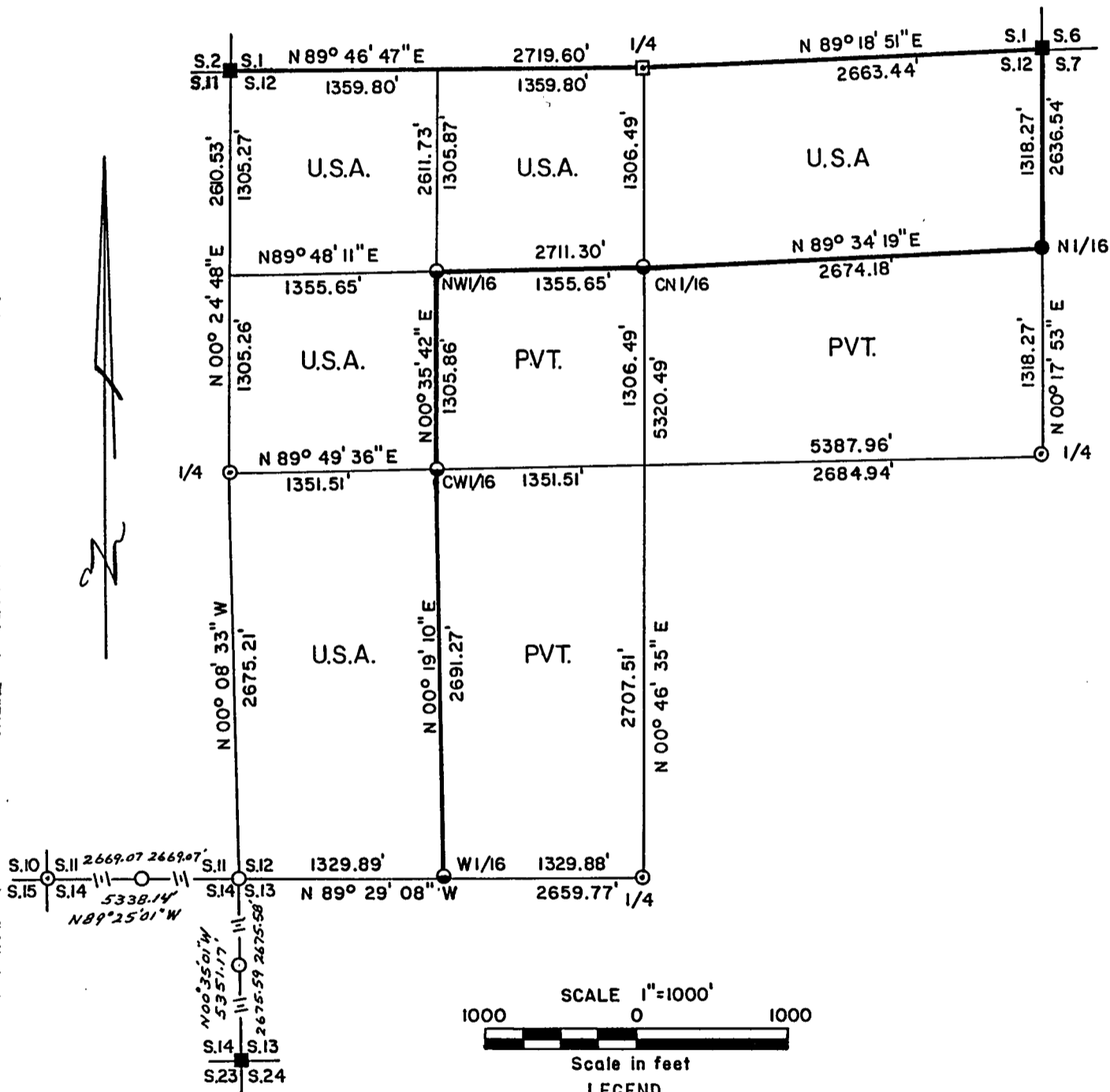
FOREST CO SURVEYOR

FILE # 371312-19911030

DATE _____ BY _____

PLAT OF SURVEY FOR CERTIFIED LAND CORNER RESTORATION AND ESTABLISHMENT

BEING THE CORNERS FOR THE N1/2-NE1/4, W1/2-SW1/4, W1/2-NW1/4 AND NE1/4-NW1/4 OF SECTION 12, T. 37N. R. 13E., FOURTH PRINCIPAL MERIDIAN COUNTY OF FOREST, STATE OF WISCONSIN



- 2 inch I.D. iron pipe monument with a brass cap set by U.S.F.S.
 - ▣ 2 1/4 inch dia. Forest County aluminum pipe monument set by Glen Barker, Consolidated Paper Inc. in 1988.
 - 1 inch dia. iron pipe with aluminum cap set by Glen Barker, Consolidated Paper Inc.
 - ⊙ 2 1/2 inch dia. aluminum pipe monument set by U.S.F.S.
 - 1 inch diameter aluminum pipe monument, 36 inches long with an aluminum cap stamped to identify the corner.
 - 2 1/2 inch diameter aluminum pipe monument, 36 inches long with an aluminum cap stamped to identify the corner.
 - Boundary line marked to Forest Service standards.
- NOTE: Bearings are referenced to a solar observation.

Stock No. 26273

Sheet 2 of 5

SURVEY NOTES

This survey was made by Gary L. Pisoni, a Registered Land Surveyor in the State of Wisconsin, for the U.S.D.A., Forest Service, for the purpose of recovering, restoring, establishing, marking, and perpetuating the corners and boundary lines of U.S. Government Land on the perimeter and within Section 12, Township 37 North, Range 13 East, Fourth Principal Meridian, Forest County, State of Wisconsin, as shown on the plat map herewith.

The Original Government Sub-division of this township was done in 1865 by J.L. Nowlin.

Bearings between corner positions are true bearings by reference to a solar observation. All distances shown thereon are in feet and hundredths of feet. The control traverse was measured by use of electronic distance measuring equipment.

The accuracy of this survey exceeds the State requirements of 1 in 3000.

The field notes and a copy of the Plat of Survey are on file in the Forest Supervisor's Office at Rhinelander, Wisconsin.

CORNERS RECOVERED AND RESTORED1. Northwest Section Corner

In 1970, Jean Resvick, U.S.F.S., restored the corner position from acceptance of bearing tree evidence.

1970 Corner references:

Maple	7"	N 65°E	22.54 feet
Maple	15"	S 33°E	23.22 feet
Cedar	12"	S 63°W	60.79 feet
Maple	7"	N 57°W	21.53 feet
Steel sign post		SW	1.0 feet

2. North Quarter Corner

In 1988, Glen Barker, Consolidated Paper, Inc. restored the corner position from the acceptance of a wood post.

1990 Corner References:

Tamarack	11"	N 56°E	52.96 feet
Tamarack	11"	S 41°E	56.71 feet
Tamarack	9"	S 40°W	45.51 feet
Black Spruce	7"	N 49°W	51.42 feet

3. Northeast Section Corner

In 1964, Jean Resvick, U.S.F.S., restored the corner position from acceptance of bearing tree evidence.

1964 Corner references:

Cedar	8"	N 35°E	16.39 feet
Black Ash	9"	S 41°E	25.81 feet
Cedar	7"	S 44°W	42.00 feet
Cedar	7"	N 51°W	19.14 feet

4. North Sixteenth Corner Between Sections 12 and 7.

In 1989, Glen Barker, Consolidated Paper, Inc., established the corner position on line and midway between the Northeast Section corner and the East quarter corner.

1990 Corner References:

Sugar Maple	8"	S 87°E	27.55 feet
Sugar Maple	7"	S 34°W	27.51 feet
Steel sign post		N 30°W	0.82 feet

Stock No. 26273

Sheet 3 of 5

5. East Quarter Corner

Corner restored by U.S.F.S.

Corner References:

Sugar	9"	N 62°E	20.02 feet
Sugar	8"	S 46°W	21.21 feet
Yellow Birch	11"	N 52°W	19.62 feet
Steel sign post		SE	1.10 feet

6. South Quarter Corner

Corner restored by U.S.F.S.

Corner References:

Black Spruce	7"	S 71°E	32.41 feet
Black Cherry	6"	S 05°W	7.69 feet
Black Spruce	6"	S 44°W	34.24 feet
Steel sign post		NE	1.10 feet

7. Southwest Corner of Section 13.

In 1975, Jean Resvick, U.S.F.S., replaced an iron pipe which was set by J. R. Ritter in 1919 from original evidence with a 2" I.D. galvanized iron pipe with a brass cap.

1975 Corner References Found:

Maple	14"	N 24°E	21.92 feet
Maple	8"	N 41°W	8.67 feet
Steel sign post		North	0.5 feet

New Corner Reference:

Maple	9"	N 67°W	24.95 feet
-------	----	--------	------------

8. Northwest Corner of Section 14

Corner position restored with a 2"x30" aluminum pipe monument from original bearing tree evidence.

Corner References:

Sugar Maple	7"	N 36°E	10.73 feet
Sugar Maple	6"	S 70°E	20.43 feet
Hemlock	20"	S 64°W	118.34 feet
Sugar Maple	4"	N 84°W	20.20 feet
Steel sign post		N 03°W	1.30 feet

9. West Quarter Corner

Corner restored by U.S.F.S.

Corner References:

Red Maple	6"	S 55°W	63.12 feet
Cedar Stub	10"	S 80°W	15.14 feet
Red Maple	7"	West	82.44 feet
Steel sign post		NE	3.1 feet

10. South Quarter Corner of Section 11

Corner position restored at midpoint and on line between the Southwest and Southeast section corners of Section 11.

Corner References:

Sugar Maple	11"	N 28°E	25.47 feet
Sugar Maple	12"	S 52°E	12.15 feet
Cedar	8"	S 66°W	45.58 feet
Sugar Maple	11"	N 44°W	46.69 feet
Steel sign post		East	0.62 feet

Stock No. 26273

Sheet 4 of 5

11. West Quarter Corner of Section 13

Corner position restored at midpoint and on line between the Southwest and Northwest Section corners of Section 13.

Corner References:

Popple	5"	N 72°E	34.11 feet
Popple	4"	S 36°E	13.23 feet
Balsam	4"	S 13°E	80.39 feet
Steel sign post		S 45°W	1.07 feet
Steel sign post		N 45°W	1.07 feet
Centerline of road		N 35°W	28.3 feet

12. Southwest corner of Section 12

Corner position restored by double proportionate method between the West quarter corner of Section 12 and the Southwest Section corner of Section 13 and between the Northwest Section corner of Section 14 and the South quarter corner of Section 12.

Corner References:

Cedar	10"	N 66°W	86.33 feet
Red Maple	10"	N 26°W	61.05 feet
Spruce	9"	N 13°E	29.73 feet
Red Maple(double)	9"	N 47°E	59.85 feet
Steel sign post		S 37°W	0.92 feet

CORNERS ESTABLISHED1. Center North Sixteenth Corner

Corner position established at midpoint and on line between the North quarter corner and the Center quarter corner.

Corner References:

Balsam	4"	S 40°E	54.64 feet
Sugar Maple	4"	S 88°W	41.17 feet
Steel sign post		North	0.57 feet

2. Northwest Sixteenth Corner

Corner position established at the intersection of the straight lines between opposing sixteenth corner positions on the perimeter of the Northwest quarter of Section 12.

Corner References:

Black Spruce	8"	S 26°E	26.70 feet
Black Spruce	7"	S 48°W	14.66 feet
Steel sign post		North	0.74 feet

3. Center West Sixteenth Corner

Corner position established at midpoint and on line between the West quarter corner and the Center quarter corner.

Corner References:

Cherry	3"	N 06°E	39.09 feet
Spruce	9"	N 47°E	59.08 feet
Steel sign post		West	0.52 feet

4. West Sixteenth Corner Between Sections 12 and 13.

Corner position established at midpoint and on line between the Southwest Section corner and the South quarter corner of Section 12.

Corner References:

Black Spruce	4"	S 27°W	34.01 feet
Popple	3"	N 70°W	11.15 feet
Steel sign post		N 65°E	0.82 feet

Stock No. 26273

SURVEYOR'S CERTIFICATE

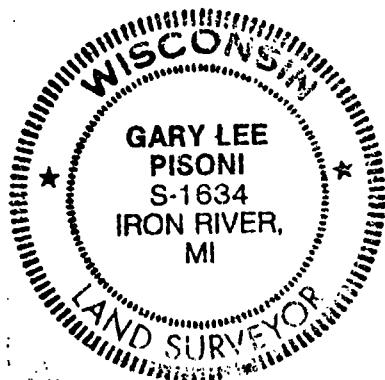
State of Wisconsin)
County of Forest)^{SS}

I, Gary L. Pisoni, a Cadastral Surveyor, and a Registered Land Surveyor in the State of Wisconsin, hereby certify that I have surveyed and sub-divided Section 12, Township 37 North, Range 13 East, Fourth Principal Meridian, State of Wisconsin.

The plat map and survey notes herewith are a correct representation of the land surveyed and divided. I have surveyed and sub-divided said section in accordance with the rules for the survey of public lands and with the statutes of the State of Wisconsin.

Date of Survey: 1990

Gary L. Pisoni
Cadastral Surveyor
R.L.S. State of Wisconsin
Certificate S-1634



Survey requested by: Darrell E. Richards 10/30/91
Acting District Ranger Date

