

Stock No. 26273

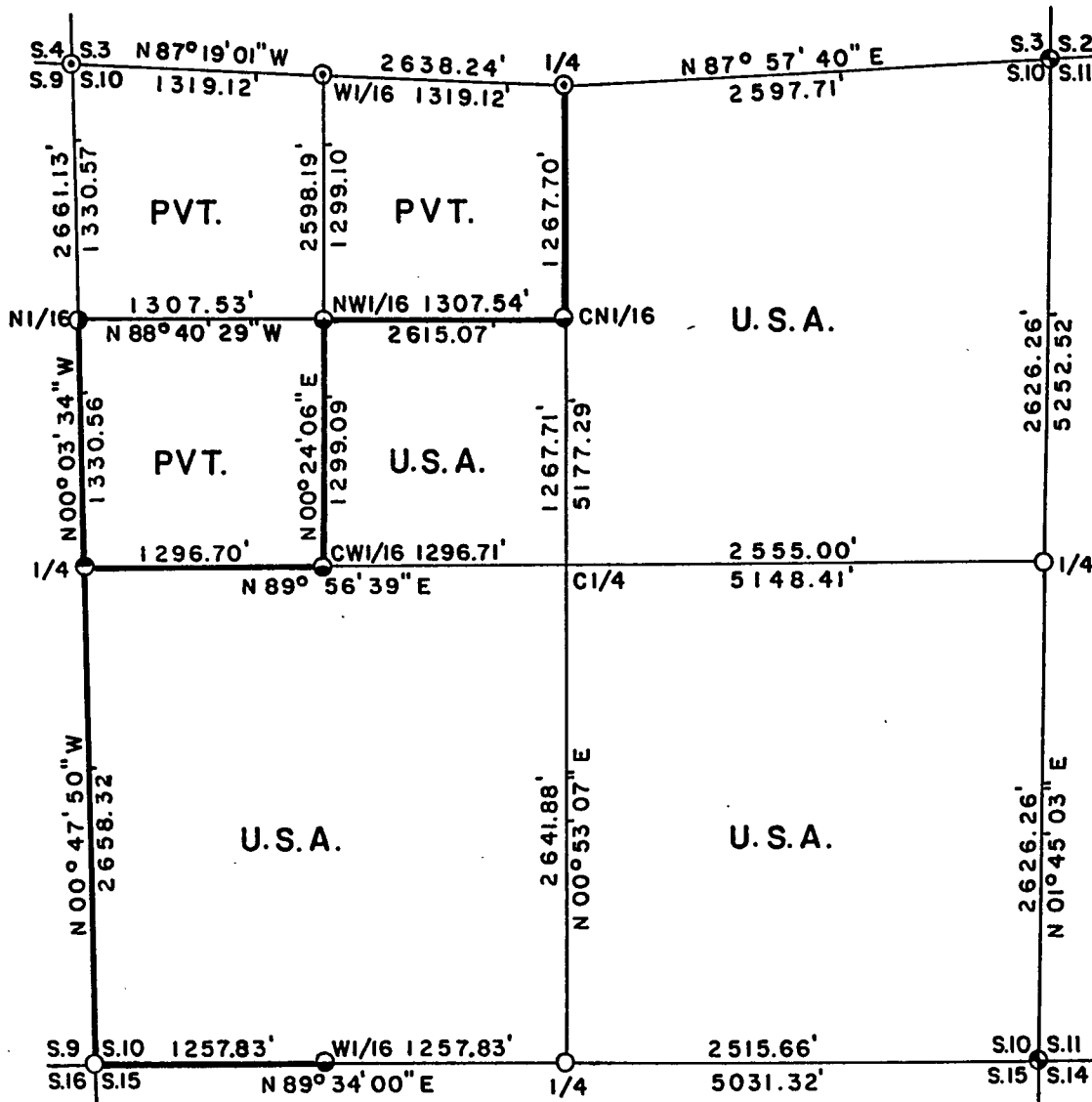
FOREST CO SURVEYOR

FILE # 371310-19930812

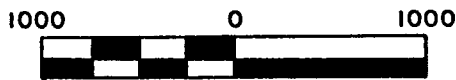
DATE \_\_\_\_\_ BY \_\_\_\_\_

Sheet 1 of 5

**PLAT OF SURVEY FOR CERTIFIED LAND CORNER RESTORATION AND ESTABLISHMENT**  
 BEING THE CORNERS FOR THE NE1/4, SE1/4, SW1/4, AND SE1/4-NW1/4 OF SECTION 10, T.37N. R.13E., FOURTH PRINCIPAL MERIDIAN  
 COUNTY OF FOREST, STATE OF WISCONSIN



SCALE 1" = 1000'



Scale in feet

LEGEND

- ⊙ Existing 2½ inch diameter aluminum pipe monument
  - 2 inch diameter aluminum pipe monument, 30" long with an aluminum cap
  - 2 inch diameter aluminum pipe monument, 60" long set by Milo Stefan U.S.F.S.
  - 2½ inch diameter aluminum pipe monument, 36" long with an aluminum cap stamped to identify the corner
  - 1 inch diameter aluminum pipe monument, 60" long with an aluminum cap
  - 1 inch diameter aluminum pipe monument, 36" long with an aluminum cap
  - Boundary line marked to Forest Service standards
- Note: Bearings are true bearings as referenced to the West one-half of the South Section line of Section 3 as determined by a solar observation by Kim H. Pritzlaff RLS from a Plat of Survey of 1985 of Section 3.

Stock No. 26273

T37N R13E - Section 10

Sheet 2 of 5

SURVEY NOTES

This survey was made by Gary L. Pisoni, a Registered Land Surveyor in the State of Wisconsin, for the U.S.D.A., Forest Service, for the purpose of recovering, restoring, establishing, marking, and perpetuating the corners and boundary lines of U.S. Government Land on the perimeter and within Section 10, Township 37 North, Range 13 East, Fourth Principal Meridian, Forest County, State of Wisconsin, as shown on the plat map herewith.

The Original Government Sub-division of this township was done in 1865 by J.L. Nowlin.

The bearings between corner positions are true bearings referenced to the West One-Half of the South section line of Section 3, as determined by a solar observation by Kim H. Pritzlaff of AARON ASSOCIATES from a Plat of Survey of 1985 of Section 3. All distances shown thereon are in feet and hundredths of feet. The control traverse was measured by use of an electronic distance measuring equipment.

The accuracy of this survey exceeds the State requirements of 1 in 3000.

The field notes and a copy of the Plat of Survey are on file in the Forest Supervisor's Office at Rhinelander, Wisconsin.

CORNERS RECOVERED AND RESTORED1. Northwest Section Corner

Found a 2 1/2" diameter Aluminum monument with cap stamped for corner set by William Cochrane, RLS in 1980. Corner certificate on file.

Corner references:

Power Pole #3713-4R1		N 45°E	7.96 feet
Power Pole #3713-3L1		N 69°E	69.25 feet
Cherry	10"	N 40°W	39.96 feet
Steel Sign Post		SW	0.50 feet

2. West Sixteenth Corner between Section 3 and 10.

Found a 2 1/2" diameter Aluminum pipe monument set by William Cochrane, RLS in 1980 and at midpoint and on line between the Northwest Section corner and the North Quarter corner of Sec. 10.

1980 Corner References by William Cochrane:

Sugar Maple	9"	N 21°W	16.18 feet
Balsam	8"	N 74°E	25.38 feet
Steel Sign Post		NE	0.50 feet

3. North Quarter Corner

Found a 2 1/2" diameter Aluminum monument 5' long set by William Cochrane, RLS, in 1980 from the remains of the original bearing tree stumps and a 4"x4" scribed post at the corner position.

1980 Corner References by William Cochrane:

Cedar	6"	N 17°E	11.06 feet
Cedar	8"	S 63°E	17.41 feet
Steel Sign Post		East	0.50 feet

Stock No. 26273

T37N R13E Section 10

Sheet 3 of 5

4. Northeast Section Corner

In 1985, Kim Pritzlaff RLS. set the corner position by lost methods of double proportionate measurement.

1985, Corner References Recovered.

Hemlock	8"	S 26°E	66.85 feet
Red Maple	5"	N 86°W	6.05 feet
Sugar Maple	5"	N 04°E	24.20 feet
Cedar	10"	N 76°E	53.63 feet
Steel Sign Post		S 14°W	0.90 feet

5. East Quarter Corner

Corner position restored at midpoint and on line between the Northeast and Southeast Section corners of Section 10.

Corner References:

Balsam	6"	S 33°E	16.43 feet
Red Maple	8"	S 04°W	16.01 feet
Red Maple	7"	N 50°W	9.79 feet
Red Maple	8"	N 01°E	18.55 feet
Steel Sign Post	East		1.12 feet

6. Southeast Section Corner

In 1985, Kim Pritzlaff RLS. restored the corner position from original bearing tree evidence.

1985 Corner References Recovered:

Sugar Maple	4"	N 84°W	20.20 feet
Hemlock	20"	S 64°W	118.34 feet
Sugar Maple	6"	S 70°E	20.43 feet
Sugar Maple	7"	N 36°E	10.73 feet
Steel Sign Post		N 03°W	1.30 feet

7. South Quarter Corner

Corner position restored at midpoint and on line between the Southwest and Southeast Section corners of Section 10.

Corner References:

Sugar Maple	7"	N 34°W	21.81 feet
Red Maple	6"	N 17°E	13.69 feet
Sugar Maple	8"	S 84°E	8.38 feet
Sugar Maple	10"	S 44°W	3.45 feet
Steel Sign Post		N 50°W	0.90 feet

8. Southwest Section Corner

Corner position restored in line with centerline of Highway 55 to the North, in line with an old fence line to the West and in line with 2 state highway Right-of-Way markers to the East. Local property owners are using this position as the accepted Section corner. Corner located 1 1/2' from East edge of blacktop.

Corner References:

Balsam	10"	S 65°E	77.08 feet
Red Pine	15"	N 67°E	87.14 feet
Utility Pole #3713-10L1		N 39°E	97.71 feet
Centerline Highway 55		West	12.70 feet
Steel Sign Post		N 89°34'00" E	41.17 feet



Stock No. 26273

T37N R13E Section 10

Sheet 4 of 5

9. West Quarter Corner

In 1984, Milo Stefan RLS. restored the corner position from original wood post evidence.

## 1984 Corner References Recovered:

Cedar (dead)	10"	S 83°E	37.45 feet
Cedar	14"	S 47°W	42.76 feet
Cedar	12"	N 70°W	35.94 feet
Steel Sign Post		South	1.60 feet

## New Corner References:

Cedar	10"	S 09°E	47.73 feet
Steel sign post		West	1.47 feet

CORNERS ESTABLISHED1. North Sixteenth Corner between Sections 9 and 10.

Corner position restored at midpoint and on line between the Northwest Section corner and West Quarter corner of Section 10.

## Corner references:

Cedar	14"	N 21°E	14.84 feet
Cedar	14"	S 37°E	26.49 feet
Cedar	16"	S 73°W	24.38 feet
Steel Sign Post		N 03°E	1.65 feet

2. West Sixteenth Corner between Sections 10 and 15.

Corner position restored at midpoint and on line between the Southwest Section corner and South Quarter corner of Section 10.

## Corner References:

Red Pine	7"	N 11°W	15.48 feet
Red Pine	14"	N 53°E	19.11 feet
Steel Sign Post		East	0.78 feet

3. Center North Sixteenth Corner

Corner position established at midpoint and on line between the North quarter corner and the Center quarter corner.

## Corner References:

White Spruce	11"	N 14°E	29.52 feet
Red Maple	10"DbL.	S 27°E	21.48 feet
Sugar Maple	9"	N 58°W	3.32 feet
Steel Sign Post		East	1.22 feet

4. Northwest Sixteenth Corner

Corner position established at the intersection of the straight lines between opposing sixteenth corner positions on the perimeter of the Northwest quarter of Section 10.

## Corner References:

Red Maple	7"	N 82°E	6.61 feet
Sugar Maple	10"	S 10°W	14.78 feet
Hemlock	12"	S 69°W	11.69 feet
Steel Sign Post		S 30°E	0.59 feet

5. Center West Sixteenth Corner

Corner position established at midpoint and on line between the West quarter corner and the Center quarter corner.

## Corner References:

Red Maple	6"	N 33°W	10.52 feet
Red Maple	5"	N 63°E	5.66 feet
Ash	8"	S 13°W	23.12 feet
Steel Sign Post		S 74°E	0.82 feet



Stock No. 26273

T37N R13E Section 10

Sheet 5 of 5

SURVEYOR'S CERTIFICATE

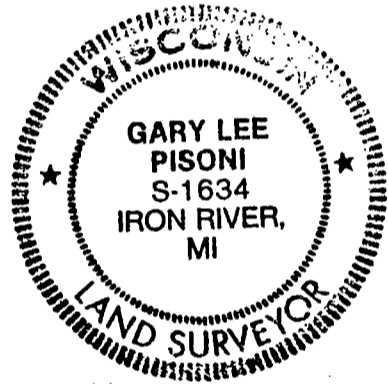
State of Wisconsin)ss  
County of Forest)

I, Gary L. Pisoni, a Cadastral Surveyor, and a Registered Land Surveyor in the State of Wisconsin, hereby certify that I have surveyed and sub-divided Section 10, Township 37 North, Range 13 East, Fourth Principal Meridian, State of Wisconsin.

The plat map and survey notes herewith are a correct representation of the land surveyed and divided. I have surveyed and sub-divided said section in accordance with the rules for the survey of public lands and with the statutes of the State of Wisconsin.

Date of Survey: 1993

Gary L. Pisoni  
Cadastral Surveyor  
R.L.S. State of Wisconsin  
Certificate S-1634



Survey requested by: Sue Vap 8/12/93  
District Ranger Date

