

Stock No. 26273

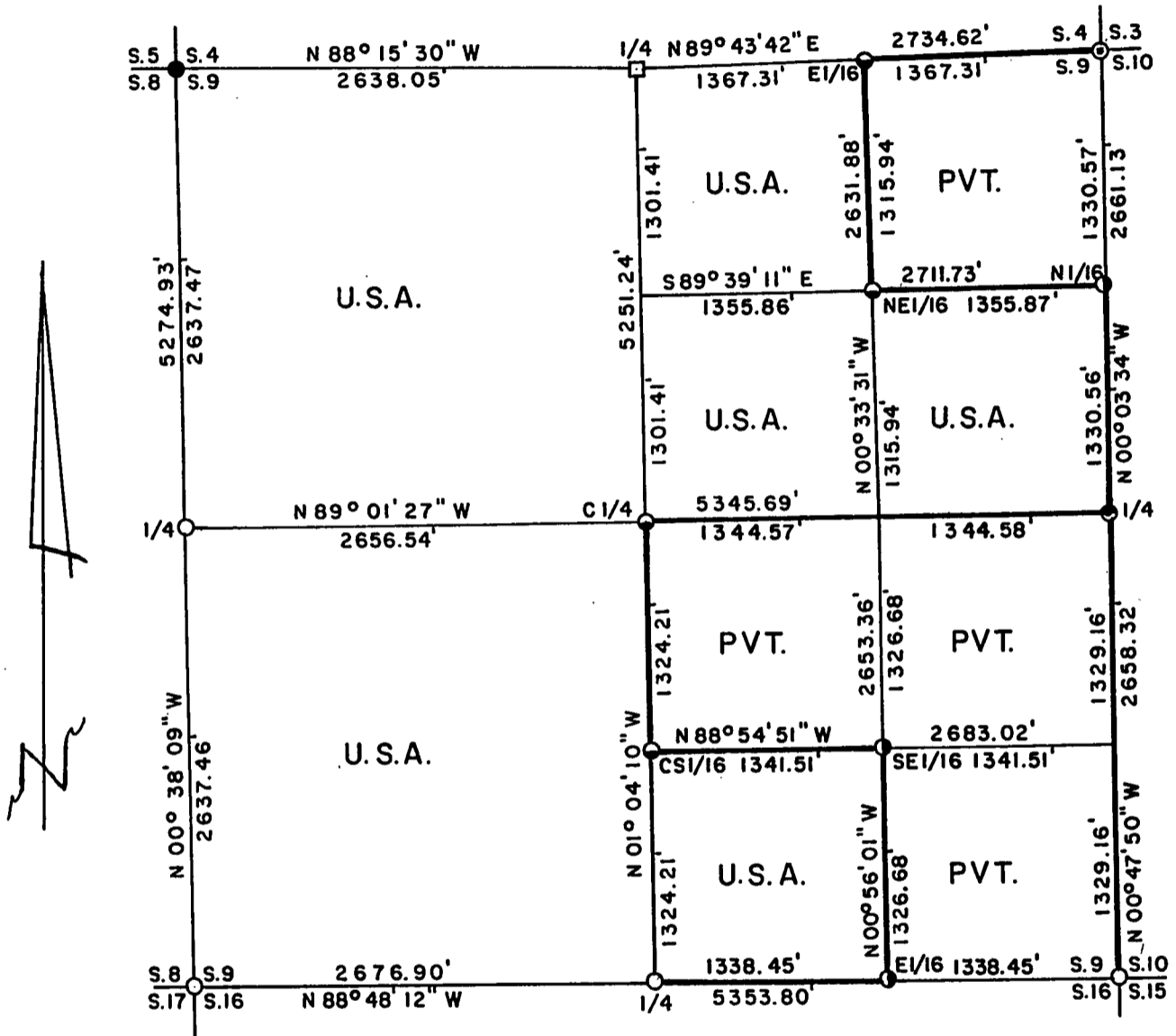
FOREST CO SURVEYOR

FILE # 371309-19930812

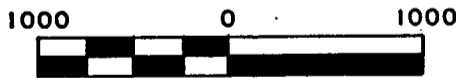
DATE _____ BY _____

PLAT OF SURVEY FOR CERTIFIED LAND CORNER RESTORATION AND ESTABLISHMENT Sheet 1 of 5

BEING THE CORNERS FOR THE NW1/4, SW1/4, SW1/4-SE1/4, W1/2-NE1/4 AND SE1/4-NE1/4 OF SECTION 9, T.37N. R.13E., FOURTH PRINCIPAL MERIDIAN COUNTY OF FOREST, STATE OF WISCONSIN



SCALE 1"=1000'



Scale in feet
LEGEND

- "X" chiseled on a large rock
- 2 inch I.D. iron pipe monument with a brass cap set by U.S.F.S.
- 2 inch dia. aluminum pipe monument, 60" long set by Milo Stefan U.S.F.S.
- ⊙ 2½ inch dia. aluminum pipe monument, 30" long set by William Cochrane U.S.F.S.
- 2½ inch dia. aluminum pipe monument, 36" long with aluminum cap stamped to identify the corner
- 1 inch dia. aluminum pipe monument, 60" long with aluminum cap
- 1 inch dia. aluminum pipe monument, 36" long with aluminum cap
- Boundary line marked to Forest Service standards

Note: Bearings are true bearings as referenced to the West one-half of the South Section line of Section 3 as determined by a solar observation by Kim H. Pritzlaff RLS from a Plat of Survey of 1985 of Section 3.

Stock No. 26273

T37N R13E - Section 9

Sheet 2 of 5

SURVEY NOTES

This survey was made by Gary L. Pisoni, a Registered Land Surveyor in the State of Wisconsin, for the U.S.D.A., Forest Service, for the purpose of recovering, restoring, establishing, marking, and perpetuating the corners and boundary lines of U.S. Government Land on the perimeter and within Section 9, Township 37 North, Range 13 East, Fourth Principal Meridian, Forest County, State of Wisconsin, as shown on the plat map herewith.

The Original Government Sub-division of this township was done in 1865 by J.L. Nowlin.

The bearings between corner positions are true bearings referenced to the West One-Half of the South section line of Section 3, as determined by a solar observation by Kim H. Pritzlaff of AARON ASSOCIATES from a Plat of Survey of 1985 of Section 3. All distances shown thereon are in feet and hundredths of feet. The control traverse was measured by use of an electronic distance measuring equipment.

The accuracy of this survey exceeds the State requirements of 1 in 3000.

The field notes and a copy of the Plat of Survey are on file in the Forest Supervisor's Office at Rhinelander, Wisconsin.

CORNERS RECOVERED AND RESTORED1. Northwest Section Corner

Found a chiseled X on the Southwest end of a large rock as determined by Jean Resvick RLS. (U.S.F.S.) 1969-1971.

Corner restored by proportionate measurement between Northeast corner of Section 5, Southwest corner of Section 5, Southeast corner of Section 20, and Quarter corner to Sections 4 and 9.

Corner reference found:

Witness Corner: 2" galvanized iron pipe with brass cap
Bearing South, 41.08 feet, 1971

New Corner references:

Red Maple	7"	N 62°E	10.09 feet
Black Cherry	9"	S 28°E	20.81 feet
Balsam	7"	N 50°W	22.06 feet
Steel Sign Post		South	41.80 feet

2. North Quarter Corner

Found a 2" galvanized iron pipe with 3" brass cap stamped for corner set by Jean Resvick RLS. (U.S.F.S.). Corner restored from remains of original Government bearing trees.

Bearing References Recovered:

Sugar Maple	7"	N 69°E	4.16 feet
Sugar Maple	7"	S 28°E	15.96 feet
Sugar Maple	9"	S 25°W	11.97 feet
Sugar Maple	11"	N 45°W	39.30 feet
Top Boulder		S 03°E	3.00 feet

New Reference:

Steel Sign Post		N 25°E	0.90 feet
-----------------	--	--------	-----------



Stock No. 26273

T37N R13E Section 9

Sheet 3 of 5

3. Northeast Section Corner

Found a 2 1/2" diameter Aluminum monument with cap stamped for corner set by William Cochrane, RLS. (U.S.F.S.) in 1980. Corner certificate on file.

Corner References:

Power Pole #3713-4R1		N 45°E	7.96 feet
Power Pole #3713-3L1		N 69°E	69.25 feet
Cherry	10"	N 40°W	39.96 feet
Steel Sign Post		SW	0.50 feet

4. East Quarter Corner

In 1984, Milo Stefan, RLS. (U.S.F.S.) restored the corner position from original squared stake and a blazed line to the South.

1984 Corner References Recovered:

Cedar (Dead)		S 83°E	37.45 feet
Cedar	14"	S 47°W	42.76 feet
Cedar	12"	N 70°W	35.94 feet
Steel Sign Post		South	1.60 feet

New Corner References:

Cedar	10"	S 09°E	47.73 feet
Steel Sign Post		West	1.47 feet

5. Southeast Section Corner

Corner position restored in line with centerline of Highway 55 to the North, in line with an old fence line to the West and in line with 2 state highway Right-of-Way markers to the East. Local property owners are using this position as the accepted Section corner.

Corner References:

Balsam	10"	S 65°E	77.08 feet
Red Pine	15"	N 67°E	87.14 feet
Utility Pole #3713-10L1		N 39°E	97.71 feet
Centerline Highway 55		West	12.70 feet
Steel Sign Post		N 89°34'00" E	41.17 feet

6. South Quarter Corner

Corner position restored by using single proportionate measurements and on line between the Southwest and Southeast Section corners of Section 9.

Corner References:

Sugar Maple	13"	N 12°W	14.78 feet
Sugar Maple	10"	N 23°E	33.82 feet
Sugar Maple	12"	N 64°E	26.77 feet
Basswood	12"	S 37°W	44.50 feet
Steel Sign Post		West	0.62 feet

7. Southwest Section Corner

Corner position restored in centerline of North-South road and by using single proportionate measurements between the Northwest Section Corner of Section 9 and the Quarter corner between Sections 20 and 21. This Section line was divided over the 2.5 miles into equal portions.

Corner References:

Ash	7"	N 49°E	29.37 feet
Ash	14"	S 86°E	21.16 feet
Red Maple	8"	S 68°W	28.44 feet
Ash	7"	N 45°W	43.76 feet
Steel Sign Post		West	15.03 feet

Stock No. 26273

T37N R13E Section 9

Sheet 4 of 5

8. West Quarter Corner

Corner position restored in the woods, but falls in line with the centerline of a woods road running North. I also used single proportionate measurements between the Northwest Section corner of Section 9 and the Quarter corner between Sections 20 and 21. The Section line was divided over the 2.5 miles into equal portions.

Corner References:

Sugar Maple	7"	S 30°E	12.15 feet
Sugar Maple	7"	S 56°W	27.68 feet
Black Cherry	11"	N 89°W	54.71 feet
Sugar Maple	13"	N 35°W	21.76 feet
Steel Sign Post		North	1.12 feet

CORNERS ESTABLISHED1. East Sixteenth Corner between Sections 4 and 9.

Corner position established at midpoint and on line between the Northeast Section corner and North Quarter corner of Section 9.

Corner References:

Popple	13"	S 86°E	29.94 feet
Spruce	13"	S 41°W	32.28 feet
Balsam	11"	N 35°W	31.52 feet
Steel Sign Post		North	0.70 feet

2. Northeast Sixteenth Corner

Corner position established at the intersection of the straight lines between opposing sixteenth corner positions on the perimeter of the Northeast quarter of Section 9.

Corner References:

Black Spruce	8"	N 03°E	10.27 feet
Black Spruce	6"	S 28°W	14.79 feet
Popple	8"	N 77°W	15.75 feet
Steel Sign Post		South	0.65 feet

3. North Sixteenth between Sections 9 and 10.

Corner position established by single proportionate measurements between the Northeast Section corner and East Quarter corner of Section 9.

Corner References:

Cedar	14"	N 21°E	14.84 feet
Cedar	14"	S 37°E	26.49 feet
Cedar	16"	S 73°W	24.38 feet
Steel Sign Post		N 03°E	1.65 feet

4. Center Quarter Corner

Corner position established at the intersection of the straight lines between opposing quarter corner positions on the perimeter of Section 9.

Corner References:

Basswood	10" (Triple)	S 37°W	49.53 feet
Sugar Maple	12"	N 71°W	49.26 feet
Sugar Maple	8"	N 28°W	26.49 feet
Steel Sign Post		S 41°E	0.60 feet



Stock No. 26273

T37N R13E Section 9

Sheet 5 of 5

5. Center South Sixteenth Corner

Corner position established at midpoint and on line between the South quarter corner and the Center quarter corner.

Corner References:

Sugar Maple	15"	N 56°W	40.13 feet
Basswood	14"	N 06°E	40.83 feet
Steel Sign Post		S 61°W	0.78 feet

6. Southeast Sixteenth Corner

Corner position established at the intersection of the straightlines between opposing sixteenth corner positions on the perimeter of the Southeast Quarter of Section 9.

Corner References:

Cedar	12"	North	14.57 feet
Steel Sign Post		S 45°W	0.90 feet
Steel Sign Post		N 45°W	0.95 feet

7. East Sixteenth Corner between Sections 9 and 16.

Corner position established at midpoint and on line between the Southeast Section corner and South Quarter corner of Section 9.

Corner References:

Hemlock	22"	S 61°W	122.46 feet
Cedar	10"	S 84°W	77.69 feet
Steel Sign Post		South	0.73 feet

SURVEYOR'S CERTIFICATE

State of Wisconsin)ss
County of Forest)

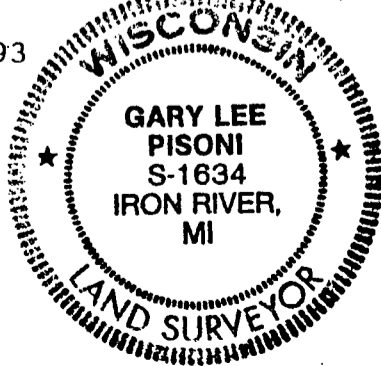
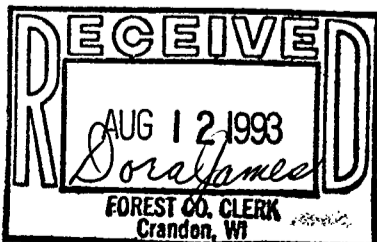
I, Gary L. Pisoni, a Cadastral Surveyor, and a Registered Land Surveyor in the State of Wisconsin, hereby certify that I have surveyed and sub-divided Section 9, Township 37 North, Range 13 East, Fourth Principal Meridian, State of Wisconsin.

The plat map and survey notes herewith are a correct representation of the land surveyed and divided. I have surveyed and sub-divided said section in accordance with the rules for the survey of public lands and with the statutes of the State of Wisconsin.

Date of Survey: 1993

Gary L. Pisoni

Cadastral Surveyor
R.L.S. State of Wisconsin
Certificate S-1634

Survey requested by: *Sue Vap*

District Ranger

Date: *8/12/93*