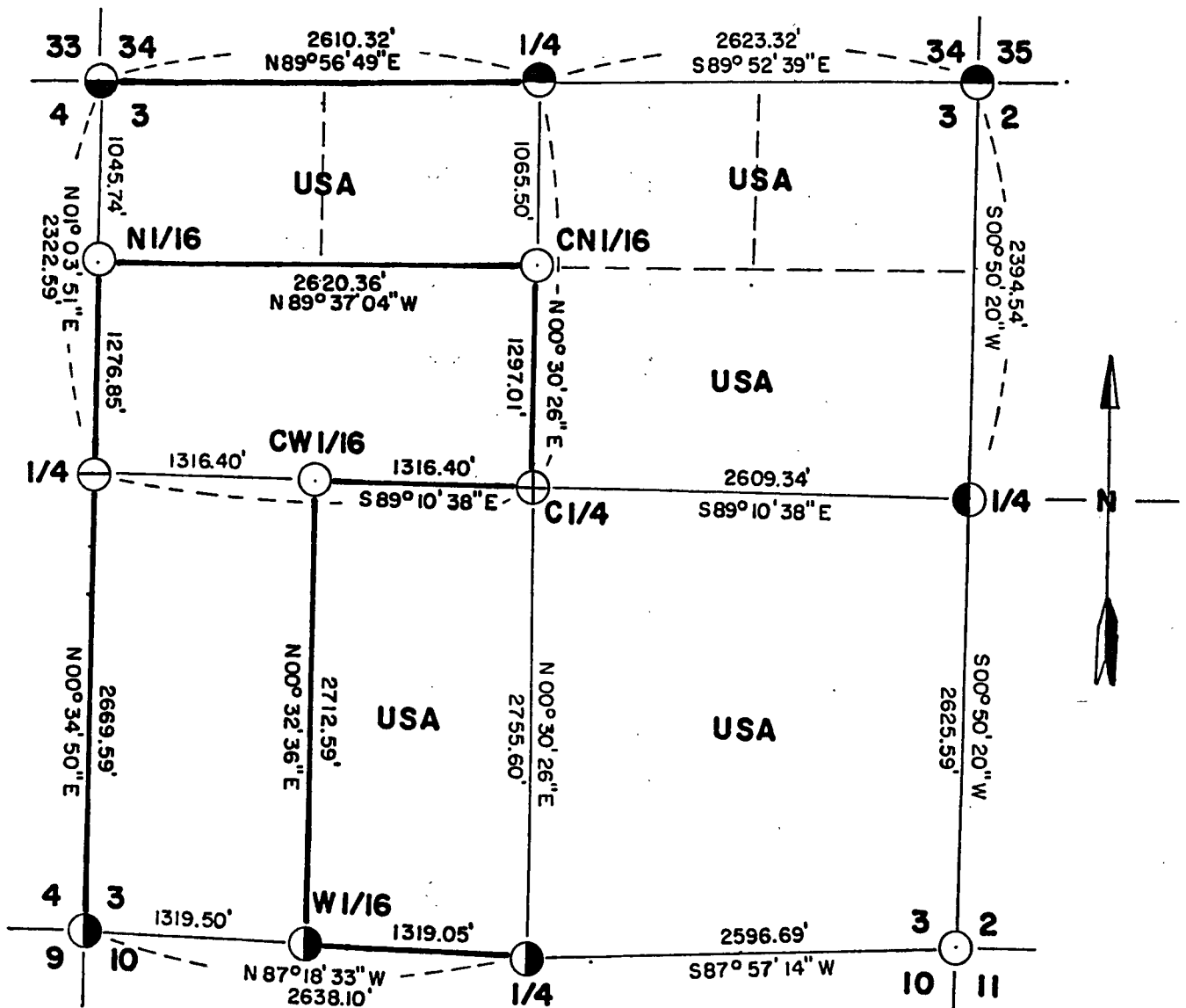
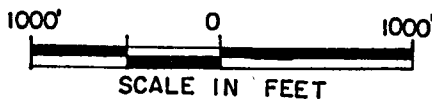


FOREST CO SURVEYOR
 FILE # 371303-19850807
 DATE _____ BY _____

Sheet one of five

PLAT OF SURVEY U.S. GOVERNMENT LAND

Being Frac. N1/2 - NW1/4, NE 1/4, SE 1/4,
 and E1/2 - SW1/4 all in Section 3
 Township 37 North, Range 13 East, Fourth Principal Meridian
 FOREST COUNTY, WISCONSIN.



LEGEND

- 2" Diameter Aluminum monument, 30" long
- ◐ 1937 General Land Office monument
- ◑ 6" Diameter concrete post with brass cap stamped for corner
- ◒ Existing 2" diameter Aluminum monument
- ◓ 2" Diameter Aluminum monument, 60" long

CONVERSION FACTOR:
 Feet to Meters = 0.304801
 Meters to Feet = 3.280833

— Marked Boundary Lines of the US Government

- ⊖ 1"x 30" iron bar in road centerline
- ⊕ Chisled cross in boulder

Stock No. 26273

Sheet two of five

SURVEY NOTES

This survey was made by AARON ASSOCIATES of Oconto Falls, Wisconsin under contract with the USDA., Forest Service, for the purpose of restoring and establishing corners on the perimeter of Section 3, for establishing subdivisional corners within Section 3, and for marking and locating the boundaries of US Government lands on their perimeter and within Section 3, Township 37 North, Range 13 East, Fourth Principal Meridian, Forest County, Wisconsin.

The original survey of this township was made in 1865.

The corner positions recovered, restored, and established are marked by monuments described in the map legend.

The corner positions established were located to an accuracy of one part in 10,000.

The bearings between corner positions are true bearings as determined by solar observation.

The field notes of this survey and a copy of the Plat map are on file in the Forest Supervisor's Office at Rhinelander, Wisconsin.

CORNERS RECOVERED AND RESTORED1. Section corner to Sections 3-4, T37N, R13E and 33-34, T38N, R13E.

Located a General Land Office corner 20" under the surface set in 1937. Plat on file.

Corner references:

Reference Monument	S 44°39'E	60.0'
USGS Benchmark	N 77°32'W	66.0'
Black Cherry 8"	S 53 W	98.50'
Witness Corner	West	42.50' (with Steel sign post)

2. Section corner to Sections 2-3, T37N, R13E and 34-35, T38N, R13E.

Located a 6" diameter concrete post with Brass cap stamped for corner set by Jean Resvick, RLS, in 1971. Plat map on file.

Corner references:

Maple	12"	N 34 E	59.9'
Cedar	14"	N 49 W	77.1'
Hemlock (new)	8"	S 10 W	61.05'
Maple	6"	S 57 W	30.17'
Steel Sign Post		S 06 E	2.40'

3. Section corner to Sections 2-3-10-11, T37N, R13E.

Extensive logging has ruined all evidence of this corner location. I therefore set this point by lost methods of Double proportionate measurement between the South quarter corner of Section 3, the Southeast corner of Section 2, the Northeast corner of Section 3, and the Southeast corner of Section 10 all of T37N, R13E.

Corner references:

Hemlock	8"	S 26 E	66.85'
Red Maple	5"	N 86 W	6.05'
Sugar Maple	5"	N 04 E	24.20'
Cedar	10"	N 76 E	53.63'
Steel Sign Post		S 14 W	0.90'

Stock No. 26273

Sheet three of five

4. Section corner to Sections 3-4-9-10, T37N, R13E.

Located a 2" diameter Aluminum monument with cap stamped for corner set by William Cochrane, RLS. Corner certificate on file.

Corner references:

Power Pole #3713-4R1	N45°E	7.96'
Power Pole #3713-3L1	N69°E	69.25'
Cherry 10"	N40°W	39.96'
Steel Sign Post	SW	.50'

5. Quarter corner to Sections 3-4, T37N, R13E.

Highway 55 construction has ruined all corner evidence, After measurements were tallied, I accepted the centerline of Highway 55 and an east-west fence line intersection as the perpetuation of this corner position. This position was verified by resident witnesses to the southeast.

Corner references:

Balsam Fir	10"	N 74 W	47.87'
Red Maple (3)	6"	S 84 W	52.10'
Cherry	5"	S 69 E	49.50'
Witness Corner		East	33.00'
Steel Sign Post		East	33.70'

6. Quarter corner to Sections 3, T37N, R13E and 34, T37N, R13E.

Located a 6" diameter concrete post with brass cap (knocked off). Corner was set by Jean Resvick in 1971 and reset by Milo Stefan, RLS, in 1984 using a 2" Aluminum monument 30" long with cap stamped for corner.

Corner refernces:

See certificate filed with Forest County records.

7. Quarter corner to Sections 2-3, T37N, R13E.

Could not find any original bearing tree or corner evidence. I therefore set this corner by lost methods, single proportionate measurement.

Corner references:

Cedar	14"	N 03 W	10.70'
Cedar	10"	N 50 E	43.03'
Cedar	16"	S 68 E	46.52'
Steel Sign Post		S 32 W	1.47'

8. Quarter corner to Sections 3-10, T37N, R13E.

Located a 2" diameter Aluminum monument with cap stamped for corner set by William Cochrane, RLS, in 1981. Certificate on file.

Corner references:

See Forest County Records.

Stock No. 26273

Sheet four of five

CORNERS ESTABLISHED9. Center quarter corner of Section 3, T37N, R13E.

Set this corner position at the intersection point of the north-south and east-west quarter lines of said Section 3.
Corner references: Corner is cross in boulder

Hemlock	12"	N 22 W	31.82'
Yellow Birch	5"	S 15 W	13.11'
Hemlock	11"	N 71 E	52.41'
Steel Sign Post		West	31.15'
Witness Corner		West	22.25'

10. North sixteenth corner between sections 3-4, T37N, R13E.

Set this corner at the single proportionate distance between the West quarter and northwest corners of said Section 3.
Corner references: Corner is 1"x 30" iron bar in road centerline

Hemlock	18"	N 32 E	69.34'
Sugar Maple	18"	N 78 E	103.41'
Hemlock	16"	S 77 E	56.51'
Steel Sign Post		East	28.90'
Witness Corner		East	28.00'

11. Center north sixteenth corner of Section 3, T37N, R13E.

Set this corner at the proportionate distance between the center quarter and north quarter corners of said Section 3.
Corner references:

Hemlock	14"	N 58 W	9.08'
Hemlock	16"	S 21 E	14.88'
Sugar Maple	10"	N 31 E	33.24'
Steel Sign Post		West	1.20'

12. Center west sixteenth corner of Section 3, T37N, R13E.

I set this corner at midpoint between the center quarter and west quarter corners of said Section 3.
Corner references:

Sugar Maple	5"	S 16 W	25.76'
Sugar Maple	7"	N 66 E	13.68'
Fed Maple	13"	N 88 W	20.25'
Steel Sign Post		South	2.00'

13. West sixteenth corner between Sections 3-10, T37N, R13E.

Located a 2" diameter Aluminum monument with cap stamped for corner set by William Cochrane, RLS, in 1981. Certificate on file.

Corner references:

See Forest County records.

Stock No. 26273

Sheet five of five

SURVEYOR'S AFFIDAVITSTATE OF WISCONSIN)
OCONTO COUNTY)SS

I, Kim H Pritzlaff, Registered Land Surveyor in the State of Wisconsin hereby certify: that I have surveyed and subdivided Section 3, Township 37 North, Range 13 East, Fourth Principal Meridian, Forest County, Wisconsin.

The Plat map and notes herewith are a true and correct representation of the land surveyed and the corners restored, recovered and established. I have surveyed and subdivided said Section in accordance with the rules of survey of the public lands and with the Statutes of the State of Wisconsin.

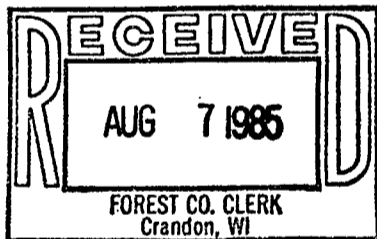


Kim H. Pritzlaff
 Kim H Pritzlaff, RES No. 1259
 AARON ASSOCIATES
 Oconto Falls, Wisconsin

Date of survey: 1985

Plat ready for filing

Dale D. Stage
 District Ranger



Dora C. James
 Forest Co. Clerk