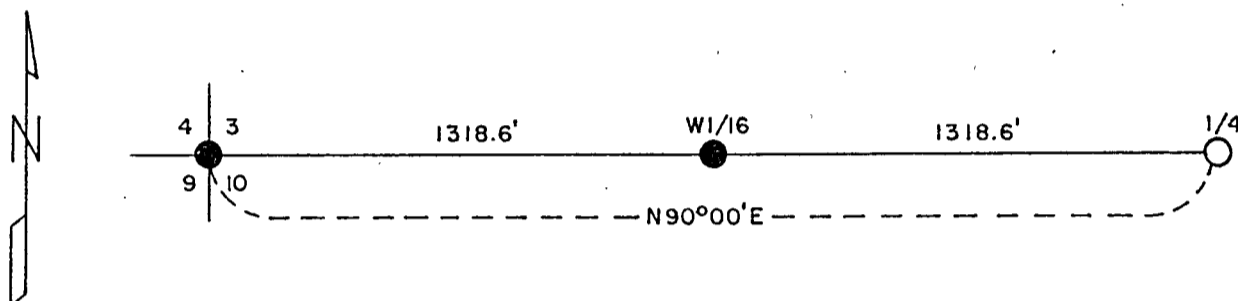


FOREST CO SURVEYOR
 FILE # 371303-19831102
 DATE _____ BY _____

Sheet 1 of 3

CERTIFIED LAND CORNER RESTORATION AND ESTABLISHMENT
 BEING THE SOUTHWEST CORNER AND THE SOUTH QUARTER
 CORNER OF SECTION 3 AND THE WEST SIXTEENTH CORNER
 BETWEEN SECTIONS 3 AND 10
 TOWNSHIP 37 NORTH, RANGE 13 EAST, FOURTH PRINCIPAL MERIDIAN
 FOREST COUNTY, WISCONSIN

SCALE

LEGEND

- Corner position marked by a 2 1/2 inch diameter aluminum pipe, 30 inches long with an aluminum cap stamped to identify the corner.
- Corner position marked by a 2 1/2 inch diameter aluminum pipe, 5 feet long with an aluminum cap stamped to identify the corner.

SURVEY NOTES

This survey was made by the U.S. Department of Agriculture, Forest Service for the purpose of restoring, establishing, marking and perpetuating those corners on the west half of the section line common to Sections 3 and 10, Township 37 North, Range 13 East, Fourth Principal Meridian, Forest County, Wisconsin as shown on the plat map herewith.

The original Government survey of this township was made in 1859.

The corner positions are monumented by the monument described in the map legend.

The corner positions restored and established by this survey were located to an accuracy of one part in 3000. The bearings between corner positions are magnetic.

The field notes of this survey and a copy of this plat of survey are on file in the Forest Supervisor's Office at Rhinelander, Wisconsin.

CORNERS RECOVERED AND RESTORED1. Section Corner common to Sections 3-4-9-10.

Position found marked by a 1 1/4 inch diameter iron pipe. No original corner evidence was found. From testimony of the adjoining land owners and measurements made to the Quarter Corner to the East I accepted this as the best available evidence of the corner position.

Corner references:

Power Pole #3713-4R1	N45°E	7.96 feet
Power Pole #3713-3L1	N69°E	69.25 feet
Cherry 10"	N40°W	39.96 feet
Steel Sign Post	SW	0.50 foot

2. Quarter Corner between Sections 3 and 10.

Position found marked by a 4" x 4" scribed wood post from which the stumps of the two original bearing trees were recovered at the record bearing and distance.

Corner references:

Cedar 6"	N17°E	11.06 feet
Cedar 8"	S63°E	17.41 feet
Steel Sign Post	East	0.50 foot

CORNER ESTABLISHED1. West Sixteenth between Sections 3 and 10.

Position established at the midpoint and on line between the southwest corner and the south quarter corner of Section 3.

Corner references:

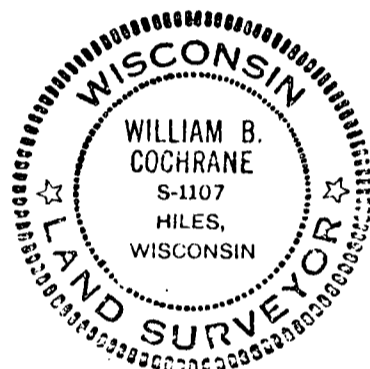
Sugar Maple 9"	N21°W	16.18 feet
Balsam 8"	N74°E	25.38 feet
Steel Sign Post	NE	0.50 foot

SURVEYOR'S AFFIDAVIT

State of Wisconsin)
 County of Forest) ss

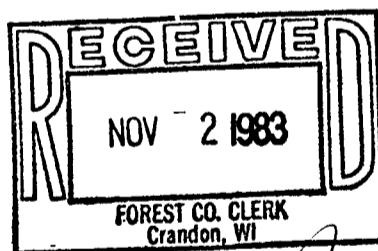
I, William B. Cochrane, Land Surveyor, U.S. Forest Service, and a Registered Land Surveyor in the State of Wisconsin, hereby certify that I have retraced and surveyed the west half of the section line between Sections 3 and 10, Township 37 North, Range 13 East, Fourth Principal Meridian, State of Wisconsin as shown on the plat map herewith.

The plan map and notes are a correct representation of the corners recovered, restored, and established. I have restored and established these corners in accordance with the rules for the survey of the public lands and with the statutes of the State of Wisconsin.



William B. Cochrane
 Land Surveyor, U.S. Forest Service
 R.L.S. State of Wisconsin
 Certificate S-1107

Date of Survey: 1980



Dora C. James